

F.A.P. RTE.	SECTION	COUNTY	TOTAL SHEETS	SHEET NO.
358	2009-135 RS	COOK	21	1
		ILLINOIS	CONTRACT NO. 60K01	

STATE OF ILLINOIS
DEPARTMENT OF TRANSPORTATION
DIVISION OF HIGHWAYS

**PROPOSED
HIGHWAY PLANS**

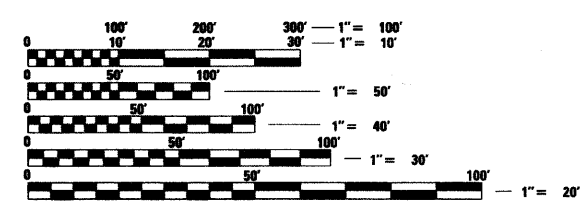
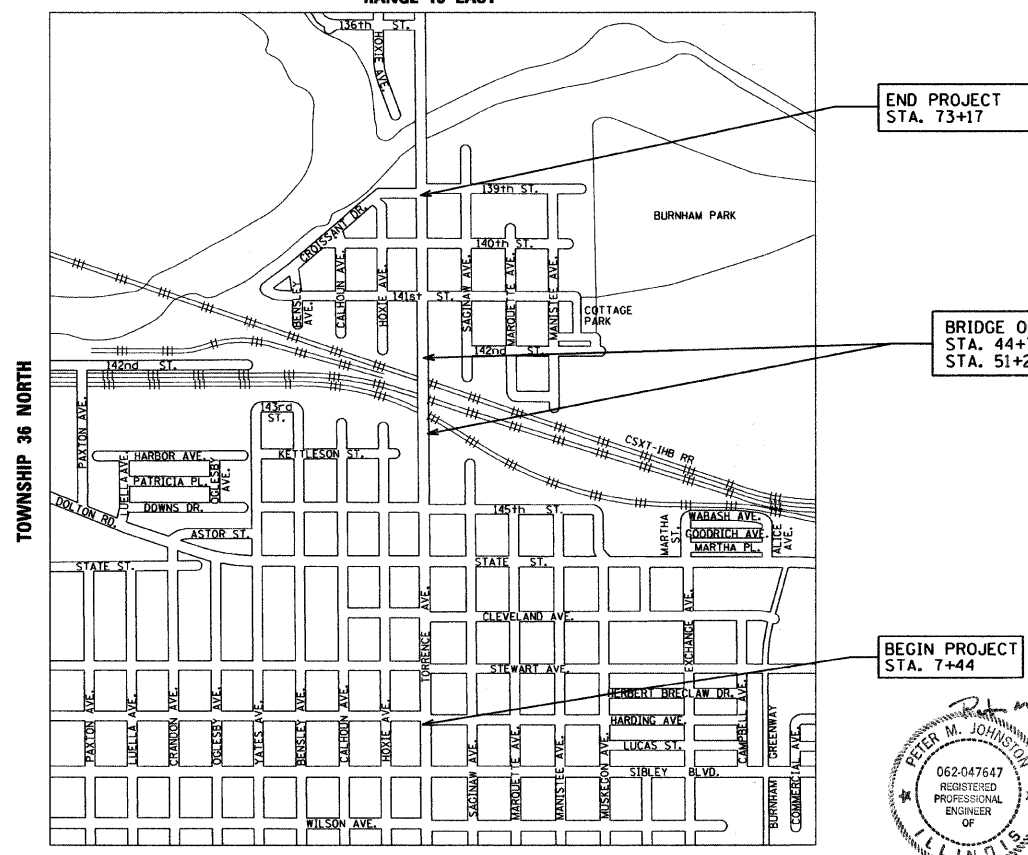
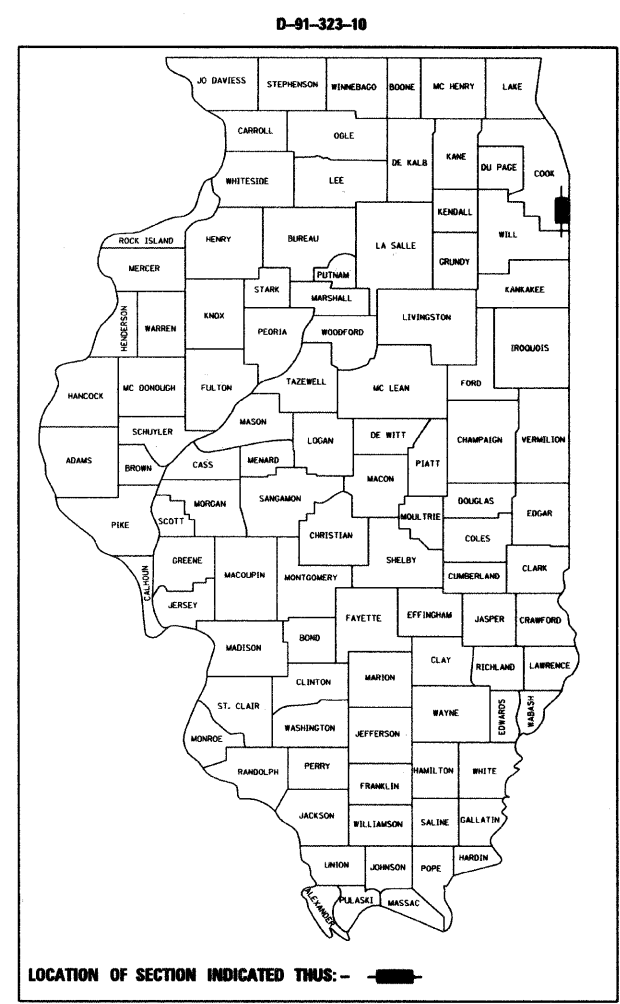
FAP 358 (TORRENCE AVENUE)
SECTION 2009-135 RS
138th STREET TO IL 83 (SIBLEY BLVD).
RESURFACING

COOK COUNTY
C-91-323-10
RANGE 15 EAST

FOR INDEX OF SHEETS, SEE SHEET NO. 2

TRAFFIC DATA
EXISTING ADT = 12,800 (2007)
SPEED LIMIT = 35 MPH

THE IMPROVEMENT IS LOCATED WITHIN
THE CALUMET CITY AND THE VILLAGE
OF BURNHAM



FULL SIZE PLANS HAVE BEEN PREPARED USING STANDARD
ENGINEERING SCALES. REDUCED SIZED PLANS WILL NOT
CONFORM TO STANDARD SCALES. IN MAKING MEASUREMENTS
ON REDUCED PLANS, THE ABOVE SCALES MAY BE USED.

J.U.L.I.E.
JOINT UTILITY LOCATION INFORMATION FOR EXCAVATION
1-800-892-0123
OR 811

PROJECT ENGINEER: PETER JOHNSTON (GRAEF) 773-399-0112
PROJECT MANAGER: KEN ENG (IDOT) 847-705-4247
CONTRACT NO. 60K01

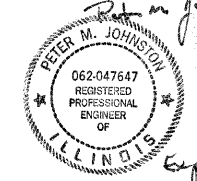
GROSS LENGTH = 6,573 FT. = 1.24 MILES
NET LENGTH = 5,923 FT. = 1.12 MILES

GRAEF 8501 W. Higgins Road; Suite 280
Chicago, Illinois 60631
(773) 399-0112

END PROJECT
STA. 73+17

BRIDGE OMISSION
STA. 44+74 TO
STA. 51+24

BEGIN PROJECT
STA. 7+44



Peter M. Johnston
1-28-10
Exp 11-30-11

STATE OF ILLINOIS
DEPARTMENT OF TRANSPORTATION
DIVISION OF HIGHWAYS

SUBMITTED FEBRUARY 3, 2010

Diana M. O'Keefe
DEPUTY DIRECTOR OF HIGHWAYS, REGION ENGINEER

March 19, 2010

Scott E. Stitt, P.E.
ENGINEER OF DESIGN AND ENVIRONMENT

March 19, 2010

Christine M. Reed
DIRECTOR OF HIGHWAYS, CHIEF ENGINEER

PRINTED BY THE AUTHORITY
OF THE STATE OF ILLINOIS