

F.A.P. RTE.	SECTION	COUNTY	TOTAL SHEETS	SHEET NO.
22	48RS-2	PEORIA	26	1

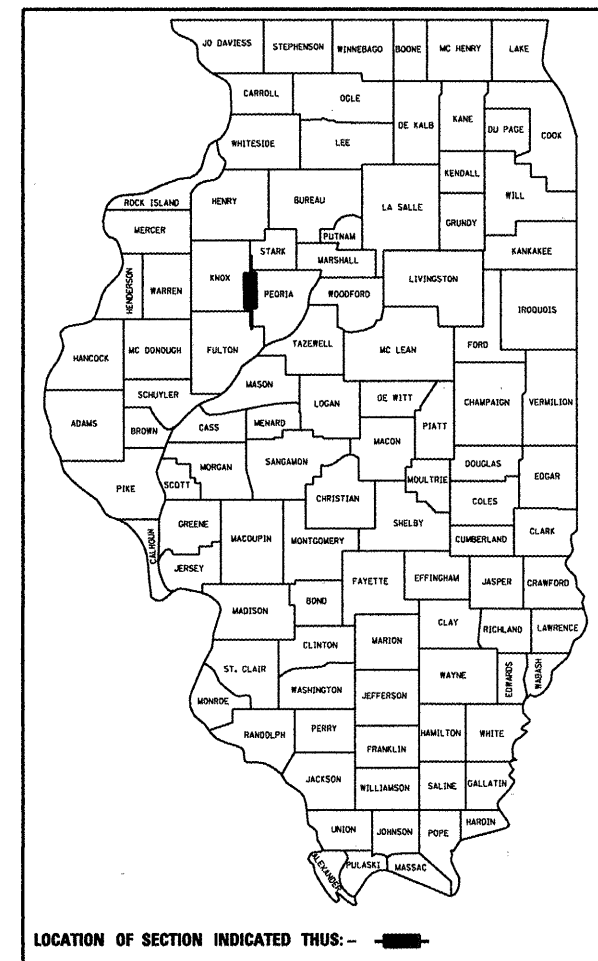
STATE OF ILLINOIS  
DEPARTMENT OF TRANSPORTATION

DIVISION OF HIGHWAYS

**PROPOSED  
HIGHWAY PLANS**

FAP 22 ROUTE IL 78  
SECTION 48RS-2  
PEORIA/KNOX COUNTIES  
C-94-167-06

D-94-101-06



PROJECT ENGR.: CHRISTOPHER MAUSHARD (309-671-3454)

PROJECT MANGER: MIKE MOHAMED (309-671-3462)

INDEX OF SHEETS

- 1 COVER SHEET
- 2-3 GENERAL NOTES /COMMITMENTS
- 4 SUMMARY OF QUANTITIES
- 5 TYPICAL SECTIONS
- 6-10 SCHEDULE OF QUANTITIES
- 11 LINE DIAGRAM
- 12 SIDEROADS DETAILS
- 13 RAILROAD STRUCTURE MILLING DETAIL
- 14 GORE AREA DETAIL
- 15-18 GUARDRAIL INSTALLATION DETAIL
- 19-26 DISTRICT CADD STANDARDS

HIGHWAY STANDARDS

- 406201-01 701201-03
- 442201-03 701301-03
- 630001-08 701306-02
- 630101-08 701311-03
- 635006-03 701336-05
- 635011-02 701901-01
- 701006-03 780001-02
- 701011-02 781001-03
- 701101-02

DIST CADD STANDARDS

- 406101-D4 780001-D4
- 440001-D4 630101-D4

PROJECT DESCRIPTION: RESURFACING,  
PATCHING & GUARDRAIL END SECTION  
ON IL 78 FROM IL 116 (FARMINGTON) TO IL 8

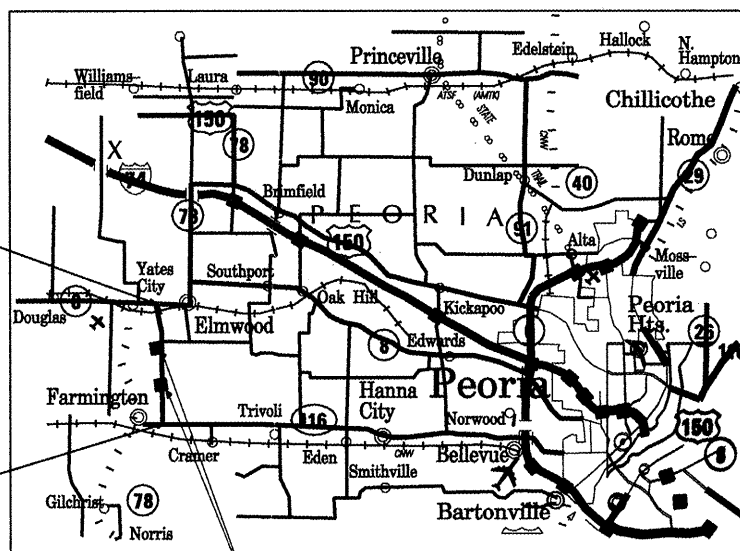
DESIGN DESIGNATION  
RURAL MINOR COLLECTOR  
ADT = 1750 VEHICLES  
SU = 60%  
MU = 100%

J.U.L.I.E.  
JOINT UTILITY LOCATION INFORMATION FOR EXCAVATION  
1-800-892-0123

CONTRACT NO. 68633 CATALOG NO. 033370-00D

IMPROVEMENT ENDS  
STA.297+50 EAST LEG  
STA. 297+90 WEST LEG

IMPROVEMENT BEGINS  
STA.1+10



**BRIDGE OMISSION**  
072-0160 PEORIA STA.108+45 TO 109+71  
048-0018 KNOX STA. 235+50 TO 236+76

GROSS LENGTH = 30,530 FEET 5.78 MILES  
NET LENGTH = 30,278 FEET 5.73 MILES

STATE OF ILLINOIS  
DEPARTMENT OF TRANSPORTATION  
DIVISION OF HIGHWAYS

SUBMITTED FEB 2 20 10  
*[Signature]*  
DEPUTY DIRECTOR OF HIGHWAYS, REGION ENGINEER

March 19, 20 10  
*[Signature]*  
ENGINEER OF DESIGN AND ENVIRONMENT

acting  
March 19, 20 10  
*[Signature]*  
DIRECTOR OF HIGHWAYS, CHIEF ENGINEER

**PRINTED BY THE AUTHORITY  
OF THE STATE OF ILLINOIS**

F.A.P. RTE.	SECTION	COUNTY	TOTAL SHEETS	SHEET NO.
22	48RS-2	PEORIA KNOX	26	2

**COMMITMENTS**

COMMITMENTS ARE NOT TO BE ALTERED WITHOUT THE WRITTEN CONSENT OF ALL PARTIES TO WHICH THE COMMITMENT WAS MADE.

NO COMMITMENTS HAVE BEEN MADE FOR THIS PROJECT.

**GENERAL NOTES**

**AGGREGATE SHOULDERS, TYPE B**

AGGREGATE SHOULDERS, TYPE B SHALL BE REQUIRED FOR ALL GRANULAR CONSTRUCTION OF SIDE ROADS, ENTRANCES, AND MAILBOX TURNOUTS, WHETHER OR NOT PORTIONS OF THE SURFACES THUS CONSTRUCTED ARE TO BE COVERED WITH A BITUMINOUS SURFACE, EXCEPT WHERE NOTED DIFFERENTLY ON THE PLANS.

**BUTT JOINT CUTTING TIME RESTRICTION**

BUTT JOINTS SHALL NOT BE MILLED MORE THAN THREE (3) DAYS PRIOR TO PLACEMENT OF THE BITUMINOUS SURFACE COURSE.

**PAVING SURFACE COURSE**

CONTINUOUS PAVING OPERATIONS ON THE MAIN ROADWAY SHALL BE MAINTAINED AT ALL TIMES DURING THE CONSTRUCTION OF THE HOT-MIX ASPHALT SURFACE. NO INTERRUPTIONS FOR SIDE ROADS, ENTRANCES, TURN LANES, ETC. WILL BE ALLOWED.

**ENGINEERS FIELD OFFICE**

ADD THE FOLLOWING SENTENCE TO THE END OF PARAGRAPH 670.02 (I) AND 670.04 (E): ALL OF THE TELEPHONE LINES PROVIDED SHALL HAVE UNPUBLISHED NUMBERS.

**PAVING SURFACE COURSE**

CONTINUOUS PAVING OPERATIONS ON THE MAIN ROADWAY SHALL BE MAINTAINED AT ALL TIMES DURING THE CONSTRUCTION OF THE HOT-MIX ASPHALT SURFACE. NO INTERRUPTIONS FOR SIDE ROADS, ENTRANCES, TURN LANES, ETC. WILL BE ALLOWED.

**ENVIRONMENT REVIEWS**

PRIOR TO THE USE OF ANY PROPOSED BORROW AREAS, USE AREAS (TEMPORARY ACCESS ROADS, DETOURS, RUN-AROUNDS, ETC.) AND/OR WASTE AREAS, THE CONTRACTOR SHALL FILE THE REQUIRED ENVIRONMENTAL RESOURCE REQUEST SURVEYS ACCORDING TO SECTION 107.22 OF THE STANDARD SPECIFICATIONS. THESE SURVEYS ARE REQUIRED IN ORDER FOR THE DEPARTMENT TO CONDUCT CULTURAL AND BIOLOGICAL RESOURCE SURVEYS FOR THE PROPOSED SITE.

PRIOR TO ANY WASTE MATERIALS BEING REMOVED FROM THE CONSTRUCTION SITE THE REQUIRED ENVIRONMENTAL RESOURCE SURVEYS WILL NEED TO BE OBTAINED AND FILED BY THE CONTRACTOR. EXCESS WASTE PRODUCTS REMOVED FROM THE CONSTRUCTION SITE SHALL BE DISPOSED OF AS REQUIRED IN SECTION 202.03 OF THE STANDARD SPECIFICATIONS.

ANY PROTRUDING METAL BARS SHALL BE REMOVED PRIOR TO THE DISPOSAL OF BROKEN CONCRETE AT APPROVED DISPOSAL SITES. THE REQUIRED ENVIRONMENTAL RESOURCE DOCUMENTATION SHALL INCLUDE THE FOLLOWING:

- \* BDE FORM 2289 (ENVIRONMENTAL SURVEY REQUEST)
- \* A LOCATION MAP SHOWING THE SIZE LIMITS AND LOCATION OF THE USE AREA
- \* SIGNED PROPERTY OWNER AGREEMENT FORM-D4 PI0100
- \* COLOR PHOTOGRAPHS DEPICTING THE USE AREA
- \* BORROW AREA ENTRY AGREEMENT FORM-D4 PI0101

PLEASE NOTE THAT A MINIMUM OF TWO WEEKS SHALL BE ALLOWED FOR THE DISTRICT TO OBTAIN THE REQUIRED ENVIRONMENTAL CLEARANCES.

**CROSSING EXISTING STRUCTURES WITH EQUIPMENT**

THE FOLLOWING STRUCTURES SN 072-0160 SN 048-0018 MAY BE CROSSED WITH LOADED MTD

ANY STRUCTURES NOT LISTED ABOVE SHALL BE VERIFIED BY THE RESIDENT PRIOR TO BEGINNING WORK.

REVISIONS	
NAME	DATE

ILLINOIS DEPARTMENT OF TRANSPORTATION

GENERAL NOTES  
IL 78 (FAP 22)

DRAWN BY  
CHECKED BY  
DATE

F.A.P. RTE.	SECTION	COUNTY	TOTAL SHEETS	SHEET NO.
22	48RS-2	PEORIA KNOX	26	3

**GENERAL NOTES (CONTINUED)**

**PAVEMENT STATIONING NUMBERS & PLACEMENT**

THE CONTRACTOR SHALL PROVIDE LABOR AND MATERIALS REQUIRED TO IMPRINT PAVEMENT STATION NUMBERS IN THE FINISHED SURFACE OF THE PAVEMENT AND/OR OVERLAY. THE NUMBERS SHALL BE APPROXIMATELY 3/4 INCH (20MM) WIDE, 5 INCHES (125 MM) HIGH AND 5/8 INCH (15 MM) DEEP.

THE PAVEMENT STATION NUMBERS SHALL BE INSTALLED AS SPECIFIED HEREIN:

INTERVAL - 200 FEET (ENGLISH STATIONING) OR 100 METERS (METRIC STATIONING)

BOTTOM OF NUMBERS - 6 INCHES (150 MM) FROM THE INSIDE EDGE OF THE PAVEMENT MARKING

**LOCATION:**

- \* 2, 3, & 5 LANE PAVEMENTS - RIGHT EDGE OF PAVEMENT IN DIRECTION OF INCREASING STATIONS
- \* MULTI-LANE DIVIDED ROADWAYS - OUTSIDE EDGE OF PAVEMENT IN BOTH DIRECTIONS
- \* RAMPS - ALONG BASELINE EDGE OF PAVEMENT

POSITION - STATIONS SHALL BE PLACED SO THEY CAN BE READ FROM THE ADJACENT SHOULDER

FORMAT - ENGLISH (METRIC) PAVEMENT STATIONS SHALL USE THIS FORMAT \*XXX (XX+X00)" WHERE X REPRESENTS THE PAVEMENT STATION.

THIS WORK WILL NOT BE PAID FOR SEPARATELY, BUT WILL BE CONSIDERED INCLUDED IN THE COST OF THE ASSOCIATED PAVEMENT AND/OR OVERLAY PAY ITEMS.

**JOB SPECIFIC NOTES**

**SIDEROADS**

Milling and Resurfacing limits need to be verified by the Resident Engineer prior to each operation.

**HMA SURFACE REMOVAL**

HMA SURFACE REMOVAL 2 1/4" AND VARIABLE DEPTHS SHALL BE PAID FOR AS HMA SURFACE REMOVAL 3/4" (SEE RAILROAD STRUCTURE MILLING DETAIL)

**PAVEMENT MARKING**

PRIOR TO PLACING CENTERLINE STRIPING, CONTACT THE DISTRICT BUREAU OF OPERATION FOR A "NO PASSING ZONE" EVALUATION

**HOT-MIX ASPHALT MIXTURE REQUIREMENT**

Mixture Use(s):	Surface Course	Level Binder 3/4"	CI D Patches	HMA Shoulder (Surface Lift)
ACPG:	PG 64-22	SBS or SBR 70-22	PG 64-22	To be paved with mainline
RAP% (Max): **	15%	10%	25%	
Design Air Voids:	4.0% @ N=50	3.0% @ N=50	4.0% @ N=50	
Mixture Composition (Gradation Mixture)	IL 9.5 or IL12.5	IL 4.75	IL 19.0	
Friction Aggregate:	Mixture D	N.A.	N.A.	

\*\* If RAP option is selected, the asphalt cement grade may need to be adjusted, this will be determined by the Materials Engineer.

NOTE: THIS PROJECT INCORPORATES THE BAILEY METHOD FINE GRADED IL 9.5 FOR LEVEL BINDER

REVISIONS	
NAME	DATE

ILLINOIS DEPARTMENT OF TRANSPORTATION  
  
GENERAL NOTES  
IL 78 (FAP 22)  
  
DRAWN BY  
CHECKED BY  
DATE

F.A.P. RTE.	SECTION	COUNTY	TOTAL SHEETS	SHEET NO.
22	48RS-2	PEORIA KNOX	26	4

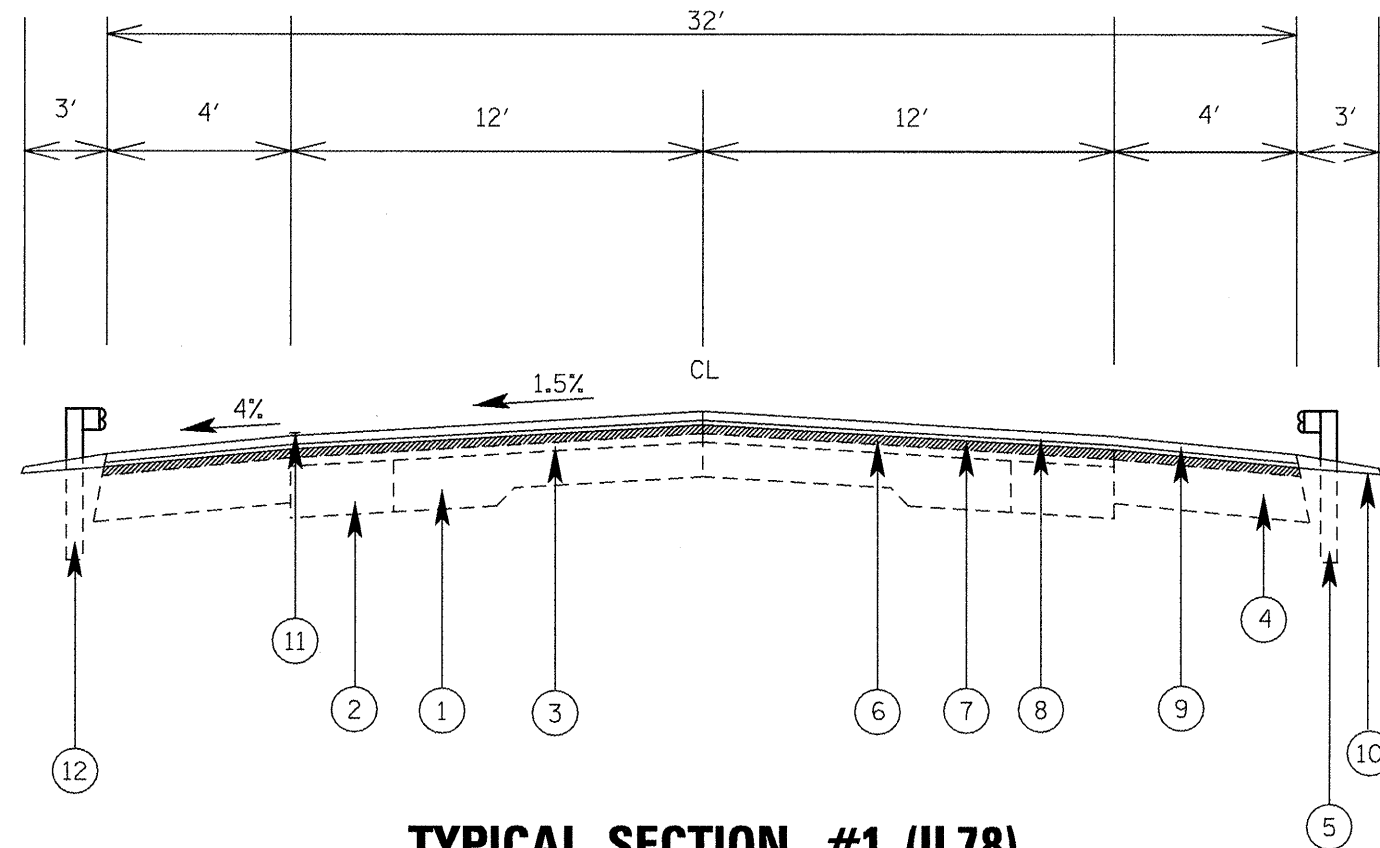
## SUMMARY OF QUANTITIES

CODE NO.	PAY ITEM	UNIT	TOTAL QUANTITY	1000	
				Peoria 100%	State 100%
40600215	POLYMERIZED BITUMINOUS MATERIALS (PRIME COAT)	TON	59	39	20
40600300	AGGREGATE (PRIME COAT)	TON	339	225	114
40600826	POLYMERIZED LEVELING BINDER (MACHINE METHOD), IL-4.75,	TON	4,733	3,138	1,595
40600895	CONSTRUCTING TEST STRIP <span style="float: right;">N50</span>	EACH	1	1	
40600982	HOT-MIX ASPHALT SURFACE REMOVAL - BUTT JOINT	SQ YD	1,946	473	1,473
40600990	TEMPORARY RAMP	SQ YD	312	66	246
40603335	HOT-MIX ASPHALT SURFACE COURSE, MIX "D", N50	TON	9,464	6,276	3,188
44000152	HOT-MIX ASPHALT SURFACE REMOVAL, 3/4"	SQ YD	112,641	74,698	37,943
44201803	CLASS D PATCHES, TYPE II, 13 INCH	SQ YD	1,391	816	575
44201807	CLASS D PATCHES, TYPE III, 13 INCH	SQ YD	146	131	15
44201809	CLASS D PATCHES, TYPE IV, 13 INCH	SQ YD	29		29
48101200	AGGREGATE SHOULDERS, TYPE B	TON	3,502	2,389	1,113
* 63100167	TRAFFIC BARRIER TERMINAL, TYPE 1 (SPECIAL) TANGENT	EACH	22	12	10
63200310	GUARDRAIL REMOVAL	FOOT	550	300	250
67000400	ENGINEER'S FIELD OFFICE, TYPE A	CAL MO	4	4	
67100100	MOBILIZATION	L SUM	1	1	
70100460	TRAFFIC CONTROL AND PROTECTION, STANDARD 701306	L SUM	1	1	
70100600	TRAFFIC CONTROL AND PROTECTION, STANDARD 701336	L SUM	1	1	
70300100	SHORT-TERM PAVEMENT MARKING	FOOT	15,266	10,558	4,708
70300220	TEMPORARY PAVEMENT MARKING - LINE 4"	FOOT	102,019	66,100	35,919
70300280	TEMPORARY PAVEMENT MARKING - LINE 24"	FOOT	24		24
70301000	WORK ZONE PAVEMENT MARKING REMOVAL	SQ FT	1,018	704	314
* 78100100	RAISED REFLECTIVE PAVEMENT MARKERS	EACH	360	262	98
* 78200410	GUARDRAIL MARKERS, TYPE A	EACH	40	24	16
* 78201000	TERMINAL MARKER - DIRECT APPLIED	EACH	22	12	10
78300200	RAISED REFLECTIVE PAVEMENT MARKERS REMOVAL	EACH	360	262	98
X0301512	GUARDRAIL AGGREGATE EROSION CONTROL	TON	168	91	77
X0322729	MATERIAL TRANSFER DEVICE	TON	10,603	7,064	3,539
X2503100	MOWING	UNIT	306	153	153
X7015005	CHANGEABLE MESSAGE SIGN	CAL DA	14	7	7
* X7800610	URETHANE PAVEMENT MARKING - LINE 4"	FOOT	102,019	66,100	35,919
* X7800680	URETHANE PAVEMENT MARKING - LINE 24"	FOOT	24		24
XZ013798	CONSTRUCTION STATION LAYOUT	LSUM	1		1
Z0048665	RAILROAD PROTECTIVE LIABILITY INSURANCE	LSUM	1	1	

\*SPECIALTY ITEM

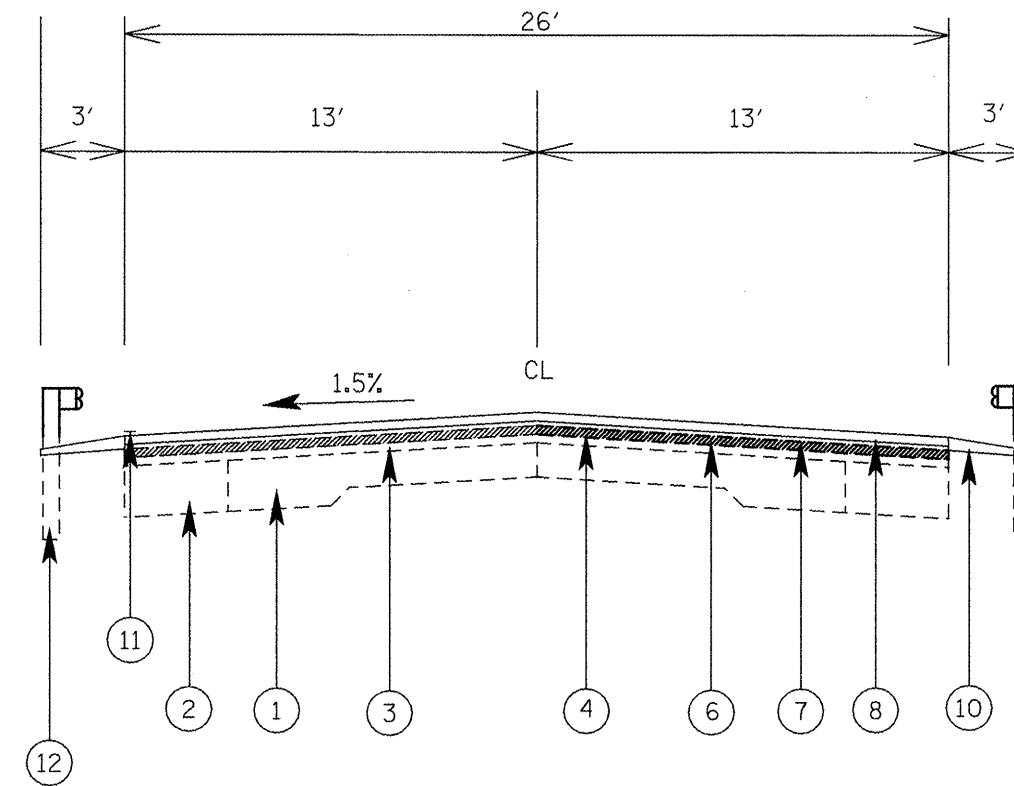
SUMMARY OF  
QUANTITIES

F.A.P. RTE.	SECTION	COUNTY	TOTAL SHEETS	SHEET NO.
22	48RS-2	PEORIA KNOX	26	5



**TYPICAL SECTION #1 (IL78)**

STATION 1+10 to 108+45  
 STATION 108+45 to 109+71 (BRIDGE OMMISION)  
 STATION 109+71 to 212+25 (PEORIA KNOX COUNTY LINE)



**TYPICAL SECTION # 2 (IL78)**

STATION 212+25 TO 235+50 (PEORIA KNOX COUNTY LINE)  
 STATION 235+50 TO 236+76 (BRIDGE OMISSION)  
 STATION 280+55 TO 283+15 (RAILROAD STRUCTURE)  
 STATION 236+76 TO 297+50 (EAST LEG)  
 STATION 236+76 TO 297+90 (WEST LEG)

**LEGEND EXISTING**

- 1. EXISTING P.C.C. PAVEMENT 9-6-9
- 2. EXISTING BIT BASE CSE WIDENING 12"
- 3. EXISTING BIT CONC. 3"
- 4. EXISTING BIT SHOULDER 8"
- 5. EXISTING GUARDRAIL

**LEGEND PROPOSED**

- 6. PROPOSED HMA SURFACE REMOVAL, 3/4"
- 7. PROPOSED POLYMERIZED LEVELING BINDER, N50, 3/4"
- 8. PROPOSED HMA SURFACE CSE, MIX D, N50, 1 1/2"
- 9. PROPOSED SHOULDER HMA SURFACE CSE, MIX D N50, 1 1/2"
- 10. PROPOSED AGG SHOULDERS TY. B
- 11. PROPOSED PAINT PAVEMENT MARKING 4"
- 12. PROPOSED GUARDRAIL SEE SCHEDULE

REVISIONS	
NAME	DATE

ILLINOIS DEPARTMENT OF TRANSPORTATION

TYPICAL SECTIONS  
 IL 78 (FAP 22)

DRAWN BY  
 CHECKED BY  
 DATE

F.A.P. NO.	SECTION	COUNTY	TOTAL SHEETS	SHEET NO.
22	48RS-2	PEORIA	26	6

LOCATION	LENGTH	WIDTH	AREA		HMA SURF REM (3/4")	POLY LEVEL BIND(MM) IL-4.75, N50 (3/4")	HMA SURF CSE MIX "D" N50 (1 1/2")	POLY BIT MAT (PR CT)	AGG (PR CT)	AGG SHLD TYPE B (RT/LT)	
			(SQ.FT)	(SQ.YD)							(SQ.YD)
<b>PEORIA COUNTY</b>											
1+30 TO 108+15	10,685	24	256,440.00	28,493.33	28,493.33	1,196.72	2,393.44	14.82	85.48	1,216.90	
<b>BRIDGE OMISSION (072-0160) STA. 108+45 TO 109+71</b>											
110+01 TO 212+25	10,224	24	245,376.00	27,264.00	27,264.00	1,145.09	2,290.18	14.18	81.79	1,164.40	
<b>HMA SHOULDERS</b>											
1+10 TO 212+25	21,115	8	168,920.00	18,768.89	18,768.89	788.29	1,576.59	9.76	56.31		
<b>KNOX COUNTY</b>											
212+25 TO 235+20	2,295	26	59,670.00	6,630.00	6,630.00	278.46	556.92	3.45	19.89	261.38	
<b>BRIDGE OMISSION (048-0018) STA. 235+50 TO 236+76</b>											
237+06 TO 280+55	4,349	26	113,074.00	12,563.78	12,563.78	527.68	1,055.36	6.53	37.69	495.30	
280+55 TO 283+15	260	26	6,760.00	751.11	751.11	31.55	63.09	0.39	2.25	29.61	
283+15 TO 289+00	585	26	15,210.00	1,690.00	1,690.00	70.98	141.96	0.88	5.07	66.63	
<b>EAST LEG</b>											
289+00 TO 297+50	850	26	22,100.00	2,455.56	2,455.56	103.13	206.27	1.28	7.37	96.81	
<b>WEST LEG</b>											
289+00 TO 297+90	890	26	23,140.00	2,571.11	2,571.11	107.99	215.97	1.34	7.71	101.36	
GORE AREA "WEST" STA. 296+20	178	43	7,654.00	850.44	850.44	35.72	71.44	0.44	2.55	20.27	
GORE AREA "EAST" STA. 295+50	173	46	7,958.00	884.22	884.22	37.14	74.27	0.46	2.65	19.70	
GORE AREA "SOUTH" STA. 289+00	200	53	10,600.00	1,177.78	1,177.78	49.47	98.93	0.61	3.53	22.78	
<b>HMA SHOULDERS</b>											
212+25 TO 289+00	7,675	8	61,400.00	6,822.22	6,822.22	286.53	573.07	3.55	20.47		
289+00 TO 297+50	850	8	6,800.00	755.56	755.56	31.73	63.47	0.39	2.27		
289+00 TO 297+90	890	8	7,120.00	791.11	791.11	33.22	66.45	0.41	2.37		
<b>SIDE ROADS</b>											
STA.107+20 KORTH RD	40	25	1,000.00	111.11	111.11	4.67	9.33	0.06	0.33	4.56	
STA. 212+25 GRAND CHAPEL RD	25	22	550.00	61.11	61.11	2.57	5.13	0.03	0.18	2.85	
PEORIA COUNTY	42,089		672,286	74,698	74,698	3,138	6,276	39	225	2,388.71	
KNOX COUNTY	19,195		341,486	37,943	37,943	1,595	3,188	20	194	1,113.83	
<b>TOTALS</b>											
<b>GRAND TOTALS</b>	<b>61,284</b>		<b>1,013,772</b>	<b>112,641</b>	<b>112,641</b>	<b>4,733</b>	<b>9,464</b>	<b>59</b>	<b>419</b>	<b>3,503</b>	

\* SEE MILLING DETAIL (RAILROAD STRUCTURE) FOR TAPER LENGTHS (STA 280+55 TO 283+15)  
 \* HMA SURF REMOVAL 2 1/4" AND VARIABLE DEPTHS SHALL BE PAID FOR AS HMA SURF REMOVAL 3/4"

SCHEDULE OF QUANTITIES

F.A.P. RTE.	SECTION	COUNTY	TOTAL SHEETS	SHEET NO.
22	48RS-2	PEORIA KNOX	26	7

LOCATION	WIDTH	AVRG. WIDTH	HOT-MIX ASPHALT SURF REMOVAL-BUTT JOINT	TEMP RAMP
	FT	FT	SQ YD	SQ YD
<b>PEORIA COUNTY</b>				
STARTING STA. 1+10 TO 1+30	24.00	24.00	80.00	13.33
STA. 108+15 TO 108+45	24.00	24.00	80.00	13.33
STA. 107+20 Korth Rd	25.00	48.00	160.00	13.89
STA. 212+25 Grand Chapel Rd	22.00	22.00	73.33	12.22
STA. 109+71 TO 110+01	24.00	24.00	80.00	13.33
<b>KNOX COUNTY</b>				
STA. 235+20 TO 235+50	26.00	26.00	86.67	14.44
STA. 236+76 TO 237+06	26.00	26.00	86.67	14.44
EAST LEG ENDING STA. 297+20 TO 297+50	210.00	210.00	700.00	116.67
WEST LEG STA. 297+60 TO 297+90	180.00	180.00	600.00	100.00
PEORIA COUNTY			473.33	53.89
KNOX COUNTY			1,473.33	257.78
<b>Total</b>			<b>1,947</b>	<b>312</b>

<b>URETHANE PAVEMENT MARKING SCHEDULE</b>			
LOCATION	LINE 4"		LINE 24 "
	WHITE	YELLOW	WHITE
	FOOT	FOOT	FOOT
<b>PEORIA COUNTY</b>			
STA. 1+10 TO 212+25	41,945	24,155	
<b>KNOX COUNTY</b>			
STA. 212+25 TO 297+90	19,360	16,559	24.00
<b>Total</b>	<b>61,305</b>	<b>40,714</b>	<b>24</b>
<b>NOTE : PRIOR TO PLACING CENTERLINE STRIPING, CONTACT THE DISTRICT BUREAU OF OPERATION FOR A " NO PASSING ZONE " EVALUATION</b>			

**RATES:**

FOR ALL HOT MIXES: 112 lbs/Sq.Yd.in.

FOR AGGREGATE SHOULDERS TYPE B: 2.05 ton/cu.yd

FOR BIT MATLS (PRIME COAT): 0.004 ton/gal

FOR AGG (PRIME COAT):

-ON GRANULAR BASE: 0.5 GAL/SQ. YD.

-ON EXIST PVT: 4 LBS/SQ. YD.

-ON EXIST. PVT.: 0.05 GAL/SQ.YD.

-ON COLD MILLED SURF: 4 LBSSQ.YD.

-ON COLD MILLED AREA: 0.1 GAL/SQ.YD.

-ON NEW PVT: 2 LBS/SQ.YD.

-ON NEW PAV'T: 0.03 GAL/SQ.YD.

<b>TEMPORARY PAINT PAVEMENT MARKING SCHEDULE</b>			
LOCATION	LINE 4"		LINE 24 "
	WHITE	YELLOW	WHITE
	FOOT	FOOT	FOOT
<b>PEORIA COUNTY</b>			
STA. 1+10 TO 212+25	41,945	24,155	
<b>KNOX COUNTY</b>			
STA. 212+25 TO 297+90	19,360	16,559	24.00
<b>Total</b>	<b>61,305</b>	<b>40,714</b>	<b>24</b>

SCHEDULE OF QUANTITIES



F.A.P. RTE.	SECTION	COUNTY	TOTAL SHEETS	SHEET NO.
22	48RS-2	PEORIA KNOX	26	8

RAISED REFLECTIVE PAVEMENT MARKING					
LOCATION			LENGTH	RAISED REF PAVEMENT	RAISED REF PVT MRKRS
			(FT)	(EACH)	(EACH)
<b>PEORIA COUNTY</b>					
1+10	TO	108+45	10,735	135.00	<b>360</b>
BRIDGE OMISSION 108+45 TO 109+71					
109+71	TO	212+25	10,254	129.00	
<b>KNOX COUNTY</b>					
212+25	TO	235+50	2,325	30.00	
BRIDGE OMISSION 235+50 TO 236+76					
236+76	TO	289+00	5,224	66.00	
<b>PEORIA COUNTY</b>			20,989	264.00	
<b>KNOX COUNTY</b>			7,549	96.00	
<b>TOTAL</b>			<b>28,538</b>	<b>360</b>	

CLASS D PATCHING SCHEDULE (13 INCH)					
*PATCHING UNITS	PEORIA COUNTY		KNOX COUNTY		
	TYPE II	TYPE III	TYPE II	TYPE III	TYPE VI
	SQ YD	SQ YD	SQ YD	SQ YD	SQ YD
1	815.99	130.66			
2			401.4	14.44	28.88
3 (WEST LEG)			69.32		
4 (EAST LEG)			103.98		
<b>TOTALS</b>	<b>816</b>	<b>131</b>	<b>575</b>	<b>15</b>	<b>29</b>

\* SEE LINE DIAGRAM FOR PATCHING UNITS

LOCATION		LENGTH	SHORT-TERM PAVT MARKINGS 4"	WORK ZONE PAVT MARKING REMOVAL
		(FT)	(FT)	(SQ FT)
<b>PEORIA COUNTY</b>				
1+10	TO	212+25	21,115	10,557.50
<b>KNOX COUNTY</b>				
212+25	TO	289+00	7,675	3,837.50
<b>EAST LEG</b>				
289+00	TO	297+50	850	425.00
<b>WEST LEG</b>				
289+00	TO	297+90	890	445.00
<b>PEORIA COUNTY</b>			21,115	10,557.50
<b>KNOX COUNTY</b>			9,415	4,707.50
<b>TOTAL</b>			<b>30,530</b>	<b>15,265</b>

MOWING		
LOCATION	LENGTH (FT)	RT/LT (UNIT)
1+10 to 289+00	28,790	288
289+00 TO 297+50 EAST LEG	850	9
289+00 TO 297+90 WEST LEG	890	9
<b>TOTAL</b>	<b>30,530</b>	<b>306</b>

SCHEDULE OF QUANTITIES



F.A.P. RTE.	SECTION	COUNTY	TOTAL SHEETS	SHEET NO.
22	48R5-2	PEORIA KNOX	26	9

LT/RT	LOCATION							Existing G.R. Removal	Traffic Barrier Terminal Type 1 Special	Terminal Marker Direct Appiled	Guardrail Markers, Type A	G.R. Agg Erosion Control
	EXISTING			LENGTH	PROPOSED							
	STA.	-	STA.		STA.	-	STA.					
							FEET	EACH	EACH	EACH	TON	
RT	13+45	-	13+70	25	13+20	-	13+70	25	1	1	2	7.59
LT	13+35	-	13+60	25	13+10	-	13+60	25	1	1	2	7.59
RT	23+81	-	24+06	25	23+56	-	24+06	25	1	1	2	7.59
LT	23+88	-	24+13	25	23+88	-	24+38	25	1	1	2	7.59
RT	55+75	-	56+00	25	55+50	-	56+00	25	1	1	2	7.59
LT	56+25	-	56+50	25	56+00	-	56+50	25	1	1	2	7.59
RT	57+00	-	57+25	25	56+75	-	57+25	25	1	1	2	7.59
RT	57+50	-	57+75	25	57+25	-	57+75	25	1	1	2	7.59
LT	58+75	-	59+00	25	58+75	-	59+25	25	1	1	2	7.59
RT	59+00	-	59+25	25	59+00	-	59+50	25	1	1	2	7.59
Bridge Omision Sta. 108+45 To Sta. 109+71												
LT	123+37	-	123+62	25	123+12	-	123+62	25	1	1	2	7.59
LT	124+26	-	124+51	25	124+26	-	124+76	25	1	1	2	7.59
LT	222+00	-	222+25	25	222+00	-	222+50	25	1	1	2	7.59
LT	223+75	-	224+00	25	223+50	-	224+00	25	1	1	2	7.59
Bridge Omision Sta. 235+50 To Sta. 236+76												
RT	264+00	-	264+25	25	265+75	-	266+25	25	1	1	2	7.59
LT	264+00	-	264+25	25	265+75	-	266+25	25	1	1	2	7.59
RT	265+75	-	266+00	25	265+75	-	266+25	25	1	1	2	7.59
LT	265+75	-	266+00	25	265+75	-	266+25	25	1	1	2	7.59
RT	280+00	-	280+25	25	279+75	-	280+25	25	1	1	2	7.59
LT	280+70	-	280+95	25	280+70	-	281+20	25	1	1	2	7.59
RT	282+87	-	283+12	25	282+87	-	283+37	25	1	1	2	7.59
LT	282+87	-	283+12	25	282+87	-	283+37	25	1	1	2	7.59
* Terminal End Section Type 1 is 50' long												
<b>TOTAL</b>								550	22	22	40	168

SCHEDULE OF  
QUANTITIES

F.A.P. RTE.	SECTION	COUNTY	TOTAL SHEETS	SHEET NO.
22	48RS-2	PEORIA KNOX	26	10

CONSTRUCTING TEST STRIP	EACH
SURFACE COURSE	1
<b>TOTAL</b>	<b>1</b>

MATERIAL TRANSFER DEVICE	TON
SURFACE COURSE	10,603
<b>TOTAL</b>	<b>10,603</b>

ENGINEERING FIELD OFFICE TYPE A	CAL	MO
JOBSITE	4	
<b>TOTAL</b>	<b>4</b>	

CHANGEABLE MESSAGE SIGN	CAL	DA
2 BOARDS / 1 WEEK / JOBSITE	14	
<b>TOTAL</b>	<b>14</b>	

MOBILIZATION	L	SUM
JOBSITE	1	
<b>TOTAL</b>	<b>1</b>	

TRAF CONT & PROT STD 701336	L	SUM
JOBSITE	1	
<b>TOTAL</b>	<b>1</b>	

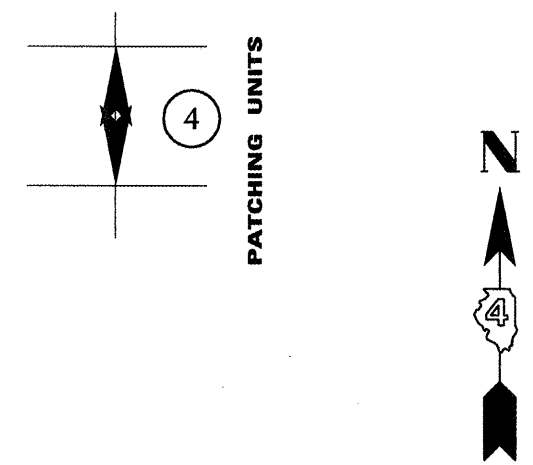
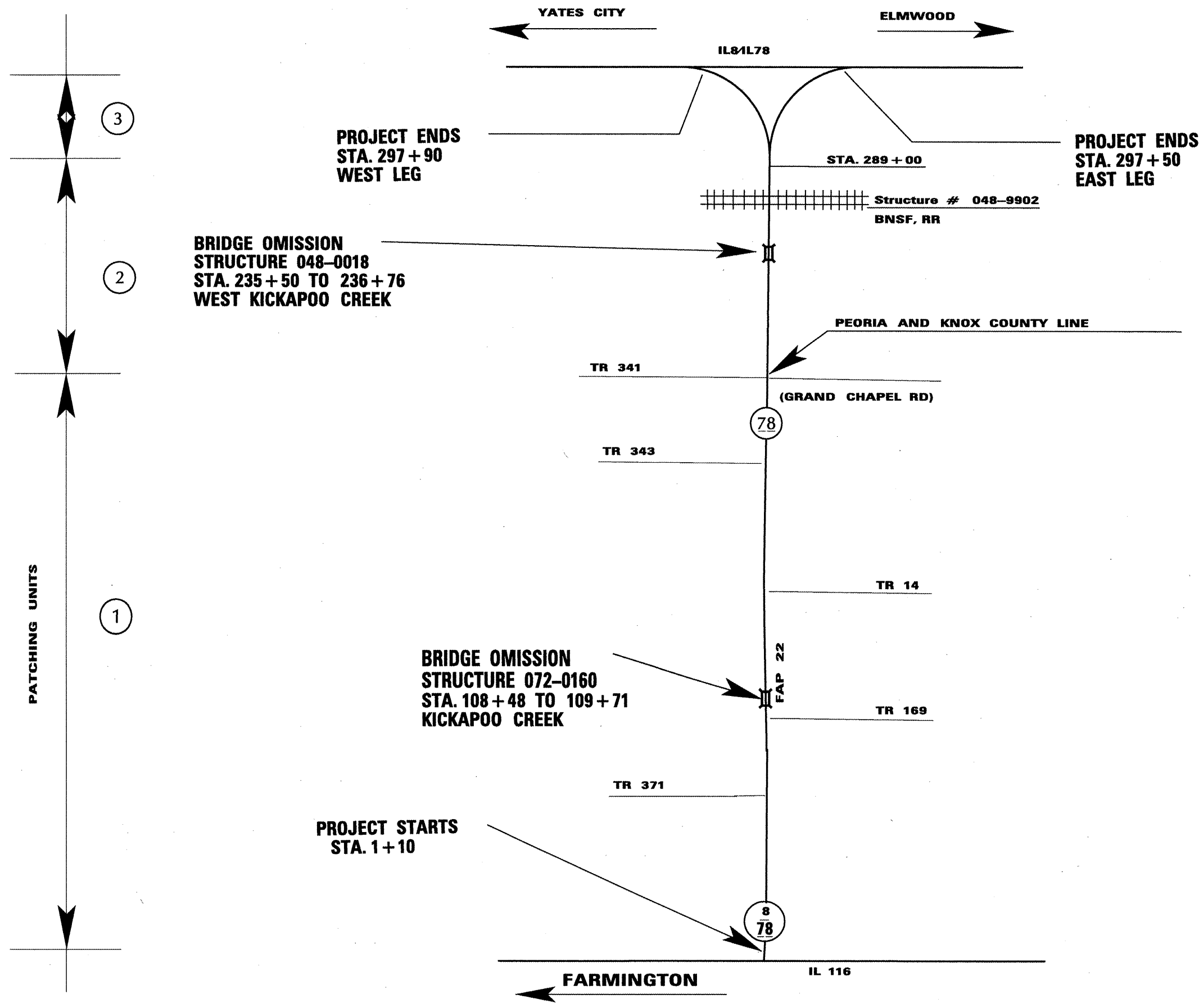
RAILROAD PROTECTIVE LIABILITY INSURANCE	L	SUM
JOBSITE	1	
<b>TOTAL</b>	<b>1</b>	

TRAF CONT & PROT STD 701306	L	SUM
JOBSITE	1	
<b>TOTAL</b>	<b>1</b>	

CONSTRUCTION STATION LAYOUT	L	SUM
JOBSITE	1	
<b>TOTAL</b>	<b>1</b>	

SCHEDULE OF QUANTITIES

F.A.P. RTE.	SECTION	COUNTY	TOTAL SHEETS	SHEET NO.
22	48R5-2	PEORIA KNOX	26	11

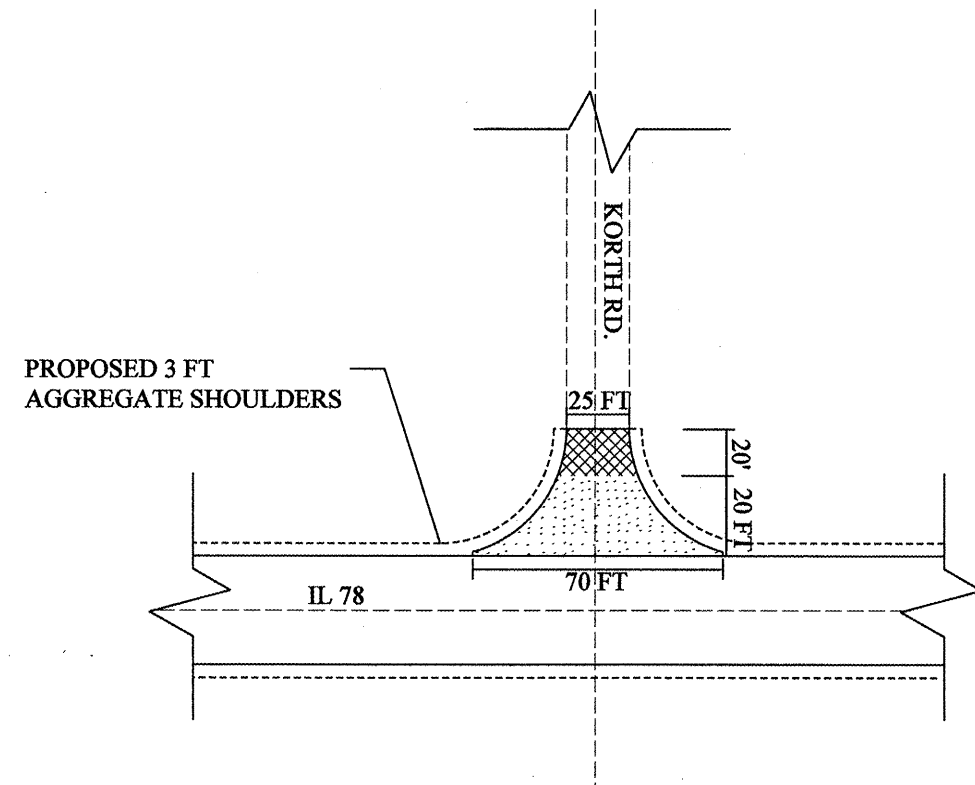


ILLINOIS DEPARTMENT OF TRANSPORTATION

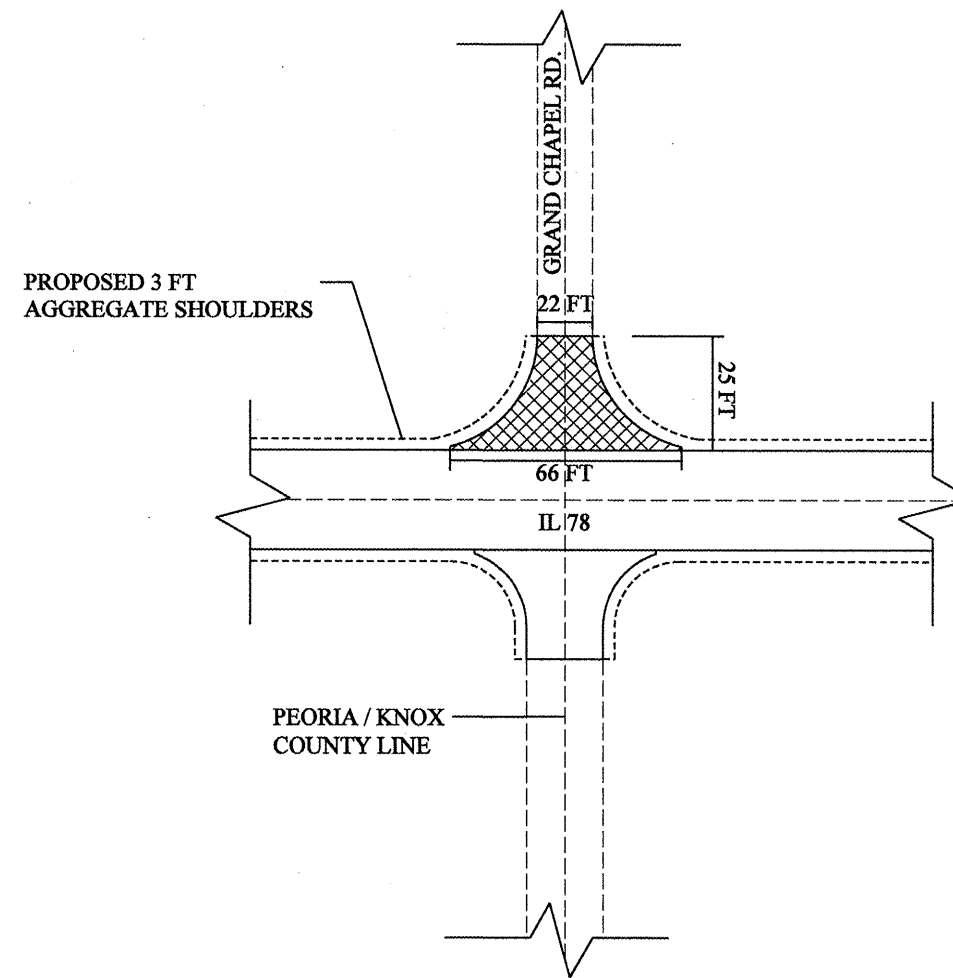
LINE DIAGRAM  
IL 78 (FAP 22)

DATE \_\_\_\_\_ DRAWN BY \_\_\_\_\_ CHECKED BY \_\_\_\_\_

F.A.P. RTE.	SECTION	COUNTY	TOTAL SHEETS	SHEET NO.
22	48RS-2	PEORIA KNOX	26	12



**KORTH RD. AND IL 78**  
Not to Scale



**GRAND CHAPEL RD AND IL 78**  
Not to Scale

**LEGEND:**

-  HMA SURFACE REMOVAL BUTT JOINT 1 1/2"
-  HMA SURFACE REMOVAL 3/4"

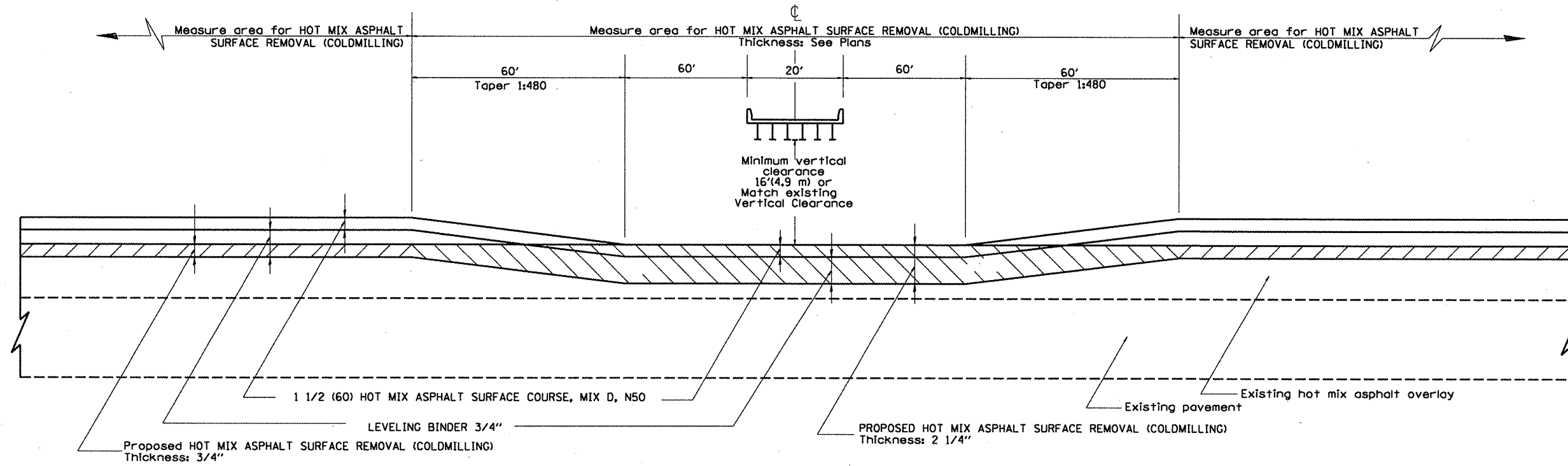
REVISIONS	
NAME	DATE

ILLINOIS DEPARTMENT OF TRANSPORTATION

**SIDERoadS DETAILS**

DRAWN BY \_\_\_\_\_  
CHECKED BY \_\_\_\_\_  
DATE \_\_\_\_\_

F.A.P. RTE.	SECTION	COUNTY	TOTAL SHEETS	SHEET NO.
22	48R5-2	PEORIA KNOX	26	13

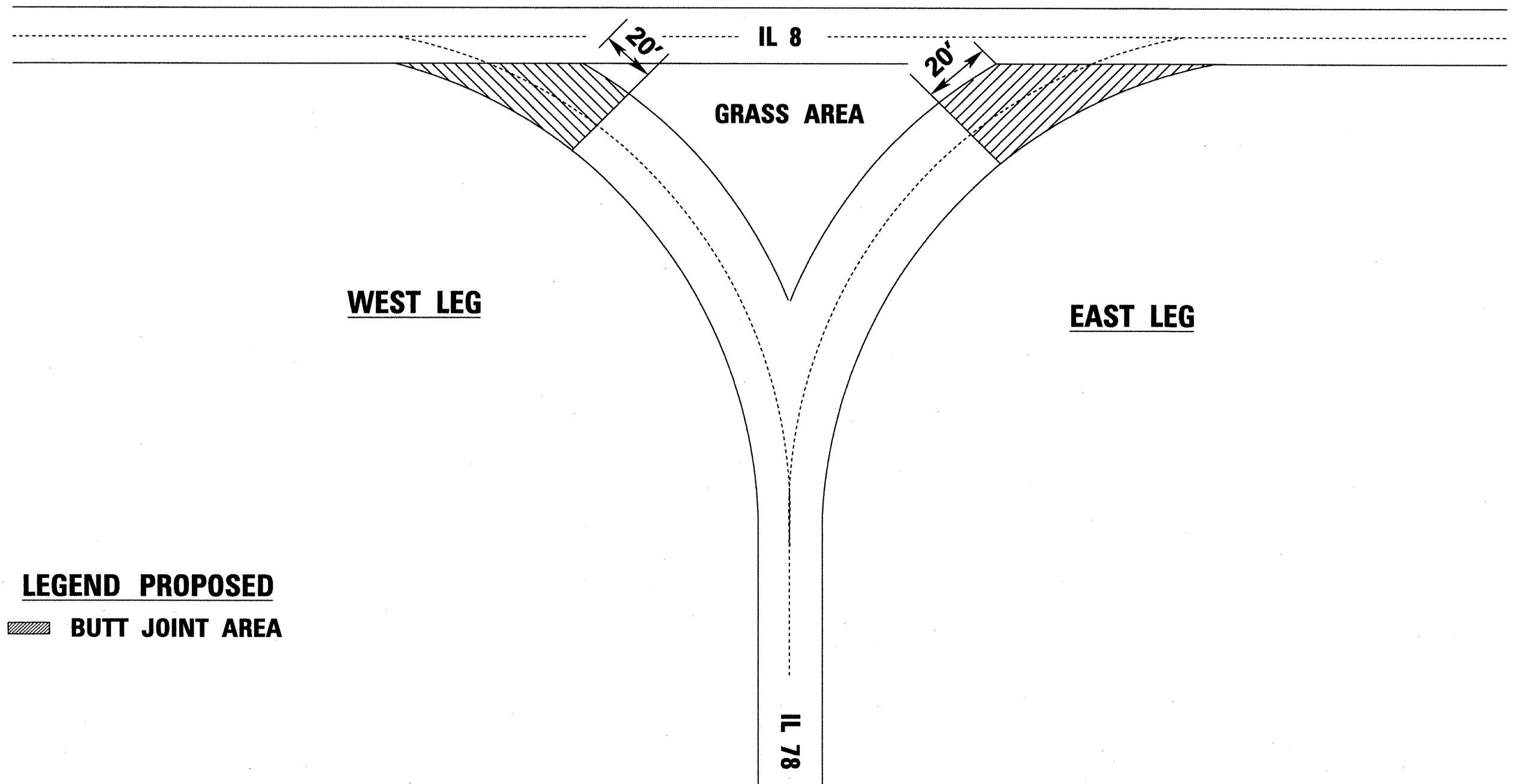


WITH HOT MIX ASPHALT SURFACE REMOVAL (COLD MILLING)

RAILROAD STRUCTURE  
STA. 280+55 TO 283+15

RAILROAD STRUCTURE  
MILLING DETAIL

F.A.P. RTE.	SECTION	COUNTY	TOTAL SHEETS	SHEET NO.
22	48RS-2	PEORIA KNOX	26	14



**WEST LEG**

**EAST LEG**

**GRASS AREA**

**IL 8**

**IL 78**

20'

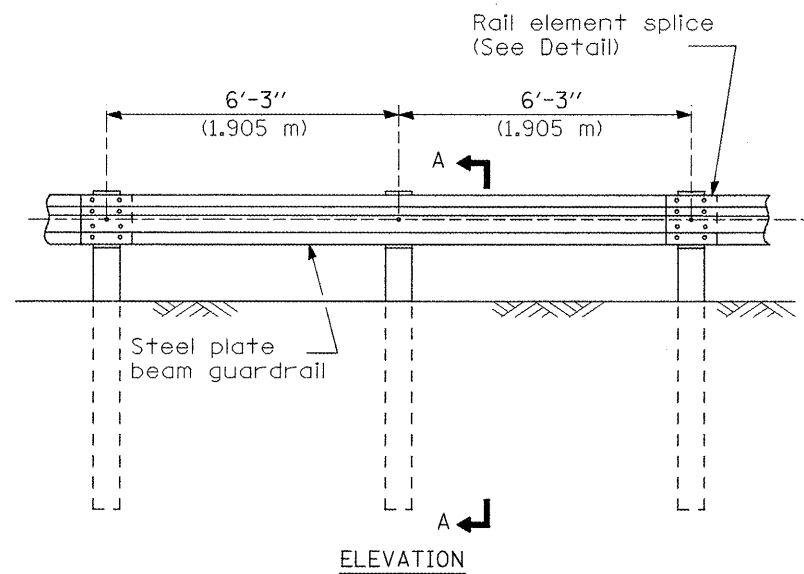
20'



**LEGEND PROPOSED**  
▨ BUTT JOINT AREA

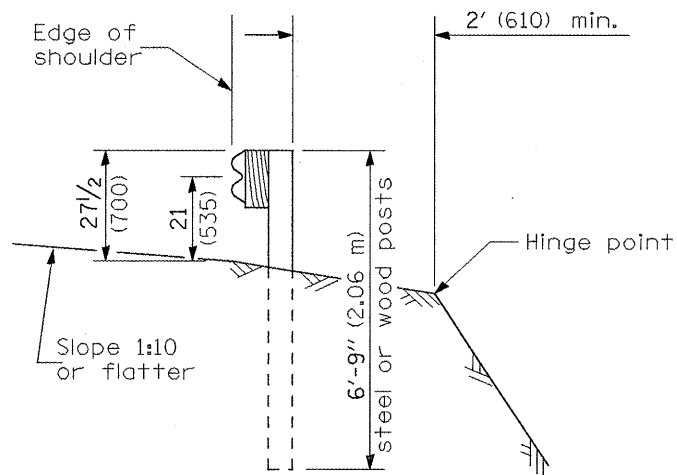
REVISIONS	
NAME	DATE

ILLINOIS DEPARTMENT OF TRANSPORTATION  
  
GORE DETAIL  
IL 78 (FAP 22)  
DRAWN BY \_\_\_\_\_  
CHECKED BY \_\_\_\_\_  
DATE \_\_\_\_\_

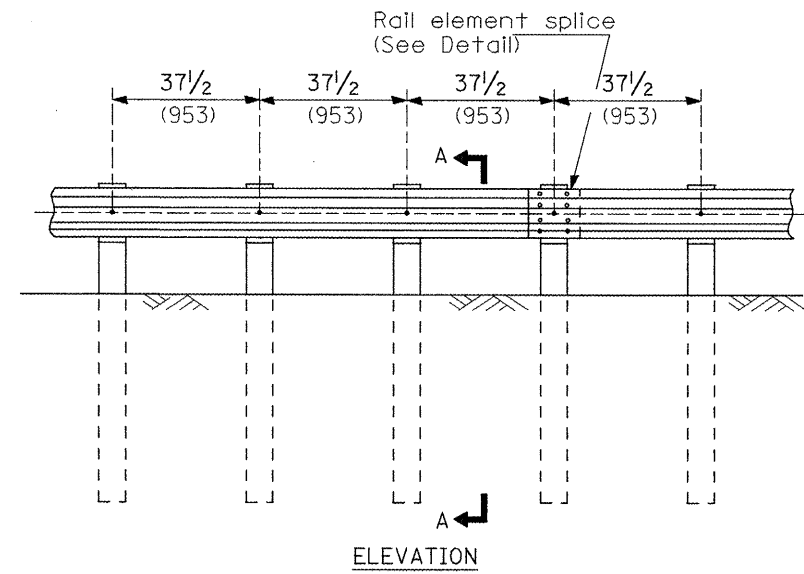


**TYPE A**

6'-3" (1.905 m) Typical post spacing

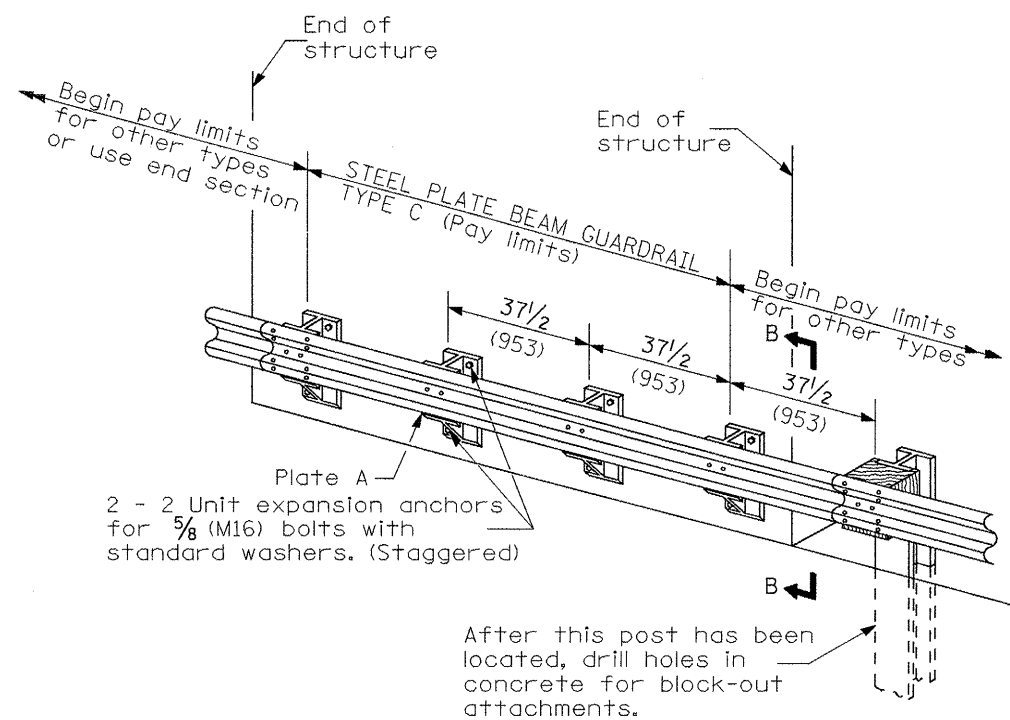


**SECTION A-A**



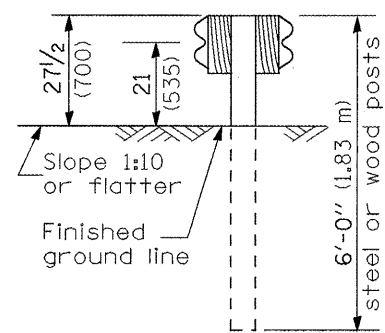
**TYPE B**

37 1/2 (953) Closed post spacing

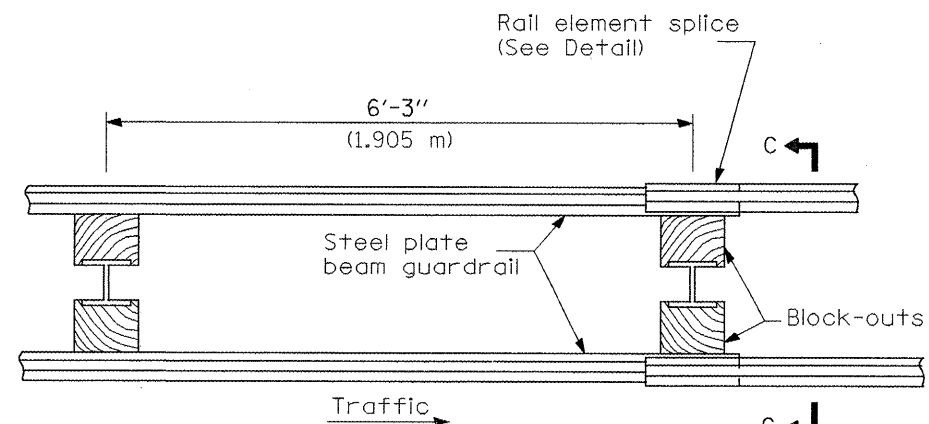


**TYPE C**

37 1/2 (953) Block-out spacing

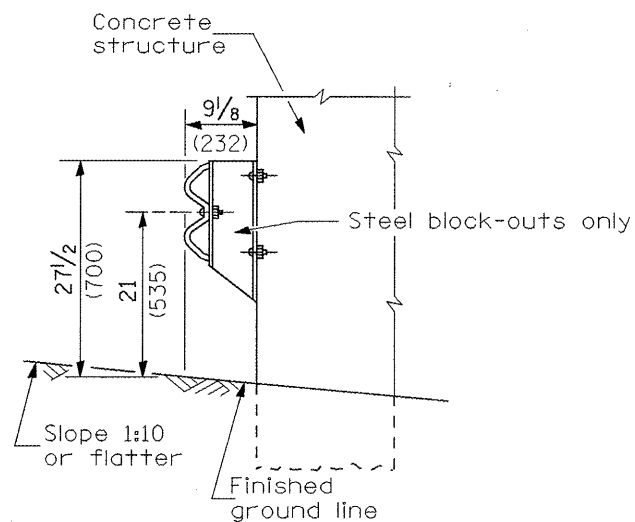


**SECTION C-C**



**TYPE D**

Double steel plate beam guardrail  
6'-3" (1.905 m) typical post spacing



**SECTION B-B**

**GENERAL NOTES**

All slope ratios are expressed as units of vertical displacement to units of horizontal displacement (V:H).

All dimensions are in millimeters (inches) unless otherwise shown.

The existing steel posts may be drilled to match the bolt pattern shown herein for the wood block-out, or a new steel post shall be provided.

This detail is applicable to the guardrail system used prior to January 1, 2007. For details on the Midwest Guardrail System, see Standard 630001.

All dimensions are in Inches (millimeters) unless otherwise noted.

03-01-07	NEW DETAIL	RJD
----------	------------	-----

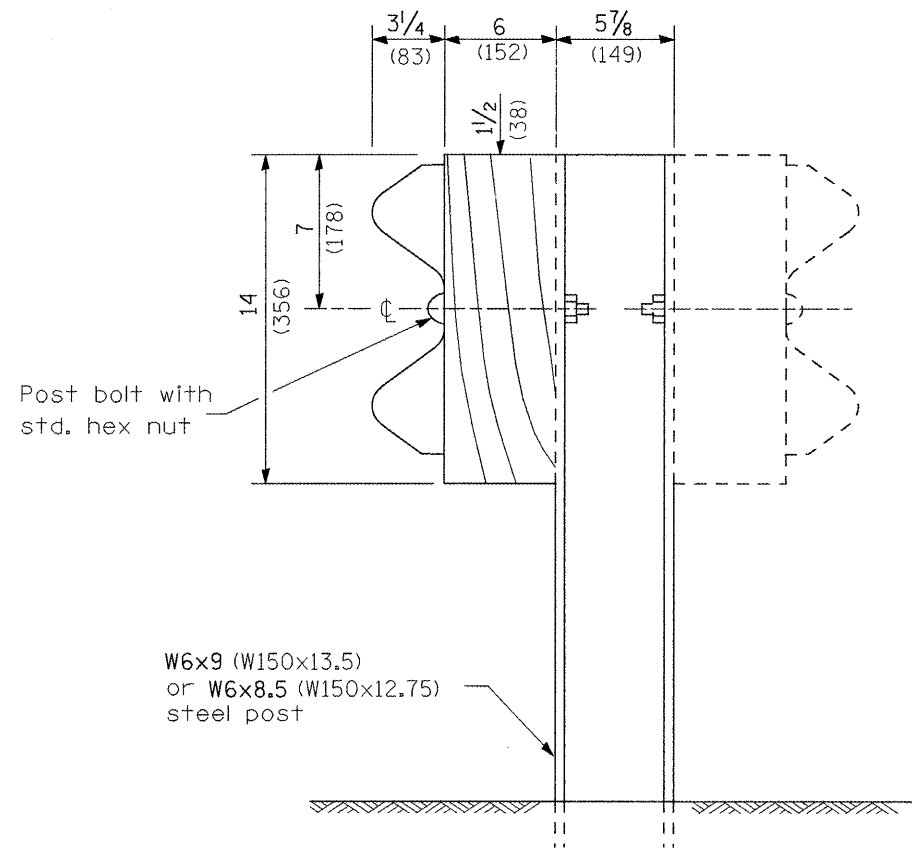
**STATE OF ILLINOIS  
DEPARTMENT OF TRANSPORTATION**

**GUARDRAIL INSTALLATION DETAIL**

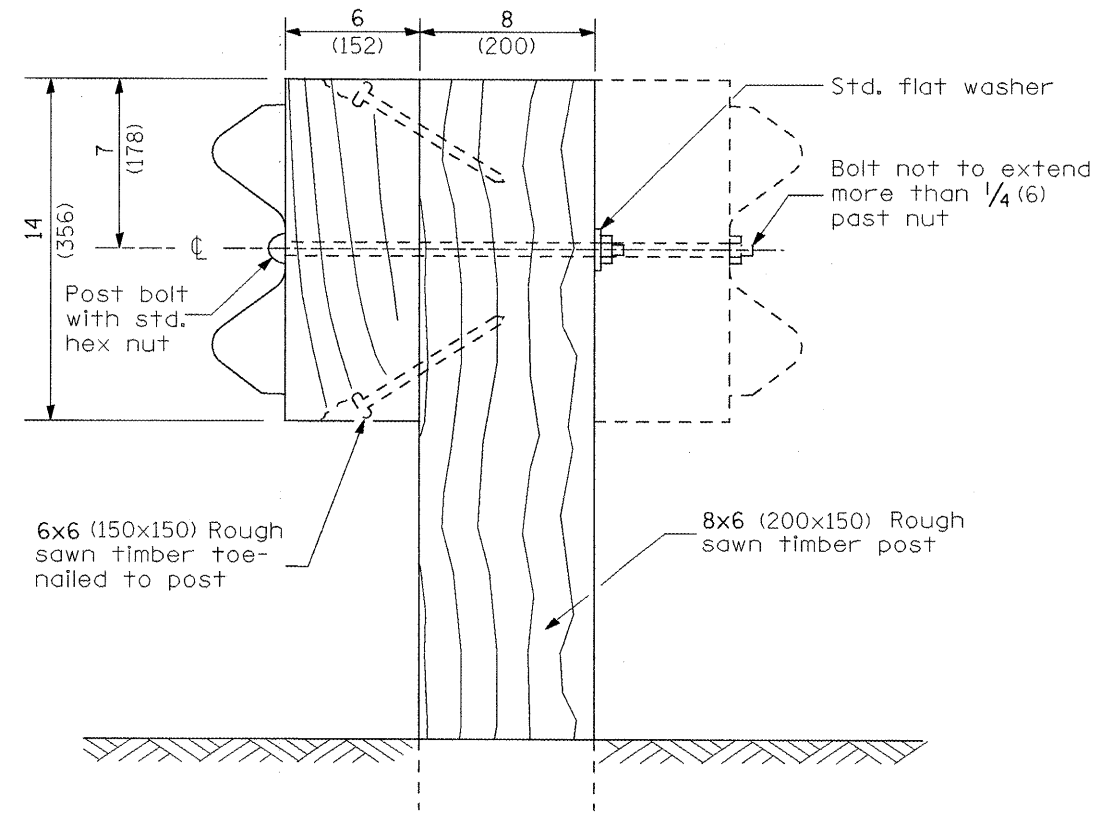
NOT TO SCALE SHEET NO. 1 OF 4 SHEETS

F.A.P. RTE.	SECTION	COUNTY	TOTAL SHEETS	SHEET NO.
22	48RS-2	PEORIA/KNOX	26	15
ILLINOIS			CONTRACT NO. 68633	

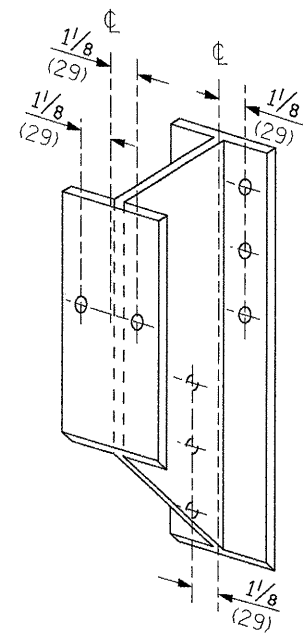




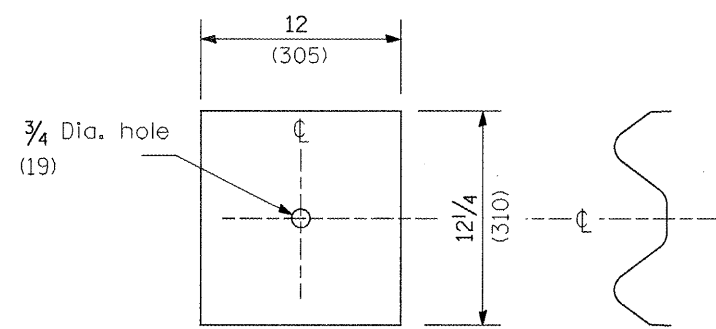
**STEEL POST CONSTRUCTION**



**WOOD POST CONSTRUCTION**



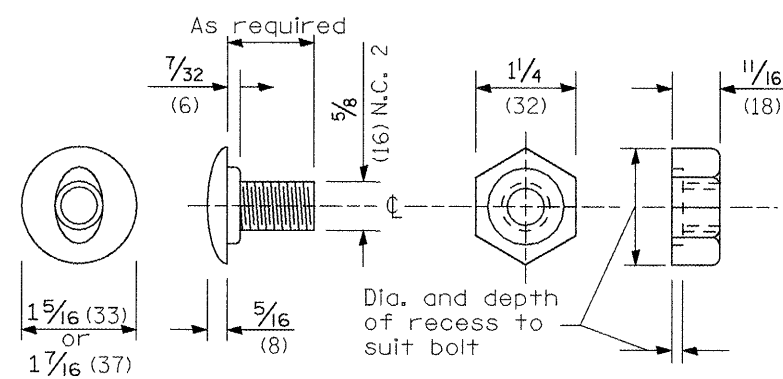
**STEEL BLOCK-OUT DETAIL**



**NOTE**

Plate A shall be placed between rail element and block-out at non-splice mounting points only when steel block-outs are used.

**PLATE A**



**POST OR SPLICE BOLT & NUT**

All dimensions are in Inches (millimeters) unless otherwise noted.

--	--	--	--	--	--	--	--	--	--

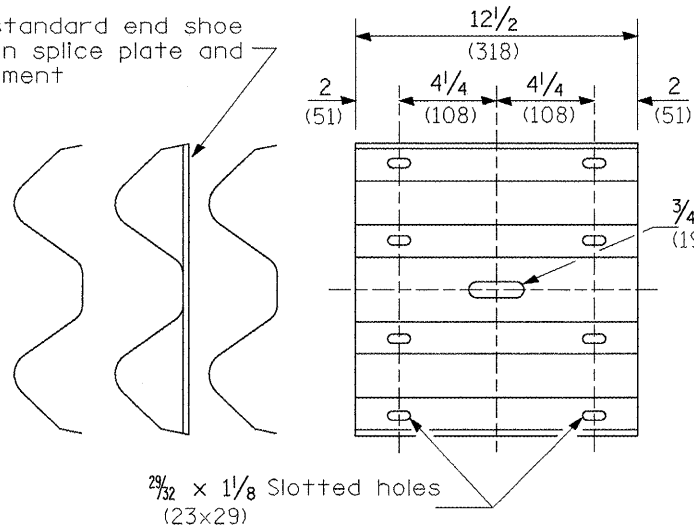
STATE OF ILLINOIS  
DEPARTMENT OF TRANSPORTATION

GUARDRAIL INSTALLATION DETAIL

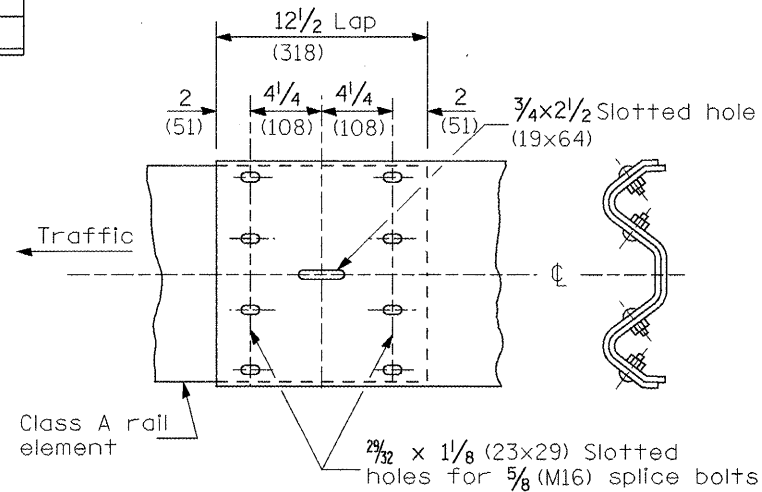
NOT TO SCALE SHEET NO. 2 OF 4 SHEETS

F.A.P. RTE. 698 699	SECTION 48RS-2	COUNTY PEORIA/KNOX	TOTAL SHEETS 26	SHEET NO. 16
CONTRACT NO. 68633				
ILLINOIS				

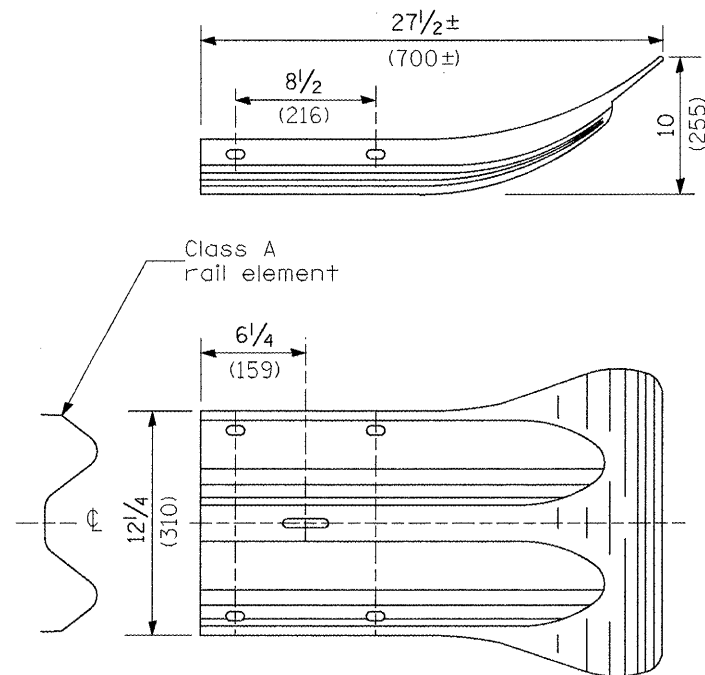
Place standard end shoe between splice plate and rail element



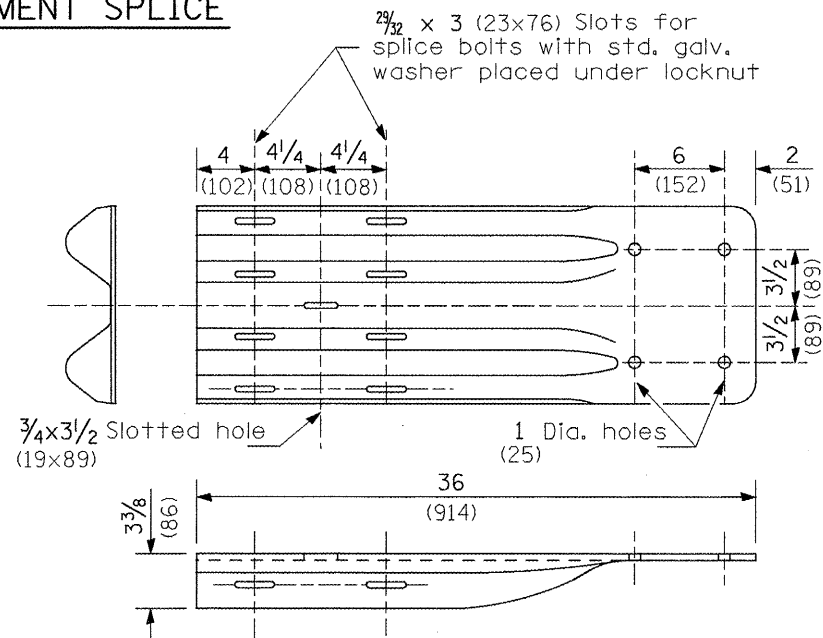
**SPLICE PLATE**



**RAIL ELEMENT SPLICE**



**END SECTION**



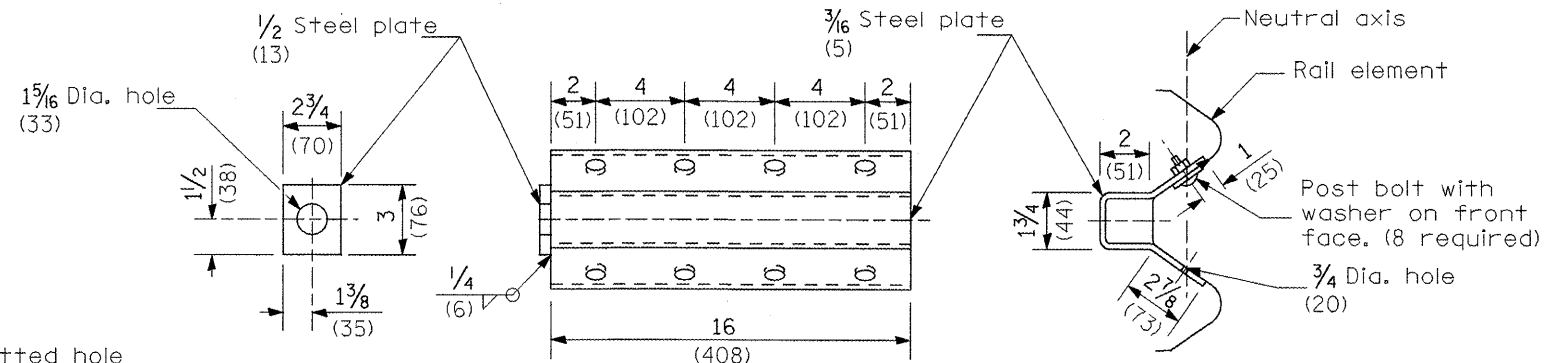
NOTE

When end shoe is attached to a bridge parapet which has an expansion joint, the bolts shall be provided with a locknut or double nut and shall be tightened only to a point that will allow guardrail movement.

The standard end shoe shall be attached to the concrete with pre-drilled or self-drilling anchor bolts. The anchor cone shall be set flush with the surface of the concrete.

Externally threaded studs protruding from the surface of the concrete will not be permitted.

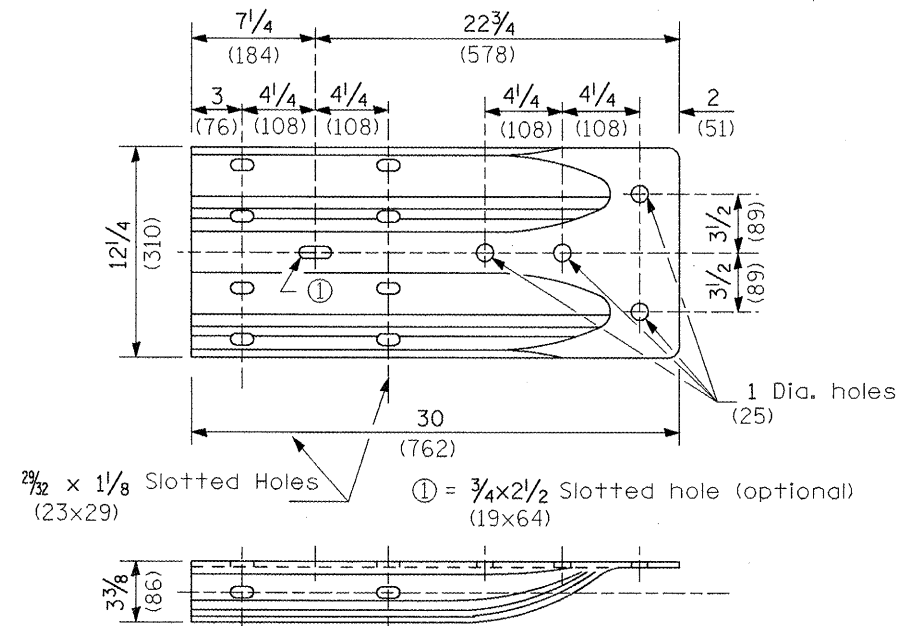
**END SHOE**



NOTE

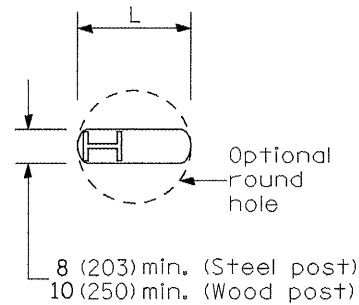
Anchor plate T shall be used to attach cable assembly to guardrail when required on traffic barrier terminals.

**ANCHOR PLATE T DETAILS**

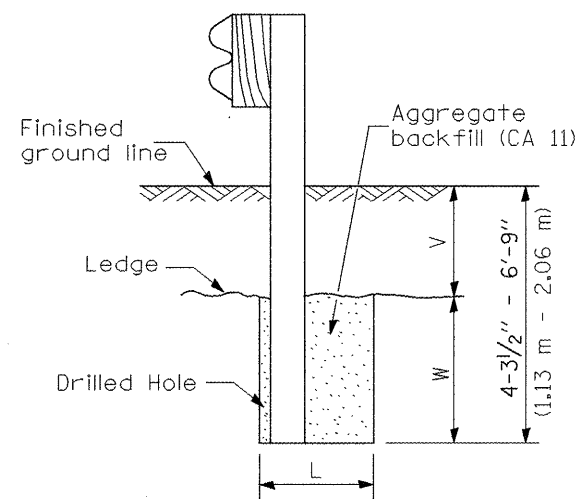


**ALTERNATE END SHOE**

All dimensions are in inches (millimeters) unless otherwise noted.



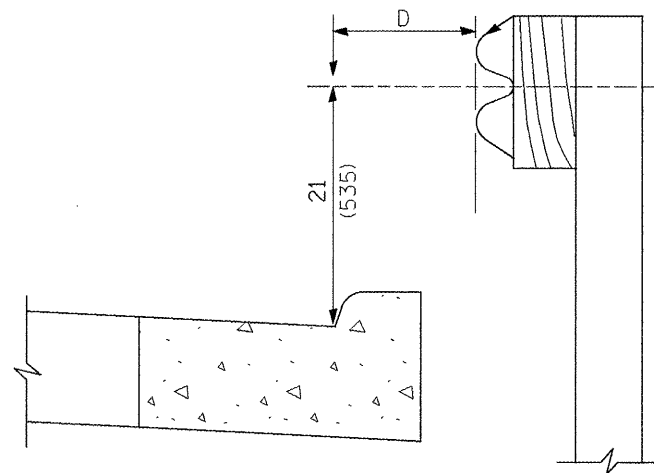
**PLAN**



Note:  
Ledge line is top of rock ledge or hard slag fill.

**ELEVATION**

**FOOTING FOR POST WHEN IMPERVIOUS MATERIAL IS ENCOUNTERED**

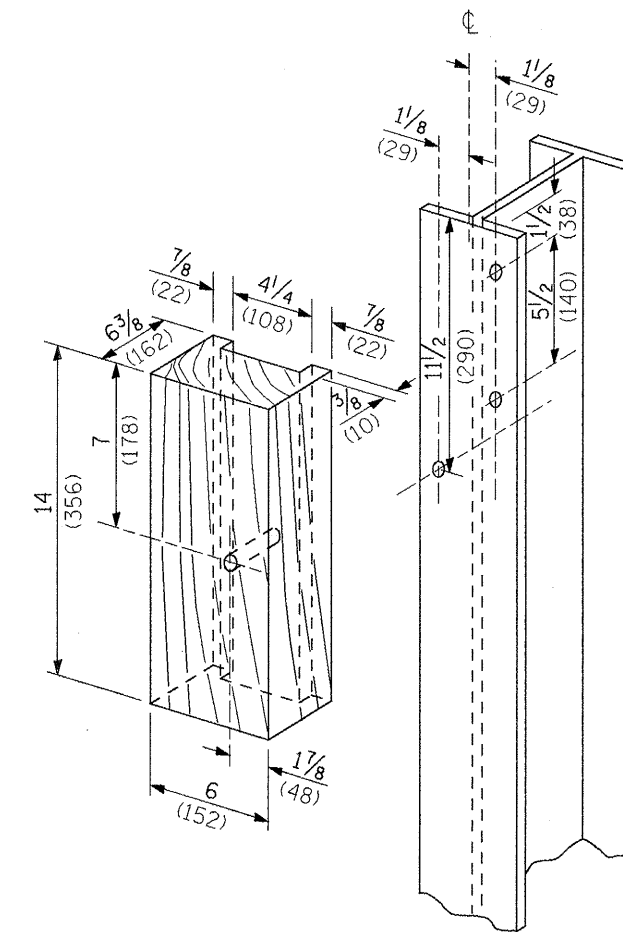


Note:  
If it is necessary for D to be more than 12 (300) and less than 10'-0" (3.0 m) type M-2 (M-5) curb and gutter (Std. 606001) shall be used in front of and in advance of the guardrail.

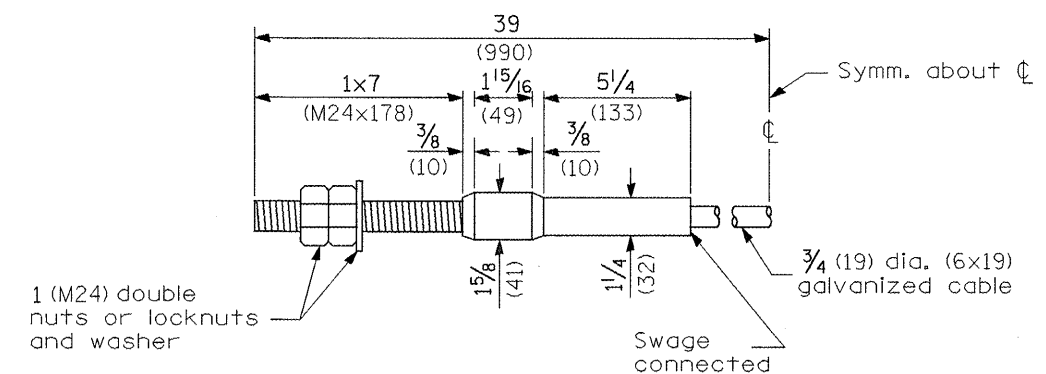
**GUARDRAIL PLACED BEHIND CURB**

(D = 0 desirable to 12 (300) maximum)

V	W	L	
		Steel Post	Wood Post
0 - 18 (0 - 460)	24 (610)	21 (530)	23 (580)
>18 - 41.5 (>460 - 825)	12 (305)	8 (203)	10 (250)
>41.5 - 53.5 (>825 - 1.13 m)	12 - 0 (305 - 0)	8 (203)	10 (250)



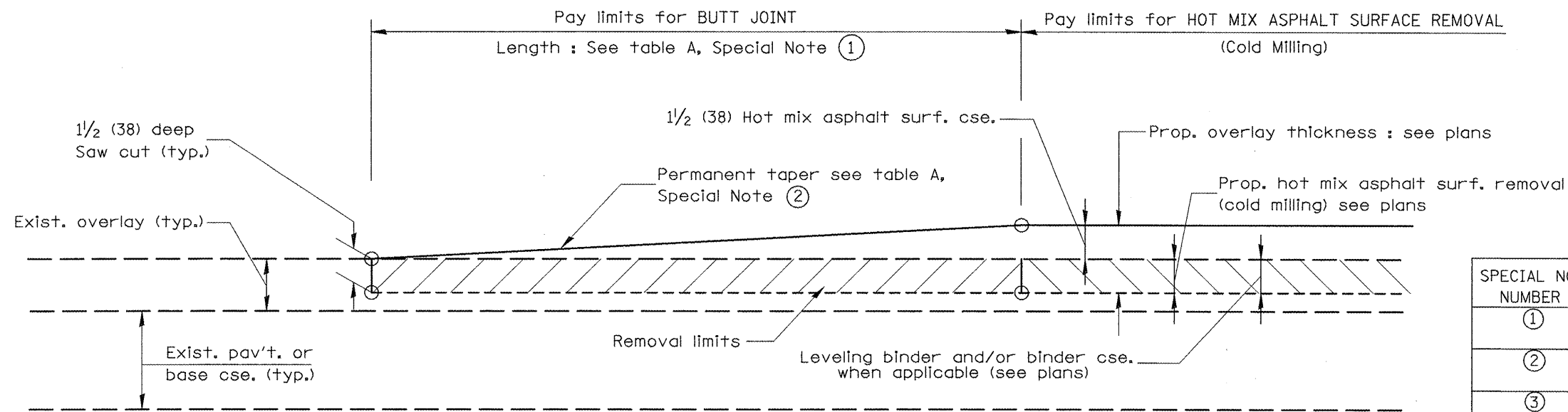
**WOOD BLOCK-OUT AND STEEL POST DETAILS**



**CABLE ASSEMBLY**

(18,100 kg (40,000 lbs.) min. breaking strength)  
Tighten to taut tension.

All dimensions are in inches (millimeters) unless otherwise noted.



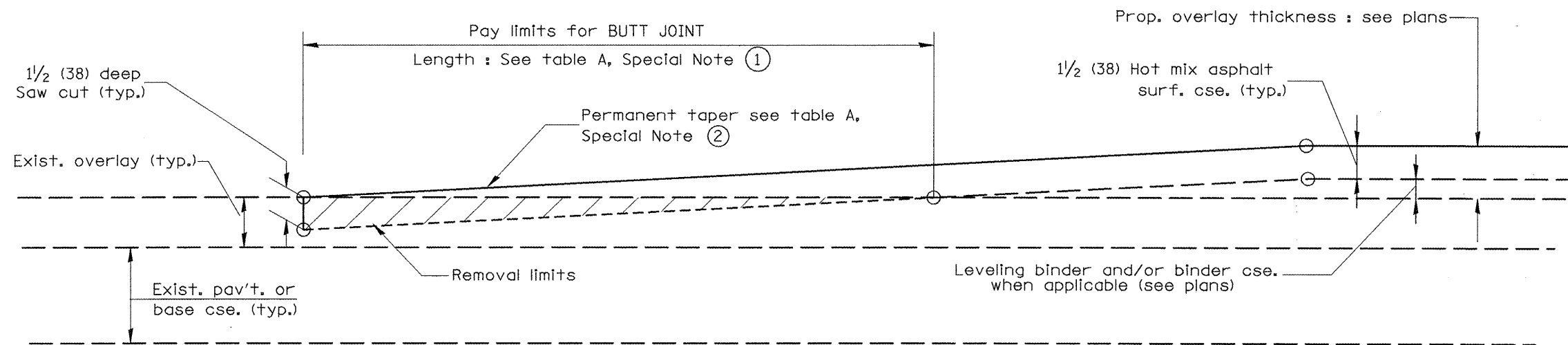
**CASE 1 : WITH HOT MIX ASPHALT SURFACE REMOVAL (COLD MILLING)**

**TABLE A**  
(LENGTHS AND TAPER RATES)

SPECIAL NOTE NUMBER	ELEMENT	MAINLINE INTERSTATES & 4-LANE EXPRESSWAYS	ALL OTHERS
①	LENGTH OF BUTT JOINT	60'(18.0 m)	30'(9.0 m)
②	PERMANENT TAPER RATE	1:480	1:240
③	TEMPORARY RAMP TAPER RATE	1:80	1:40
④	TEMPORARY RAMP LENGTH	10'(3.0 m)	5'(1.5 m)
⑤	LENGTH OF BUTT JOINT	10'(3.0 m)	10'(3.0 m)

**GENERAL NOTES**

1. The work shall be done in accordance with Article 406.08 and the Special Provision for Butt Joints.
2. The pavement surface to be removed may be either bituminous or P.C. concrete. The work shall be performed in accordance with Article 440.04 and the Special Provisions for Butt Joints.
3. The saw cut joints shall be primed just prior to the placing of bituminous material. The work will be in accordance with the applicable portions of Article 406.05.



**CASE 2 : NO HOT MIX ASPHALT SURFACE REMOVAL (COLD MILLING)**

All dimensions are in inches (millimeters) unless otherwise noted.

01-01-97	RENUM. C-23.01, NEW REVISION BOX	T.P.
04-01-97	CORRECTION TO DEPTH	J.A.
09-15-05	REVISED DESIGNER NOTE	M.M.A.
10-16-06	REVISED TO 2007 SPEC.	M.A.

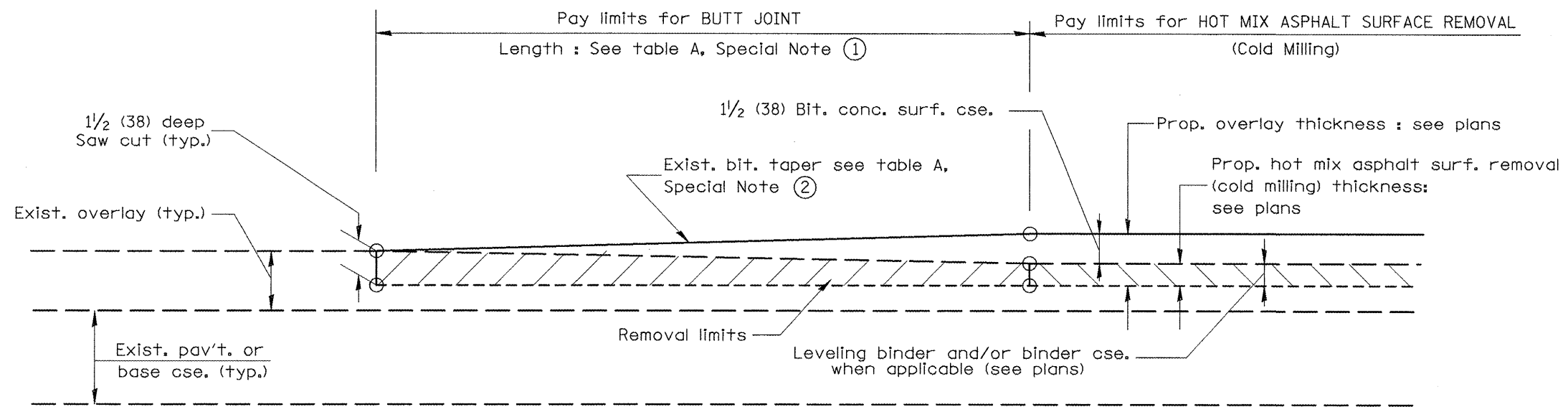
**STATE OF ILLINOIS**  
**DEPARTMENT OF TRANSPORTATION**

**BUTT JOINTS**

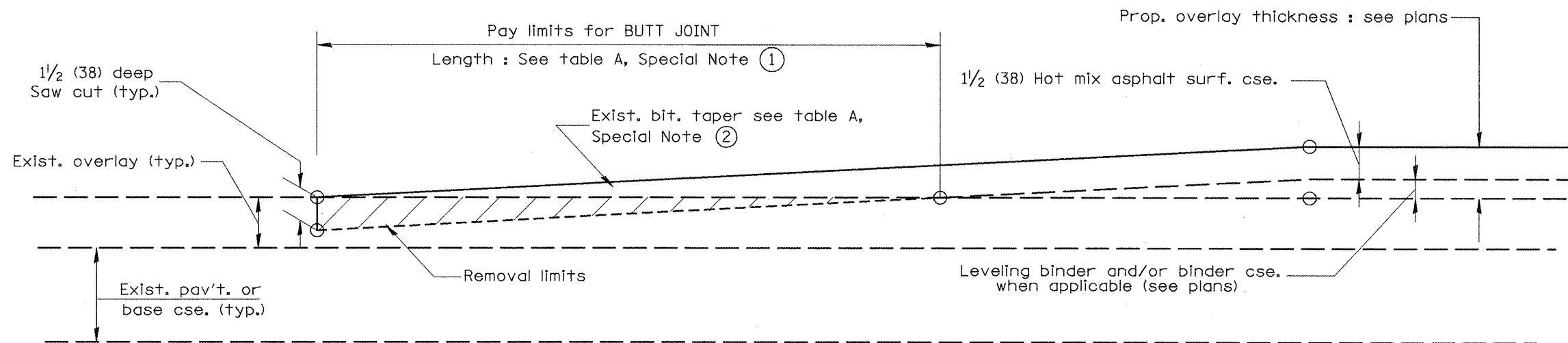
NOT TO SCALE

SHT. 1 OF 3  
CADD STD. 406101-D4

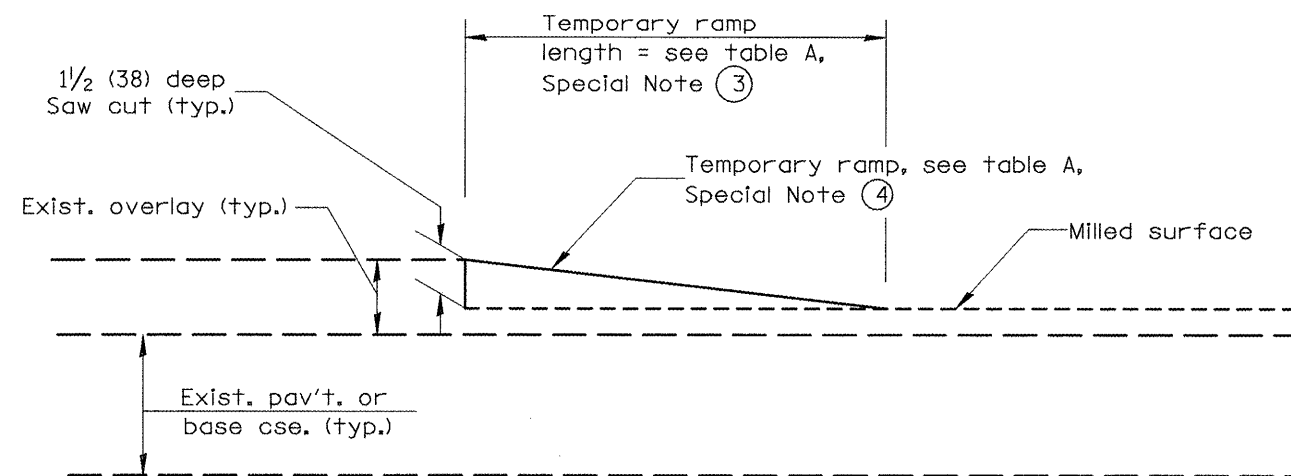
F.A.P. RTE.	SECTION	COUNTY	TOTAL SHEETS	SHEET NO.
22	48RS-2	PEORIA/KNOX	26	19
FED. ROAD DIST. NO. ILLINOIS FED. AID PROJECT			CONTRACT NO. 68633	



**CASE 3 : WITH HOT MIX ASPHALT SURFACE REMOVAL (COLD MILLING)  
TIE-IN TO EXISTING BITUMINOUS TAPER**



**CASE 4 : NO HOT MIX ASPHALT SURFACE REMOVAL (COLD MILLING)  
TIE-IN TO EXISTING BITUMINOUS TAPER**



**DETAIL TEMPORARY RAMP**

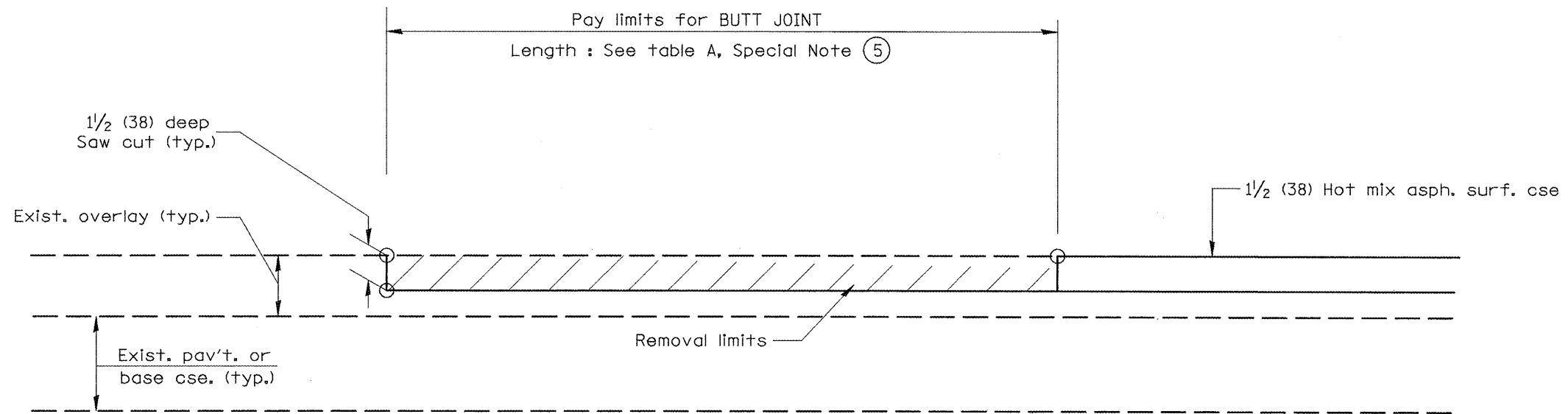
All dimensions are in inches (millimeters) unless otherwise noted.

--	--	--	--	--	--	--	--	--	--

**STATE OF ILLINOIS  
DEPARTMENT OF TRANSPORTATION**

**BUTT JOINTS**  
NOT TO SCALE

F.A.P. RTE.	SECTION	COUNTY	TOTAL SHEETS	SHEET NO.
22	48RS-2	PEORIA/KNOX	26	20
CADD STD. 406101-D4			CONTRACT NO. 68633	
FED. ROAD DIST. NO.		ILLINOIS FED. AID PROJECT		



**CASE 5 : WITH HOT MIX ASPHALT SURFACE REMOVAL (COLD MILLING)  
TIE-IN TO EXISTING BITUMINOUS TAPER**

All dimensions are in inches (millimeters) unless otherwise noted.

STATE OF ILLINOIS  
DEPARTMENT OF TRANSPORTATION

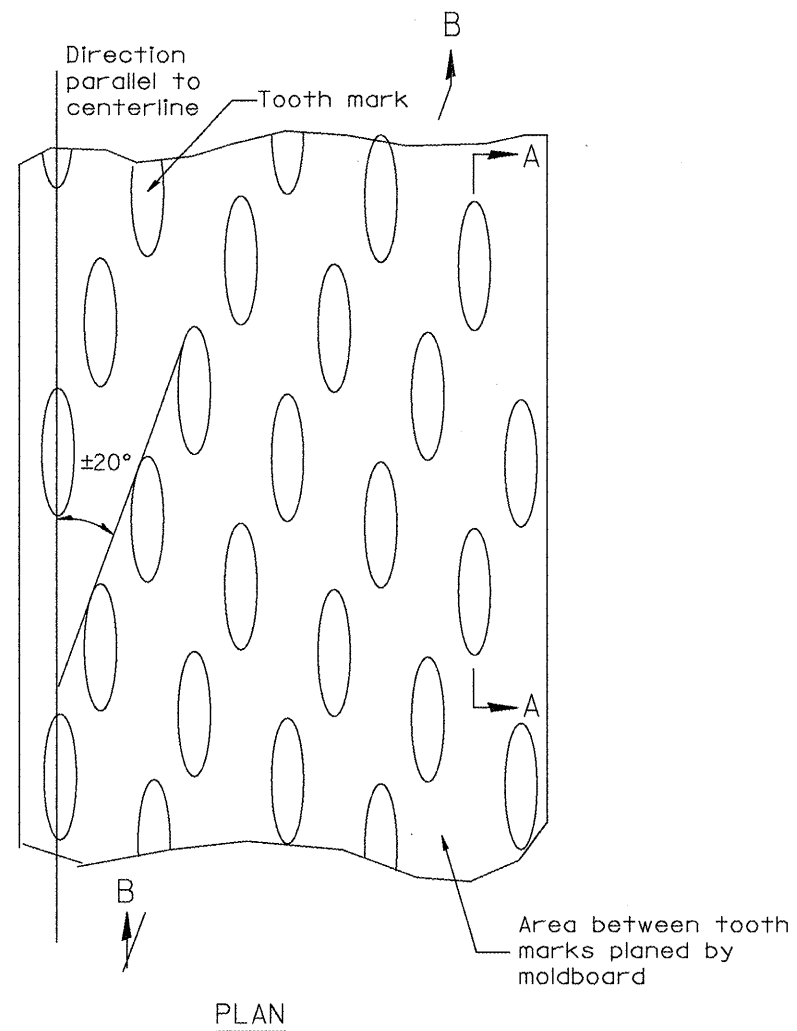
BUTT JOINTS

NOT TO SCALE

SHT. 3 OF 3  
CADD STD. 406101-D4

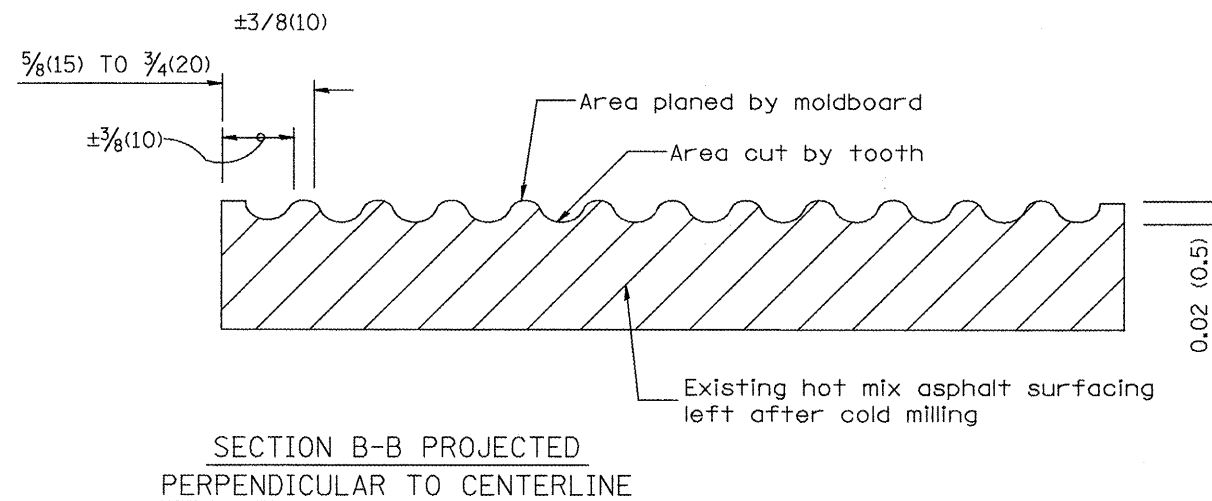
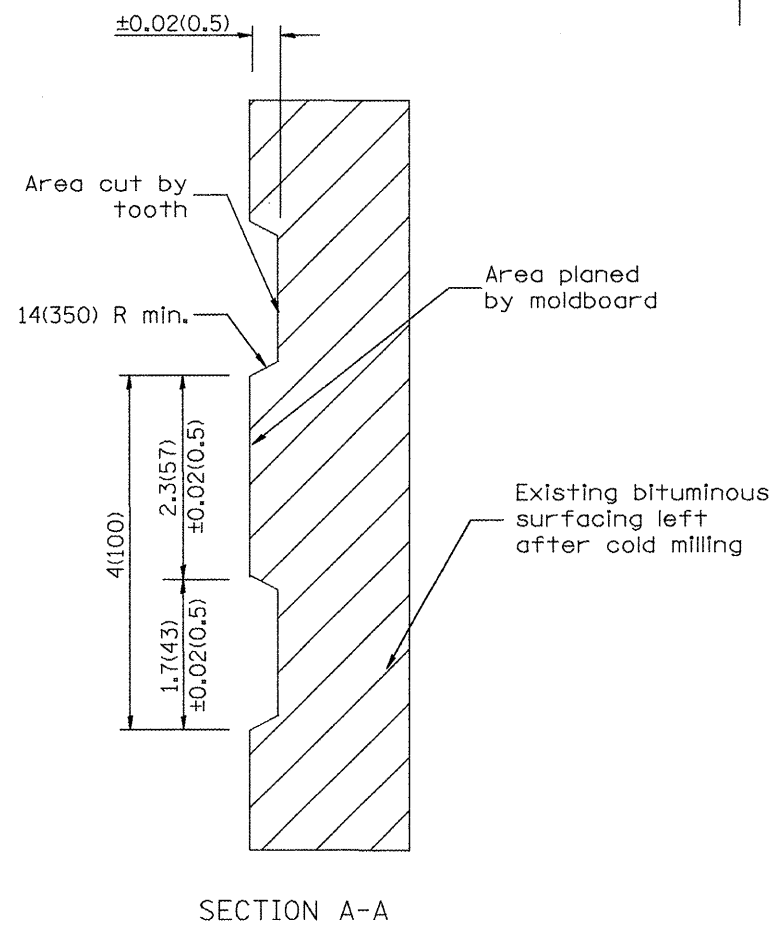
F.A.P. RTE.	SECTION	COUNTY	TOTAL SHEETS	SHEET NO.
22	48RS-2	PEORIA/KNOX	26	21
CONTRACT NO. 68633				
FED. ROAD DIST. NO.		ILLINOIS FED. AID PROJECT		

DESIGNER NOTES:  
1. INCLUDE DISTRICT SPECIAL PROVISION, IF APPLICABLE.



General notes:

1. Coldmilling shall consist of two processes: Cutting with carbide teeth mounted on a rotating drum, and planing with a moldboard mounted immediately behind the cutting drum.
2. Other similar patterns will be acceptable if they consist of a smooth, flat, planed surface interspersed with a pattern of discontinuous longitudinal striations.



All dimensions are in inches (millimeters) unless otherwise noted.

01-01-97	RENUM. C-104.01, NEW REVISION BOX	T.P.
04-20-98	REMOVED MILLING DETAIL FROM STANDARD	J.A.
09-08-98	CORRECT NOTE LEADER PLACEMENT	R.W.
10-16-06	REVISED TO 2007 SPEC.	M.A.

STATE OF ILLINOIS  
DEPARTMENT OF TRANSPORTATION

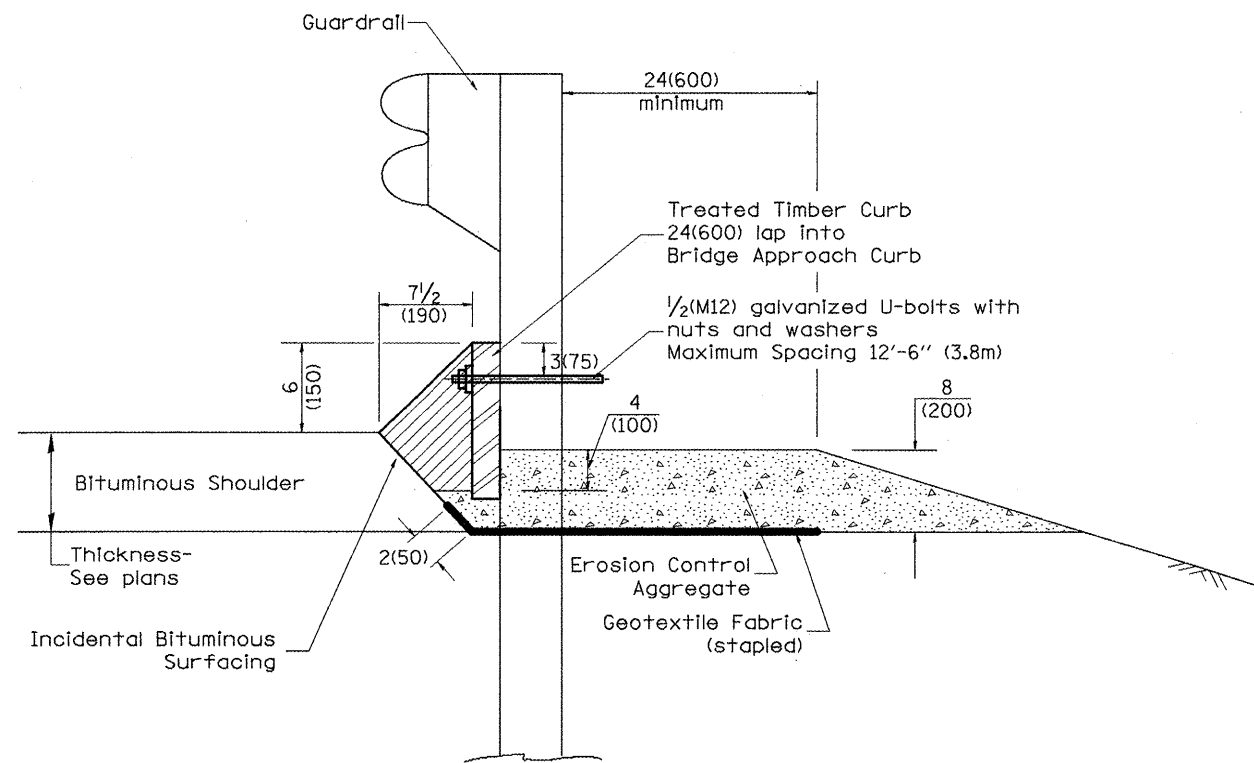
HOT MIX ASPHALT SURFACE REMOVAL (COLD MILLING)

NOT TO SCALE

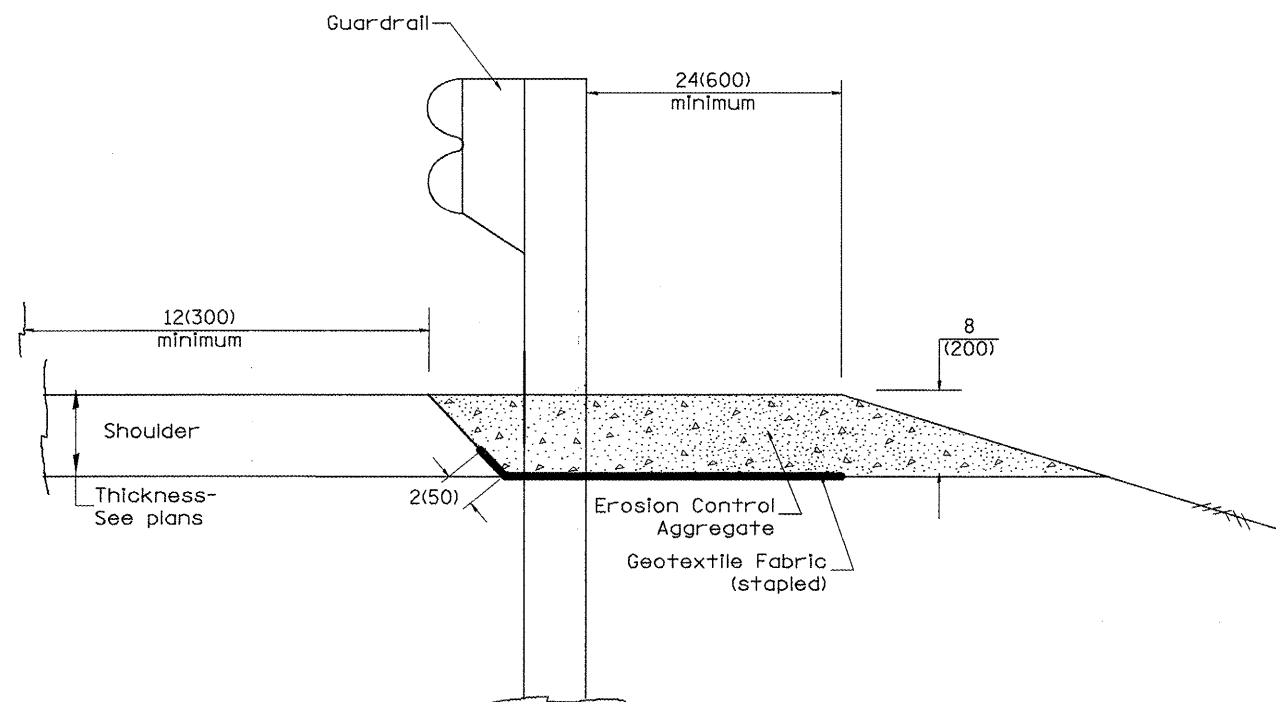
CADD STD. 440001-D4

F.A.P. RTE.	SECTION	COUNTY	TOTAL SHEETS	SHEET NO.
22	48RS-2	PEORIA/KNOX	26	22
FED. ROAD DIST. NO. [ILLINOIS] FED. AID PROJECT			CONTRACT NO. 68633	





**TYPICAL SECTION WITH EROSION CONTROL CURB**



**TYPICAL SECTION WITHOUT EROSION CONTROL CURB**

**GENERAL NOTES: EROSION CONTROL CURB**

1. This work shall consist of grading as needed, installing hardware and treated timber boards, furnishing and placing mastic material and incidental bituminous surfacing in front of Steel Plate Beam Guardrail in accordance with Plan Details.
2. Timber shall be treated in accordance with Article 1007.12. All preservatives specified in the article will be allowed. Waterborne preservatives "asa" and "cca" shall have a minimum retention of 0.40 lbs./cu. ft. (6.4 kg/m<sup>3</sup>)

**GENERAL NOTES: GUARDRAIL AGGREGATE EROSION CONTROL**

1. This work shall consist of grading as needed, furnishing and installing geotextile fabric and staples, and furnishing, placing and shaping crushed aggregate around and behind Steel Plate Beam Guardrail posts in accordance with Plan Details.
2. Before placing the aggregate and the Geotextile Fabric, weeds and grass shall be removed from the area to be covered.
3. After the area has been prepared, and in a dry condition, the Geotextile fabric shall be placed with a 12(300) minimum overlap. A knife cut for guardrail post installation is necessary.
4. The aggregate shall be deposited, compacted and shaped by either mechanical or hand methods, in a manner reasonably true to line and grade.
5. The Contractor shall have the option of placing the guardrail before or after the Geotextile Fabric and Aggregate are in place. If the guardrail is placed after the Geotextile Fabric and Aggregate, then any voids must be filled and the aggregate returned to line and grade.
6. Materials shall meet the following requirements:
  - A. The crushed aggregate shall be CA1 gradation in accordance with Article 1004.01(c) of the Standard Specifications.
  - B. The Geotextile Fabric shall be nonwoven fabric in accordance with Article 1080.02 of the Standard Specifications.

All dimensions are in inches (millimeters) unless otherwise noted.

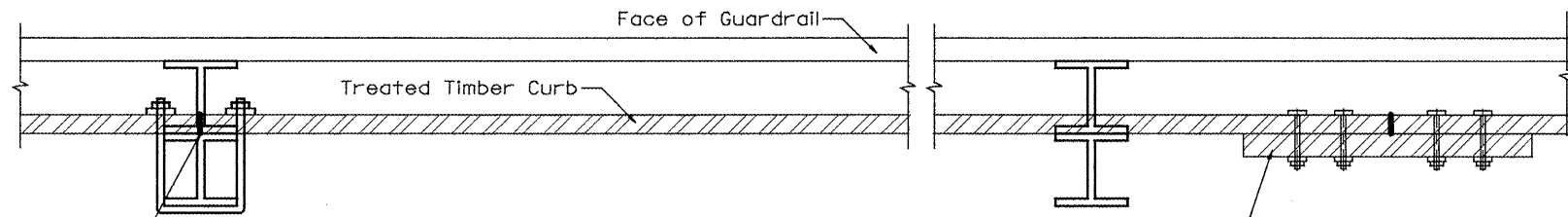
01-01-97	RENUM. C-22.01, NEW REVISION BOX	T.P.											
03-01-97	CORRECT STD. NUMBERS IN NOTES PG. 2	J.A.											
11-03-00	CORRECTION TO NOTES	M.A.											
10-16-06	REVISED TO 2007 SPEC.	M.A.											

**STATE OF ILLINOIS**  
**DEPARTMENT OF TRANSPORTATION**

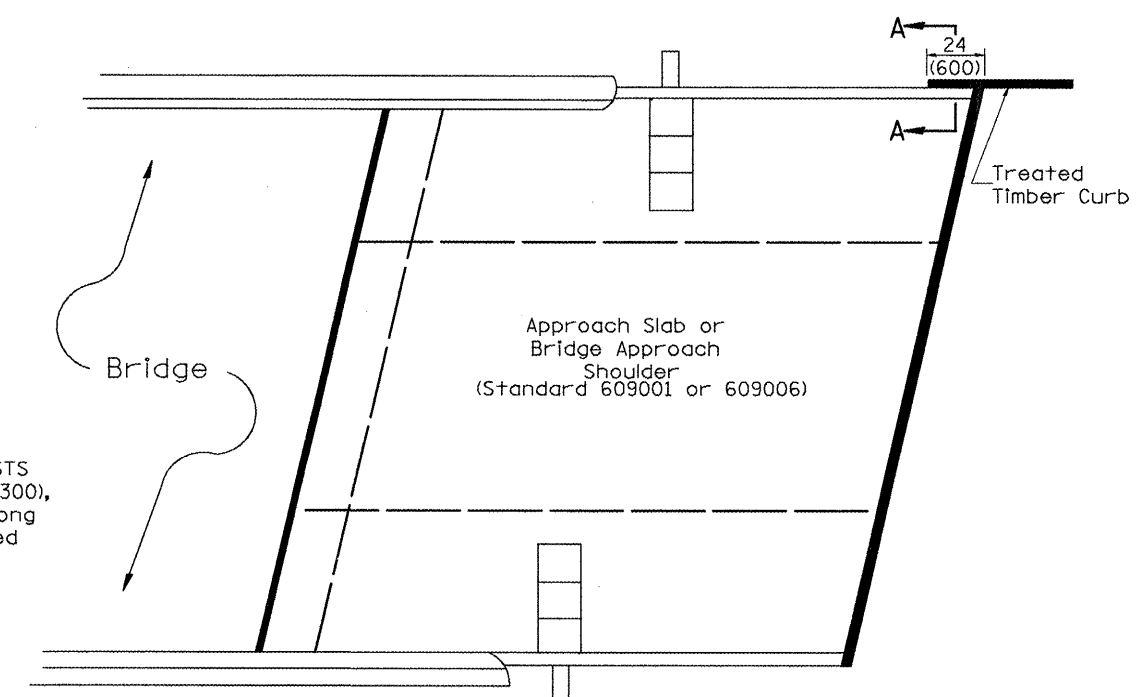
**GUARDRAIL EROSION CONTROL TREATMENTS**

SHT. 1 OF 2  
CADD STD. 630101-D4

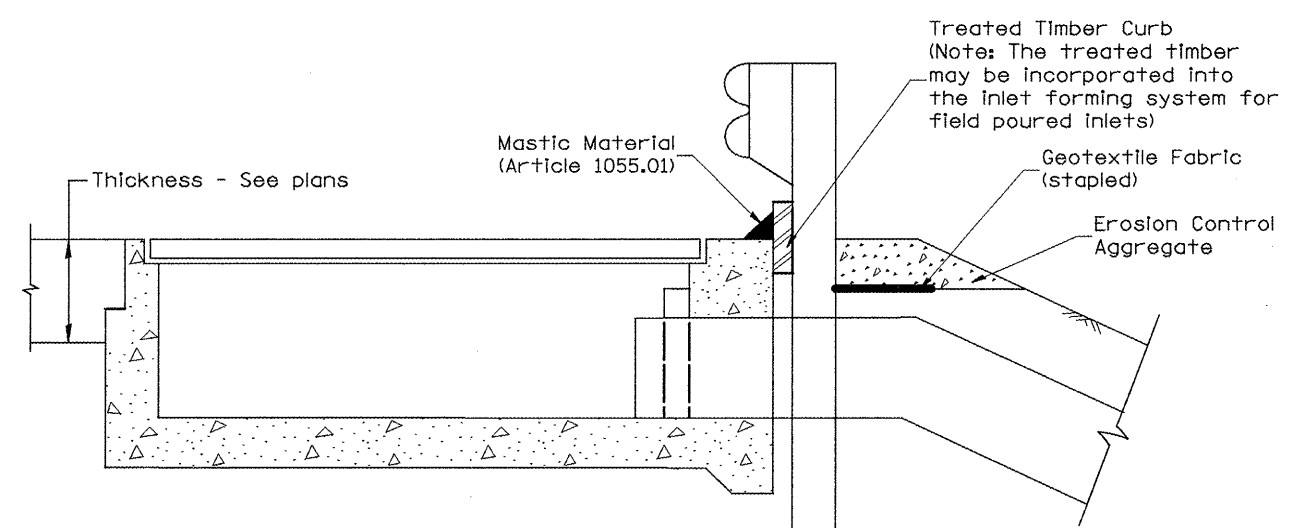
F.A.P. RTE.	SECTION	COUNTY	TOTAL SHEETS	SHEET NO.
22	4BRS-2	PEORIA/KNOX	26	23
FED. ROAD DIST. NO. ILLINOIS FED. AID PROJECT			CONTRACT NO. 68633	



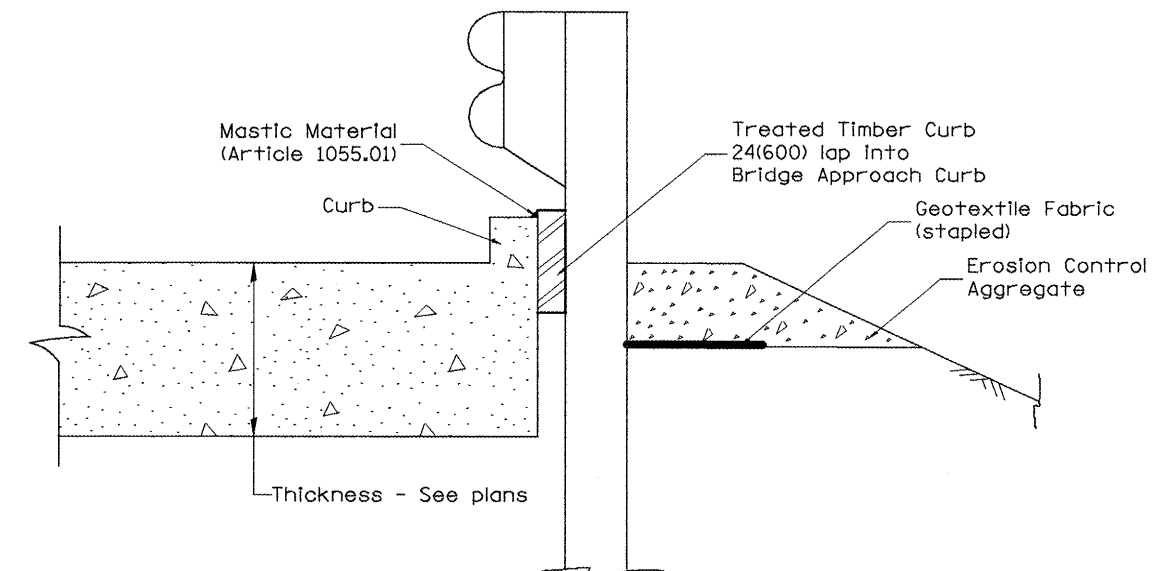
**DETAIL A**  
(Typical Treated Timber Splices)



**PLAN VIEW**  
**APPROACH SLAB OR BRIDGE APPROACH SHOULDER**  
(STANDARD 609001 or 609006)



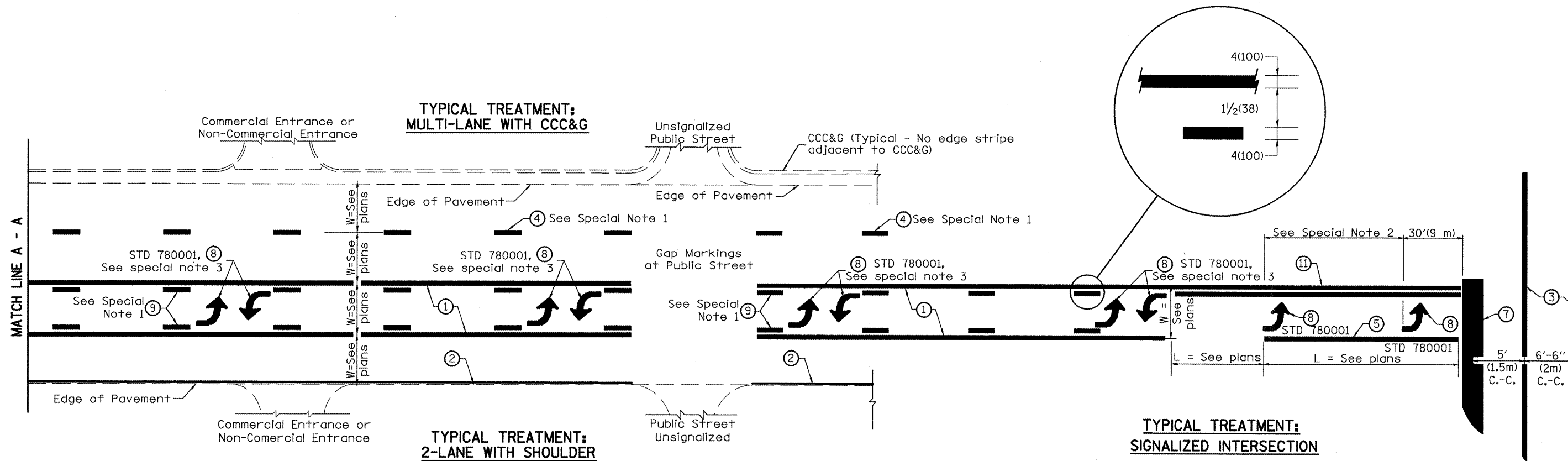
**TYPICAL SECTION WITH EROSION CONTROL CURB**  
**AT INLETS TYPE E & F (STANDARD 610001)**



**SECTION A-A**  
**TYPICAL SECTION WITH EROSION CONTROL CURB**  
**AT BRIDGE APPROACH CURB**  
(STANDARD 609001 OR 609006)

All dimensions are in inches (millimeters) unless otherwise noted.

STATE OF ILLINOIS DEPARTMENT OF TRANSPORTATION				GUARDRAIL EROSION CONTROL TREATMENTS				F.A.P. RTE.	SECTION	COUNTY	TOTAL SHEETS	SHEET NO.
								22	48RS-2	PEORIA/KNOX	26	24
NOT TO SCALE				SHT. 2 OF 2 CADD STD. 630101-D4				CONTRACT NO. 68633				
								FED. ROAD DIST. NO. ILLINOIS FED. AID PROJECT				



**FLUSH PAVED MEDIAN: TWO-WAY LEFT TURN LANE  
WITH ONE-WAY LEFT TURN LANE AT SIGNALIZED INTERSECTION**

**TYPICAL PAVEMENT MARKING LEGEND**

(Note: This is a District Standard Legend. Some elements may not apply to specific project.)

- ① 4(100) Solid (Yellow)
- ② 4(100) Solid (White)
- ③ 2-6(150) Crosswalk @ 6'-6" (2m)min C.-C. (White)  
2-8(200) Crosswalk @ 6'-6" (2m)min C.-C. (White) (When traffic signals are present.)
- ④ 6(150) Skip-Dash (White) (See Special Note 1)
- ⑤ 8(200) Solid (White)
- ⑥ 12(300) Diagonal (White) (Item ⑥ is shown on Std. 780001)
- ⑦ 24(600) Stop Bar (White)
- ⑧ Letters & Arrows (See Std. 780001 and Special Notes 2 & 3)
- ⑨ 4(100) Skip-Dash (Yellow) (See Special Note 1)
- ⑩ 12(300) Diagonal (Yellow) (See Table A) ⑩
- ⑪ 4(100) Double Solid (Yellow) ⑪

**SPECIAL NOTES**

1. Skip-Dash markings will be centered between both ends of city blocks and shall be placed in alignment transversely across the pavement.
2. The following shall apply to arrows located in one-way left turn lanes:
  - A. A minimum of two (2) arrows is required.
  - B. The maximum spacing between arrows is 80' (24 m).
  - C. Arrows shall be evenly spaced if three (3) or more are required.
3. The following shall apply to arrow pairs located in two-way left turn lanes:
  - A. A minimum of two (2) arrow pairs is required.
  - B. The maximum spacing between arrow pairs is 200' (61 m).
  - C. Arrow pairs shall be evenly spaced if three (3) or more are required.
  - D. The spacing between Bi Directional Left Turn Arrows is 33' (10 m).

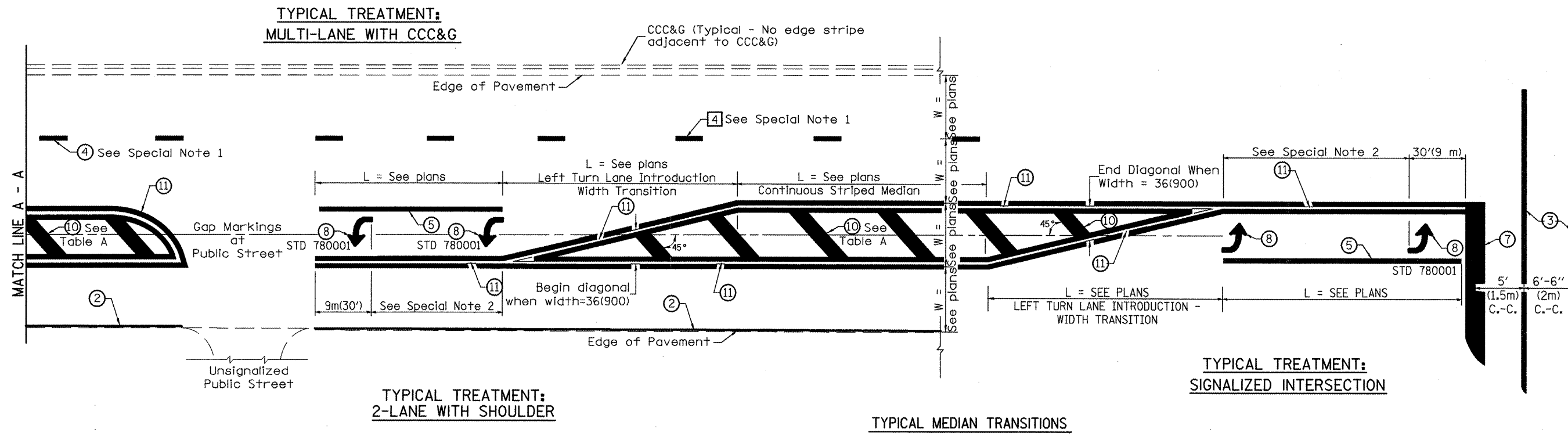
**GENERAL NOTES**

1. Refer to State Standard 780001 for additional Pavement Markings including letters & arrows.
2. See Plans for Pavement Markings adjacent to curbed islands and medians, and through lane reductions.

01-01-97	RENUM. F-8.03, NEW REVISION BOX	T.P.	10-16-06	REVISED TO 2007 SPEC.					
02-07-97	ADD BI DIRECTIONAL DIMENSION	J.A.							
10-97	CORRECT BI DIRECTIONAL DIMENSION	J.A.							
08-02	ADD CROSSWALK DIMS. WITH T.S.	M.A.							

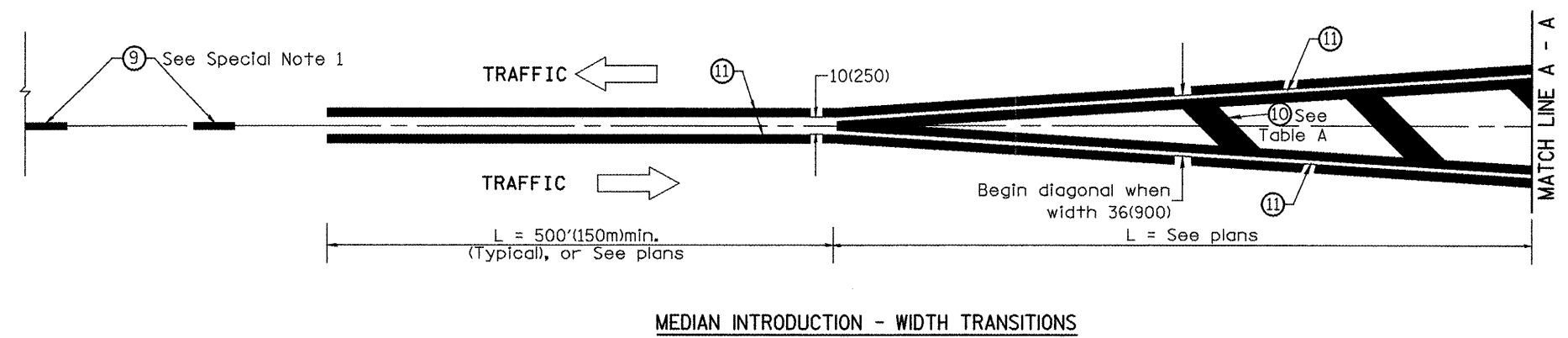
<b>STATE OF ILLINOIS DEPARTMENT OF TRANSPORTATION</b>		<b>TYPICAL PAVEMENT MARKINGS</b>	
NOT TO SCALE		SHT. 1 OF 2 CADD STD. 780001-D4	
F.A.P. RTE.	SECTION	COUNTY	TOTAL SHEETS
22	48RS-2	PEORIA/KNOX	26
		CONTRACT NO. 68633	
FED. ROAD DIST. NO.		ILLINOIS FED. AID PROJECT	



**FLUSH PAVED MEDIAN: RESTRICTED LEFT TURN LANE**

**TABLE A**  
RECOMMENDED SPACING BETWEEN DIAGONAL LINES

SPEED LIMIT RANGE	INTERSECTION CHANNELIZATION (Includes Width Transitions for Median and Left Turn Lane Introductions)	
	CONTINUOUS	
Less Than 30 mph (50 km/h)	50' (15m)	15' (5m)
30 - 45 mph (50 - 70 km/h)	75' (23m)	20' (6m)
Over 45 mph (70 km/h)	150' (46m)	30' (9m)



All dimensions are in Inches (millimeters) unless otherwise noted.

STATE OF ILLINOIS  
DEPARTMENT OF TRANSPORTATION

TYPICAL PAVEMENT MARKINGS

NOT TO SCALE

SHT. 2 OF 2  
CADD STD. 780001-D4

F.A.P. RTE.	SECTION	COUNTY	TOTAL SHEETS	SHEET NO.
22	48RS-2	PEORIA/KNOX	26	26
CONTRACT NO. 68633				
FED. ROAD DIST. NO.		ILLINOIS FED. AID PROJECT		