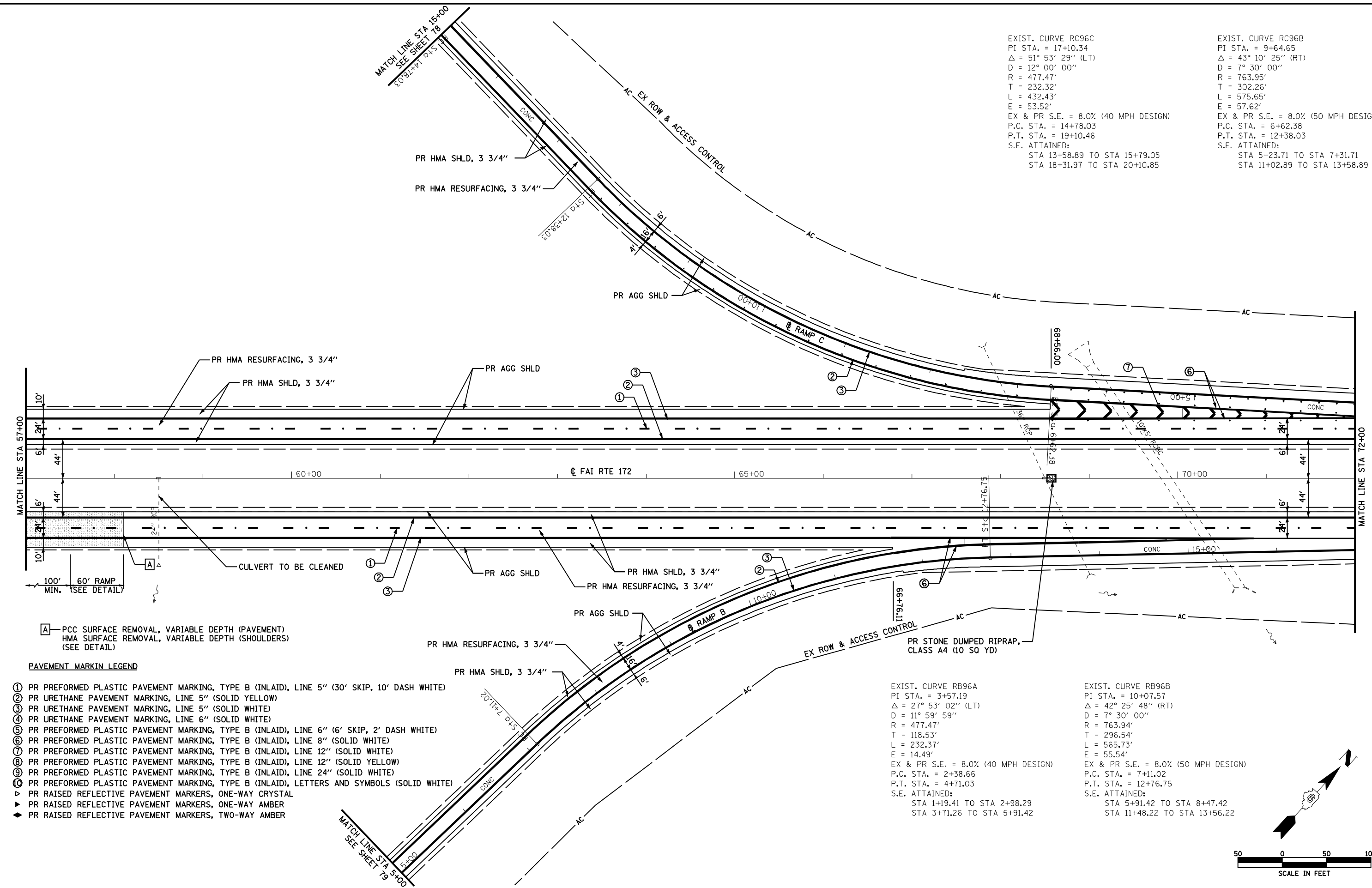


EXIST. CURVE RC96C
 PI STA. = 17+10.34
 $\Delta = 51^\circ 53' 29''$ (LT)
 D = 12° 00' 00"
 R = 477.47'
 T = 232.32'
 L = 432.43'
 E = 53.52'
 EX & PR S.E. = 8.0% (40 MPH DESIGN)
 P.C. STA. = 14+78.03
 P.T. STA. = 19+10.46
 S.E. ATTAINED:
 STA 13+58.89 TO STA 15+79.05
 STA 18+31.97 TO STA 20+10.85

EXIST. CURVE RC96B
 PI STA. = 9+64.65
 $\Delta = 43^\circ 10' 25''$ (RT)
 D = 7° 30' 00"
 R = 763.95'
 T = 302.26'
 L = 575.65'
 E = 57.62'
 EX & PR S.E. = 8.0% (50 MPH DESIGN)
 P.C. STA. = 6+62.38
 P.T. STA. = 12+38.03
 S.E. ATTAINED:
 STA 5+23.71 TO STA 7+31.71
 STA 11+02.89 TO STA 13+58.89



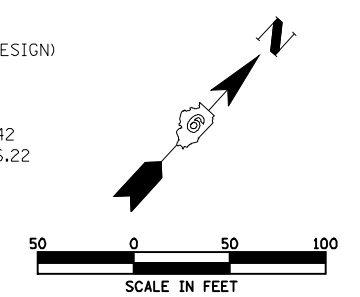
A — PCC SURFACE REMOVAL, VARIABLE DEPTH (PAVEMENT)
 HMA SURFACE REMOVAL, VARIABLE DEPTH (SHOULDERS)
 (SEE DETAIL)

PAVEMENT MARKIN LEGEND

- ① PR PREFORMED PLASTIC PAVEMENT MARKING, TYPE B (INLAID), LINE 5" (30' SKIP, 10' DASH WHITE)
- ② PR URETHANE PAVEMENT MARKING, LINE 5" (SOLID YELLOW)
- ③ PR URETHANE PAVEMENT MARKING, LINE 5" (SOLID WHITE)
- ④ PR URETHANE PAVEMENT MARKING, LINE 6" (SOLID WHITE)
- ⑤ PR PREFORMED PLASTIC PAVEMENT MARKING, TYPE B (INLAID), LINE 6" (6' SKIP, 2' DASH WHITE)
- ⑥ PR PREFORMED PLASTIC PAVEMENT MARKING, TYPE B (INLAID), LINE 8" (SOLID WHITE)
- ⑦ PR PREFORMED PLASTIC PAVEMENT MARKING, TYPE B (INLAID), LINE 12" (SOLID WHITE)
- ⑧ PR PREFORMED PLASTIC PAVEMENT MARKING, TYPE B (INLAID), LINE 12" (SOLID YELLOW)
- ⑨ PR PREFORMED PLASTIC PAVEMENT MARKING, TYPE B (INLAID), LINE 24" (SOLID WHITE)
- ⑩ PR PREFORMED PLASTIC PAVEMENT MARKING, TYPE B (INLAID), LETTERS AND SYMBOLS (SOLID WHITE)
- ▷ PR RAISED REFLECTIVE PAVEMENT MARKERS, ONE-WAY CRYSTAL
- ▶ PR RAISED REFLECTIVE PAVEMENT MARKERS, ONE-WAY AMBER
- ◆ PR RAISED REFLECTIVE PAVEMENT MARKERS, TWO-WAY AMBER

EXIST. CURVE RB96A
 PI STA. = 3+57.19
 $\Delta = 27^\circ 53' 02''$ (LT)
 D = 11° 59' 59"
 R = 477.47'
 T = 118.53'
 L = 232.37'
 E = 14.49'
 EX & PR S.E. = 8.0% (40 MPH DESIGN)
 P.C. STA. = 2+38.66
 P.T. STA. = 4+71.03
 S.E. ATTAINED:
 STA 1+19.41 TO STA 2+98.29
 STA 3+71.26 TO STA 5+91.42

EXIST. CURVE RB96B
 PI STA. = 10+07.57
 $\Delta = 42^\circ 25' 48''$ (RT)
 D = 7° 30' 00"
 R = 763.94'
 T = 296.54'
 L = 565.73'
 E = 55.54'
 EX & PR S.E. = 8.0% (50 MPH DESIGN)
 P.C. STA. = 7+11.02
 P.T. STA. = 12+76.75
 S.E. ATTAINED:
 STA 5+91.42 TO STA 8+47.42
 STA 11+48.22 TO STA 13+56.22



FILE NAME =	USER NAME = laughlinr1	DESIGNED -	REVISED -	STATE OF ILLINOIS DEPARTMENT OF TRANSPORTATION	FAI RTE 172 PLAN			F.A.I. RTE.	SECTION	COUNTY	TOTAL SHEETS	SHEET NO.
es:\pwwork\pwwid001\LAUGHLINRL\0182983\074_Plan.dgn		DRAWN -	REVISED -		172	1-(1,2,3,4,5)RS	ADAMS	165	74	CONTRACT NO. 72A09		
		CHECKED -	REVISED -		SCALE: 1"=50'			FED. ROAD DIST. NO.	ILLINOIS FED. AID PROJECT			
		DATE -	REVISED -		SHEET NO. 36 OF 52 SHEETS			STA. 57+00 TO STA. T2+00				