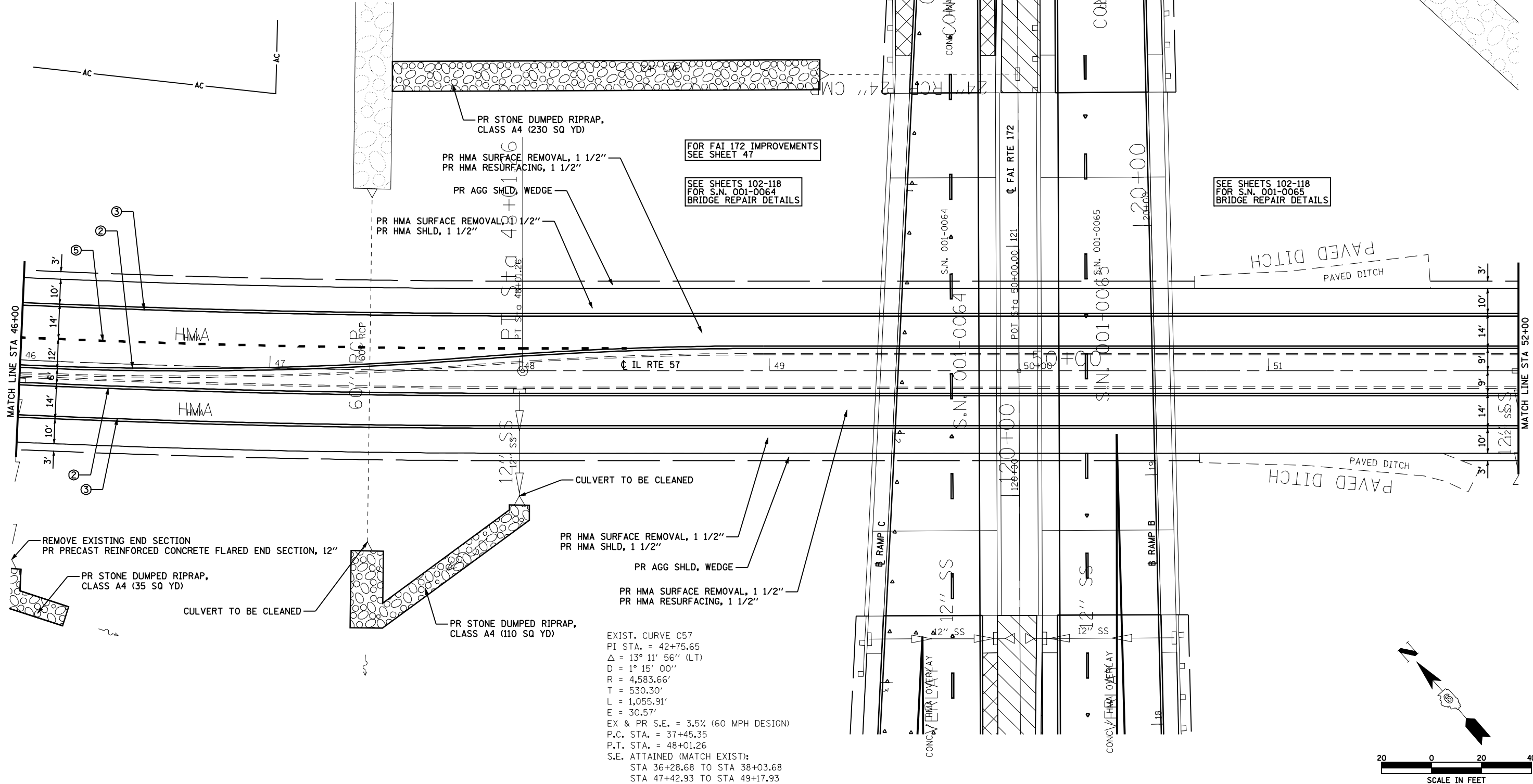
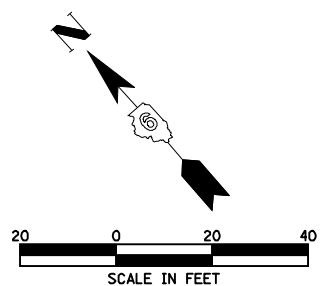


PAVEMENT MARKIN LEGEND

- ① PR PREFORMED PLASTIC PAVEMENT MARKING, TYPE B (INLAID), LINE 5" (30' SKIP, 10' DASH WHITE)
- ② PR URETHANE PAVEMENT MARKING, LINE 5" (SOLID YELLOW)
- ③ PR URETHANE PAVEMENT MARKING, LINE 5" (SOLID WHITE)
- ④ PR URETHANE PAVEMENT MARKING, LINE 6" (SOLID WHITE)
- ⑤ PR PREFORMED PLASTIC PAVEMENT MARKING, TYPE B (INLAID), LINE 6" (6' SKIP, 2' DASH WHITE)
- ⑥ PR PREFORMED PLASTIC PAVEMENT MARKING, TYPE B (INLAID), LINE 8" (SOLID WHITE)
- ⑦ PR PREFORMED PLASTIC PAVEMENT MARKING, TYPE B (INLAID), LINE 12" (SOLID WHITE)
- ⑧ PR PREFORMED PLASTIC PAVEMENT MARKING, TYPE B (INLAID), LINE 12" (SOLID YELLOW)
- ⑨ PR PREFORMED PLASTIC PAVEMENT MARKING, TYPE B (INLAID), LINE 24" (SOLID WHITE)
- ⑩ PR PREFORMED PLASTIC PAVEMENT MARKING, TYPE B (INLAID), LETTERS AND SYMBOLS (SOLID WHITE)
- ▽ PR RAISED REFLECTIVE PAVEMENT MARKERS, ONE-WAY CRYSTAL
- ▲ PR RAISED REFLECTIVE PAVEMENT MARKERS, ONE-WAY AMBER
- ◆ PR RAISED REFLECTIVE PAVEMENT MARKERS, TWO-WAY AMBER



EXIST. CURVE C57
 PI STA. = 42+75.65
 $\Delta = 13^\circ 11' 56''$ (LT)
 $D = 1^\circ 15' 00''$
 $R = 4,583.66'$
 $T = 530.30'$
 $L = 1,055.91'$
 $E = 30.57'$
 EX & PR S.E. = 3.5% (60 MPH DESIGN)
 P.C. STA. = 37+45.35
 P.T. STA. = 48+01.26
 S.E. ATTAINED (MATCH EXIST):
 STA 36+28.68 TO STA 38+03.68
 STA 47+42.93 TO STA 49+17.93



FILE NAME =	USER NAME = laughlinr1	DESIGNED -	REVISED -
es:\pwwork\pwwid01\LAUGHLINRL\0182983\083_Plan_IL_57.dgn		DRAWN -	REVISED -
PLOT SCALE = 48.0000' / IN.		CHECKED -	REVISED -
PLOT DATE = Feb-01-2010 09:36:59AM		DATE -	REVISED -

**STATE OF ILLINOIS
 DEPARTMENT OF TRANSPORTATION**

IL RTE 57 PLAN

SCALE: 1"=20' SHEET NO. 45 OF 52 SHEETS STA. 46+00 TO STA. 52+00

F.A.I. RTE.	SECTION	COUNTY	TOTAL SHEETS	SHEET NO.
172	1-(1,2,3,4,5)RS	ADAMS	165	83
CONTRACT NO. 72A09				
FED. ROAD DIST. NO. ILLINOIS FED. AID PROJECT				