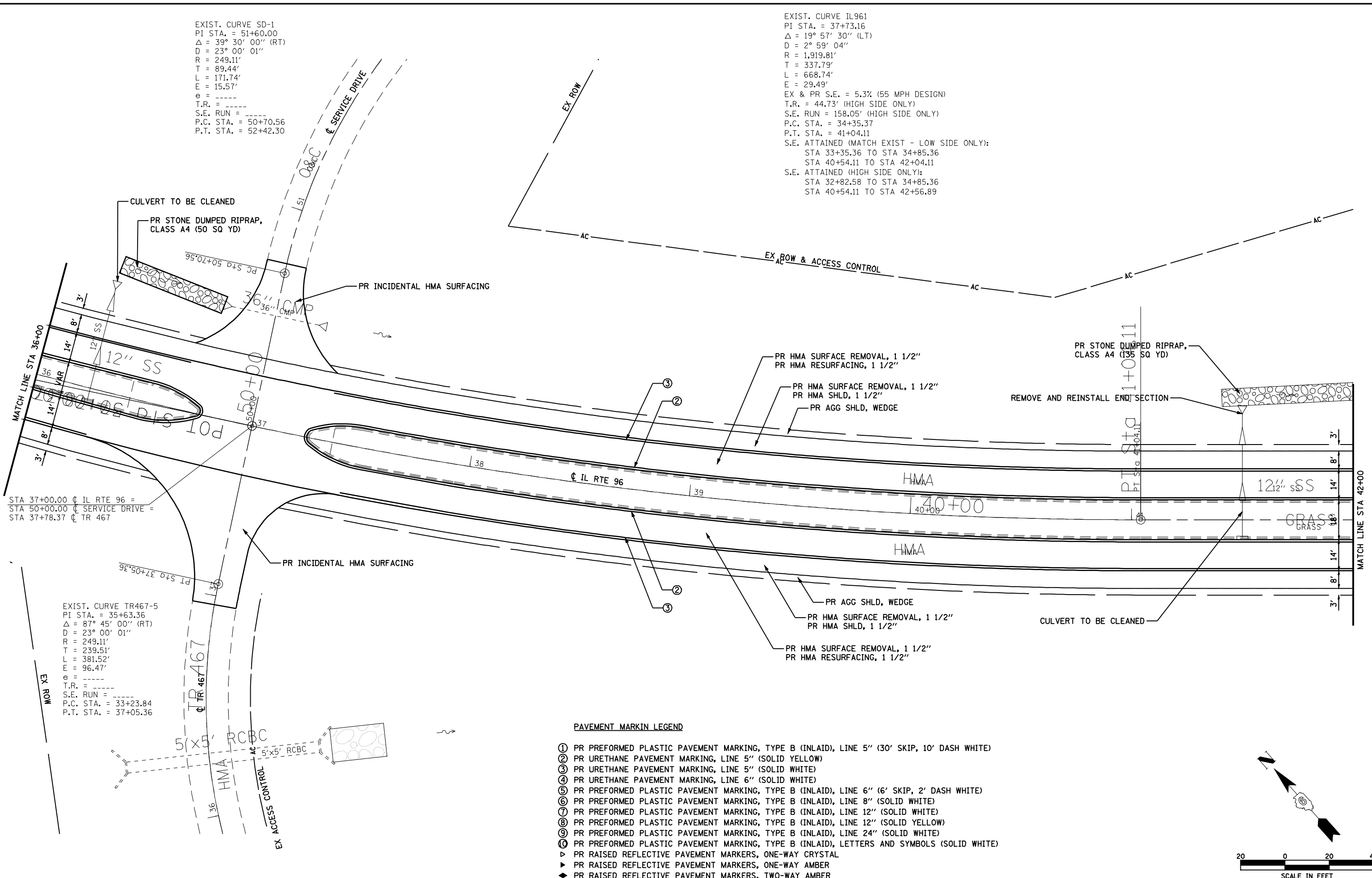


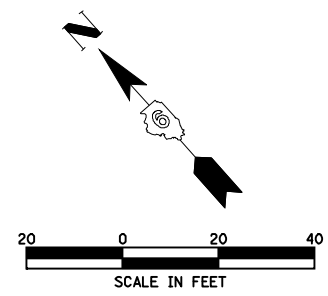
EXIST. CURVE SD-1
 PI STA. = 51+60.00
 $\Delta = 39^\circ 30' 00''$ (RT)
 $D = 23^\circ 00' 01''$
 $R = 249.11'$
 $T = 89.44'$
 $L = 171.74'$
 $E = 15.57'$
 $\theta =$ -----
 $T.R. =$ -----
 $S.E. RUN =$ -----
 $P.C. STA. = 50+70.56$
 $P.T. STA. = 52+42.30$

EXIST. CURVE IL961
 PI STA. = 37+73.16
 $\Delta = 19^\circ 57' 30''$ (LT)
 $D = 2^\circ 59' 04''$
 $R = 1,919.81'$
 $T = 337.79'$
 $L = 668.74'$
 $E = 29.49'$
 $EX \ \& \ PR \ S.E. = 5.3\%$ (55 MPH DESIGN)
 $T.R. = 44.73'$ (HIGH SIDE ONLY)
 $S.E. RUN = 158.05'$ (HIGH SIDE ONLY)
 $P.C. STA. = 34+35.37$
 $P.T. STA. = 41+04.11$
 $S.E. ATTAINED (MATCH EXIST - LOW SIDE ONLY):$
 STA 33+35.36 TO STA 34+85.36
 STA 40+54.11 TO STA 42+04.11
 $S.E. ATTAINED (HIGH SIDE ONLY):$
 STA 32+82.58 TO STA 34+85.36
 STA 40+54.11 TO STA 42+56.89



PAVEMENT MARKIN LEGEND

- ① PR PREFORMED PLASTIC PAVEMENT MARKING, TYPE B (INLAID), LINE 5" (30' SKIP, 10' DASH WHITE)
- ② PR URETHANE PAVEMENT MARKING, LINE 5" (SOLID YELLOW)
- ③ PR URETHANE PAVEMENT MARKING, LINE 5" (SOLID WHITE)
- ④ PR URETHANE PAVEMENT MARKING, LINE 6" (SOLID WHITE)
- ⑤ PR PREFORMED PLASTIC PAVEMENT MARKING, TYPE B (INLAID), LINE 6" (6' SKIP, 2' DASH WHITE)
- ⑥ PR PREFORMED PLASTIC PAVEMENT MARKING, TYPE B (INLAID), LINE 8" (SOLID WHITE)
- ⑦ PR PREFORMED PLASTIC PAVEMENT MARKING, TYPE B (INLAID), LINE 12" (SOLID WHITE)
- ⑧ PR PREFORMED PLASTIC PAVEMENT MARKING, TYPE B (INLAID), LINE 12" (SOLID YELLOW)
- ⑨ PR PREFORMED PLASTIC PAVEMENT MARKING, TYPE B (INLAID), LINE 24" (SOLID WHITE)
- ⑩ PR PREFORMED PLASTIC PAVEMENT MARKING, TYPE B (INLAID), LETTERS AND SYMBOLS (SOLID WHITE)
- ▷ PR RAISED REFLECTIVE PAVEMENT MARKERS, ONE-WAY CRYSTAL
- ◀ PR RAISED REFLECTIVE PAVEMENT MARKERS, ONE-WAY AMBER
- ◆ PR RAISED REFLECTIVE PAVEMENT MARKERS, TWO-WAY AMBER



FILE NAME =	USER NAME = laughlinr1	DESIGNED -	REVISED -	STATE OF ILLINOIS DEPARTMENT OF TRANSPORTATION	IL RTE 96 PLAN		F.A.I. RTE.	SECTION	COUNTY	TOTAL SHEETS	SHEET NO.
es:\pwork\PWIDOT\LAUGHLINRL\0182983\087_Plan_IL96.dgn		DRAWN -	REVISED -		172	1-(1,2,3,4,5)RS	ADAMS	165	87		
PLOT SCALE = 40.0000' / IN.		CHECKED -	REVISED -		CONTRACT NO. 72A09						
PLOT DATE = Feb-01-2010 09:37:09AM		DATE -	REVISED -		FED. ROAD DIST. NO.	ILLINOIS FED. AID PROJECT					