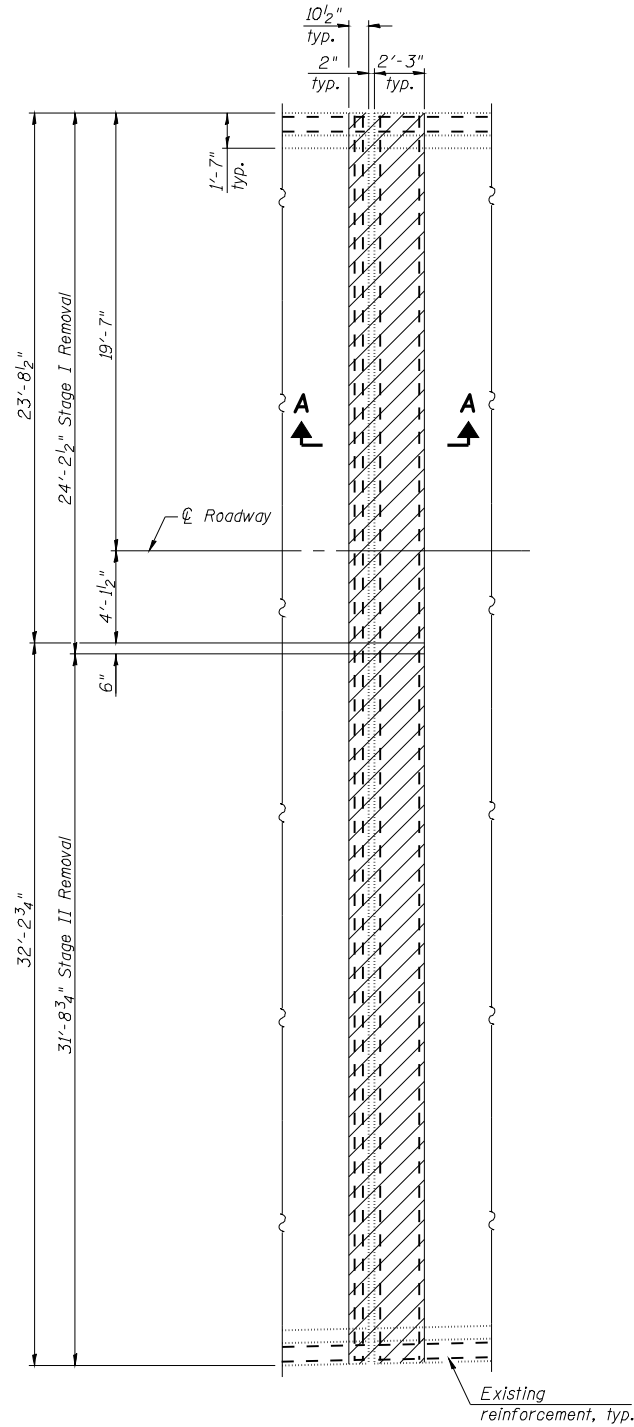
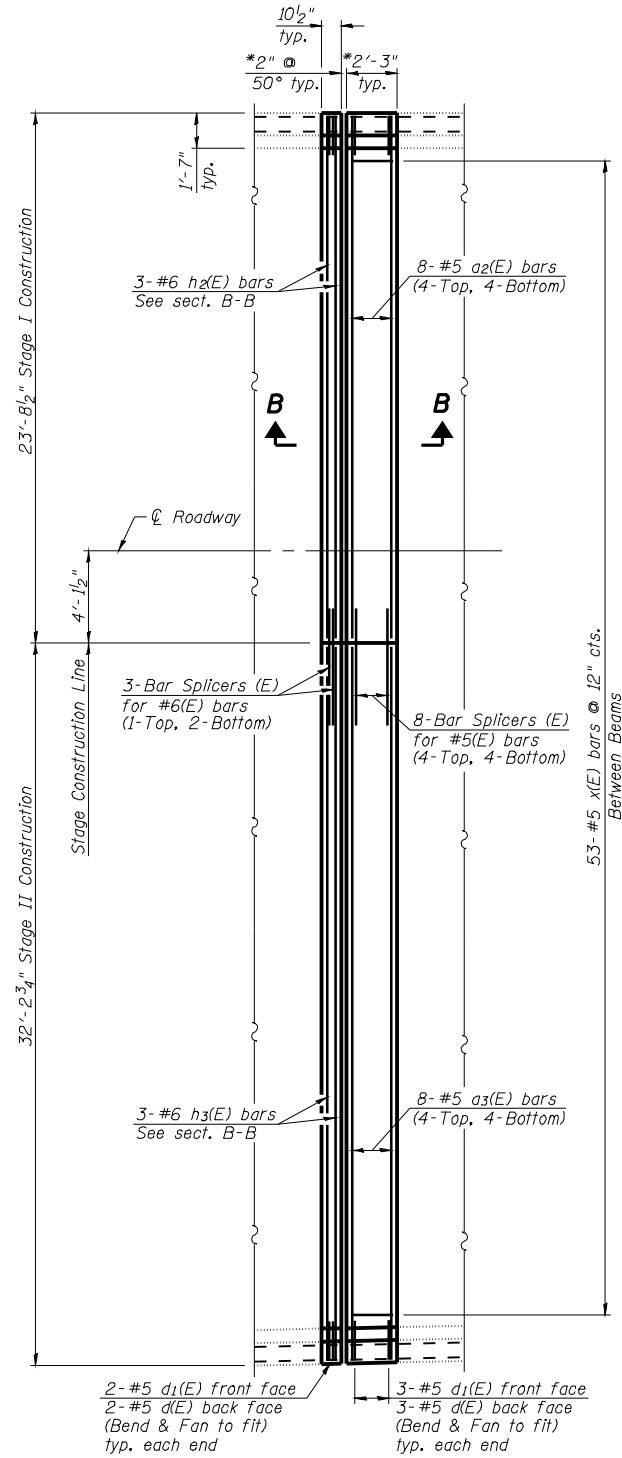


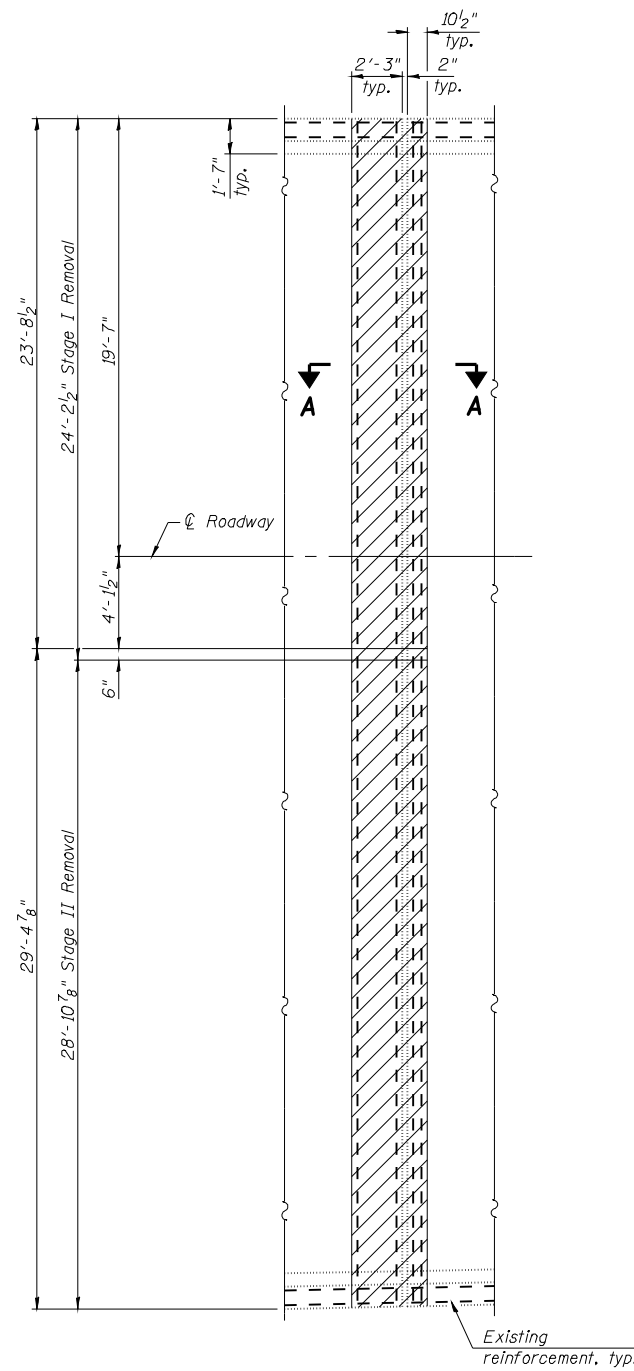
Notes:
 Hatched areas indicate concrete removal.
 For Sections A-A & B-B, bar details & Bill of Material see sheet No. 10 of 17.



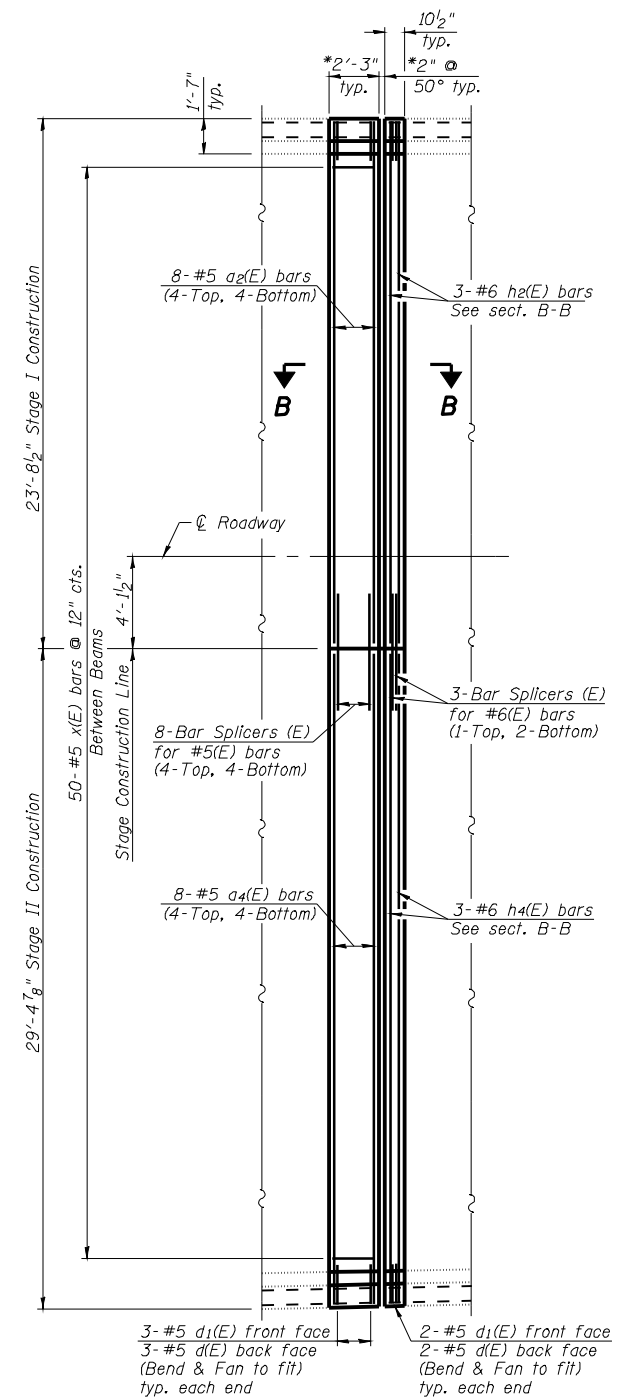
PARTIAL REMOVAL PLAN
 (West Abutment SN 001-0065)



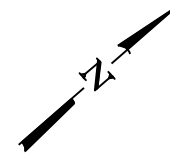
PARTIAL PROPOSED PLAN
 (West Abutment SN 001-0065)



PARTIAL REMOVAL PLAN
 (East Abutment SN 001-0065)



PARTIAL PROPOSED PLAN
 (East Abutment SN 001-0065)



SUPERSTRUCTURE DETAILS
FAI 172 OVER IL 57
SN 001-0064 & 0065

DESIGNED	KTH
CHECKED	ADL
DRAWN	KTH
CHECKED	ADL

KLINGNER & ASSOCIATES, P.C.
 Engineers - Architects - Surveyors
 150 N. 3rd Street, Quincy, IL 62450
 400 N. 3rd Street, Quincy, IL 62450
 100 N. 3rd Street, Quincy, IL 62450
 100 N. 3rd Street, Quincy, IL 62450
 STATE OF ILLINOIS DESIGN FIRM # 1842738

SHEET NO. 8	F.A. RTE.	SECTION	COUNTY	TOTAL SHEETS	SHEET NO.
	172	1-3HB	ADAMS	165	109
17 SHEETS					
CONTRACT NO. 72A09					
FED. ROAD DIST. NO.		ILLINOIS FED. AID PROJECT			