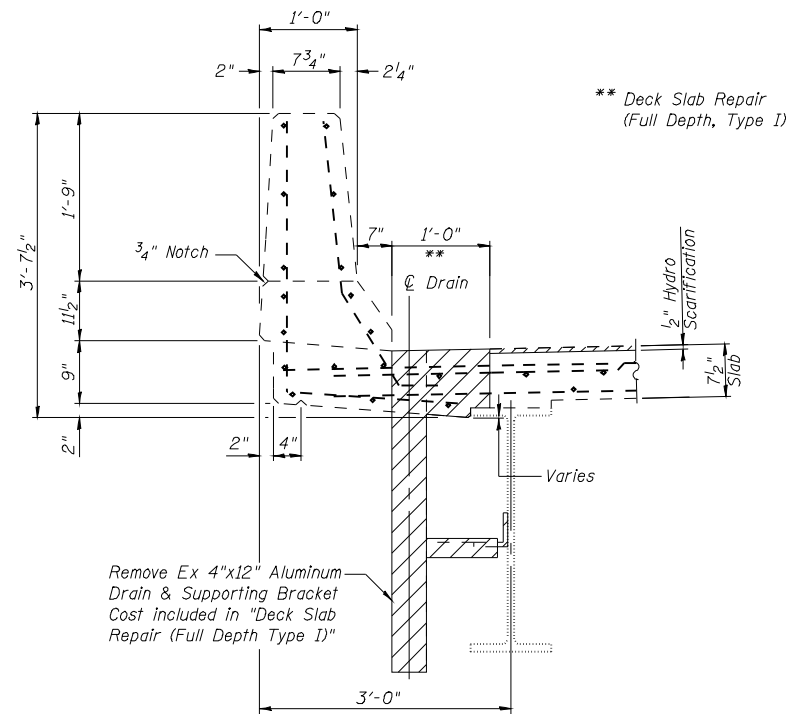
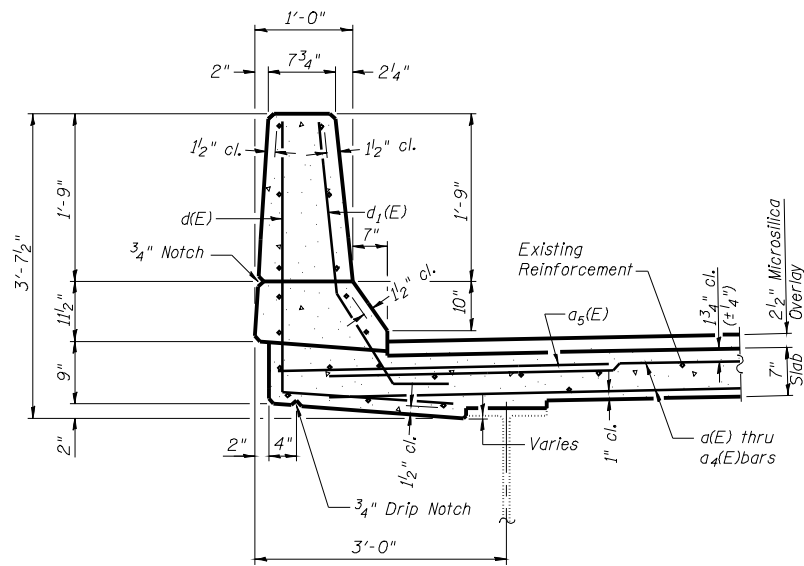


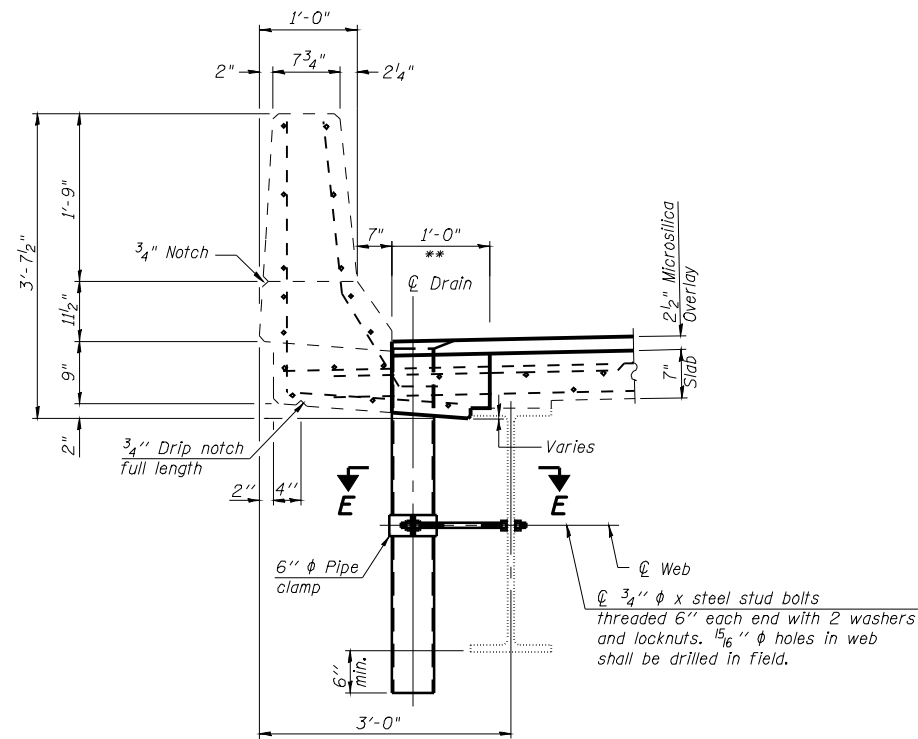
SECTION THRU EXISTING PARAPET



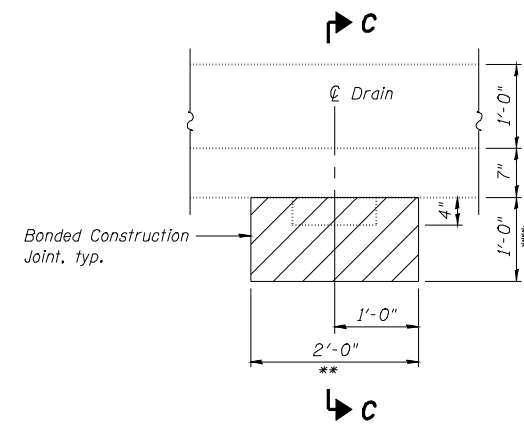
SECTION C-C



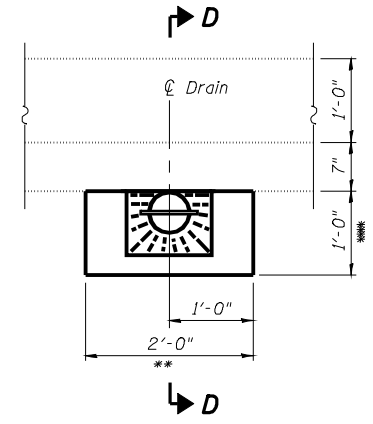
SECTION THRU PARAPET



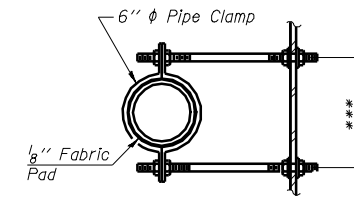
SECTION D-D



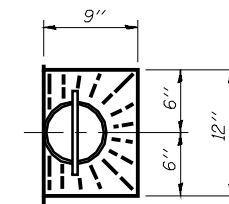
EXISTING DECK DRAIN REMOVAL



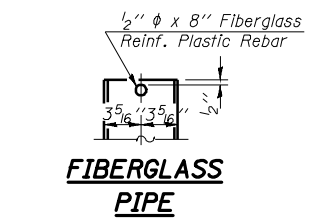
PROPOSED DECK DRAIN



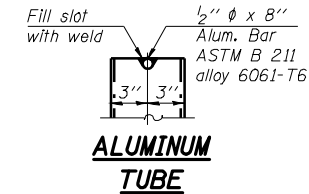
SECTION E-E
***Dimension as required by Pipe Clamp



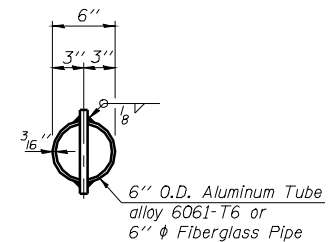
TOP PLAN



FIBERGLASS PIPE



ALUMINUM TUBE



TOP PLAN (Showing Aluminum Tube)

Note: Fiberglass pipe shall conform to ASTM D 2996, with short-time rupture strength hoop tensile stress of 30,000 p.s.i. minimum.

Notes: Hatched areas indicate concrete sections to be removed and replaced. Perimeters of concrete removal areas shall be saw cut 3/4" prior to the removal of concrete. Existing reinforcement bars shown are to be cleaned and incorporated into the new construction.

DESIGNED	KTH
CHECKED	ADL
DRAWN	KTH
CHECKED	ADL

KLINGNER & ASSOCIATES, P.C.
Engineers - Architects - Surveyors
1415 North 21st Street, Barrington, IL 60010
1415 North 21st Street, Suite 100, Barrington, IL 60010
1415 North 21st Street, Suite 100, Barrington, IL 60010
1415 North 21st Street, Suite 100, Barrington, IL 60010
STATE OF ILLINOIS DESIGN FIRM # 1842738

SUPERSTRUCTURE DETAILS
FAI 172 OVER IL 57
SN 001-0064 & 0065

SHEET NO. 9 17 SHEETS	F.A. RTE.	SECTION	COUNTY	TOTAL SHEETS	SHEET NO.
	172	1-3HB	ADAMS	165	110
FED. ROAD DIST. NO.			ILLINOIS FED. AID PROJECT		
CONTRACT NO. 72A09					