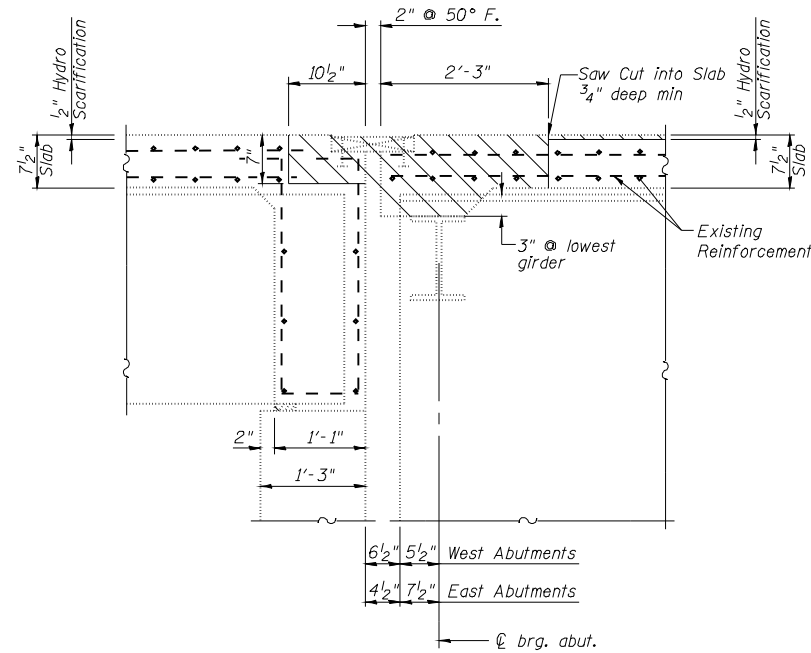


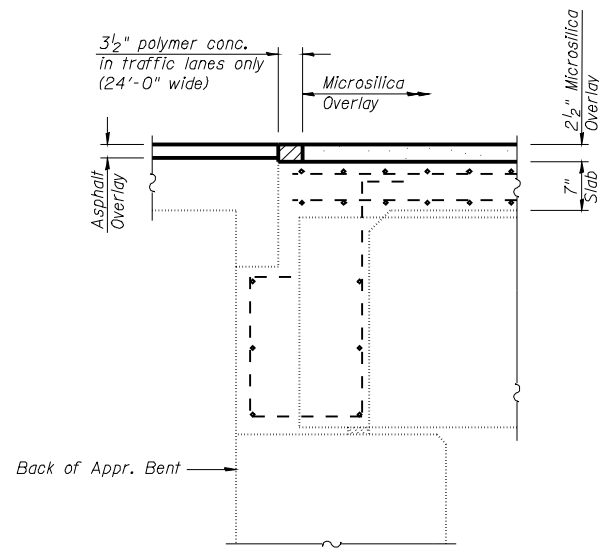
Notes:
 Hatched areas indicate concrete sections to be removed and replaced. Perimeters of concrete removal areas shall be saw cut $\frac{3}{4}$ " prior to the removal of concrete.
 Existing reinforcement bars shown are to be cleaned and incorporated into the new construction.



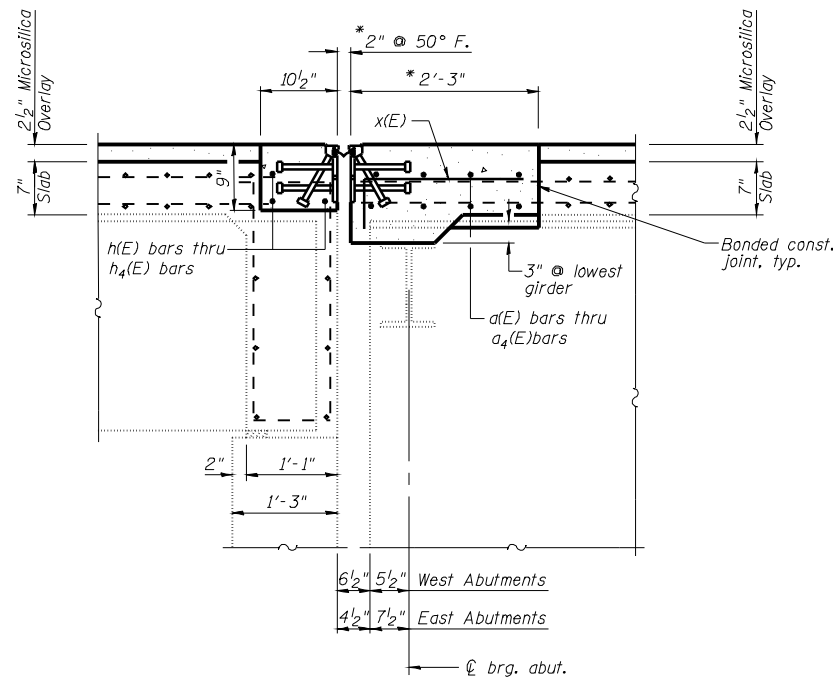
SECTION A-A

BILL OF MATERIAL

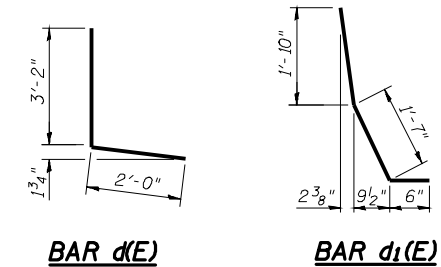
| Bar | No. | Size | Length | Shape |
|----------------------------------|-----|----------|--------|-------|
| a(E) | 16 | #5 | 20'-6" | — |
| a ₁ (E) | 8 | #5 | 30'-6" | — |
| a ₂ (E) | 24 | #5 | 22'-9" | — |
| a ₃ (E) | 8 | #5 | 31'-3" | — |
| a ₄ (E) | 8 | #5 | 28'-6" | — |
| a ₅ (E) | 32 | #5 | 4'-0" | — |
| d(E) | 40 | #5 | 5'-2" | ┌ |
| d ₁ (E) | 40 | #5 | 3'-11" | └ |
| h(E) | 6 | #6 | 20'-6" | — |
| h ₁ (E) | 3 | #6 | 30'-6" | — |
| h ₂ (E) | 9 | #6 | 22'-9" | — |
| h ₃ (E) | 3 | #6 | 31'-3" | — |
| h ₄ (E) | 3 | #6 | 28'-6" | — |
| x(E) | 195 | #5 | 2'-8" | ┌ |
| Reinforcement Bars, Epoxy Coated | | Pound | 3620 | |
| Bar Splicers | | Each | 44 | |
| Concrete Superstructure | | Cu. Yds. | 23.9 | |



SECTION AT APPROACH BENT

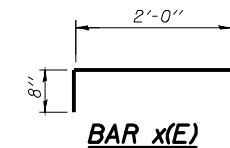


SECTION B-B



BAR d(E)

BAR d₁(E)



BAR x(E)

* Dimensions are based on a Rolled Rail Strip Seal Joint. If the Contractor elects to use the Welded Rail Strip Seal Joint, deck dimensions may require adjustments to satisfy the details on Sheet No. 11 of 17.

SUPERSTRUCTURE DETAILS
FAI 172 OVER IL 57
SN 001-0064 & 0065

| | |
|----------|-----|
| DESIGNED | KTH |
| CHECKED | ADL |
| DRAWN | KTH |
| CHECKED | ADL |

KLINGNER & ASSOCIATES, P.C.
 Engineers - Architects - Surveyors
 115 North 21st Street, Barrington, IL
 4300 Paces Green, Hunt, Maryland, MD
 400 N. 4th Street, Suite 100, Burlington, IL
 1110 W. Prairie Street, Galesburg, IL
 Internet Address: www.klingner.com
 Ph: (815) 223-3570 - Fax: (815) 223-3883
 Ph: (410) 223-0020 - Fax: (410) 223-0022
 Ph: (618) 753-9536 - Fax: (618) 752-3885
 Ph: (309) 342-4042 - Fax: (309) 342-3788
 STATE OF ILLINOIS DESIGN FIRM # 1842738

| | | | | | |
|---------------------|--------------------|---------------------------|--------|--------------|-----------|
| SHEET NO. 10 | F.A. RTE. | SECTION | COUNTY | TOTAL SHEETS | SHEET NO. |
| | 172 | 1-3HB | ADAMS | 165 | 111 |
| 17 SHEETS | CONTRACT NO. 72A09 | | | | |
| FED. ROAD DIST. NO. | | ILLINOIS FED. AID PROJECT | | | |