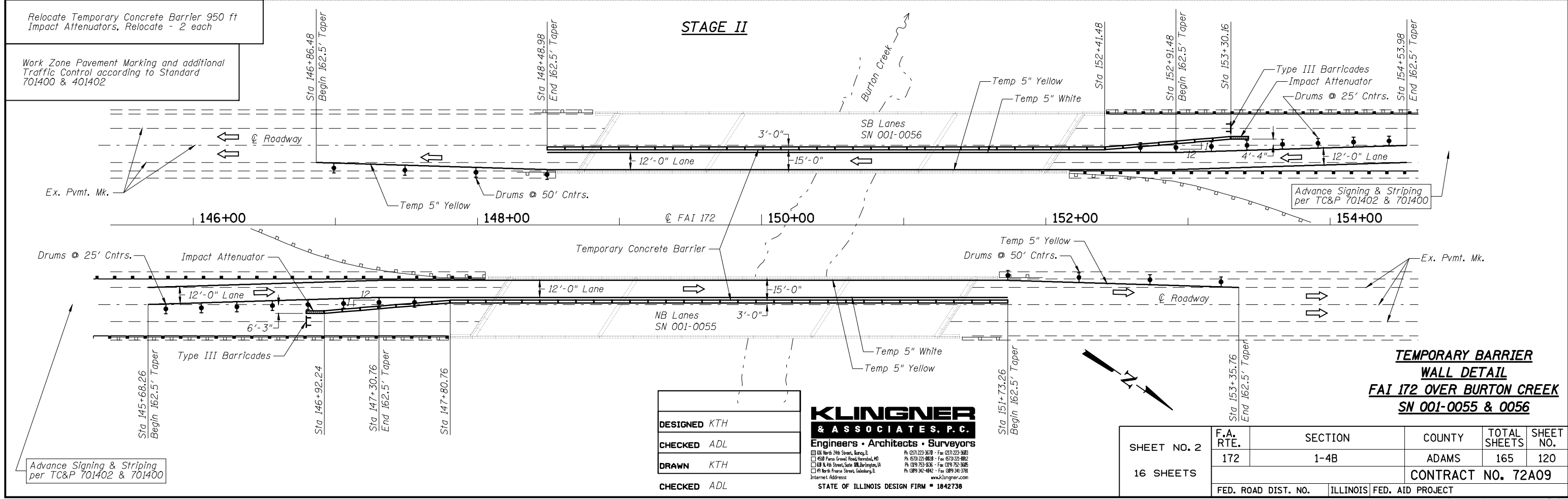
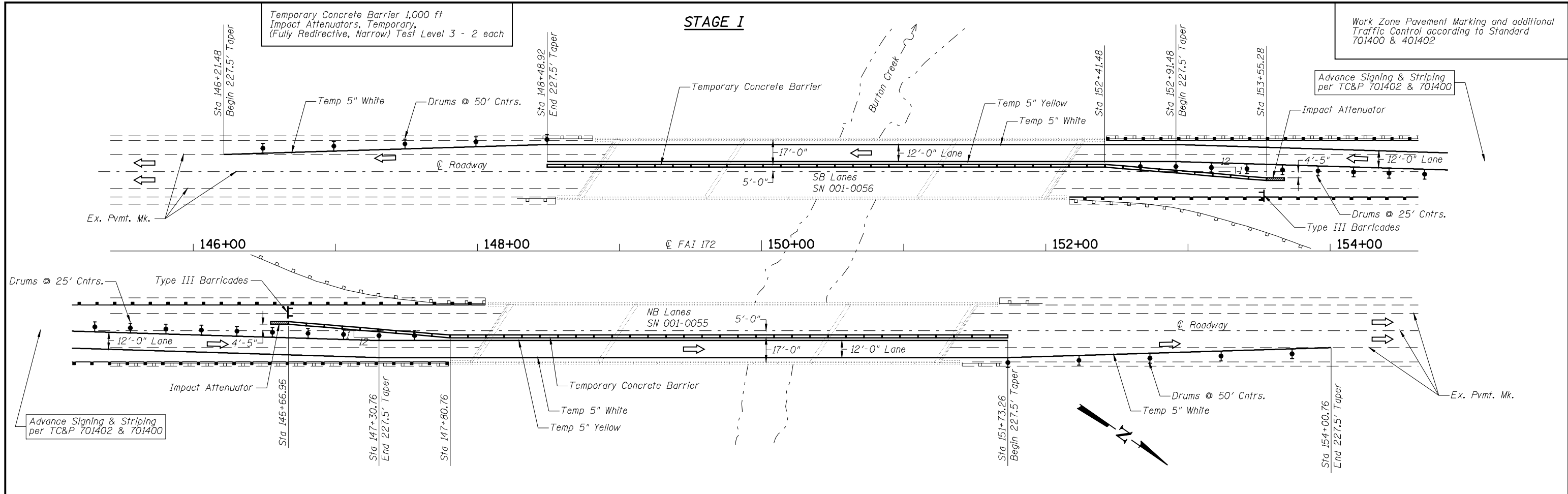


Feb-01-2010 10:56:08AM

\$FILE\$



DESIGNED	KTH
CHECKED	ADL
DRAWN	KTH
CHECKED	ADL

**KLINGNER & ASSOCIATES, P.C.**  
 Engineers • Architects • Surveyors  
 138 North 21st Street, Gary, IL 61032-2238  
 4508 Parkwood Road, Mokena, IL 60450  
 41 North Prairie Street, Calhoun, IL 61821  
 Internet Address: www.klingner.com  
 STATE OF ILLINOIS DESIGN FIRM # 1842738

**TEMPORARY BARRIER WALL DETAIL  
 FAI 172 OVER BURTON CREEK  
 SN 001-0055 & 0056**

SHEET NO. 2 16 SHEETS	F.A. RTE.	SECTION	COUNTY	TOTAL SHEETS	SHEET NO.
	172	1-4B	ADAMS	165	120
FED. ROAD DIST. NO.			ILLINOIS FED. AID PROJECT		
CONTRACT NO. 72A09					