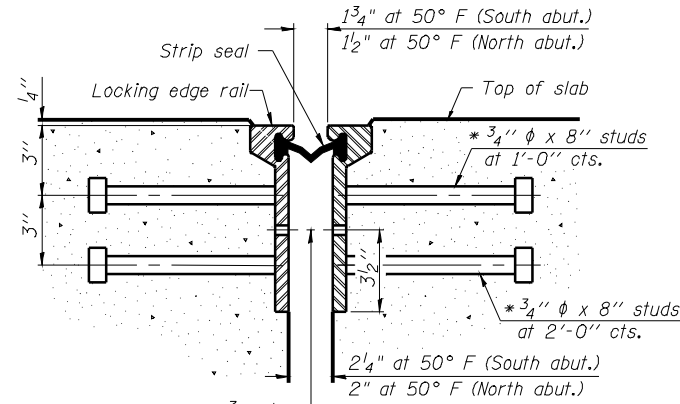
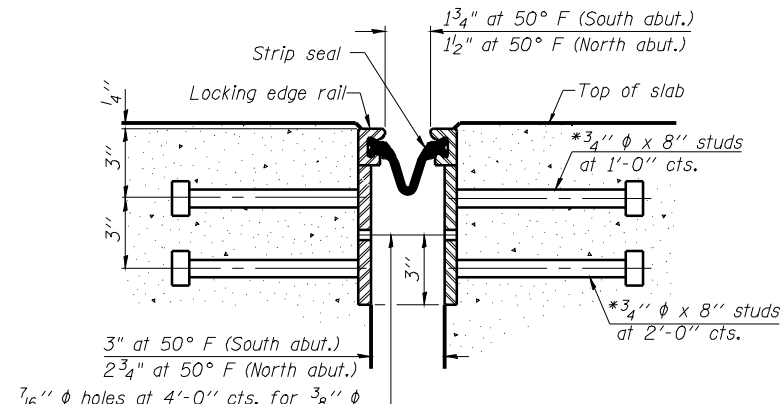


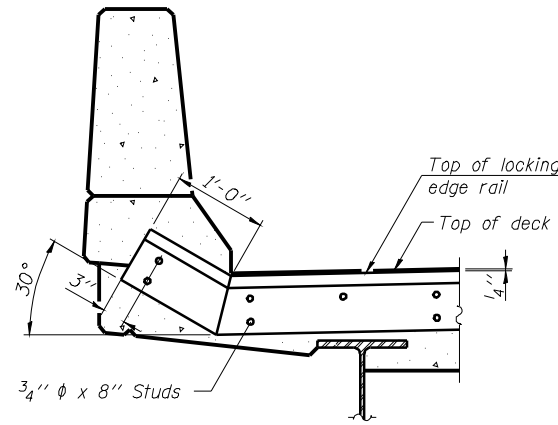
\* Granular or solid flux filled headed studs conforming to Article 1006.32 of the Std. Specs., automatically end welded.



**SECTION THRU ROLLED RAIL JOINT**

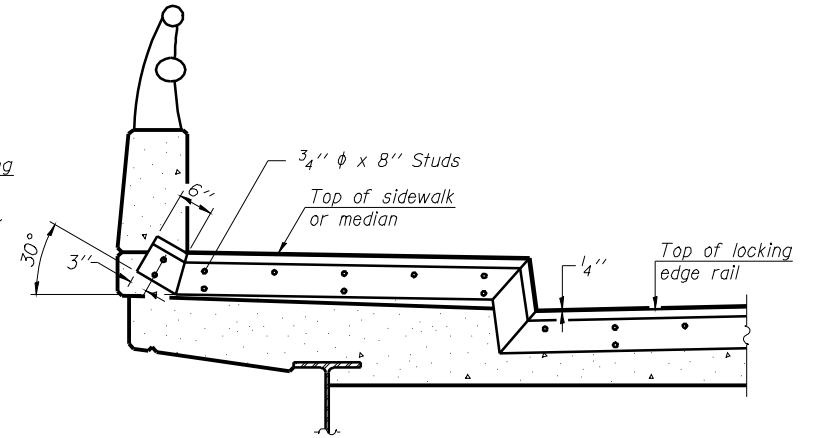


**SECTION THRU WELDED RAIL JOINT**



**AT PARAPET**

See Section A-A for end treatment of skews > 30°.



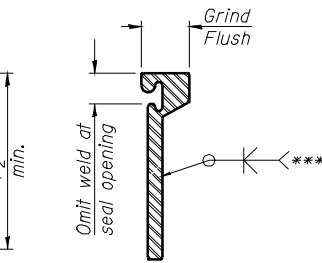
**AT SIDEWALK OR MEDIAN**

Shorter plates with a single row of studs at 12\"/>

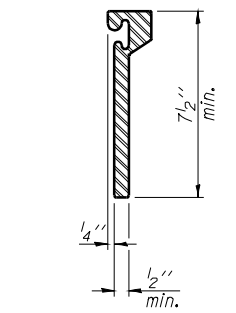
7/16\"/>

7/16\"/>

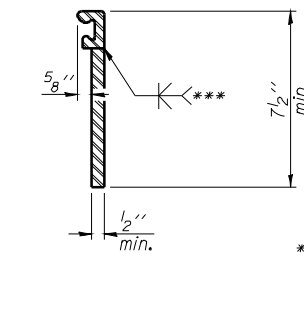
**SECTION THRU ROLLED RAIL JOINT**



\*\*\* Back gouge not required if complete joint penetration is verified by mock-up.



**ROLLED EXTRUDED RAIL**

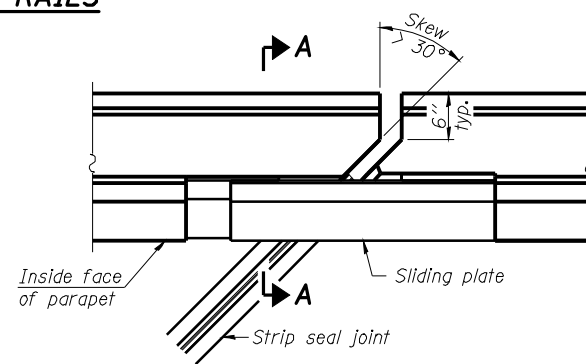


**WELDED RAIL**

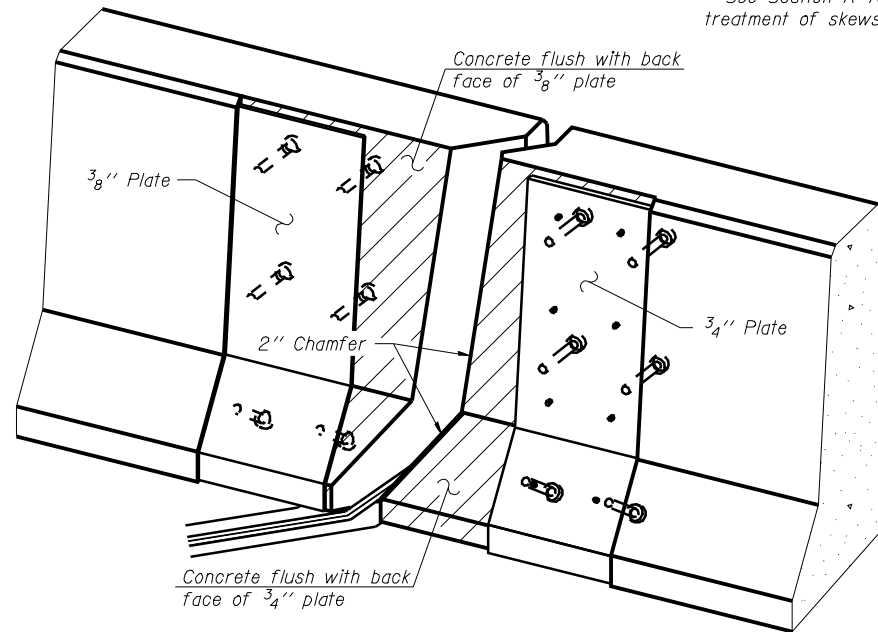
**LOCKING EDGE RAIL SPLICE**

The inside of the locking edge rail groove shall be free of weld residue. Rolled rail shown, welded rail similar.

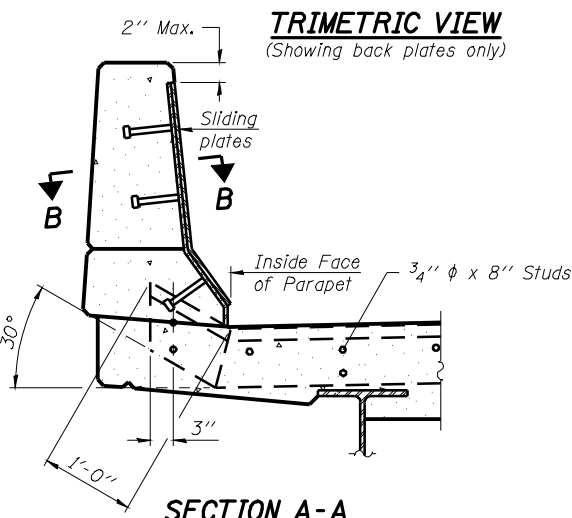
**LOCKING EDGE RAILS**



**PLAN**

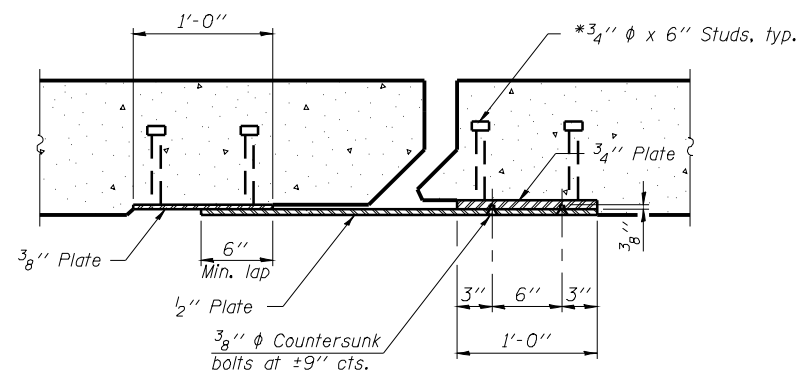


**TRIMETRIC VIEW (Showing back plates only)**



**SECTION A-A**

**POINT BLOCK DETAILS (for skews > 30°)**



**SECTION B-B**

**TYPICAL END TREATMENTS**

**Notes:**

The strip seal shall be made continuous and shall have a minimum thickness of 1/4\"/>

**BILL OF MATERIAL**

Item	Unit	Total
Preformed Joint Strip Seal	Foot	2015

**PREFORMED JOINT STRIP SEAL STRUCTURE NO. 001-0055 & 0056**

SHEET NO. 10 16 SHEETS	F.A. RTE.	SECTION	COUNTY	TOTAL SHEETS	SHEET NO.
	172	1-4B	ADAMS	165	128
FED. ROAD DIST. NO.			ILLINOIS FED. AID PROJECT		
CONTRACT NO. 72A09					

DESIGNED	KTH
CHECKED	ADL
DRAWN	KTH
CHECKED	ADL

**KLINGNER & ASSOCIATES, P.C.**  
 Engineers - Architects - Surveyors  
 1415 North 21st Street, Barrington, IL 60010-3201  
 4800 Paces Grand Plaza, Arlington, MD 21010-3201  
 480 N. 4th Street, Suite 100, Burlington, IL 60109-3201  
 1111 North Prairie Street, Galesburg, IL 62521-3201  
 Internet Address: www.klingner.com  
 STATE OF ILLINOIS DESIGN FIRM # 1842738

11-1-09

EJ-SSJ