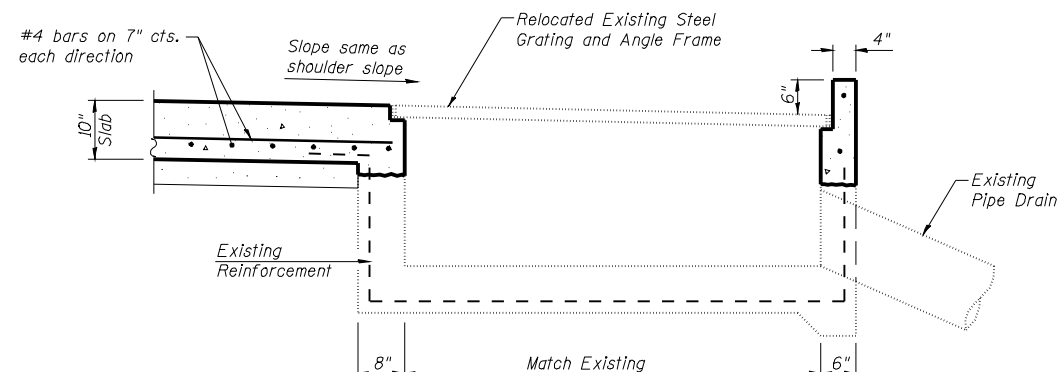
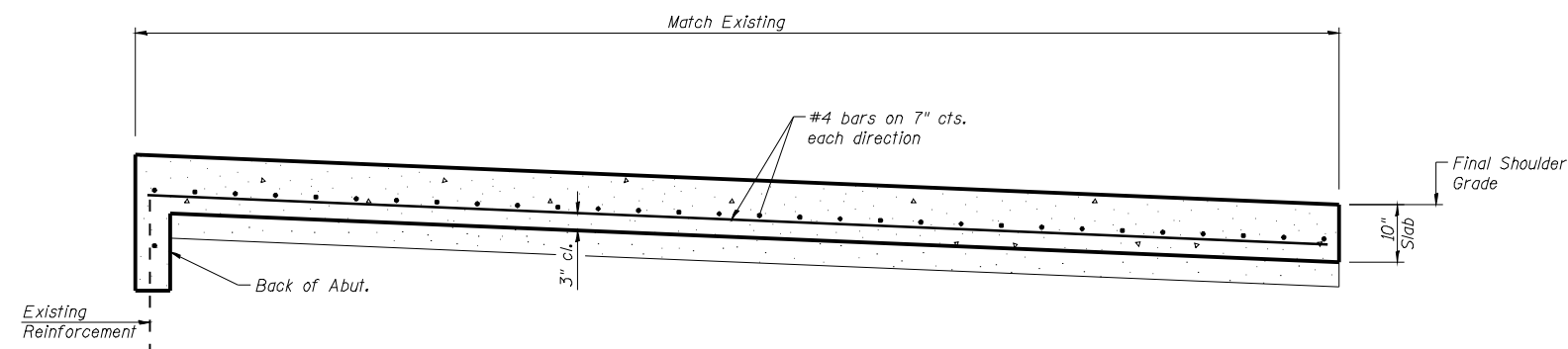


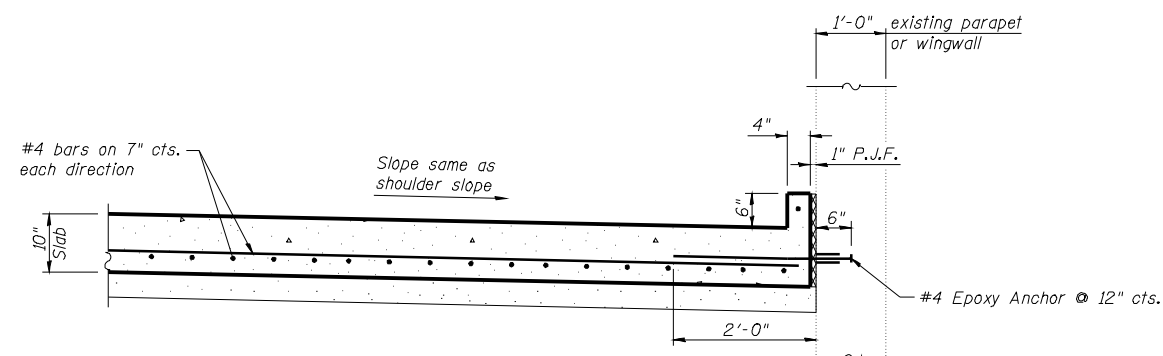
SECTION A-A



SECTION B-B



SECTION D-D



SECTION C-C

NOTES

- See plans for location of bridge approach shoulder pavement.
- The lengths of #4 bars used in the approach shoulder pavement shall be as required to accommodate the length, width and skew of the slab.
- Bridge approach shoulder pavement will be measured in place and paid for in square yards as P.C. CONCRETE BRIDGE APPROACH SHOULDER PAVEMENT which shall include the cost of subgrade preparation, Sub base Granular Material, Type A, reinforcement and P.J.F. In computing the area for payment, a deduction will be made for the area displaced by the inside of Inlet.
- Existing reinforcement bars shown are to be cleaned and incorporated into the new construction.

DESIGNED	KTH
CHECKED	ADL
DRAWN	KTH
CHECKED	ADL

KLINGNER & ASSOCIATES, P.C.
 Engineers - Architects - Surveyors
 45 North 21st Street, Barrington, IL 60010-3233
 4300 Paces Green, Huntley, IL 60142-1002
 400 N. Oak Street, Suite 100, Burlington, IL 60109-7526
 111 West Prairie Street, Galesburg, IL 61601-3701
 Tel: (815) 221-3210 Fax: (815) 221-3883
 Tel: (815) 221-3828 Fax: (815) 221-4882
 Tel: (815) 753-9536 Fax: (815) 752-3885
 Tel: (815) 942-4842 Fax: (815) 941-3701
 www.klingner.com
 STATE OF ILLINOIS DESIGN FIRM # 1842738

**BRIDGE APPROACH SHOULDER PAVEMENT DETAILS
 FAI 172 OVER BURTON CREEK
 SN 001-0055 & 0056**

SHEET NO. 14 16 SHEETS	F.A. RTE.	SECTION	COUNTY	TOTAL SHEETS	SHEET NO.
	172	1-4B	ADAMS	165	132
FED. ROAD DIST. NO.			ILLINOIS FED. AID PROJECT		
CONTRACT NO. 72A09					