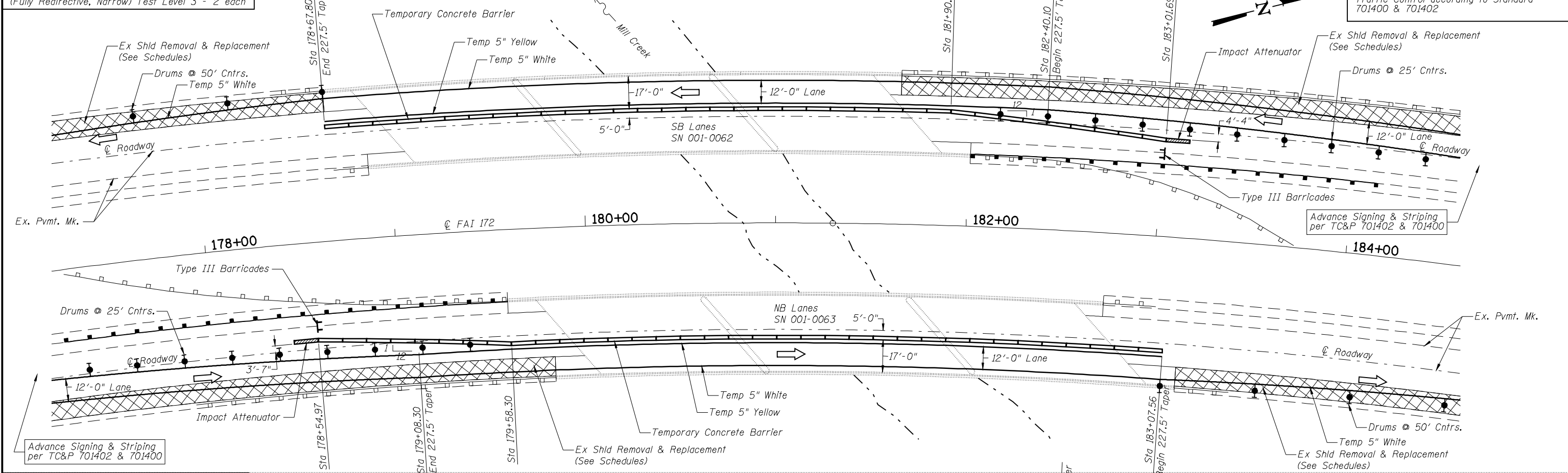


Feb-01-2010 10:56:55AM

Temporary Concrete Barrier 875 ft  
Impact Attenuators, Temporary,  
(Fully Redirective, Narrow) Test Level 3 - 2 each

### STAGE I

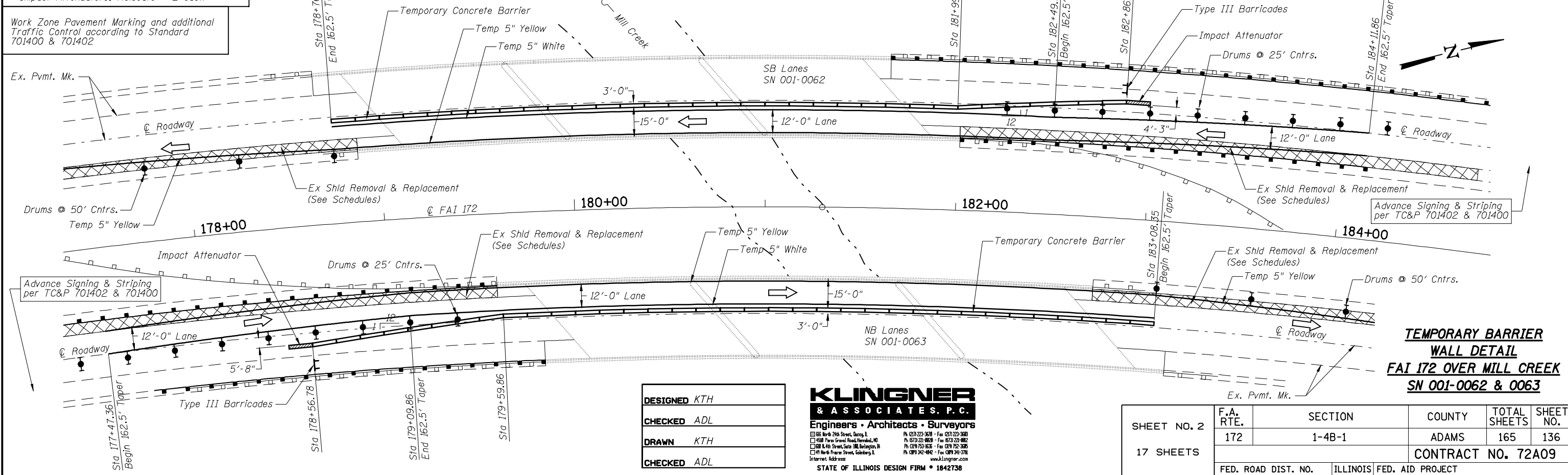
Work Zone Pavement Marking and additional  
Traffic Control according to Standard  
701400 & 701402



Relocate Temporary Concrete Barrier 850 ft  
Impact Attenuators, Relocate - 2 each

Work Zone Pavement Marking and additional  
Traffic Control according to Standard  
701400 & 701402

### STAGE II



### TEMPORARY BARRIER WALL DETAIL FAI 172 OVER MILL CREEK SN 001-0062 & 0063

DESIGNED	KTH
CHECKED	ADL
DRAWN	KTH
CHECKED	ADL

**KLINGNER & ASSOCIATES, P.C.**  
Engineers • Architects • Surveyors

86 North 24th Street, Quincy, IL 62422-3678  
408 Park Grand Road, Normal, IL 61761-2200  
101 S. 4th Street, Suite 100, Beardstown, IL 62608-3633  
41 North Prairie Street, Salsburg, IL 62453-0402

Ph: (217) 223-3678 • Fax: (217) 223-3688  
Ph: (312) 221-9828 • Fax: (312) 221-9822  
Ph: (217) 223-3633 • Fax: (217) 223-3636  
Ph: (312) 342-4842 • Fax: (312) 342-3776

Internet Address: www.klingner.com  
STATE OF ILLINOIS DESIGN FIRM # 1842738

SHEET NO. 2 17 SHEETS	F.A. RTE.	SECTION	COUNTY	TOTAL SHEETS	SHEET NO.
	172	1-4B-1	ADAMS	165	136
FED. ROAD DIST. NO.			ILLINOIS FED. AID PROJECT		
CONTRACT NO. 72A09					