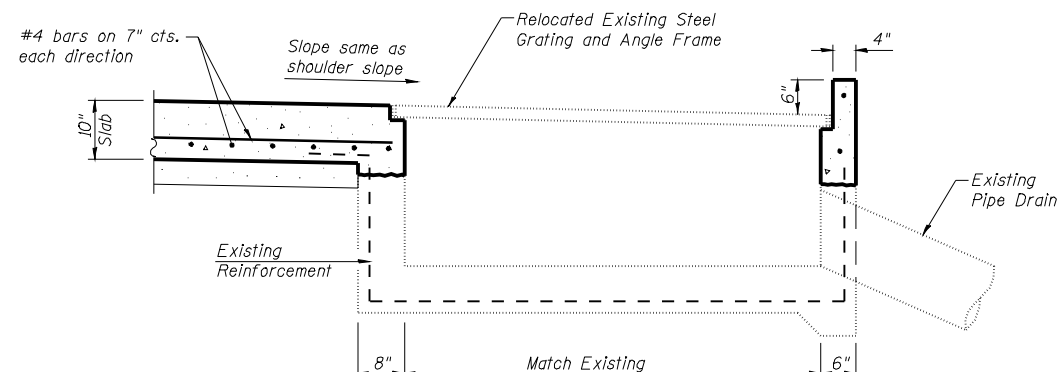
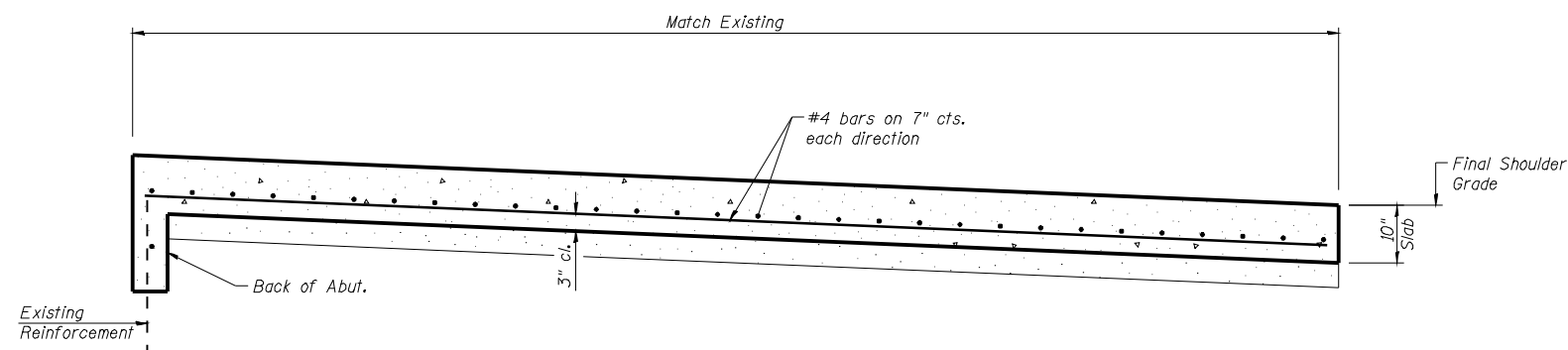


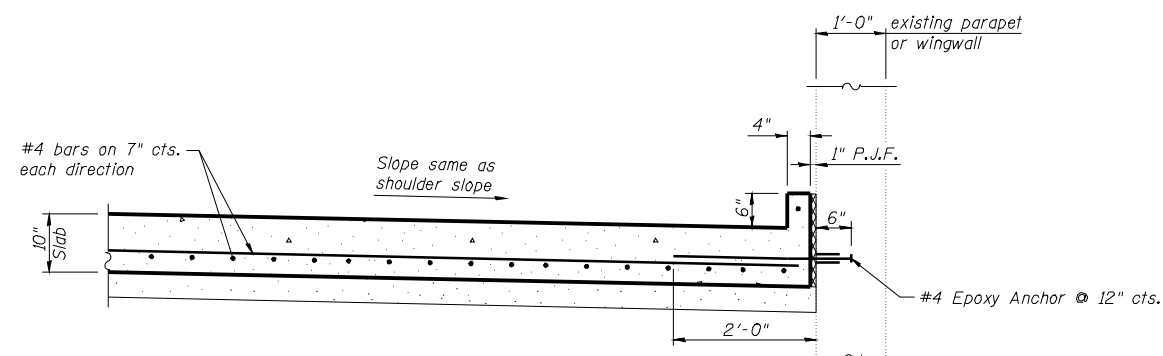
SECTION A-A



SECTION B-B



SECTION D-D



SECTION C-C

NOTES

See plans for location of bridge approach shoulder pavement.

The lengths of #4 bars used in the approach shoulder pavement shall be as required to accommodate the length, width and skew of the slab.

Bridge approach shoulder pavement will be measured in place and paid for in square yards as P.C. CONCRETE BRIDGE APPROACH SHOULDER PAVEMENT which shall include the cost of subgrade preparation, Sub base Granular Material, Type A, reinforcement and P.J.F. In computing the area for payment, a deduction will be made for the area displaced by the inside of Inlet.

Existing reinforcement bars shown are to be cleaned and incorporated into the new construction.

**BRIDGE APPROACH SHOULDER PAVEMENT
FAI 172 OVER MILL CREEK
SN 001-0062 & 0063**

DESIGNED	KTH
CHECKED	ADL
DRAWN	KTH
CHECKED	ADL

KLINGNER & ASSOCIATES, P.C.
Engineers • Architects • Surveyors
165 North 21st Street, Barrington, IL 60010-3233-3803
4308 Paces Green, Hunt, Hunt, MD 20638
400 N. 4th Street, Suite 100, Burlington, IL 60109-7526-3605
111 W. 1st Street, Suite 100, Galesburg, IL 62521-3101
www.klingner.com
STATE OF ILLINOIS DESIGN FIRM # 1842738

SHEET NO. 17 17 SHEETS	F.A. RTE.	SECTION	COUNTY	TOTAL SHEETS	SHEET NO.
	172	1-4B	ADAMS	165	151
FED. ROAD DIST. NO.			ILLINOIS FED. AID PROJECT		
CONTRACT NO. 72A09					