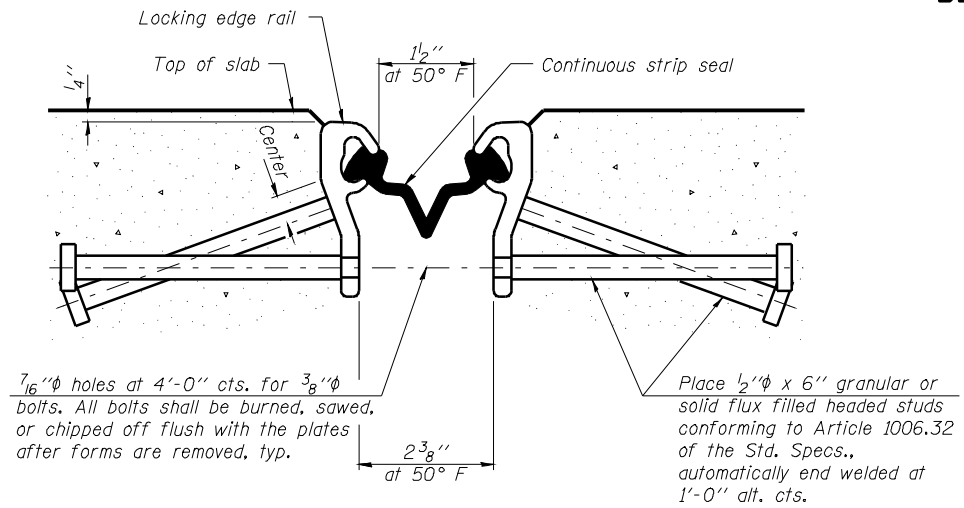
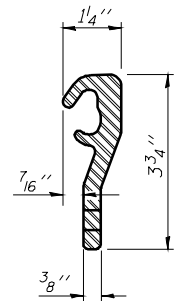


STATE OF ILLINOIS
DEPARTMENT OF TRANSPORTATION

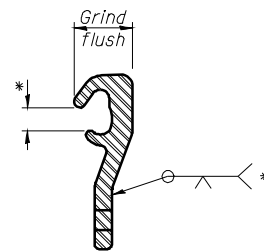


SECTION THRU STRIP SEAL JOINT



LOCKING EDGE RAIL

* Omit weld at seal opening.



LOCKING EDGE RAIL SPLICE

Notes:

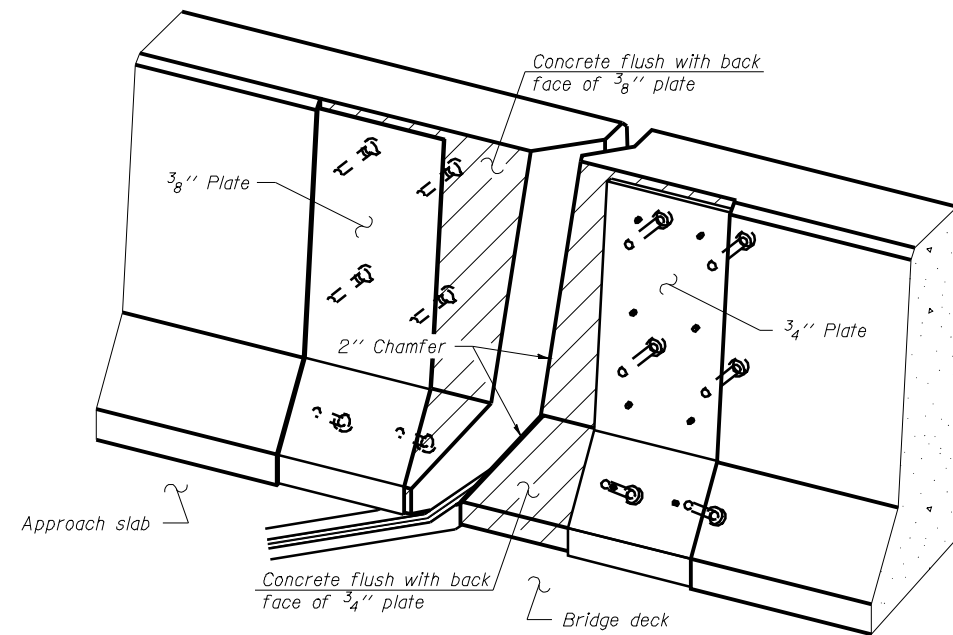
The strip seal shall be made continuous and shall have a minimum thickness of 1/4". The configuration of the strip seal shall match the configuration of the Locking Edge Rails.

The height and thickness of the Locking Edge Rails shown are minimum dimensions. The actual configuration of the Locking Edge Rails and matching strip seal may vary from manufacturer to manufacturer. Flanged edge rails will not be allowed.

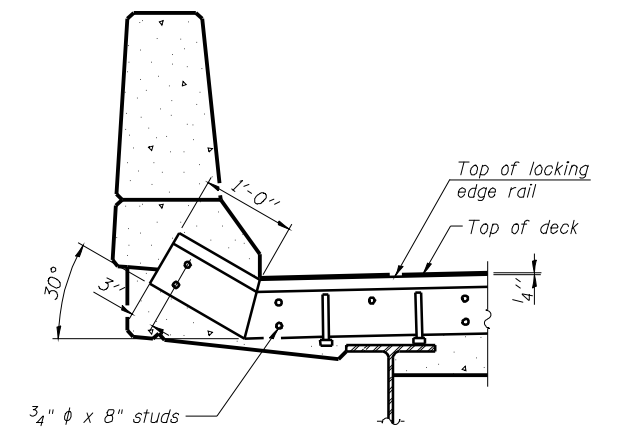
The inside of the Locking Edge Rail groove shall be free of weld residue. Locking Edge Rails may be spliced at slope discontinuities and stage construction joints.

The manufacturer's recommended installation methods shall be followed. All steel components shall be galvanized after fabrication according to Article 520.03 of the Standard Specifications.

Maximum space between rail segments at stage lines shall be 3/16", sealed with a suitable sealant.



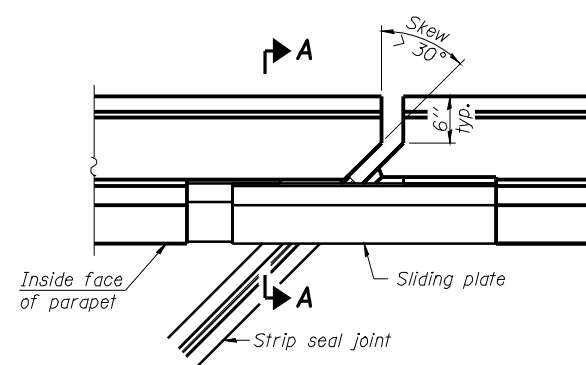
TRIMETRIC VIEW
(Showing back plates only)



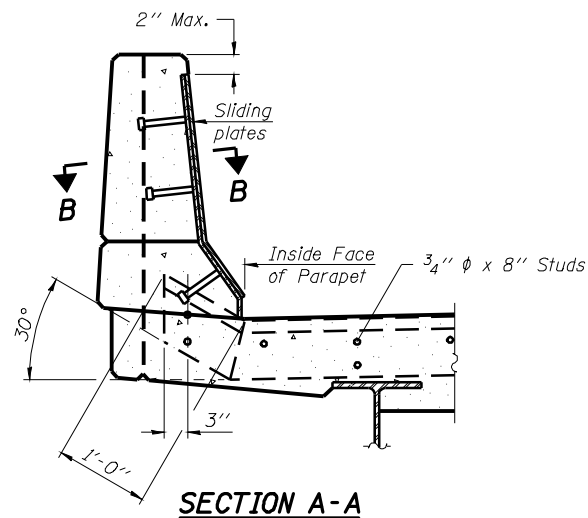
AT PARAPET

See Section A-A for end treatment of skews > 30°.

TYPICAL END TREATMENTS

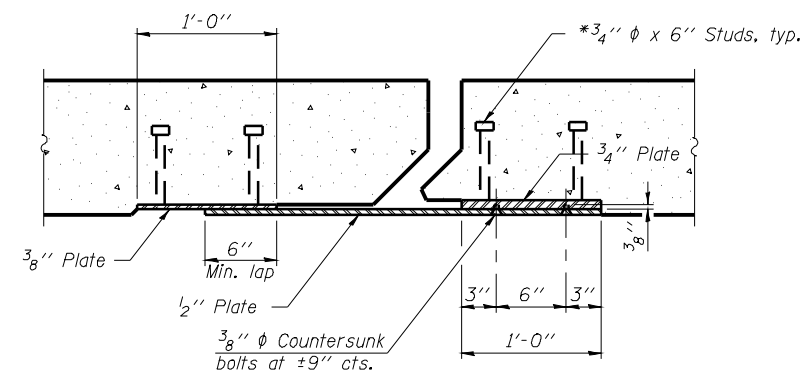


PLAN



SECTION A-A

POINT BLOCK DETAILS
(for skews > 30°)



SECTION B-B

BILL OF MATERIAL

Item	Unit	Total
Preformed Joint Strip Seal	Foot	91

**PREFORMED JOINT STRIP SEAL
STRUCTURE NO. 001-0061**

<p>LIN ENGINEERING, LTD. Consulting Engineers Chatham, Illinois</p>	SHEET NO. 5	F.A.I. RTE. 172	SECTION 1-5HB	COUNTY ADAMS	TOTAL SHEETS 165	SHEET NO. 156
	6 SHEETS	CONTRACT NO. 72A09				
Designed By: ESH Date: 11/2009		Checked By: MTH File: 001-0061.dgn		FED. ROAD DIST. NO. ILLINOIS FED. AID PROJECT		