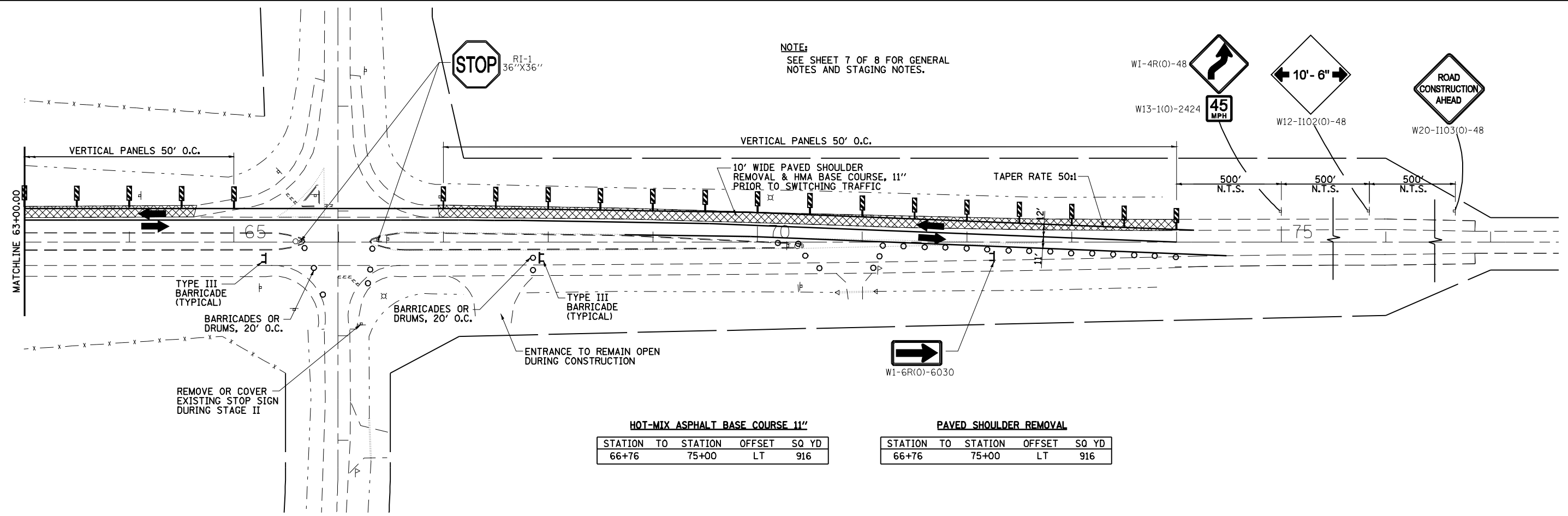


PAVED SHOULDER REMOVAL

STATION TO	STATION	OFFSET	SQ YD
51+26	57+85	LT	732
58+69	64+84	LT	683

HOT-MIX ASPHALT BASE COURSE 11"

STATION TO	STATION	OFFSET	SQ YD
51+26	57+85	LT	732
58+69	64+84	LT	683



NOTE:
SEE SHEET 7 OF 8 FOR GENERAL NOTES AND STAGING NOTES.

HOT-MIX ASPHALT BASE COURSE 11"

STATION TO	STATION	OFFSET	SQ YD
66+76	75+00	LT	916

PAVED SHOULDER REMOVAL

STATION TO	STATION	OFFSET	SQ YD
66+76	75+00	LT	916