

F.A.S. RTE.	SECTION	COUNTY	TOTAL SHEETS	SHEET NO.
2701	(103,104)RS-4	ILLINOIS	9	1
CONTRACT NO. 74134				

STATE OF ILLINOIS
DEPARTMENT OF TRANSPORTATION
DIVISION OF HIGHWAYS

**PROPOSED
HIGHWAY PLANS**

FAS ROUTE 2701 (IL 37)
SECTION (103,104)RS-4

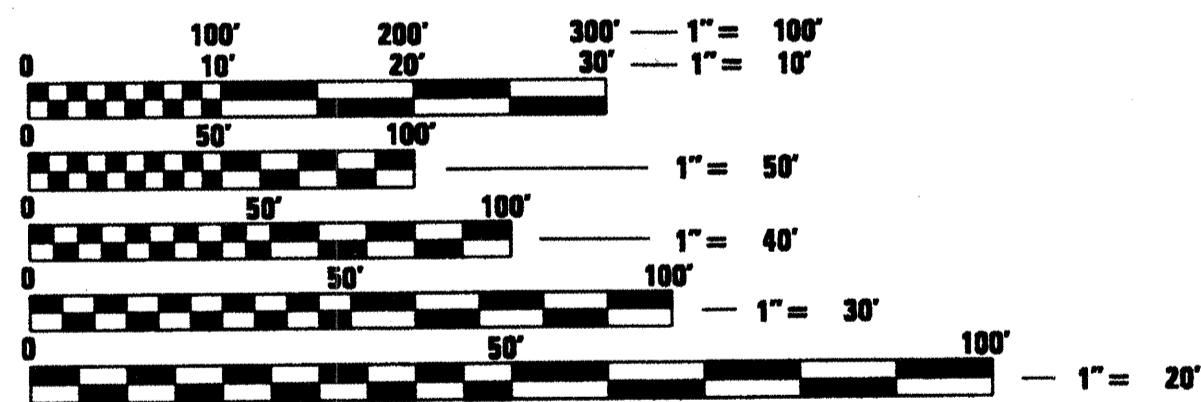
HMA RESURFACING
FAYETTE, EFFINGHAM & CLAY COUNTIES

C-97-009-06

FOR INDEX OF SHEETS, SEE SHEET NO. 2

BRIDGE OMISSION
579+79 TO 581+51

2008 ADT = 1400

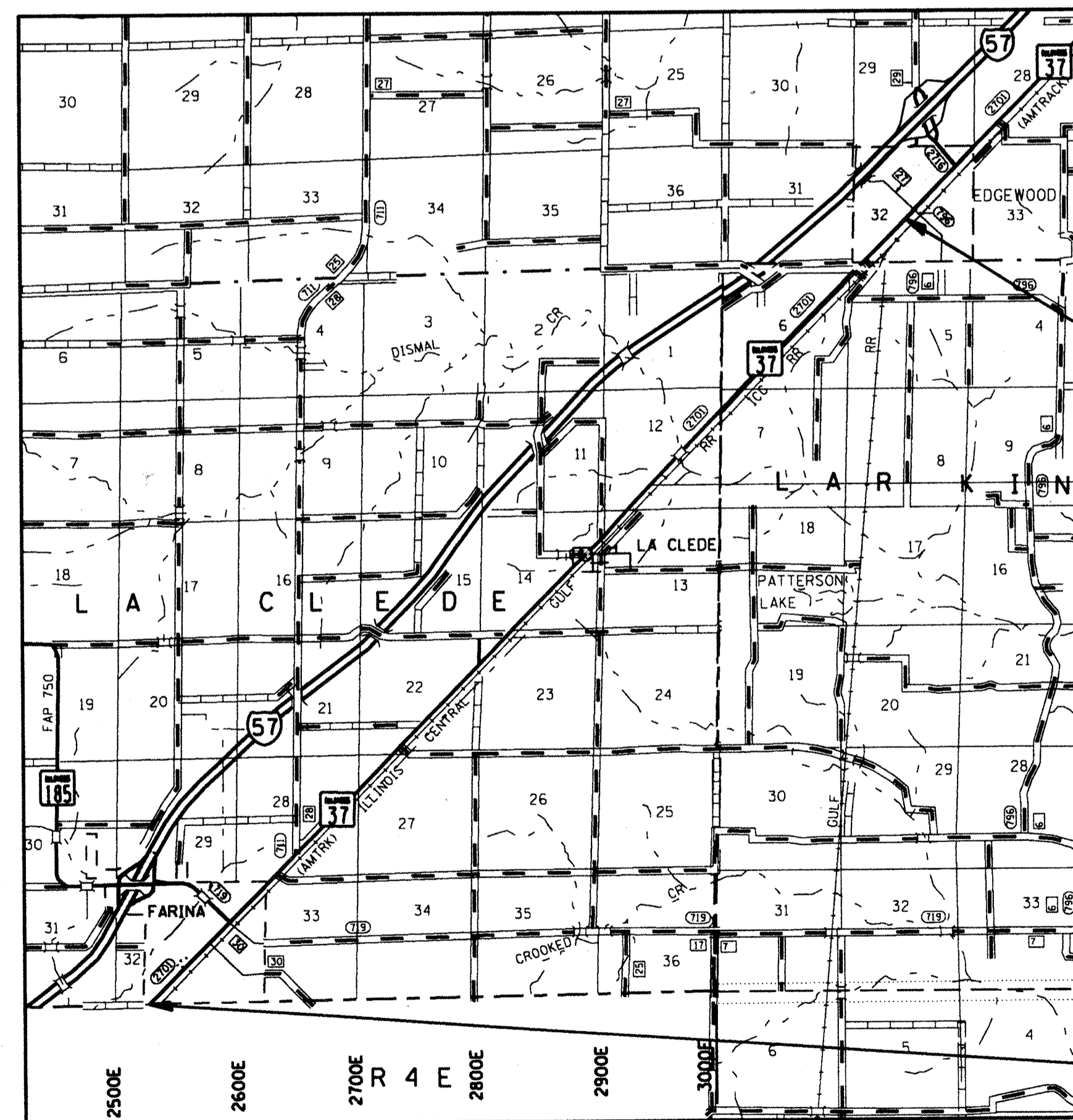


FULL SIZE PLANS HAVE BEEN PREPARED USING STANDARD ENGINEERING SCALES. REDUCED SIZED PLANS WILL NOT CONFORM TO STANDARD SCALES. IN MAKING MEASUREMENTS ON REDUCED PLANS, THE ABOVE SCALES MAY BE USED.

J.U.L.I.E.
JOINT UTILITY LOCATION INFORMATION FOR EXCAVATION
1-800-892-0123
OR 811

PROJECT ENGINEER: MARK DAUGHERTY
PROJECT MANAGER: SOLOMON DZAKUMA

CONTRACT NO. 74134



PROJECT ENDS
STA 725+80

PROJECT BEGINS
STA 241+50

GROSS LENGTH = 48,430 FT. = 9.172 MILE
NET LENGTH = 48,258 FT. = 9.140 MILE

• Effingham, Fayette, & Clay
D-97-007-06



LOCATION OF SECTION INDICATED THUS: - [thick black line] -

STATE OF ILLINOIS
DEPARTMENT OF TRANSPORTATION
DIVISION OF HIGHWAYS

SUBMITTED January 26, 2010

Roger L. Daniels
DEPUTY DIRECTOR OF HIGHWAYS, REGION ENGINEER

March 19, 2010
Scott E. Stolt, P.E.
ENGINEER OF DESIGN AND ENVIRONMENT

March 19, 2010
Christine M. Reed
DIRECTOR OF HIGHWAYS, CHIEF ENGINEER

**PRINTED BY THE AUTHORITY
OF THE STATE OF ILLINOIS**

GENERAL NOTES

THIS SECTION SHALL BE CONSTRUCTED IN ACCORDANCE WITH THE PLANS; THE "STANDARD SPECIFICATIONS FOR ROAD AND BRIDGE CONSTRUCTION", ADOPTED JANUARY 1, 2007; THE "SUPPLEMENTAL SPECIFICATIONS AND RECURRING SPECIAL PROVISIONS", ADOPTED JANUARY 1, 2010, AND THE SPECIAL PROVISIONS INCLUDED IN THIS PROPOSAL.

THE WORK INCLUDED IN THIS SECTION CONSISTS OF MILLING AND OVERLAYING THE EXISTING PAVEMENT WITH HOT-MIX ASPHALT AND PLACEMENT OF AGGREGATE SHOULDERS. THE WORK ALSO INCLUDES PATCHING AND PAVEMENT MARKING AND ANY OTHER WORK NECESSARY TO COMPLETE THE SECTION. THE SECTION STARTS AT THE MARION COUNTY LINE AND CONTINUES NORTH FOR 9.2 MILES TO EDGEWOOD.

SHORT TERM PAVEMENT MARKING SHALL BE APPLIED TO THE MILLED SURFACE, BITUMINOUS MATERIALS (PRIME COAT) (IF USING CUTBACK), AND HOT-MIX ASPHALT SURFACE COURSE AS SPECIFIED IN SECTION 703 OF THE STANDARD SPECIFICATIONS. TEMPORARY TAPE SHALL BE USED ON THE SURFACE COURSE AND PAINT SHALL BE USED ON THE MILLED SURFACE.

THE TOTAL QUANTITY OF PAINT PAVEMENT MARKING - LINE 4" CONSISTS OF 18,153 FEET OF YELLOW AND 96,860 FEET OF WHITE. THE PAINT PAVEMENT MARKING - LINE 6" IS FOR THE CROSS-WALK IN FARINA.

THE CONTRACTOR SHALL PROVIDE INTERNET ACCESS TO THE HOT-MIX ASPHALT PLANT QUALITY CONTROL LAB SO THAT HOT-MIX ASPHALT PLANT REPORTS CAN BE E-MAILED TO THE DISTRICT HEADQUARTERS. THIS WORK SHALL BE INCLUDED IN THE COST OF ALL HOT-MIX ASPHALT ITEMS.

THE CONTRACTOR SHALL USE EITHER RC-70 OR AN EMULSIFIED POLYMER PRIME SS-1HP FOR THE PAY ITEM BITUMINOUS MATERIALS (PRIME COAT).

AGGREGATE FOR AGGREGATE SHOULDERS SHALL BE CRUSHED STONE, CRUSHED CONCRETE OR RAP. AGGREGATE FOR AGGREGATE SURFACE COURSE, TYPE B, SHALL BE CRUSHED STONE OR CRUSHED CONCRETE.

THE PAY ITEM TEMPORARY RAMP HAS BEEN INCLUDED FOR THE CONSTRUCTION OF TEMPORARY RAMPS IN ACCORDANCE WITH ARTICLE 406.08 OF THE STANDARD SPECIFICATIONS. THE CONTRACT UNIT PRICE PER SQUARE YARD FOR TEMPORARY RAMP SHALL INCLUDE BOTH THE INSTALLATION AND THE REMOVAL OF THE RAMPS.

THE FOLLOWING RATES OF APPLICATION HAVE BEEN USED IN CALCULATING PLAN QUANTITIES:

HOT MIX ASPHALT	112 LBS/SQ YD/IN
BITUMINOUS MATERIALS PRIME COAT	0.1 GALLONS/SQ YD
AGGREGATE PRIME COAT	4 LBS/SQ YD
GRANULAR MATERIAL	2.05 TONS/CU YD

THE FOLLOWING MIXTURE REQUIREMENTS ARE APPLICABLE TO THIS PROJECT:

APPLICATION	AC/PG	DESIGN AIR VOIDS	MIXTURE COMPOSITION	FRICTION AGGREGATE
SURFACE COURSE	PG 64-22	4.0% @ N=70	IL - 9.5	MIXTURE C
INCIDENTAL SURFACE	PG 64-22	4.0% @ N=70	IL - 9.5	MIXTURE C
PAVEMENT PATCHING	PG 64-22	4.0% @ N=70	IL - 19.0	N/A

INDEX OF SHEETS

SHEET NO.	ITEM
1	COVER SHEET
2	INDEX OF SHEETS & GENERAL NOTES
3	SUMMARY OF QUANTITIES
4-5	TYPICAL SECTIONS
6	SURVEY TIES
7	SCHEDULE OF QUANTITIES & DETAILS
8	ENTRANCE SCHEDULE & DETAILS
9	LOCATION MAP

THE FOLLOWING STANDARDS ARE A PART OF THESE PLANS AND ARE INCLUDED AFTER SHEET NO. 9:

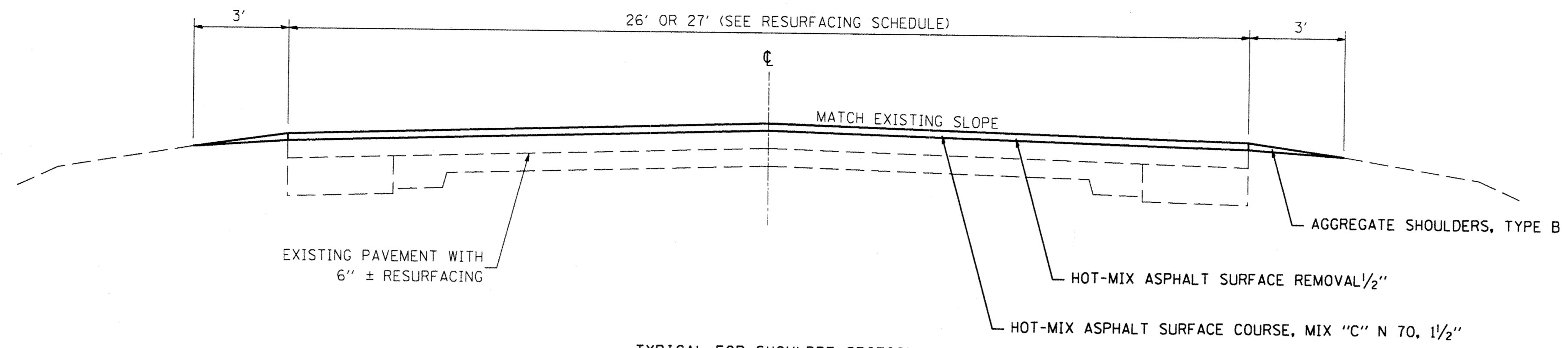
STD. NO.	DESCRIPTION
406201-01	MAILBOX TURNOUT
442201-03	CLASS C AND D PATCHES
701006-03	OFF-RD OPERATIONS, 2L, 2W, 15' TO 24" FROM PAVEMENT EDGE
701011-02	OFF-RD MOVING OPERATIONS, 2L, 2W, DAY ONLY
701201-03	LANE CLOSURE, 2L, 2W, DAY ONLY, FOR SPEEDS >= 45
701301-03	LANE CLOSURE, 2L, 2W, SHORT TIME OPERATIONS
701306-02	LANE CLOSURE, 2L, 2W, SLOW MOVING OPERATIONS DAY ONLY, FOR SPEEDS >= 45 MPH
701311-03	LANE CLOSURE 2L, 2W, MOVING OPERATIONS - DAY ONLY
701336-05	LANE CLOSURE, 2L, 2W, WORK AREAS IN SERIES, FOR SPEEDS >= 45
701901-01	TRAFFIC CONTROL DEVICES
780001-02	TYPICAL PAVEMENT MARKINGS
781001-03	TYPICAL APPLICATIONS RAISED REFLECTIVE PAVEMENT MARKERS

FILE NAME =	USER NAME = teasleyck	DESIGNED -	REVISED -	STATE OF ILLINOIS DEPARTMENT OF TRANSPORTATION	GENERAL NOTES & INDEX OF SHEETS		F.A.S. RTE.	SECTION	COUNTY	TOTAL SHEETS	SHEET NO.
ca:\pwwork\PHWIDOT\TEASLEYCK\d0150346\74134-shr-gennotes.dgn	74134-shr-gennotes.dgn	DRAWN -	REVISED -				2701	(103.104)RS-4			2
PLOT SCALE = 100.0000' / IN.	CHECKED -	REVISED -					CONTRACT NO. 74134				
PLOT DATE = 1/25/2010	DATE -	REVISED -			SCALE:	SHEET NO. OF SHEETS	STA.	TO STA.	ILLINOIS FED. AID PROJECT		

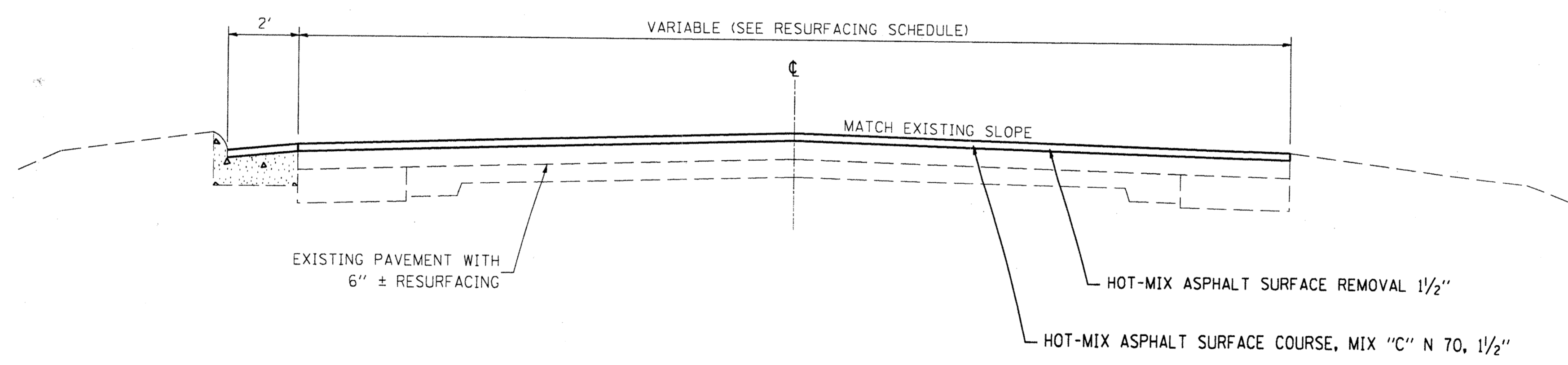
SUMMARY OF QUANTITIES			100% STATE	CONSTRUCTION TYPE CODE					
CODE NO	ITEM	UNIT	TOTAL QUANTITIES 1000	FAYETTE CO.	CLAY CO.	EFFINGHAM CO.	50% VILLAGE 50% STATE FAYETTE CO.	100% VILLAGE FAYETTE CO.	-----
40200800	AGGREGATE SURFACE COURSE, TYPE B	TON	58	44	5	9			
40600100	BITUMINOUS MATERIALS (PRIME COAT)	GALLON	14193	10725	2560	847	61		
40600300	AGGREGATE (PRIME COAT)	TON	285	214.8	52	17	1.2		
40600895	CONSTRUCTING TEST STRIP	EACH	1	1					
40600982	HOT-MIX ASPHALT SURFACE REMOVAL - BUTT JOINT	SQ YD	263	177		86			
40600990	TEMPORARY RAMP	SQ YD	58	44		14			
40603315	HOT-MIX ASPHALT SURFACE COURSE, MIX "C", N70	TON	11962	9009	2191	711	51		
40800050	INCIDENTAL HOT-MIX ASPHALT SURFACING	TON	104	74	6	24			
44000151	HOT-MIX ASPHALT SURFACE REMOVAL, 1/2"	SQ YD	117139	89564	19197	8378			
44000155	HOT-MIX ASPHALT SURFACE REMOVAL, 1 1/2"	SQ YD	22887	16339	5941			607	
44000198	HOT-MIX ASPHALT SURFACE REMOVAL, VARIABLE DEPTH	SQ YD	1636	1174	462				
44201803	CLASS D PATCHES, TYPE II, 13 INCH	SQ YD	891	868		23			
44201807	CLASS D PATCHES, TYPE III, 13 INCH	SQ YD	163	126		35			
44201809	CLASS D PATCHES, TYPE IV, 13 INCH	SQ YD	55	55					
48101200	AGGREGATE SHOULDERS, TYPE B	TON	1717	1301	291	125			
66700205	PERMANENT SURVEY MARKERS, TYPE I	EACH	6	6					
67000500	ENGINEER'S FIELD OFFICE, TYPE B	CAL MO	3	3					
67100100	MOBILIZATION	L SUM	1	0.34	0.33	0.33			
70100450	TRAFFIC CONTROL AND PROTECTION, STANDARD 701201	L SUM	1	0.34	0.33	0.33			
70100460	TRAFFIC CONTROL AND PROTECTION, STANDARD 701306	L SUM	1	0.76	0.18	0.06			
70100600	TRAFFIC CONTROL AND PROTECTION, STANDARD 701336	L SUM	1	0.95		0.05			
70300100	SHORT-TERM PAVEMENT MARKING	FOOT	9688	7296	1808	584			
70301000	WORK ZONE PAVEMENT MARKING REMOVAL	SO FT	1615	1216	302	97			
*78001110	PAINT PAVEMENT MARKING - LINE 4"	FOOT	115013	84994	23426	6593			
*78001130	PAINT PAVEMENT MARKING - LINE 6"	FOOT	66	66					
*78100100	RAISED REFLECTIVE PAVEMENT MARKER	EACH	604	454	113	37			

FILE NAME :	USER NAME : teasleyck	DESIGNED -	REVISED -	STATE OF ILLINOIS DEPARTMENT OF TRANSPORTATION	SUMMARY OF QUANTITIES				F.A.S. RTE.	SECTION	COUNTY	TOTAL SHEETS	SHEET NO.
74134-sht-soq.dgn	74134-sht-soq.dgn	DRAWN -	REVISED -						2701	(103,104)RS-4	.	3	3
PLOT SCALE = 100.0000' / IN.	CHECKED -	REVISED -	REVISED -		SCALE:	SHEET NO.	OF	SHEETS	STA.	TO STA.	CONTRACT NO. 74134		
PLOT DATE = 1/25/2010	DATE -	REVISED -	REVISED -		ILLINOIS FED. AID PROJECT								

*Specialty Items



TYPICAL FOR SHOULDER SECTION
 STA 241+50 TO STA 267+20
 STA 295+60 TO STA 549+88
 STA 564+74 TO STA 579+79
 STA 596+50 TO STA 623+82
 STA 646+10 TO STA 725+80



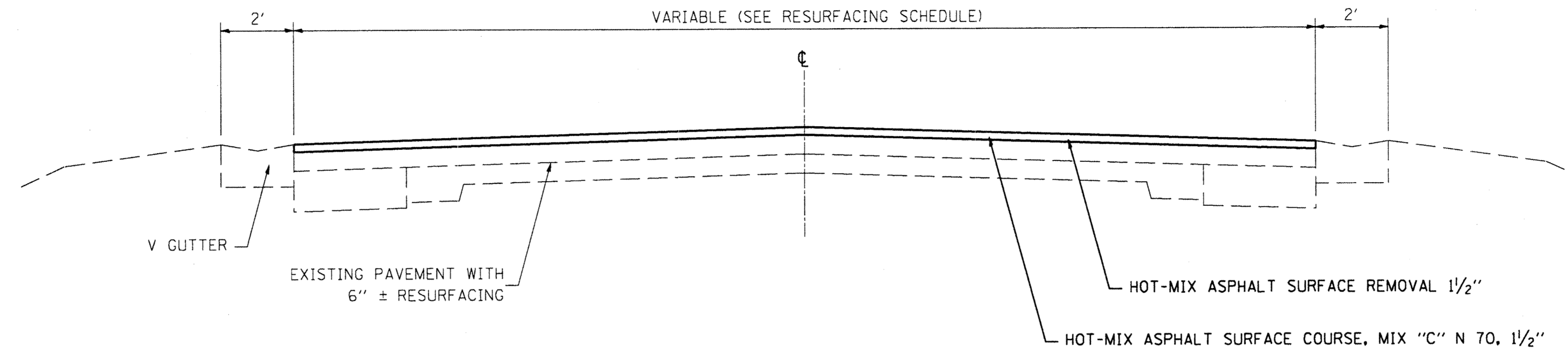
TYPICAL FOR INLAY SECTIONS
 IN FARINA
 STA 267+20 TO STA 295+60

FILE NAME =	USER NAME = teasleyck	DESIGNED -	REVISED -
ca:\pwwork\pwidot\teasleyck\d0150346\74134-shr-typicals.dgn		DRAWN -	REVISED -
	PLOT SCALE = 100.0000' / IN.	CHECKED -	REVISED -
	PLOT DATE = 1/25/2010	DATE -	REVISED -

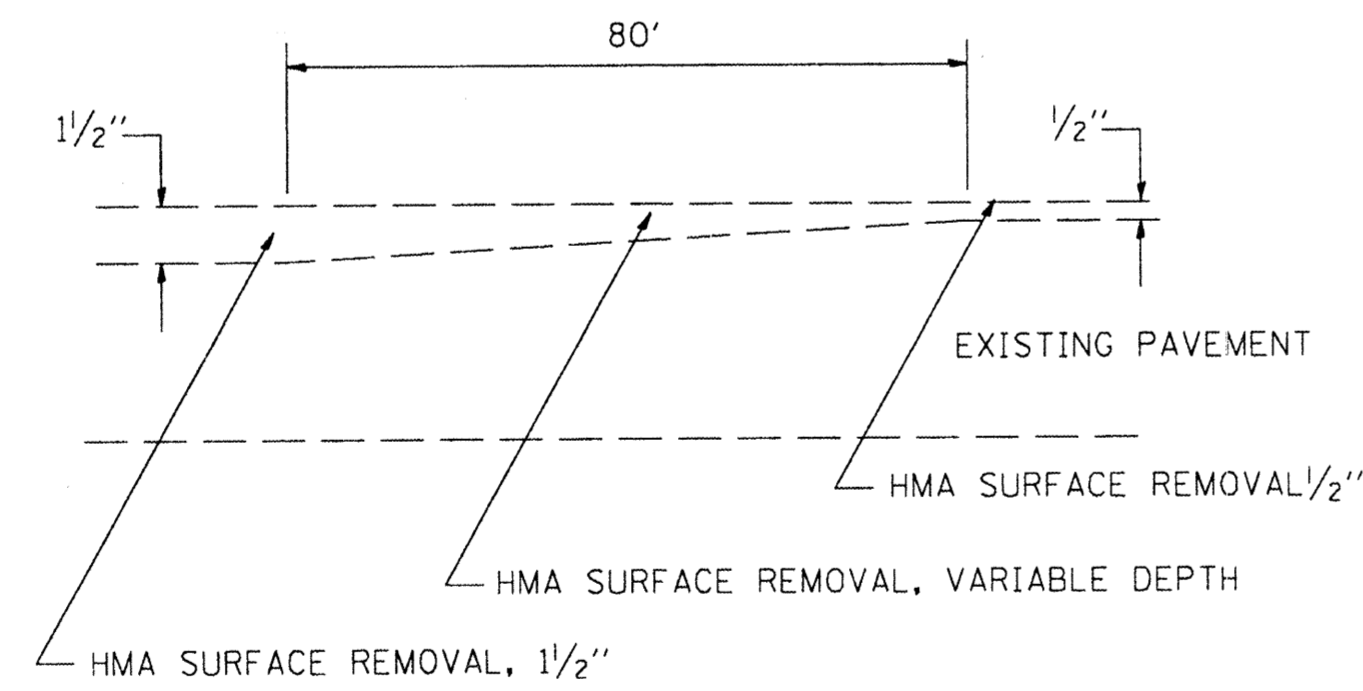
**STATE OF ILLINOIS
 DEPARTMENT OF TRANSPORTATION**

TYPICALS				
SCALE:	SHEET NO.	OF	SHEETS	STA. TO STA.

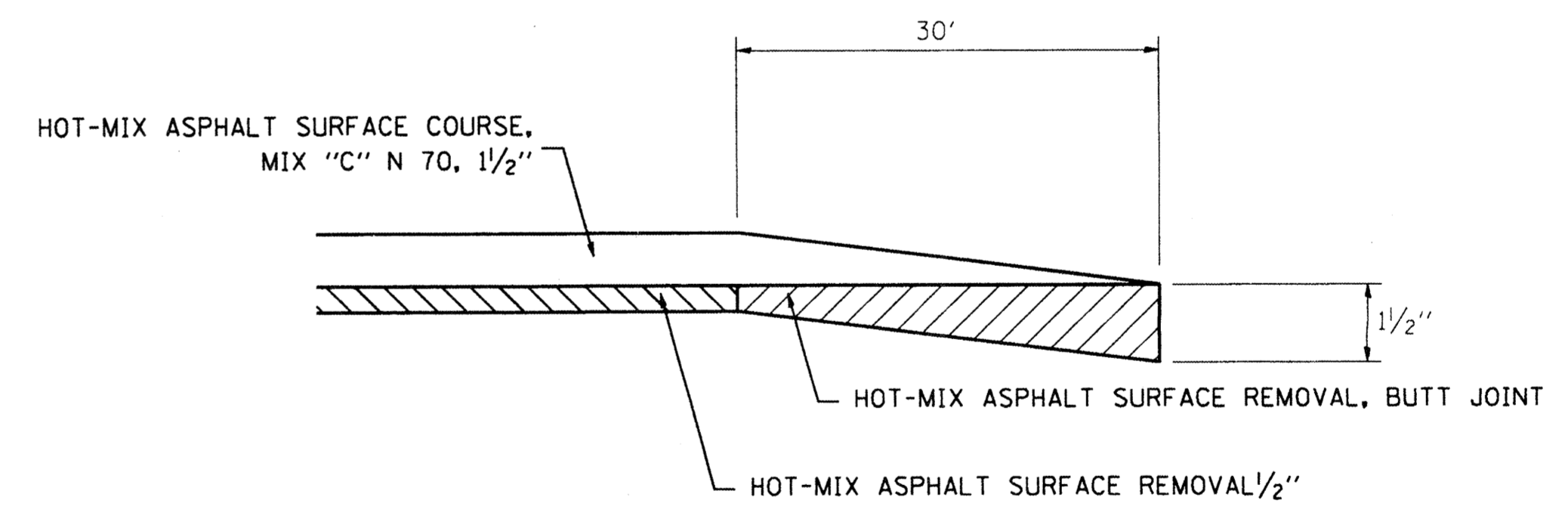
F.A.S. RTE.	SECTION	COUNTY	TOTAL SHEETS	SHEET NO.
2701	(103,104)RS-4			4
CONTRACT NO.			74134	
ILLINOIS FED. AID PROJECT				
• Effingham, Fayette, & Clay				



TYPICAL FOR INLAY SECTIONS
 STA 549+88 TO STA 564+74
 STA 581+51 TO STA 596+50
 STA 623+82 TO STA 646+10

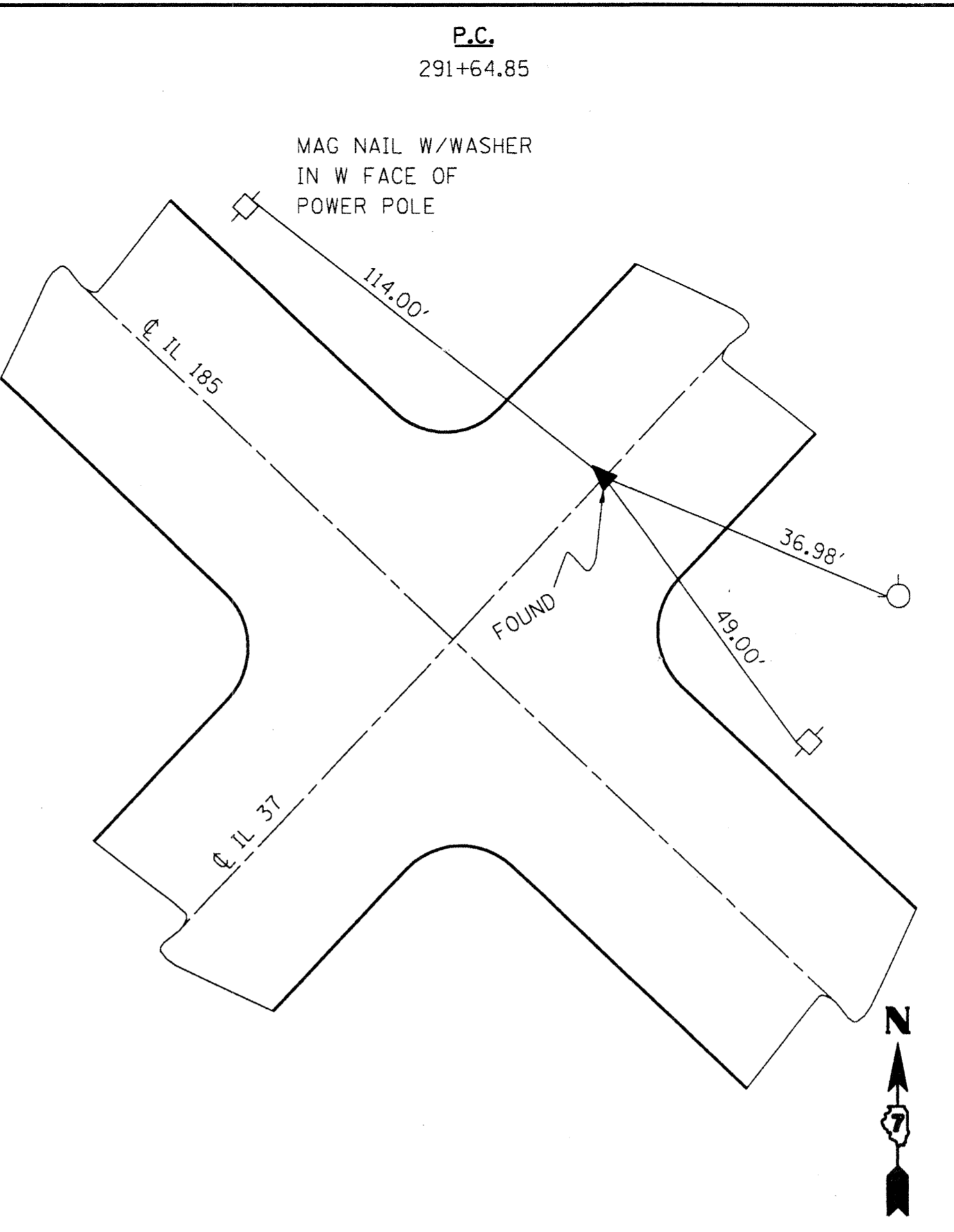
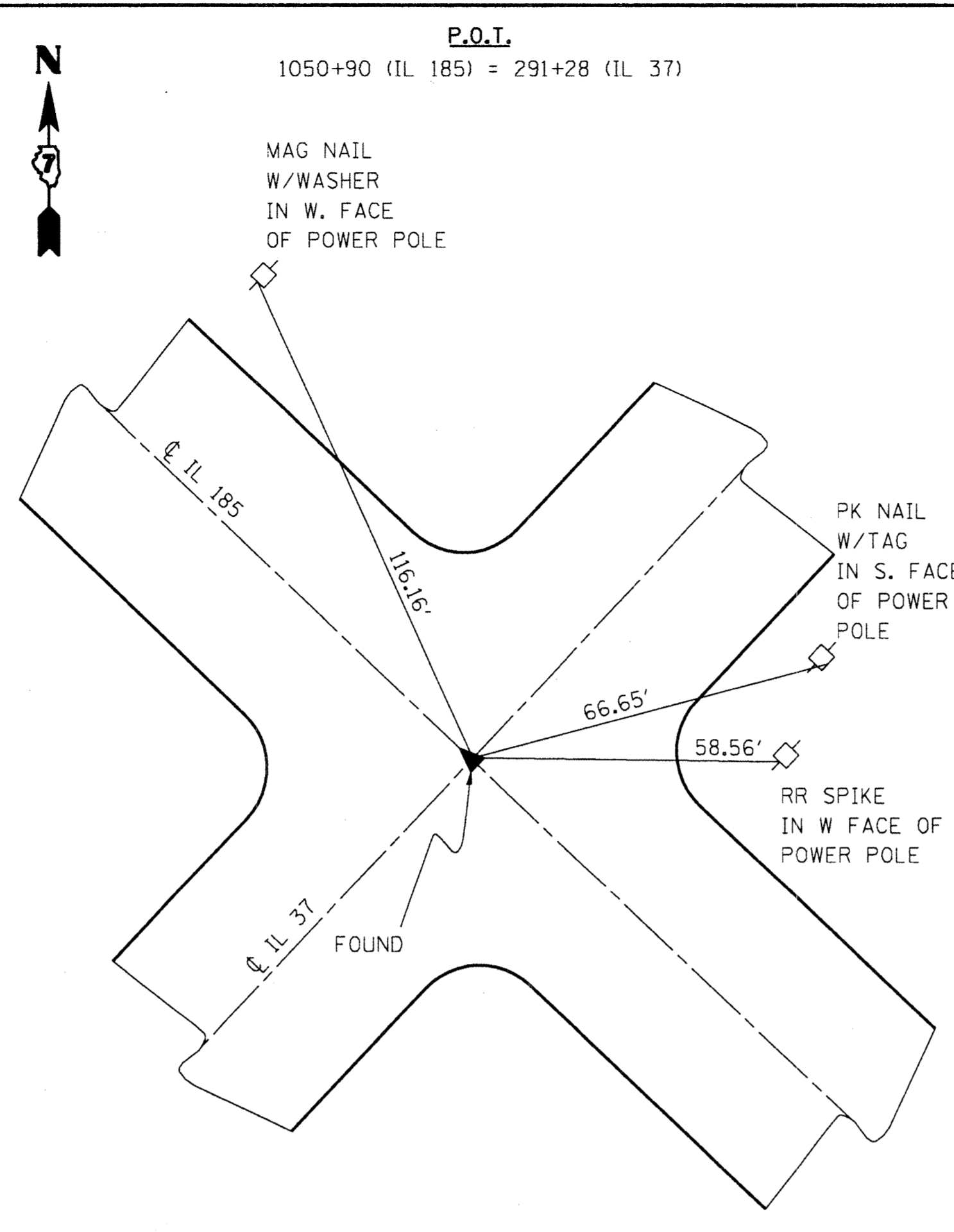
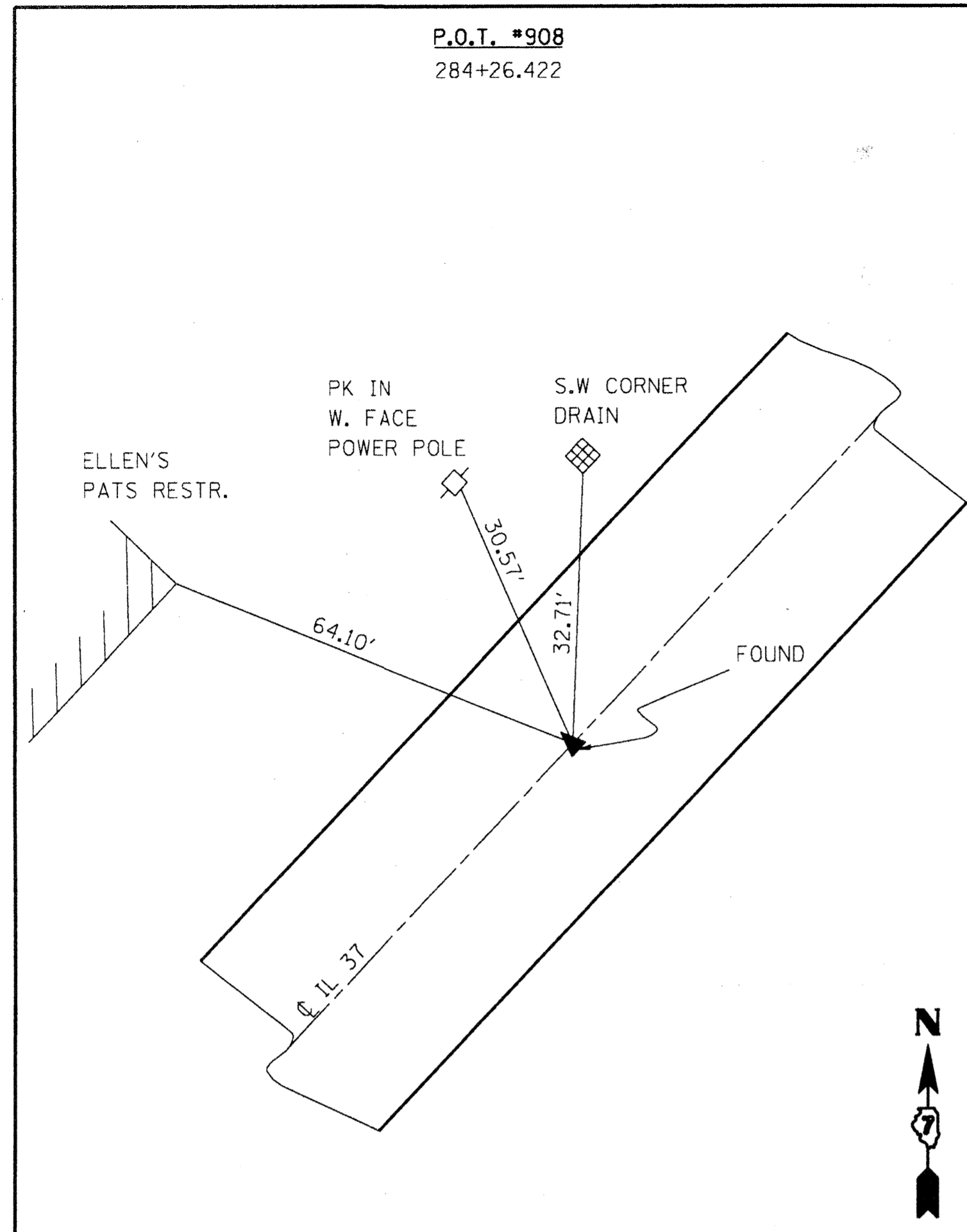


TRANSITION DETAIL
 STA 266+40 TO STA 267+20
 STA 295+60 TO STA 296+40
 STA 549+08 TO STA 549+88
 STA 564+74 TO STA 565+54
 STA 596+50 TO STA 597+30
 STA 623+02 TO STA 623+82
 STA 648+10 TO STA 646+90



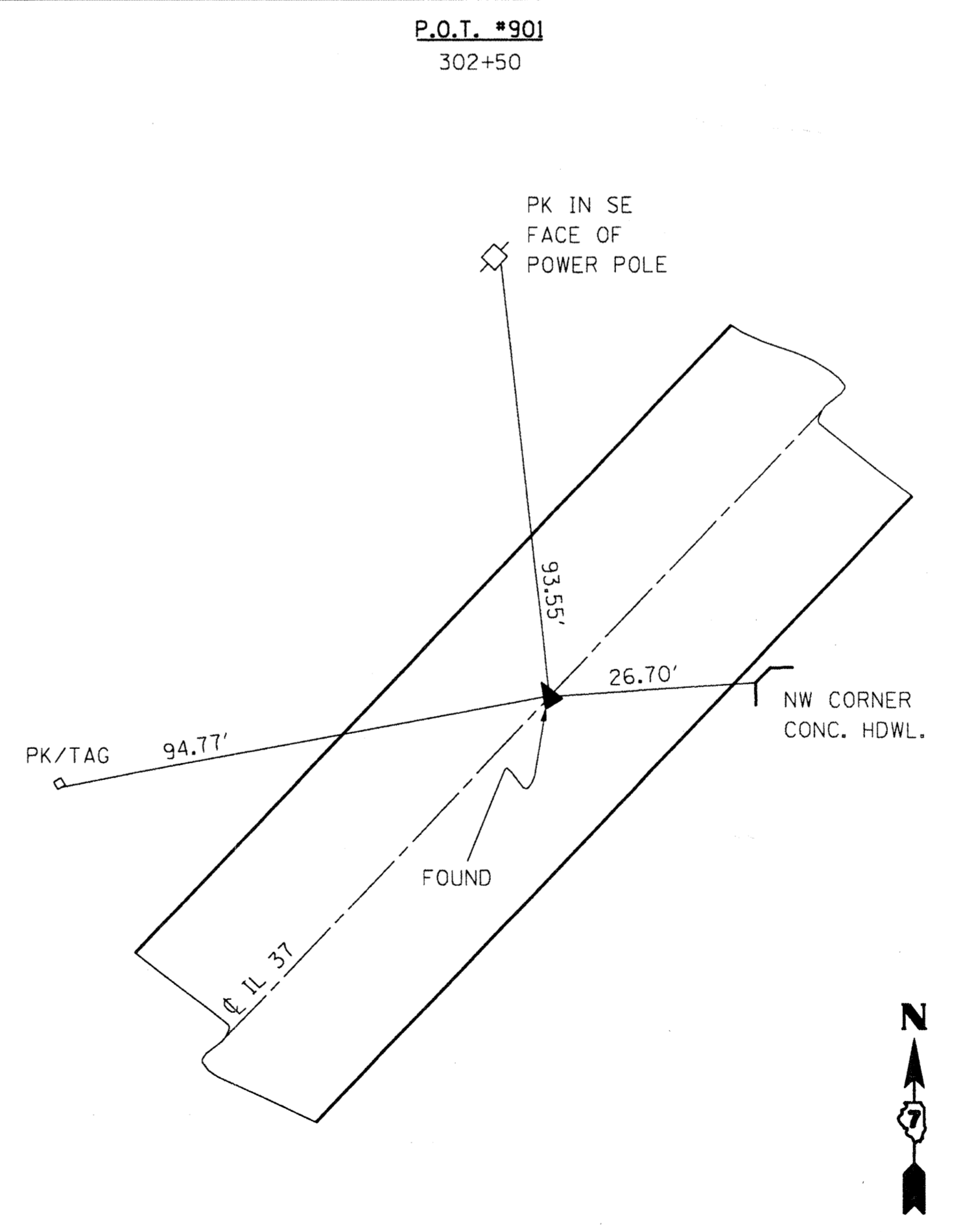
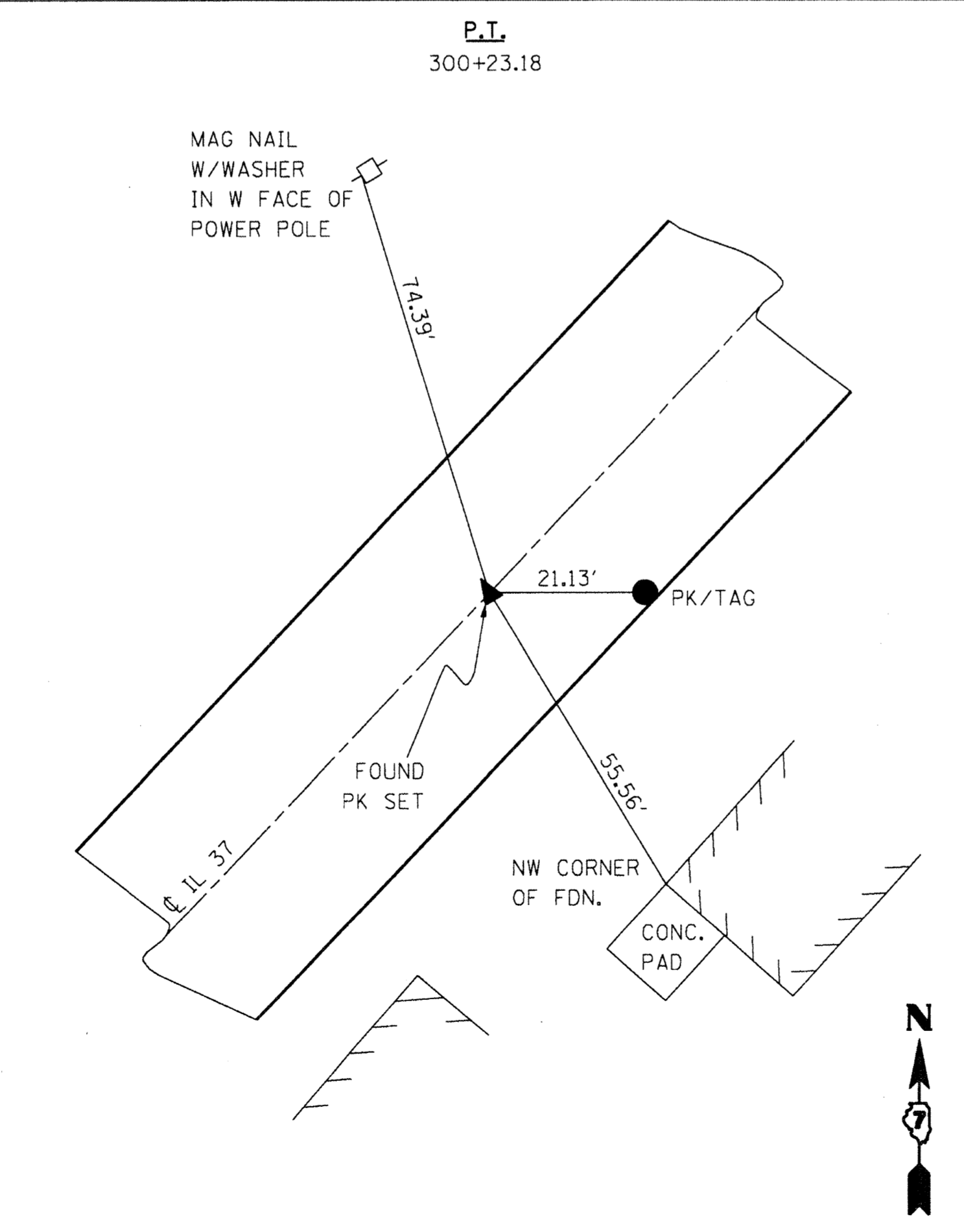
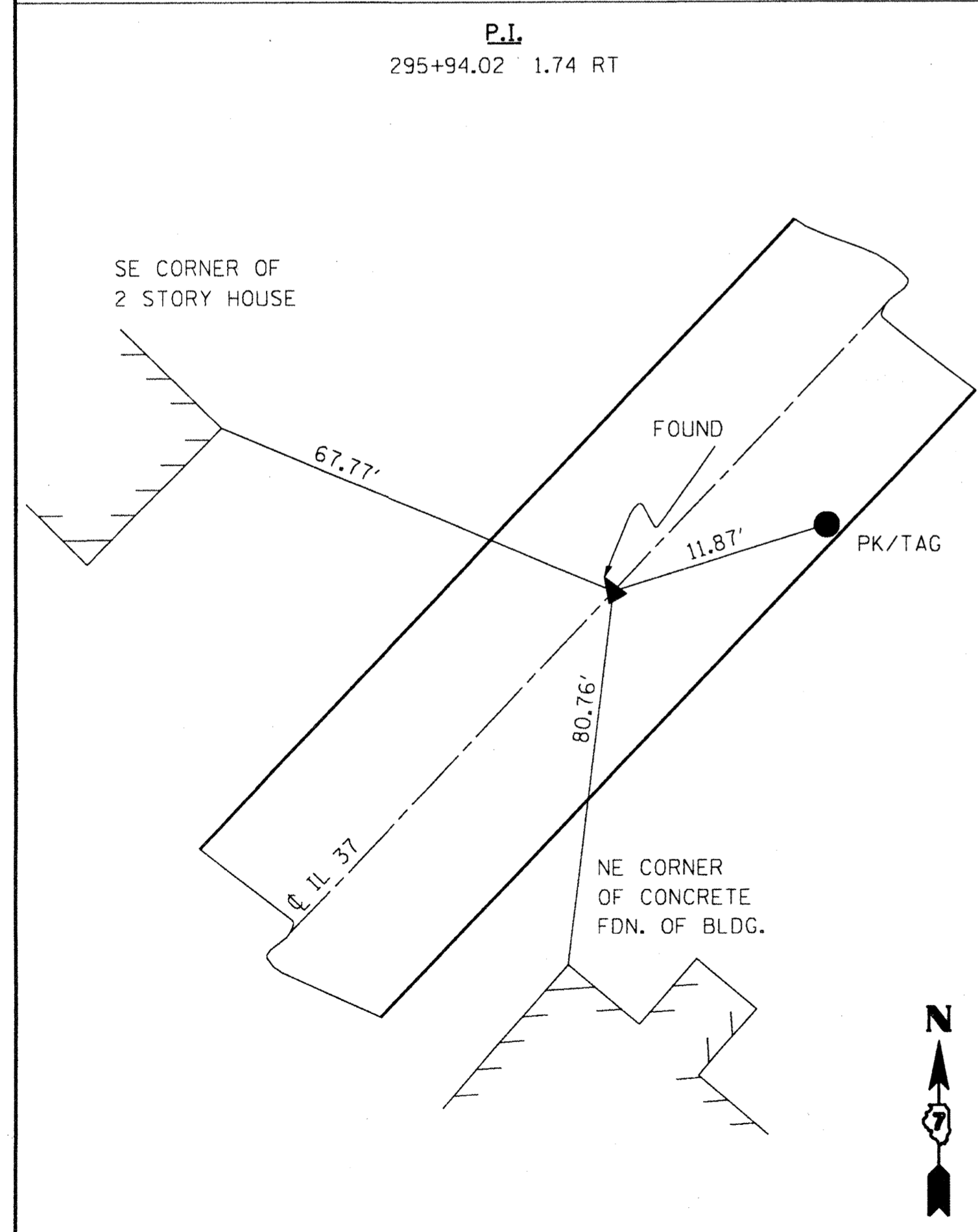
BUTT JOINT DETAIL
 STA 241+50 TO STA 241+80
 STA 579+49 TO STA 579+79
 STA 725+50 TO STA 725+80

FILE NAME =	USER NAME = toasleyck	DESIGNED -	REVISED -	STATE OF ILLINOIS DEPARTMENT OF TRANSPORTATION	TYPICALS & BUTT JOINT DETAIL			F.A.S. RTE.	SECTION	COUNTY	TOTAL SHEETS	SHEET NO.
or:\pwork\pwork\TEASLEYCK\00150346\074134-shr-typicals.dgn	74134-shr-typicals.dgn	DRAWN -	REVISED -		SCALE:	SHEET NO. OF SHEETS	STA. TO STA.	2701	(103.104)RS-4			5
	PLOT SCALE = 100.0000' / IN.	CHECKED -	REVISED -					CONTRACT NO. 74134				
	PLOT DATE = 1/25/2010	DATE -	REVISED -					ILLINOIS FED. AID PROJECT				



PERMANENT SURVEY MARKERS, TYPE 1

STATION	DESCRIPTION	QUANTITY
284+26.42	POT	1 EACH
291+28	POT	1 EACH
291+64.85	PI	1 EACH
295+94.02	PI	1 EACH
300+23.18	PT	1 EACH
302+50	POT	1 EACH
TOTAL		6 EACH



FILE NAME =	USER NAME = teasleyck	DESIGNED -	REVISED -
c:\pwork\PIWIDOT\TEASLEYCK\d0150346\0274134-sht-ties.dgn		DRAWN -	REVISED -
	PLOT SCALE = 100.0000' / IN.	CHECKED -	REVISED -
	PLOT DATE = 1/25/2010	DATE -	REVISED -

**STATE OF ILLINOIS
DEPARTMENT OF TRANSPORTATION**

SURVEY TIES

SCALE:	SHEET NO. OF SHEETS	STA. TO STA.
--------	---------------------	--------------

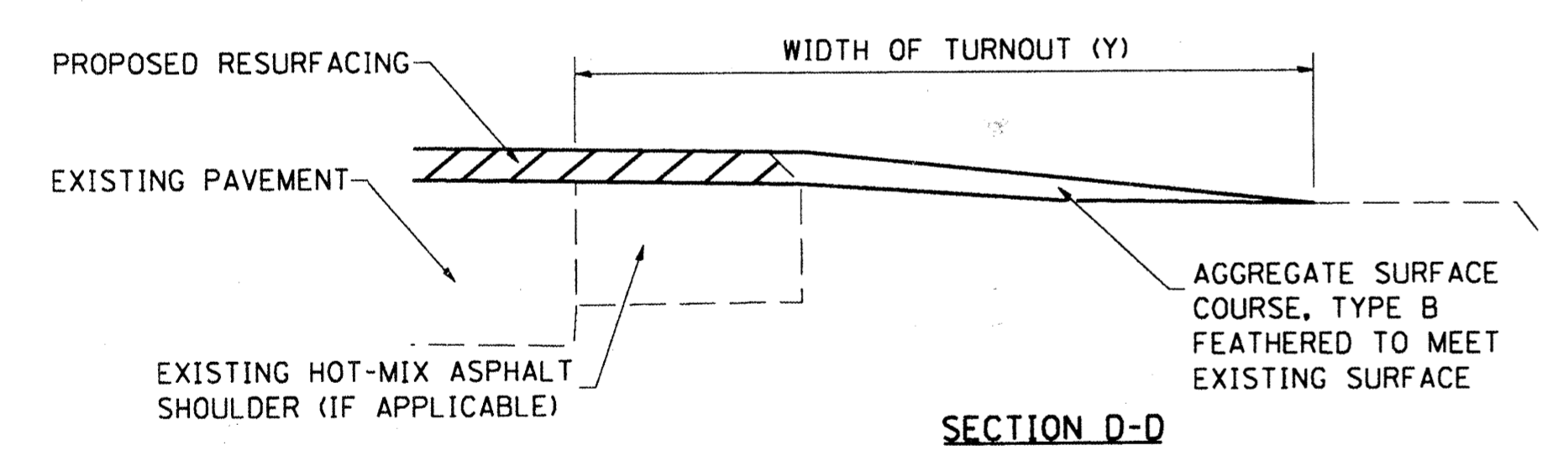
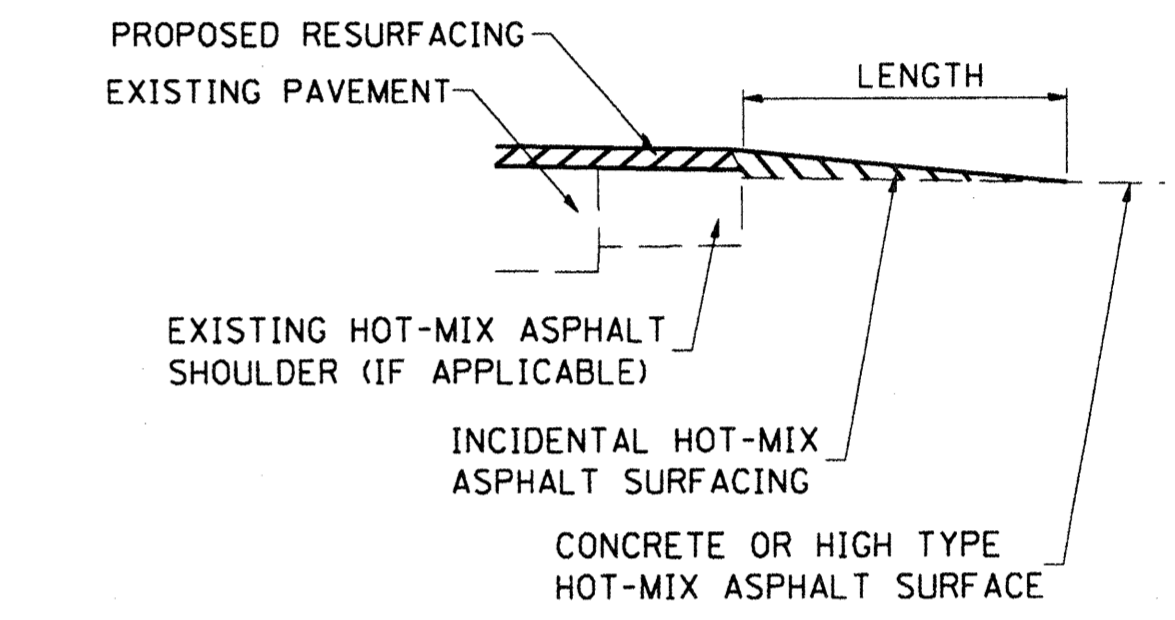
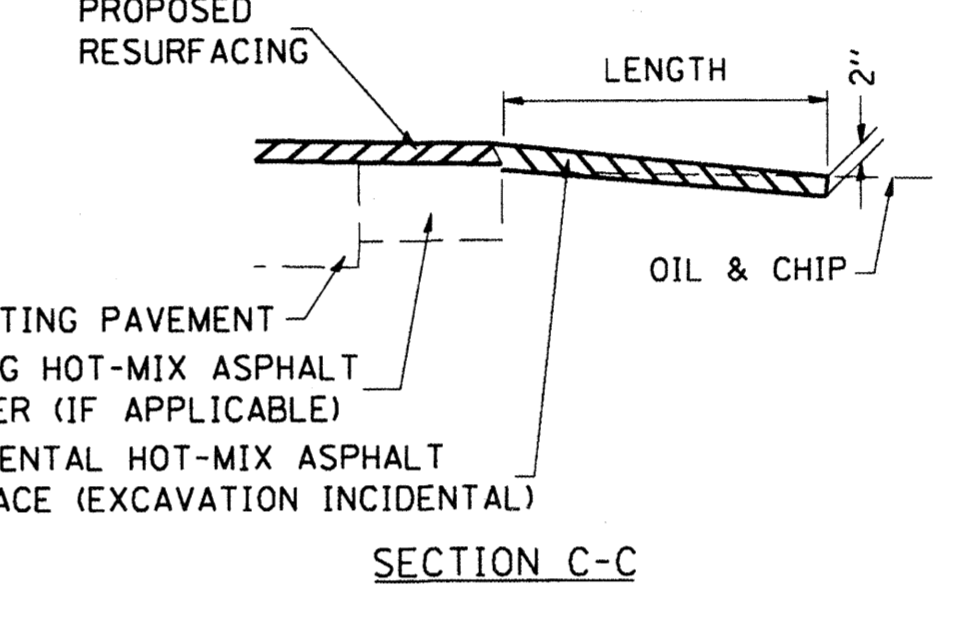
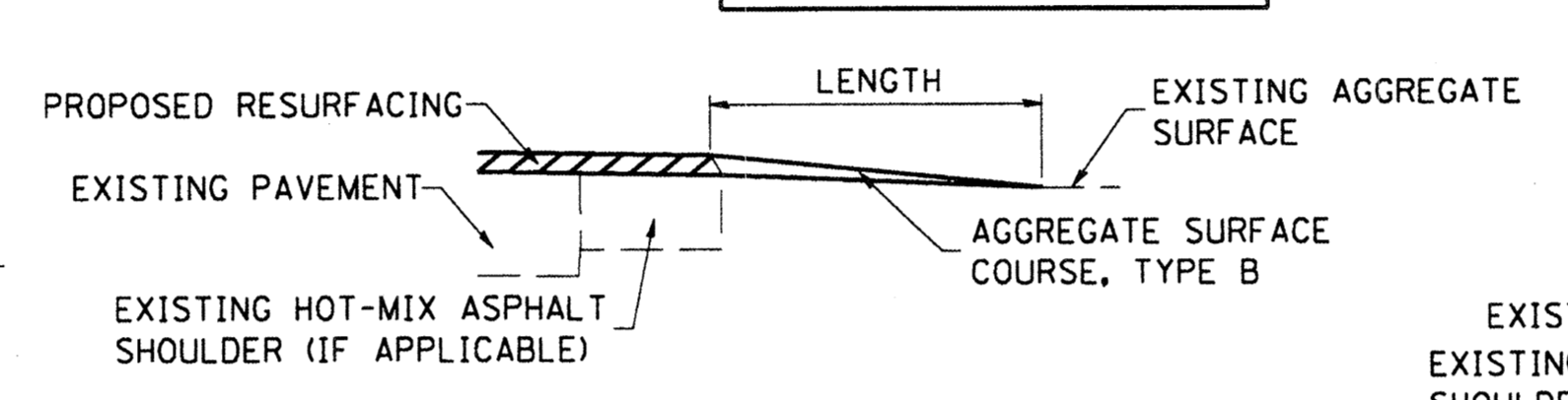
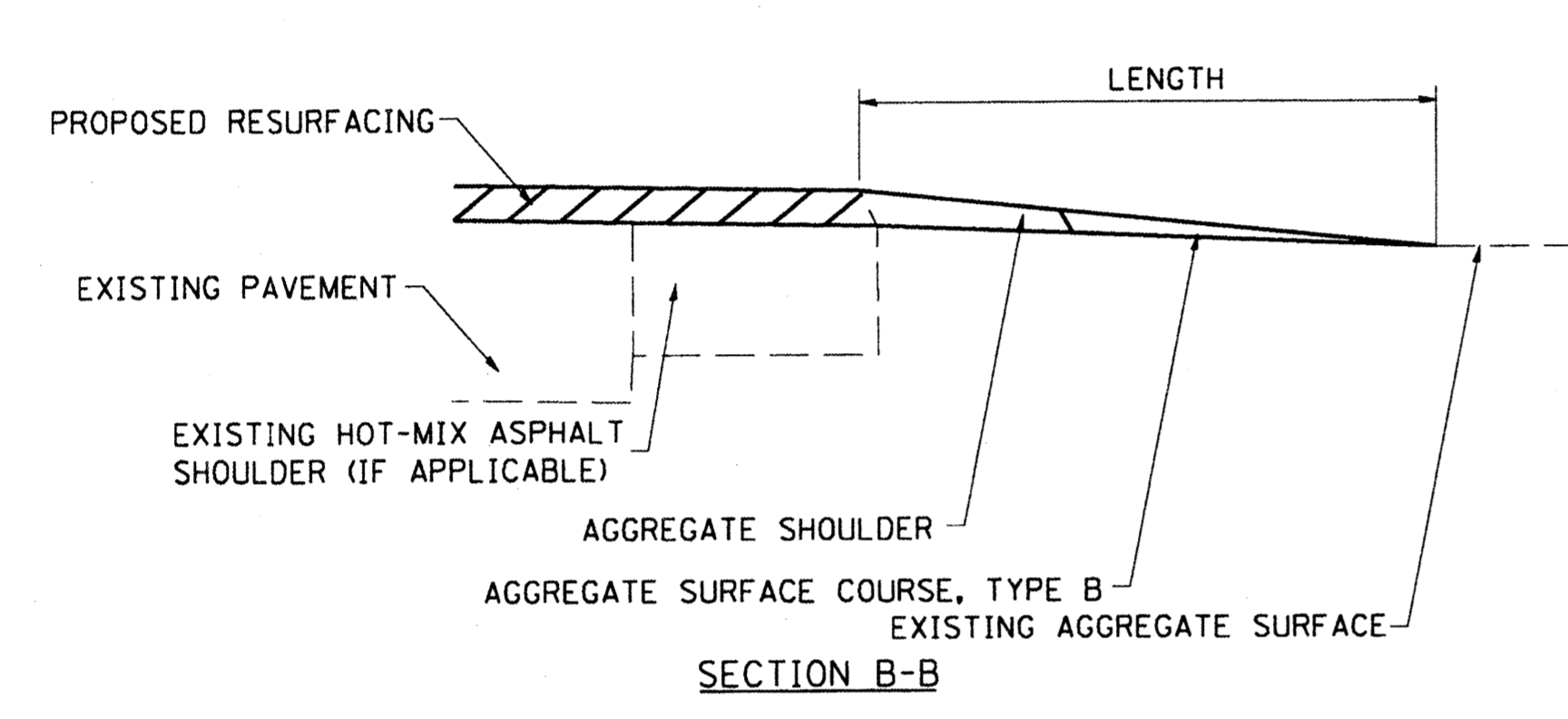
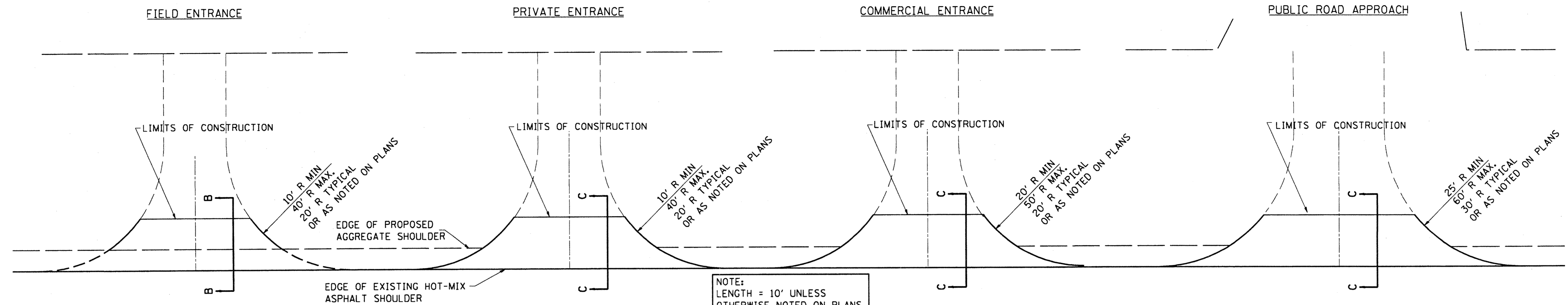
F.A.S. RTE.	SECTION	COUNTY	TOTAL SHEETS	SHEET NO.
2701	(103,104)RS-4			6
CONTRACT NO. 74134			ILLINOIS FED. AID PROJECT	

RESURFACING SCHEDULE

STATION TO STATION	LENGTH	AVERAGE PAVEMENT WIDTH	AREA	HOT-MIX ASPHALT SURFACE REMOVAL, 1/2"	BITUMINOUS MATERIALS (PRIME COAT)	AGGREGATE (PRIME COAT)	HOT-MIX ASPHALT SURFACE COURSE, MIX "C", N70	AGGREGATE SHOULDERS, TYPE B	HOT-MIX ASPHALT SURFACE REMOVAL - BUTT JOINT	TEMPORARY RAMP	HOT-MIX ASPHALT SURFACE REMOVAL, 1 1/2"
	FOOT	FOOT	SQ YD	SQ YD	GALLON	TON	TON	TON	SQ YD	SQ YD	SQ YD
241+50.00 TO 241+80.00	30.0	27.0	90.0	0.0	9.0	0.2	7.6	1.3	90.0	15.0	0.0
241+80.00 TO 266+40.00	2460.0	27.0	7380.0	7380.0	738.0	14.8	619.9	105.1	0.0	0.0	0.0
266+40.00 TO 267+20.00	80.0	27.0	240.0	0.0	24.0	0.5	20.2	3.4	0.0	0.0	0.0
267+20.00 TO 275+15.00	795.0	27.0	2385.0	0.0	238.5	4.8	200.3	0.0	0.0	0.0	2385.0
275+15.00 TO 278+83.00	368.0	32.0	1308.4	0.0	130.8	2.6	109.9	0.0	0.0	0.0	1308.4
278+83.00 TO 279+49.00	66.0	27.0	198.0	0.0	19.8	0.4	16.6	0.0	0.0	0.0	198.0
279+49.00 TO 282+29.00	280.0	33.0	1026.7	0.0	102.7	2.1	86.2	0.0	0.0	0.0	1026.7
282+29.00 TO 295+60.00	1331.0	27.0	3993.0	0.0	399.3	8.0	335.4	0.0	0.0	0.0	3993.0
295+60.00 TO 296+40.00	80.0	27.0	240.0	0.0	24.0	0.5	20.2	3.4	0.0	0.0	0.0
296+40.00 TO 530+00.00	23360.0	27.0	70080.0	70080.0	7008.0	140.2	5886.7	997.7	0.0	0.0	0.0
530+00.00 TO 549+08.00	1908.0	26.0	5512.0	5512.0	551.2	11.0	463.0	81.5	0.0	0.0	0.0
549+08.00 TO 549+88.00	80.0	26.0	231.1	0.0	23.1	0.5	19.4	3.4	0.0	0.0	0.0
549+88.00 TO 564+74.00	1486.0	24.0	3962.7	0.0	396.3	7.9	332.9	0.0	0.0	0.0	3962.7
564+74.00 TO 565+54.00	80.0	26.0	231.1	0.0	23.1	0.5	19.4	3.4	0.0	0.0	0.0
565+54.00 TO 579+49.00	1395.0	26.0	4030.0	4030.0	403.0	8.1	338.5	59.6	0.0	0.0	0.0
579+49.00 TO 579+79.00	30.0	26.0	86.7	0.0	8.7	0.2	7.3	1.3	86.7	14.4	0.0
579+79.00 TO 581+51.00	172.0	0.0	0.0	0.0	0.0	0.0	0.0	0.0	0.0	0.0	0.0
581+51.00 TO 584+87.00	336.0	26.0	970.7	0.0	97.1	1.9	81.5	0.0	0.0	14.4	970.7
584+87.00 TO 596+50.00	1163.0	24.0	3101.3	0.0	310.1	6.2	260.5	0.0	0.0	0.0	3101.3
596+50.00 TO 597+30.00	80.0	26.0	231.1	0.0	23.1	0.5	19.4	3.4	0.0	0.0	0.0
597+30.00 TO 606+17.00	887.0	26.0	2562.4	2562.4	256.2	5.1	215.2	37.9	0.0	0.0	0.0
606+17.00 TO 623+02.00	1685.0	26.0	4867.8	4867.8	486.8	9.7	408.9	72.0	0.0	0.0	0.0
623+02.00 TO 623+82.00	80.0	26.0	231.1	0.0	23.1	0.5	19.4	3.4	0.0	0.0	0.0
623+82.00 TO 646+10.00	2228.0	24.0	5941.3	0.0	594.1	12.9	540.7	0.0	0.0	0.0	5941.3
646+10.00 TO 646+90.00	80.0	26.0	231.1	0.0	23.1	0.4	17.9	3.4	0.0	0.0	0.0
646+90.00 TO 696+50.00	4960.0	26.0	14328.9	14328.9	1432.9	28.7	1203.6	211.8	0.0	0.0	0.0
696+50.00 TO 725+50.00	2900.0	26.0	8377.8	8377.8	837.8	16.8	703.7	123.9	0.0	0.0	0.0
725+50.00 TO 725+80.00	30.0	26.0	86.7	0.0	8.7	0.2	7.3	1.3	86.7	14.4	0.0
TOTALS	48430.0		141925.0	117139.0	14193.0	285.0	11962.0	1717.0	263.0	58.0	22887.0

PAVEMENT MARKING SCHEDULE

STATION TO STATION	LENGTH	PAINT PAVEMENT MARKING - LINE 4"	SHORT-TERM PAVEMENT MARKING	WORK ZONE PAVEMENT MARKING REMOVAL	RAISED REFLECTIVE PAVEMENT MARKER
	FOOT	FOOT	FOOT	SQ FT	EACH
241+50.00 TO 579+79.00	33829.0	79058.3	6768.0	1128.0	423.0
579+79.00 TO 581+51.00	172.0	387.0	32.0	5.3	0.0
581+51.00 TO 606+17.00	2466.0	5548.5	496.0	82.7	31.0
606+17.00 TO 696+50.00	9033.0	23426.3	1808.0	301.3	113.0
696+50.00 TO 725+80.00	2930.0	6592.5	584.0	97.3	37.0
TOTALS		115013.0	9688.0	1615.0	604.0



TYPICAL SECTION AT MAILBOX TURNOUT
NOTE: SEE STANDARD 406201 FOR MAILBOX TURNOUT DETAILS

NOTES

THE COST OF THE ASPHALT MATERIALS, AND AGGREGATE (PRIME COAT) FOR ENTRANCES AND PUBLIC ROADS AND APPROACHES SHALL BE INCLUDED IN THE PAY ITEM INCIDENTAL HOT-MIX ASPHALT SURFACING.

THE COST OF EXCAVATION IS INCLUDED IN THE PAY ITEM INCIDENTAL HOT-MIX ASPHALT SURFACING.

IF THERE IS NOT EXISTING HOT-MIX ASPHALT SHOULDER THEN THE ENTRANCE TAPER STARTS AT THE EDGE OF EXISTING PAVEMENT.

THE COST OF THE BITUMINOUS MATERIALS AND AGGREGATE (PRIME COAT) FOR ENTRANCES AND PUBLIC ROAD APPROACHES SHALL BE INCLUDED IN THE PAY ITEM INCIDENTAL HOT-MIX ASPHALT SURFACING.

SIDE	STATION	TYPE	INCIDENTAL HOT-MIX ASPHALT SURFACING	
			TON	TON
L+	241+00	PE	2.1	
L+	242+00	PE	2	
L+	251+13	CE	2.5	
L+	254+42	CE	2.6	
L+	256+26	CE	3.2	
L+	262+60	CE	1.2	
L+	263+54	CE	1.2	
R+	263+59	CE		1.3
R+	265+21	CE		1.1
R+	297+30	CE	1.9	
R+	298+03	CE		2.4
L+	296+68	CE	4.1	
R+	300+63	CE	1.9	
R+	302+00	FE		1.9
L+	314+15	FE		0.9
R+	318+25	PRA	3.4	
L+	334+75	PRA	4.3	
L+	396+65	PRA	2.3	
L+	409+40	PE	1.3	
L+	409+76	MBT		2.5
L+	413+03	PRA	1.6	

SIDE	STATION	TYPE	INCIDENTAL HOT-MIX ASPHALT SURFACING	
			TON	TON
L+	413+27	MBT		1.8
L+	415+14	PE	1.5	
L+	419+00	PE	1.1	
L+	419+17	MBT		0.5
L+	426+43	PE		0.9
L+	433+13	PE		0.9
L+	437+67	PE	1.4	
R+	448+97	PE	1.1	
L+	451+21	PRA	1.1	
L+	455+40	MBT		1.8
L+	455+65	PE	1.1	
L+	470+42	PRA	2	
R+	471+00	PE	1.9	
L+	490+23	FE	1	
L+	512+07	PRA	1.4	
L+	514+40	PE		2.6
L+	518+72	PRA	2.9	
R+	518+78	PRA	3.3	
L+	520+98	PE	1.5	
L+	521+80	PE	1.5	
L+	522+26	MBT		2.4

SIDE	STATION	TYPE	INCIDENTAL HOT-MIX ASPHALT SURFACING	
			TON	TON
L+	524+10	PRA	1	
L+	524+63	PE	5.2	
L+	527+73	PE	1.1	
R+	528+19	PE		0.9
L+	528+84	PRA	1.4	
L+	530+86	PE	0.9	
L+	535+40	PE	1	
L+	535+55	MBT		1.7
L+	536+92	MBT	1.1	
L+	537+05	PE	1.1	
L+	538+27	PE	1	
L+	540+02	PE	1	
L+	540+52	MBT		3.1
L+	540+92	PE	1.1	
L+	542+83	PE		1.3
L+	543+05	MBT		1.7
L+	549+25	PE	2.2	
L+	570+30	PE		1.4
R+	570+30	PE		1.4
L+	570+25	MBT		3.5
L+	570+50	PE		1.5

SIDE	STATION	TYPE	INCIDENTAL HOT-MIX ASPHALT SURFACING	
			TON	TON
L+	597+15	MBT		3.1
L+	597+25	PE		1.4
L+	611+44	PE	1.8	
L+	619+94	PE	1.6	
L+	620+14	MBT		1.7
L+	651+72	PE	1	
L+	652+00	MBT		1.8
L+	653+08	PE	0.9	
L+	693+95	MBT		1.4
L+	694+15	PE	0.9	
L+	697+29	PRA	2.2	
R+	698+60	PRA	2	
L+	702+09	PE	1.1	
L+	702+25	MBT		1.4
L+	703+30	PE	1.2	
L+	703+45	MBT		1.4
L+	704+39	PE		1.2
L+	711+71	PE	1.1	
L+	713+55	PE	2.1	
L+	714+39	PE	1.6	
L+	715+90	PE		2.1

SIDE	STATION	TYPE	INCIDENTAL HOT-MIX ASPHALT SURFACING	
			TON	TON
L+	718+47	PE	2.4	
R+	718+47	PE	1.8	
R+	719+37	PE	2.3	
L+	722+16	PRA		2.5
L+	723+33	MBT		1.7
L+	723+50	PE	1.1	
L+	724+00	PE	0.7	
L+	724+74	PE	0.8	
L+	725+04	MBT		1.3
L+	725+23	PE	1	
TOTALS			104	58

FE=FIELD ENTRANCE PRA - PUBLIC ROAD APPROACH
PE=PRIVATE ENTRANCE MBT - MAILBOX TURNOUT
CE=COMMERCIAL ENTRANCE

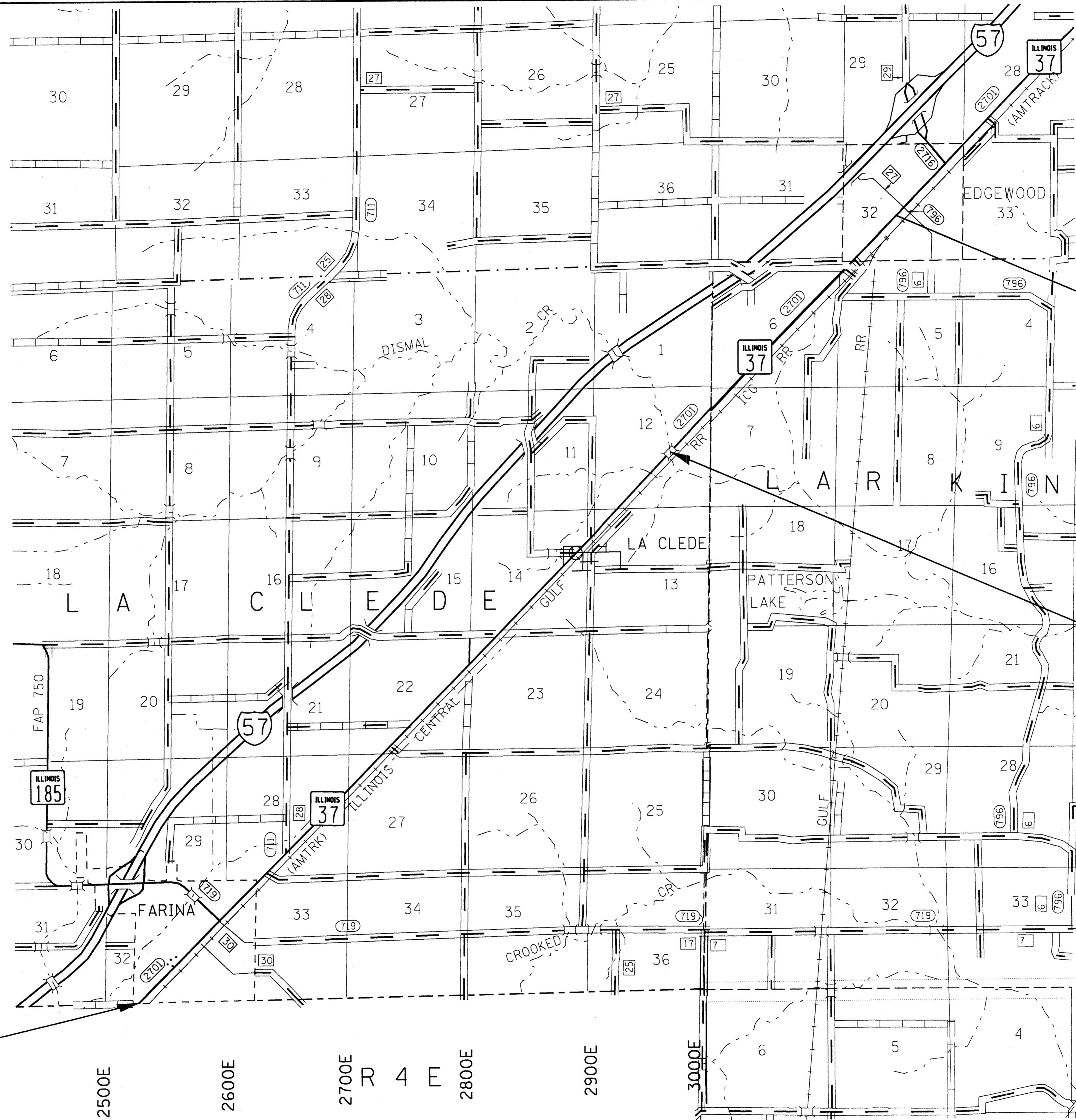
FILE NAME =	USER NAME = teasleyck	DESIGNED - 08-03-99	REVISED - 03-13-07
as:\pw_work\pwidot\teasleyck\d0150346\074134-shr-schedules.dgn		DRAWN -	REVISED -
		CHECKED -	REVISED -
		DATE -	REVISED -

**STATE OF ILLINOIS
DEPARTMENT OF TRANSPORTATION**

RURAL ENTRANCE SCHEDULE AND MAILBOX TURNOUT DETAILS WITH SHOULDERS				
SCALE:	SHEET NO.	OF SHEETS	STA.	TO STA.

F.A.S. RTE.	SECTION	COUNTY	TOTAL SHEETS	SHEET NO.
2701	(103,104)RS-4		8	8
FED. ROAD DIST. NO.			ILLINOIS FED. AID PROJECT	
			CONTRACT NO. 74134	

• Effingham, Fayette, & Clay



**PROJECT ENDS
STA 725+80**

**BRIDGE OMISSION
STA 579+79 TO STA 581+51**

**PROJECT BEGINS
STA 241+50**

2500E

2600E

2700E

R 4 E

2800E

2900E

3000E

FILE NAME :
c:\pwwork\pwwid01\TEASLEYCK\0150346\0150346.dwg

USER NAME : teasleyck
74134-sht-cover.dgn
PLOT SCALE = 100.0000' / IN.
PLOT DATE = 1/25/2010

DESIGNED -
DRAWN -
CHECKED -
DATE -

REVISED -
REVISED -
REVISED -
REVISED -

**STATE OF ILLINOIS
DEPARTMENT OF TRANSPORTATION**

LOCATION MAP

SCALE: SHEET NO. OF SHEETS STA. TO STA.

F.A.S. RTE.	SECTION	COUNTY	TOTAL SHEETS	SHEET NO.
2701	(103.104)RS-4			9
ILLINOIS FED. AID PROJECT			CONTRACT NO. 74134	

• Effingham, Fayette, & Clay