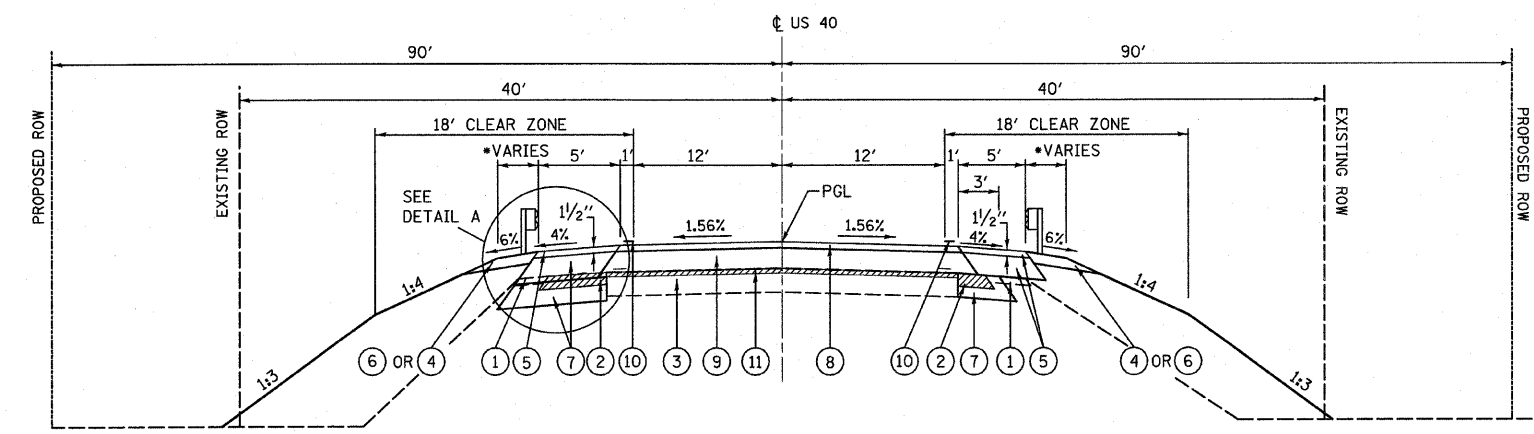


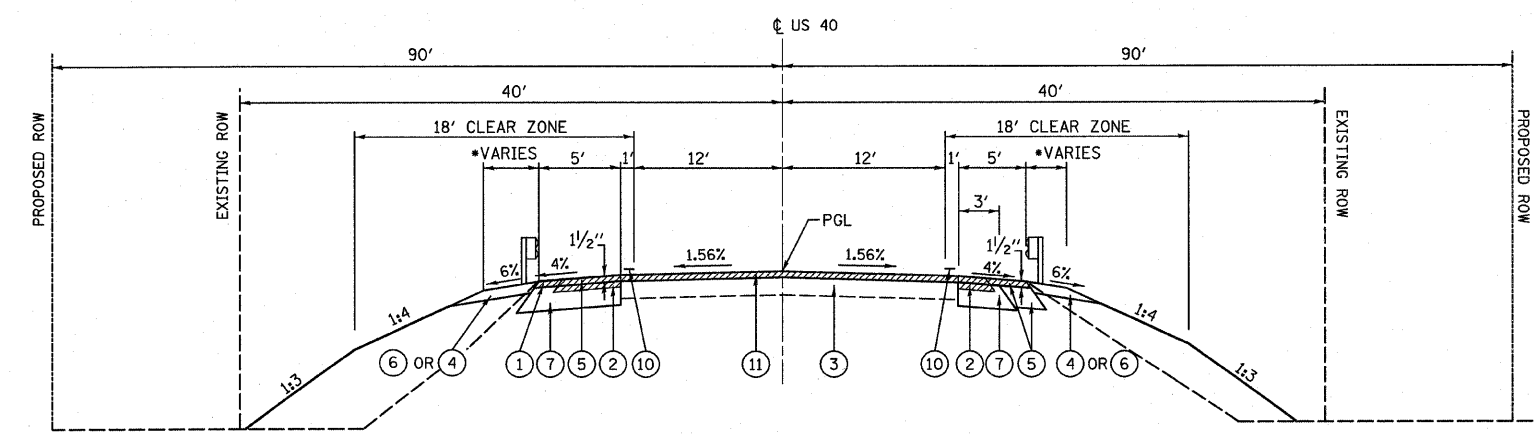
•NOTE:
EX LANE WIDTH IS 12' & EX PAVED
SHOULDER WIDTH IS 4' FROM:
STA 48+42.28 TO 49+48.90 LT
STA 48+42.29 TO 49+49.46 RT
STA 53+75.60 TO STA 54+65.15 LT
STA 53+75.60 TO STA 54+65.15 RT

EXISTING TYPICAL SECTION
US ROUTE 40
(NOT TO SCALE)
STA. 45+98.00 TO STA. 49+19.46
STA. 53+57.04 TO STA. 56+79.00



•NOTE: AGGREGATE SHOULDER SHALL BE 2'-0"
WIDE WHERE GUARD RAIL IS NOT REQUIRED.
BITUMINOUS SHOULDER STABILIZATION SHALL BE
3'-0" WIDE WHERE GUARD RAIL IS REQUIRED

PROPOSED TYPICAL SECTION
US ROUTE 40
(NOT TO SCALE)
STA. 47+42.38 TO STA. 49+15.50
OMISSION STA. 49+15.50 TO STA. 53+68.50
STA. 53+68.50 TO STA. 55+21.42

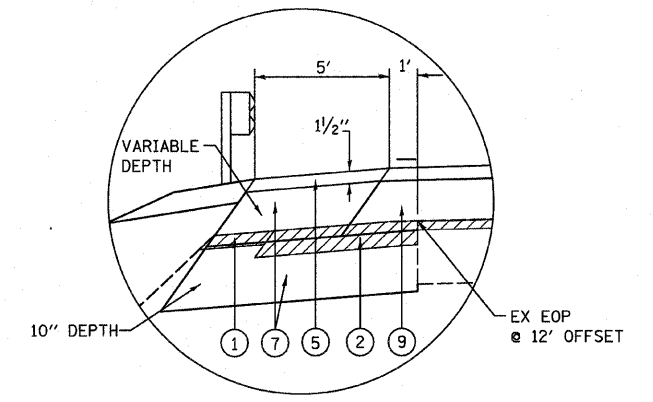


•NOTE: AGGREGATE SHOULDER SHALL BE 2'-0"
WIDE WHERE GUARD RAIL IS NOT REQUIRED.
BITUMINOUS SHOULDER STABILIZATION SHALL BE
3'-0" WIDE WHERE GUARD RAIL IS REQUIRED

PROPOSED TYPICAL SECTION
US ROUTE 40
(NOT TO SCALE)
STA. 46+00.00 TO STA. 47+42.38
STA. 55+21.42 TO STA. 56+69.00

- LEGEND**
- ① EXISTING AGGREGATE SHOULDER
 - ② EXISTING PAVED SHOULDER
 - ③ EXISTING PAVEMENT
 - ④ PROPOSED AGGREGATE SHOULDERS, TYPE B, 8"
 - ⑤ PROPOSED HOT-MIX ASPHALT SHOULDERS, VARIABLE DEPTH
 - ⑥ PROPOSED BITUMINOUS STABILIZATION 6" AT STEEL PLATE BEAM GUARD RAIL
 - ⑦ PROPOSED BASE COURSE WIDENING, VARIABLE DEPTH (10" MIN. UNDER TRAFFIC)
 - ⑧ PROPOSED HOT-MIX ASPHALT SURFACE COURSE, MIX "C", N70 1/2"
 - ⑨ PROPOSED HOT-MIX ASPHALT BINDER COURSE, IL-19.0, N70, VARIABLE DEPTH
 - ⑩ PROPOSED FINAL PAVEMENT MARKING
 - ⑪ PROPOSED HOT-MIX ASPHALT SURFACE REMOVAL, 1/2"

TO BE REMOVED



DETAIL A
STA 48+42.28 TO STA 49+15.50 LEFT
STA 53+68.50 TO STA 54+65.15 LEFT
EX PAVEMENT NARROWS TO 12' LANES APPROACHING THE
EXISTING STRUCTURE.
TO PROVIDE A STABLE BASE FOR PROPOSED PAVEMENT
STRUCTURE, WIDEN LEFT SIDE DURING STAGE 1
(SEE CROSS SECTIONS):

HMA MIXTURE REQUIREMENTS

	HMA BINDER COURSE	HMA SURFACE COURSE	BASE COURSE WIDENING	HMA SHOULDERS
PG GRADE	PG64-22	PG64-22	PG64-22	PG58-22
DESIGN AIR Voids	4.0% @ N70	4.0% @ N70	4.0% @ N70	4.0% @ N30 (TOP LIFT) 4.0% @ N70 (BOTTOM LIFT)
MIXTURE COMPOSITION	IL-19.0	IL-9.5	IL-19.0	IL-9.5 (TOP LIFT) IL-19.0 (BOTTOM LIFT)
FRICTION AGGREGATE		MIXTURE C		MIX C (TOP LIFT)

FILE NAME =	USER NAME = default	DESIGNED -	REVISED -
H:\P\27834\07end8\Microstation\CADDShets\0774235-sh1-typico1.dgn		DRAWN -	REVISED -
PLOT SCALE = 20.0000' / IN.		CHECKED -	REVISED -
PLOT DATE = 9/25/2009		DATE -	REVISED -

STATE OF ILLINOIS
DEPARTMENT OF TRANSPORTATION

TYPICAL SECTIONS

SCALE:	SHEET NO.	OF SHEETS	STA.	TO STA.
--------	-----------	-----------	------	---------

F.A.P. RTE.	SECTION	COUNTY	TOTAL SHEETS	SHEET NO.
752	(U-2BR)B-1	FAYETTE	71	04
FED. ROAD DIST. NO. ILLINOIS FED. AID PROJECT			CONTRACT NO. 74235	