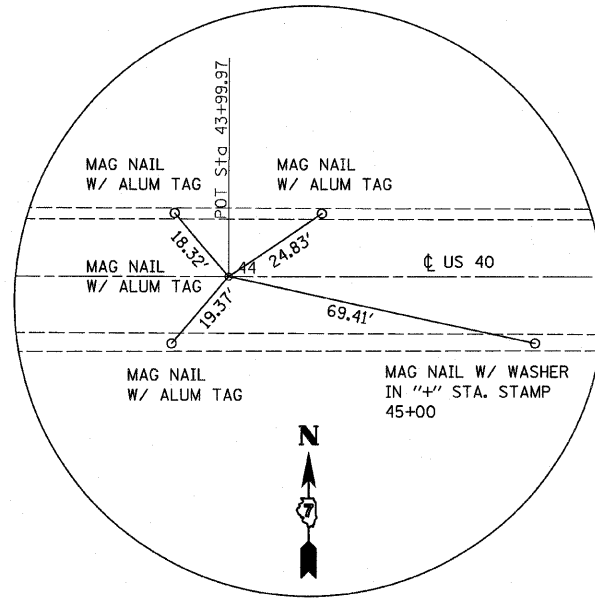
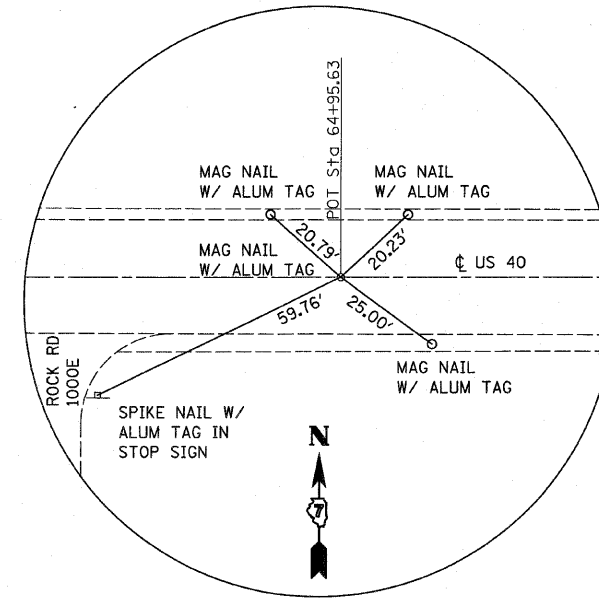


P.O.T. STA. 32+00.00  
 N 836,407.42  
 E 772,673.76



P.O.T. STA. 43+99.97  
 N 836,486.47  
 E 773,871.12



P.O.T. STA. 64+95.63  
 N 836,627.34  
 E 775,962.04

FILE NAME =	USER NAME = default	DESIGNED -	REVISED -	<b>STATE OF ILLINOIS DEPARTMENT OF TRANSPORTATION</b>	<b>ALIGNMENT, TIES &amp; BENCHMARKS</b>	F.A.P. RTE.	SECTION	COUNTY	TOTAL SHEETS	SHEET NO.	
H:\P\27834\W07and8\Motorstation\CADDShets\0774235-sh1-atb.dgn	PLOT SCALE = 20.0000' / IN.	CHECKED -	REVISED -			752	(U-2BR)B-1	FAYETTE	71	06	
PLOT DATE = 9/25/2009	DATE -	REVISED -				CONTRACT NO. 74235					
						FED. ROAD DIST. NO. [ILLINOIS] FED. AID PROJECT					