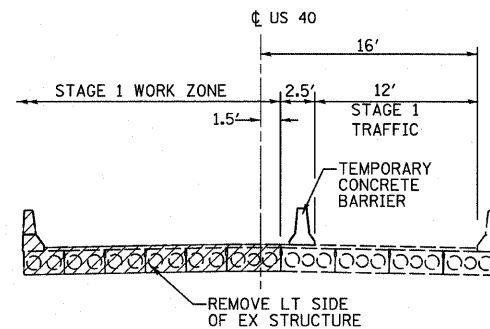


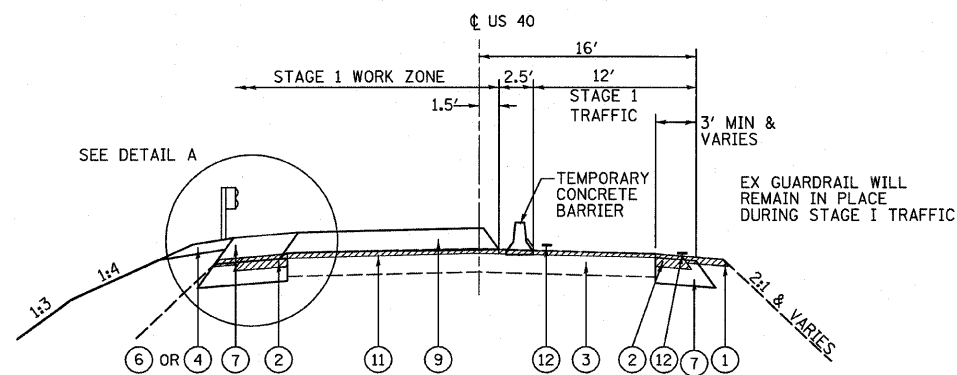
LEGEND

- ① EXISTING AGGREGATE SHOULDER
- ② EXISTING PAVED SHOULDER
- ③ EXISTING PAVEMENT
- ④ PROPOSED AGGREGATE SHOULDERS, TYPE B, 8"
- ⑤ PROPOSED HOT-MIX ASPHALT SHOULDERS
- ⑥ PROPOSED BITUMINOUS STABILIZATION 6" AT STEEL PLATE BEAM GUARD RAIL
- ⑦ PROPOSED BASE COURSE WIDENING, VARIABLE DEPTH (10" MIN. UNDER TRAFFIC)
- ⑧ PROPOSED HOT-MIX ASPHALT SURFACE COURSE, MIX "C", N70 1 1/2"
- ⑨ PROPOSED HOT-MIX ASPHALT BINDER COURSE, IL-19.0, N70, VARIABLE DEPTH
- ⑩ PROPOSED FINAL PAVEMENT MARKING
- ⑪ PROPOSED HOT-MIX ASPHALT SURFACE REMOVAL, 1/2"
- ⑫ PROPOSED TEMPORARY PAVEMENT MARKING

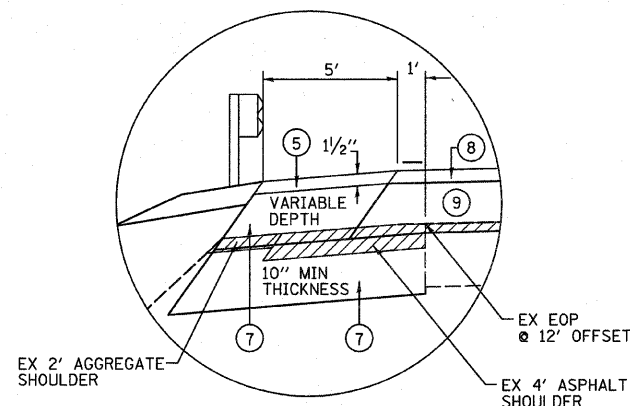
TO BE REMOVED



STAGE 1 BRIDGE CONSTRUCTION



STAGE 1 ROADWAY CONSTRUCTION



DETAIL A

STA 48+42.28 TO STA 49+15.50 LEFT
STA 53+68.50 TO STA 54+65.15 LEFT

EX PAVEMENT NARROWS TO 12' LANES APPROACHING THE EXISTING STRUCTURE.

TO PROVIDE A STABLE BASE FOR PROPOSED PAVEMENT STRUCTURE, WIDEN LEFT SIDE DURING STAGE 1 (SEE CROSS SECTIONS):

STAGE CONSTRUCTION GENERAL NOTES

1. ONE LANE OF TRAFFIC ON US ROUTE 40 SHALL BE MAINTAINED AT ALL TIMES.
2. ADVANCED WARNING SIGNS, TEMPORARY RUMBLE STRIPS, VERTICAL PANELS, PAVEMENT MARKERS, AND BARRICADE REFLECTORS SHALL BE LOCATED IN ACCORDANCE WITH TRAFFIC CONTROL AND PROTECTION STANDARD 701321.
3. INSTALL WIDTH RESTRICTION SIGNING.
4. INSTALL STOP SIGN AND NO LEFT TURN SIGN AT F.E. 44+65 IN LOCATION DETERMINED BY THE ENGINEER. THE COST SHALL BE INCLUDED IN THE UNIT PRICE FOR TRAFFIC CONTROL AND PROTECTION STANDARD 701321.
5. SEE SPECIAL PROVISIONS FOR ADDITIONAL INFORMATION.

SUGGESTED STAGE CONSTRUCTION

SUGGESTED STAGE 1

1. UTILIZING TRAFFIC CONTROL AND PROTECTION STANDARD 701306, COMPLETE HMA SURFACE REMOVAL FOR BOTH LANES OF US ROUTE 40 FROM STA. 46+00.00 TO STA. 49+12.50 AND STA. 53+71.50 TO STA. 56+69.00. DO NOT GRIND SURFACE ON EXISTING BRIDGE OR APPROACH SLABS.
2. UTILIZING TRAFFIC CONTROL AND PROTECTION STANDARD 701326, REMOVE PAVED SHOULDER AND CONSTRUCT THE BASE COURSE WIDENING ON THE RT SIDE OF THE ROADWAY FROM STA. 46+00.00 TO STA. 49+69.14 AND FROM STA. 53+37.35 TO STA. 56+69.00. THE PAVED SHOULDER REMOVAL INCLUDES THE COMPLETE REMOVAL OF THE EXISTING RT SIDE APPROACH SLAB SHOULDER OR AS DIRECTED BY THE ENGINEER.
3. UTILIZING FIELD ENTRANCE DETAIL ON SHEET 21 OF 71 AND TRAFFIC CONTROL AND PROTECTION STANDARDS 701006 & 701326, CONSTRUCT NEW AGGREGATE FIELD ENTRANCES AT STA 39+00.00 RT AND AT STA. 44+65.00 LT.
4. SET-UP STAGE 1 TRAFFIC CONTROL.
5. UTILIZING TRAFFIC CONTROL AND PROTECTION, STANDARD 701321 AS DETAILED ON SHEETS 11 THRU 13, DIRECT TRAFFIC TO THE RT LANE OF US ROUTE 40.
6. COMPLETE STAGE 1 REMOVAL OF THE EXISTING SUPERSTRUCTURE AND APPROACH SLABS AS DETAILED ON SHEETS 25 AND 26 OF 71.
7. INSTALL STAGE 1 TEMPORARY SHEET PILING AT ABUTMENTS AND PROPOSED PIER 2 AS DETAILED ON SHEETS 25 AND 26 OF 71.
8. COMPLETE STAGE 1 REMOVAL OF THE EXISTING SUBSTRUCTURE AS DETAILED ON SHEETS 25 AND 26 OF 71. COMPLETE ROUGH REGRADING OF EMBANKMENT IN FRONT OF THE PROPOSED STAGE 1 ABUTMENTS.
9. COMPLETE STAGE 1 CONSTRUCTION OF THE SUBSTRUCTURE, SUPERSTRUCTURE, AND APPROACH SLABS AS DETAILED ON SHEETS 23 THRU 60 OF 71.
10. CONSTRUCT ADDITIONAL EMBANKMENT ON LT ROADWAY SIDE SLOPE.
11. REMOVE PAVED SHOULDER ON THE LT SIDE OF US ROUTE 40 FROM STA. 46+00.00 TO STA. 49+12.50 AND FROM STA. 53+71.50 TO STA. 56+69.00. CONSTRUCT BASE COURSE WIDENING (10" MIN.) FROM STA. 46+00.00 TO STA. 49+15.50 AND FROM STA. 53+68.50 TO STA. 56+69.00.
12. CONSTRUCT PROPOSED HMA BINDER COURSE FOR THE LT LANE FROM STA 47+42.38 TO STA 49+15.50 AND FROM STA. 53+68.50 TO STA. 55+21.42. CONSTRUCT VARIABLE DEPTH BASE COURSE WIDENING FROM STA. 48+42.28 TO STA. 49+15.50 AND STA. 53+68.50 TO STA. 54+65.15 ALONG THE LT SIDE.
13. INSTALL GUARD RAIL, BITUMINOUS STABILIZATION AND AGGREGATE SHOULDER ON LT SIDE OF ROADWAY.
14. INSTALL TEMPORARY PAVEMENT MARKING.

FILE NAME =	USER NAME = default	DESIGNED -	REVISED -	STATE OF ILLINOIS DEPARTMENT OF TRANSPORTATION	SUGGESTED STAGE 1 CONSTRUCTION & TRAFFIC CONTROL		F.A.P. RTE.	SECTION	COUNTY	TOTAL SHEETS	SHEET NO.
H:\P\27834\W07and8\Microstation\CADDShets\0774235-sh1-staging.dgn	PLOT SCALE = 20,0000' / IN.	DRAWN -	REVISED -				752	(U-2BR)B-1	FAYETTE	71	10
PLOT DATE = 9/25/2009	DATE -	CHECKED -	REVISED -		SCALE: SHEET NO. 01 OF 09 SHEETS		STA.	TO STA.		CONTRACT NO. 74235	
									ILLINOIS FED. AID PROJECT		