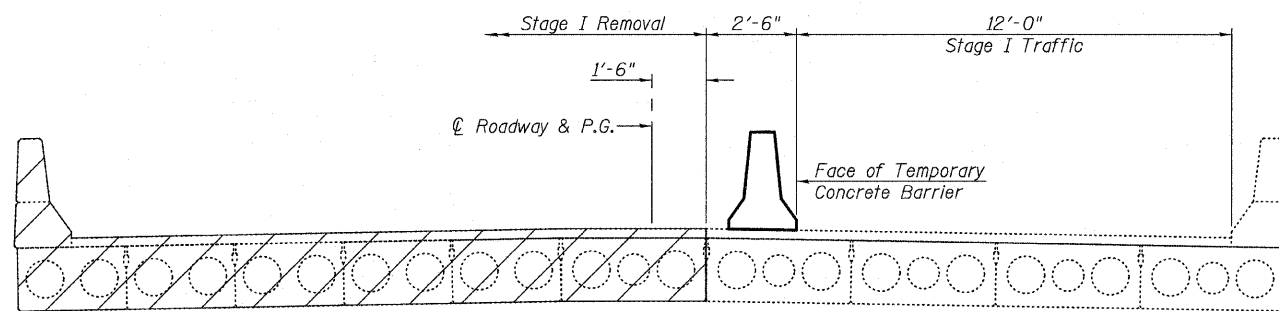
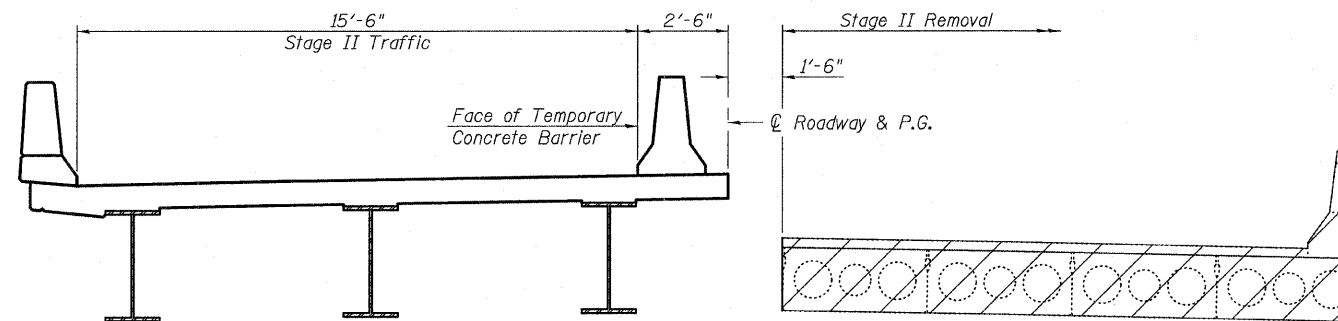


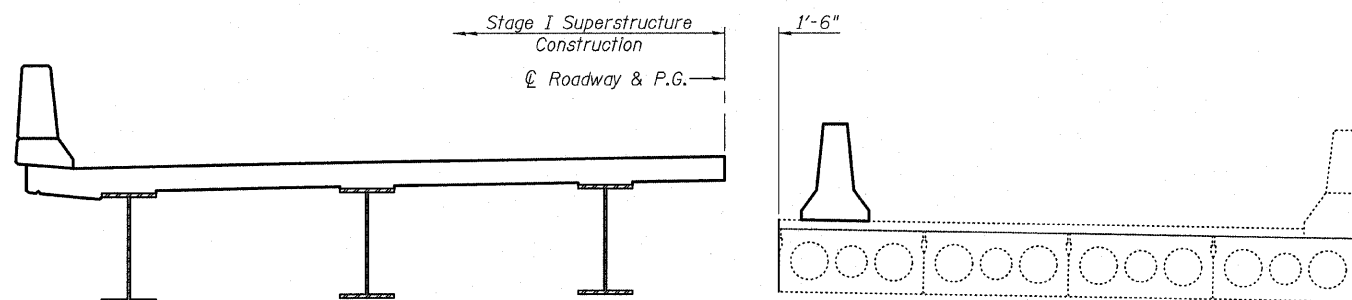
STATE OF ILLINOIS  
DEPARTMENT OF TRANSPORTATION



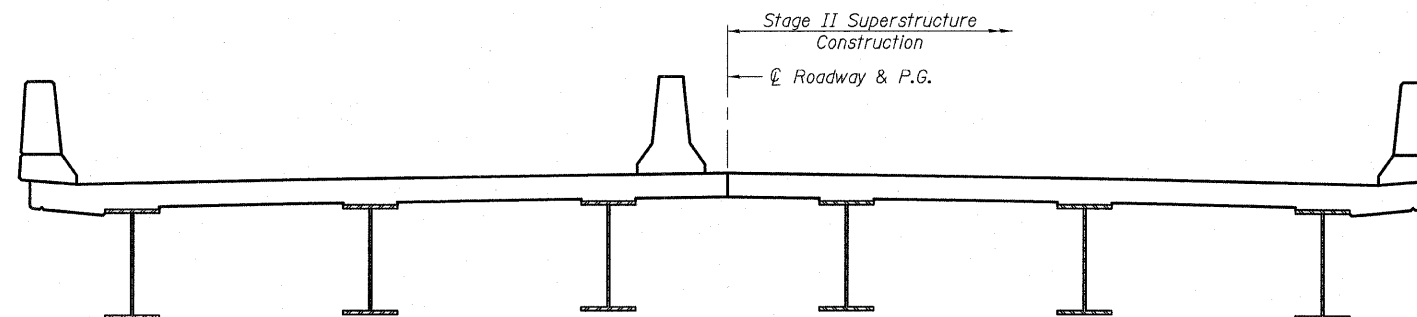
STAGE I REMOVAL ④



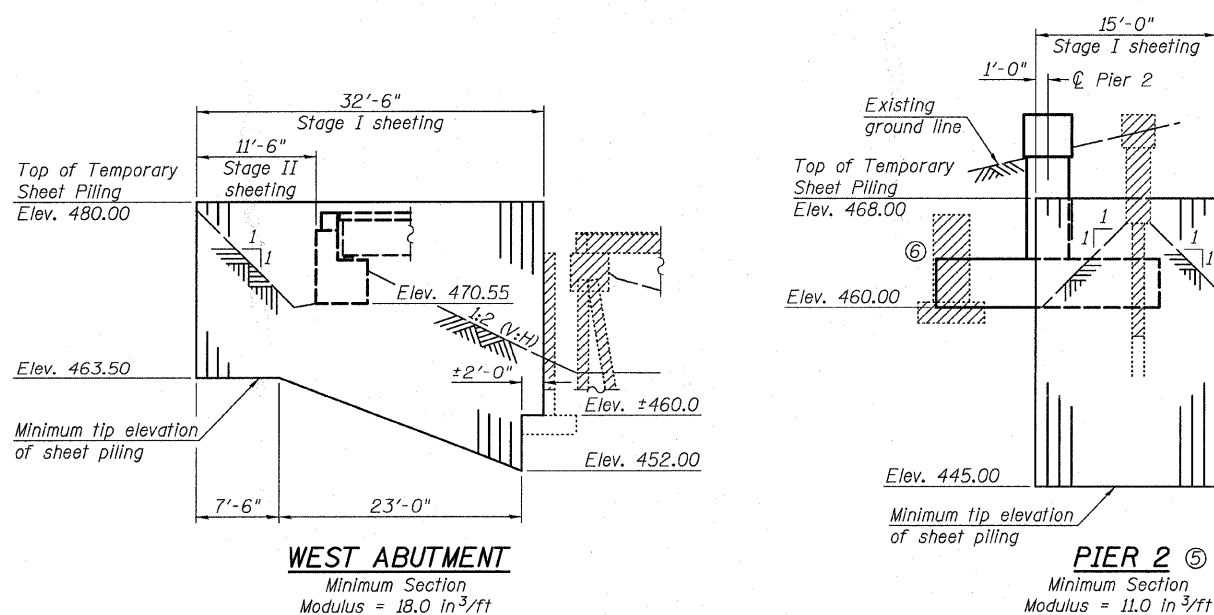
STAGE II REMOVAL ④



STAGE I CONSTRUCTION



STAGE II CONSTRUCTION



TEMPORARY SHEET PILING DETAIL

Notes:

- ① All views of existing Spans 1-6 looking east.
- ② For additional notes regarding stage construction and Temporary Sheet Piling details, see sheet 4 of 38.
- ③ Existing Span 6 support (Pier 10 in 1983 plans) shall be removed during Stage II Removal only. Partial removal of the support will be allowed during Stage I Removal as required to facilitate Stage I Superstructure Construction with the approval of the Engineer.
- ④ Steel WF beams support deficient PPC deck beams in some locations. The steel beams are not shown for clarity. The cost of their removal and salvage is included in Removal of Existing Structures. For additional requirements regarding the deficient PPC deck beams and the removal and salvage of the supporting steel WF beams, see General Notes on sheet 2 of 38.
- ⑤ The piles of existing Bent 5 remaining in service for Stage I Traffic shall not be exposed during Stage I Removal of Bent 5 or Stage I Construction of proposed Pier 2. Excavate to the bottom of Bent 5 wall encasement at the Stage Removal Line before installing Temporary Sheet Piling at Pier 2. Excavation perpendicular to the face of Bent 5 shall not be steeper than 1:1 while bent is in service. Excavation perpendicular to the back of the Temporary Sheet Piling shall not be steeper than 1:1. The cost of excavation outside of the limits of Structure Excavation shall be included in Removal of Existing Structures.
- ⑥ For note regarding removal of existing pier remnants buried in the vicinity of proposed Pier 2, see General Notes on sheet 2 of 38.

STAGE CONSTRUCTION DETAILS  
STRUCTURE NO. 026-0105

SHEET NO. 3 38 SHEETS	F.A.P. RTE.	SECTION	COUNTY	TOTAL SHEETS	SHEET NO.
	752	(U-2BR)B-1	FAYETTE	71	25
FED. ROAD DIST. NO. 7 ILLINOIS			FED. AID PROJECT		
Eastport Business Center 1 100 Lanter Court, Suite 1 Collinsville, Illinois 62234 618-345-2200 Design Firm License No. 184.001115					DESIGNED MAG CHECKED NEL DRAWN MAG CHECKED NEL