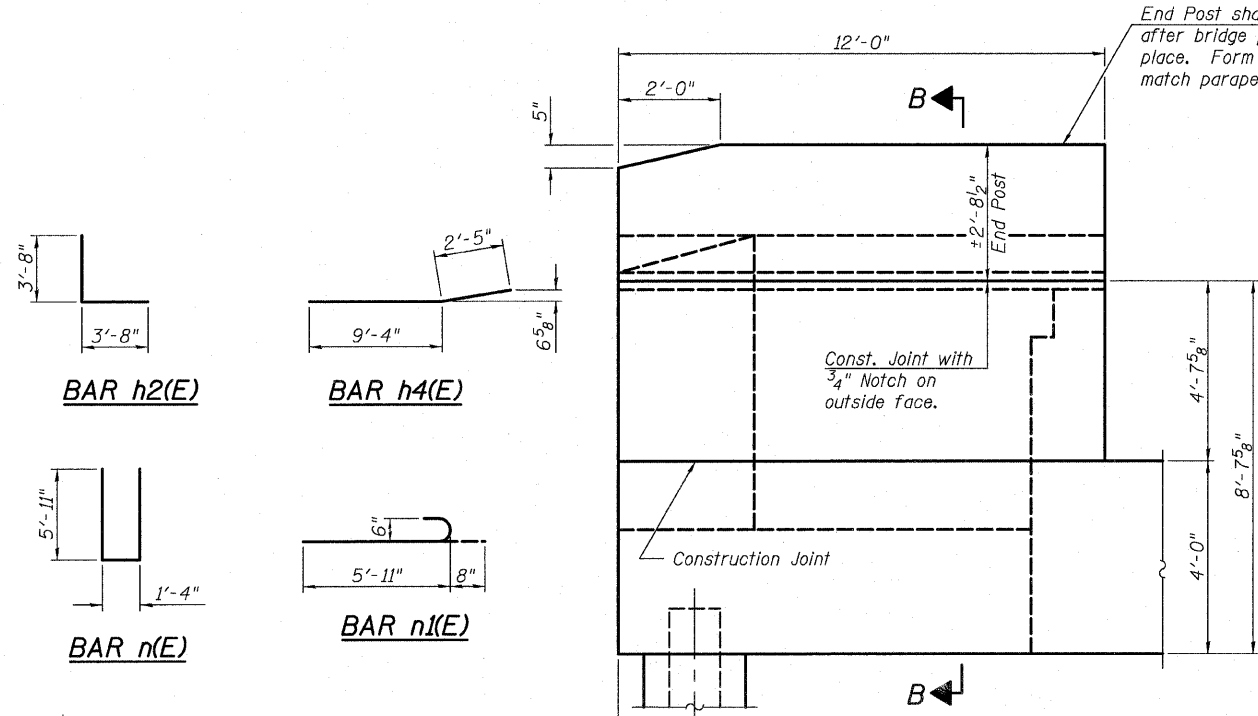
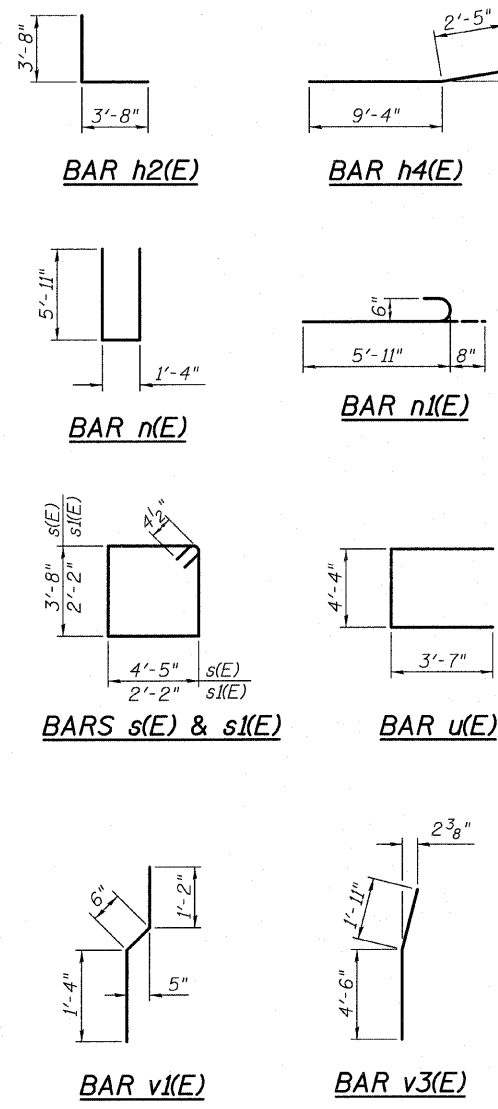


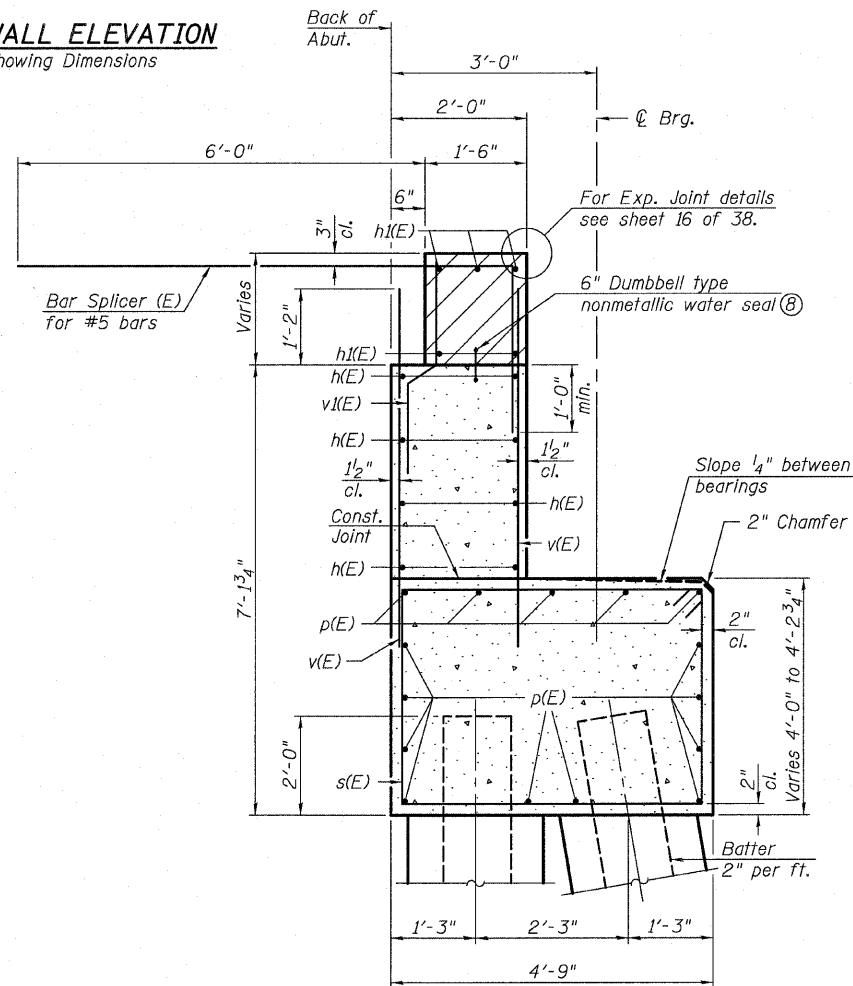
STATE OF ILLINOIS  
DEPARTMENT OF TRANSPORTATION



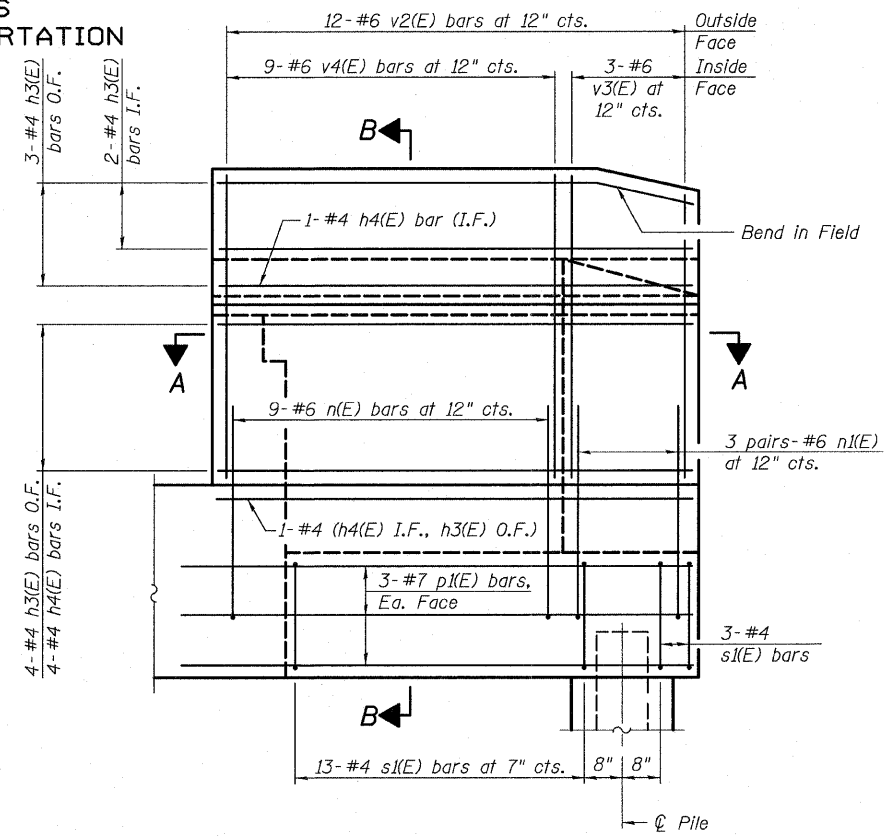
End Post shall be poured after bridge parapet is in place. Form top surface to match parapet grade.



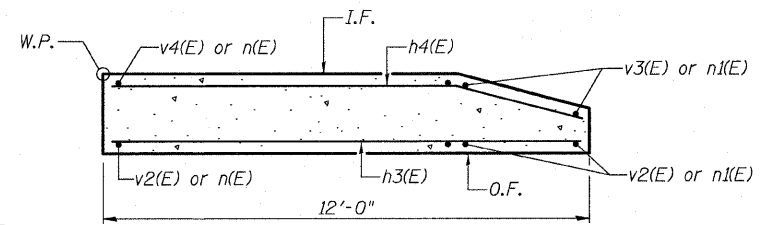
WING WALL ELEVATION  
Showing Dimensions



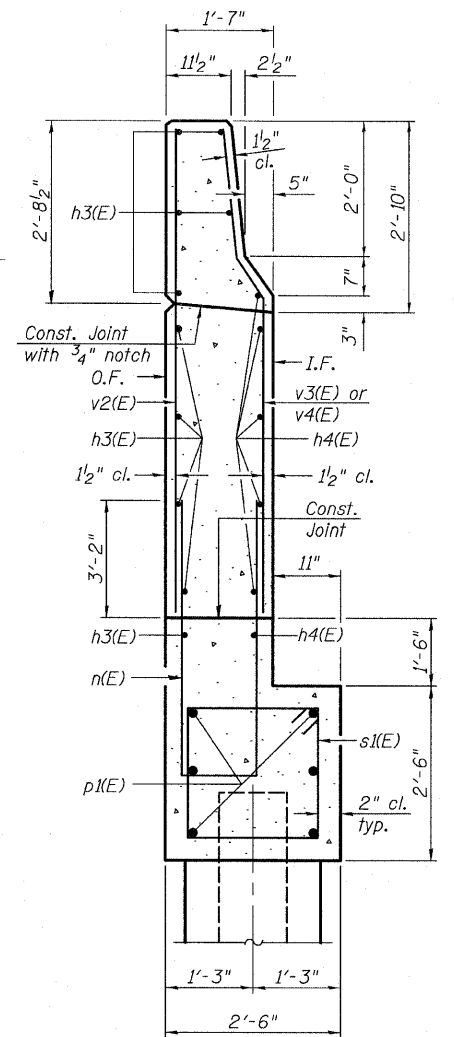
SEC. THRU ABUT.



WING WALL ELEVATION  
Showing Reinforcement



SECTION A-A



SECTION B-B

ABUTMENT DETAILS  
STRUCTURE NO. 026-0105

- Notes:
- ① Hatched area to be poured after superstructure false work has been removed. Quantity of concrete included with Concrete Superstructure.
  - ② Space reinforcement in cap to miss anchor bolts.
  - ③ Pour steps monolithically with cap.
  - ④ Quantity of concrete in end post included with Concrete Superstructure on sheet 13 of 38.
  - ⑤ For Concrete Encasement details, see sheet 29 of 38.
  - ⑥ The abutments shall have all exposed surfaces of backwalls, bridge seats, and front faces of pile caps treated with Concrete Sealer.
  - ⑦ I.F. denotes inside face.  
O.F. denotes outside face.
  - ⑧ 6" Dumbbell type nonmetallic water seal shall be in accordance with Sections 503.12 and 1054 of the Standard Specifications. Cost included with Concrete Structures.

SHEET NO. 25 38 SHEETS	F.A.P. RTE. 752	SECTION (U-2BR)DB-1	COUNTY FAYETTE	TOTAL SHEETS 71	SHEET NO. 47
	CONTRACT NO. 74235 FED. ROAD DIST. NO. 7 ILLINOIS FED. AID PROJECT				
OATES ASSOCIATES Consulting Engineers			Eastport Business Center 1 100 Lanter Court, Suite 1 Collinsville, Illinois 62234 618-345-2200 Design Firm License No. 184.001115		DESIGNED JAD CHECKED NEL DRAWN MAG CHECKED NEL