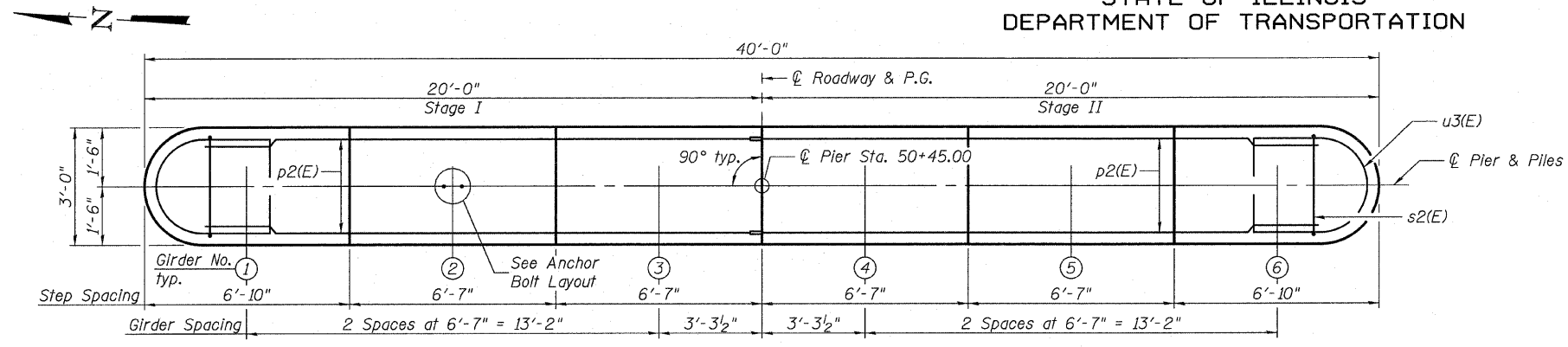
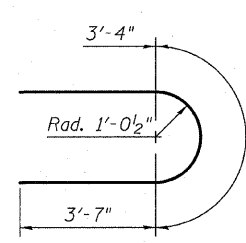


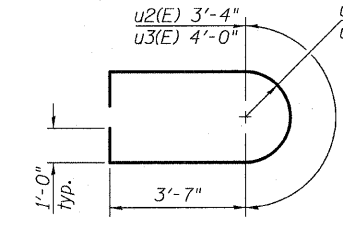
STATE OF ILLINOIS
DEPARTMENT OF TRANSPORTATION



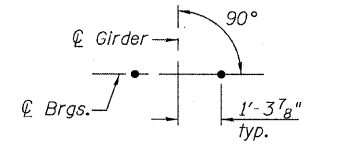
TOP PLAN



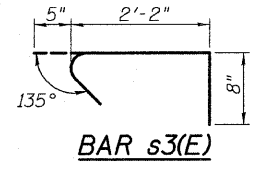
BAR u1(E)



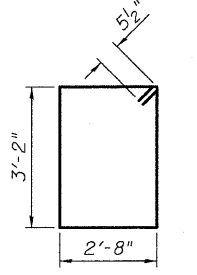
BARS u2(E) & u3(E)



ANCHOR BOLT LAYOUT (5)



BAR s3(E)

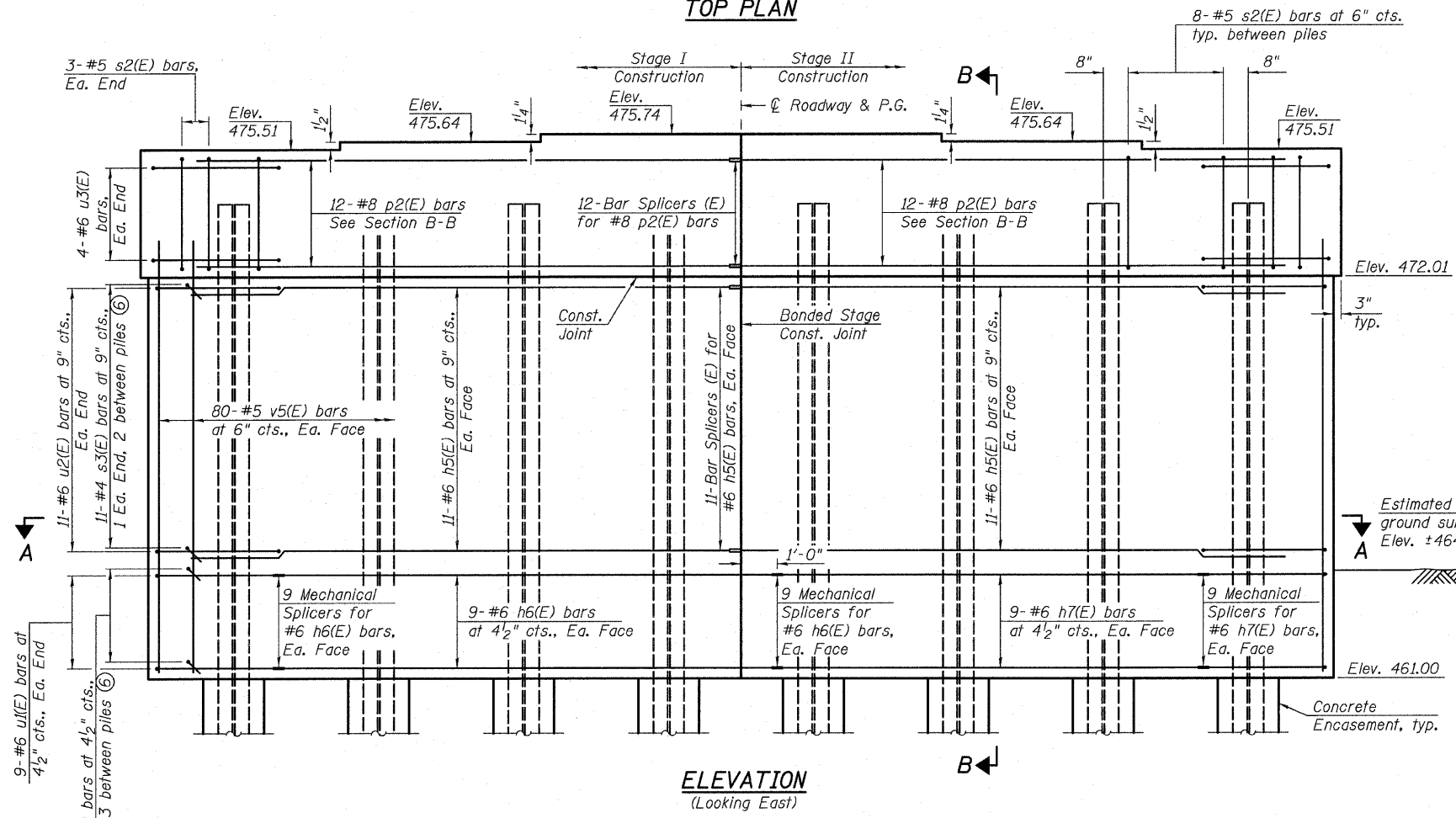


BAR s2(E)

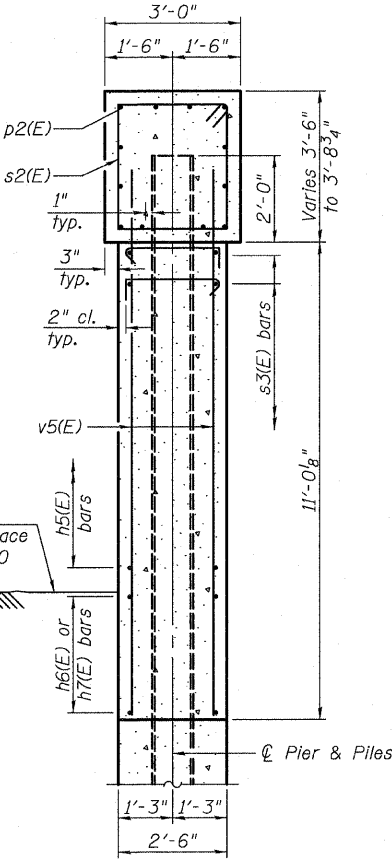
BILL OF MATERIAL

Bar	No.	Size	Length	Shape
h5(E)	44	#6	18'-4"	—
h6(E)	18	#6	15'-11"	—
h7(E)	18	#6	13'-11"	—
p2(E)	24	#8	18'-4"	—
s2(E)	62	#5	12'-7"	□
s3(E)	383	#4	3'-3"	┌
u1(E)	18	#6	10'-6"	U
u2(E)	22	#6	12'-6"	U
u3(E)	8	#6	13'-2"	U
v5(E)	160	#5	12'-2"	—
Structure Excavation		Cu. Yd.	32	
Concrete Structures		Cu. Yd.	55.6	
Concrete Encasement		Cu. Yd.	4.4	
Reinforcement Bars, Epoxy Coated		Pound	7,720	
Furnishing Steel Piles, HP14x89		Foot	644	
Driving Piles		Foot	644	
Test Pile Steel HP14x89		Each	1	
Mechanical Splicers		Each	54	

- Notes:
 (1) Pour steps monolithically with cap.
 (2) For details of Bar Splicers, see sheet 30 of 38.
 (3) For details of piles and Concrete Encasement, see sheet 29 of 38.
 (4) All edges shall have standard 3/4" chamfer.
 (5) Space reinforcement in cap to miss anchor bolts.
 (6) Alternate s3(E) bars end for end as shown in Section B-B.

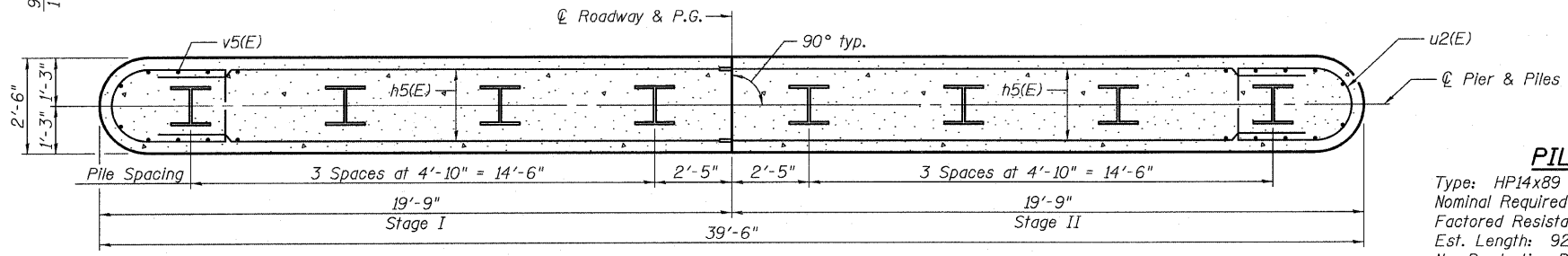


ELEVATION
(Looking East)



SECTION B-B

PIER 1 DETAILS
STRUCTURE NO. 026-0105



SECTION A-A

PILE DATA
 Type: HP14x89
 Nominal Required Bearing: 705 Kip
 Factored Resistance Available: 353 Kip
 Est. Length: 92'
 No. Production Piles: 7
 No. Test Piles: 1

SHEET NO. 26 38 SHEETS	F.A.P. RTE.	SECTION	COUNTY	TOTAL SHEETS	SHEET NO.
	752	(U-2BR)B-1	FAYETTE	71	48
FED. ROAD DIST. NO. 7 ILLINOIS			FED. AID PROJECT		
CONTRACT NO. 74235			DESIGNED MAG		
Eastport Business Center 1 100 Lanter Court, Suite 1 Collinsville, Illinois 62234 618-345-2200 Design Firm License No. 184.001115			CHECKED NEL		
OATES ASSOCIATES Consulting Engineers			DRAWN MAG		
			CHECKED NEL		