

F.A.P. RTE.	SECTION	COUNTY	TOTAL SHEETS	SHEET NO.
999	82-1B-2	ST. CLAIR	82-1	1
FED. ROAD DIST. NO.	ILLINOIS	CONTRACT NO. 76D61		

* 333 total sheets

D-98-066-09



LOCATION OF SECTION INDICATED THUS: - ■ -

FINAL PLANS
MARCH 9, 2010

STATE OF ILLINOIS
DEPARTMENT OF TRANSPORTATION
DIVISION OF HIGHWAYS

SUBMITTED March 9, 2010

Mary C. James
DEPUTY DIRECTOR OF HIGHWAYS, REGION ENGINEER

March 19, 2010
Scott E. Stitt, P.E.
Acting ENGINEER OF DESIGN AND ENVIRONMENT

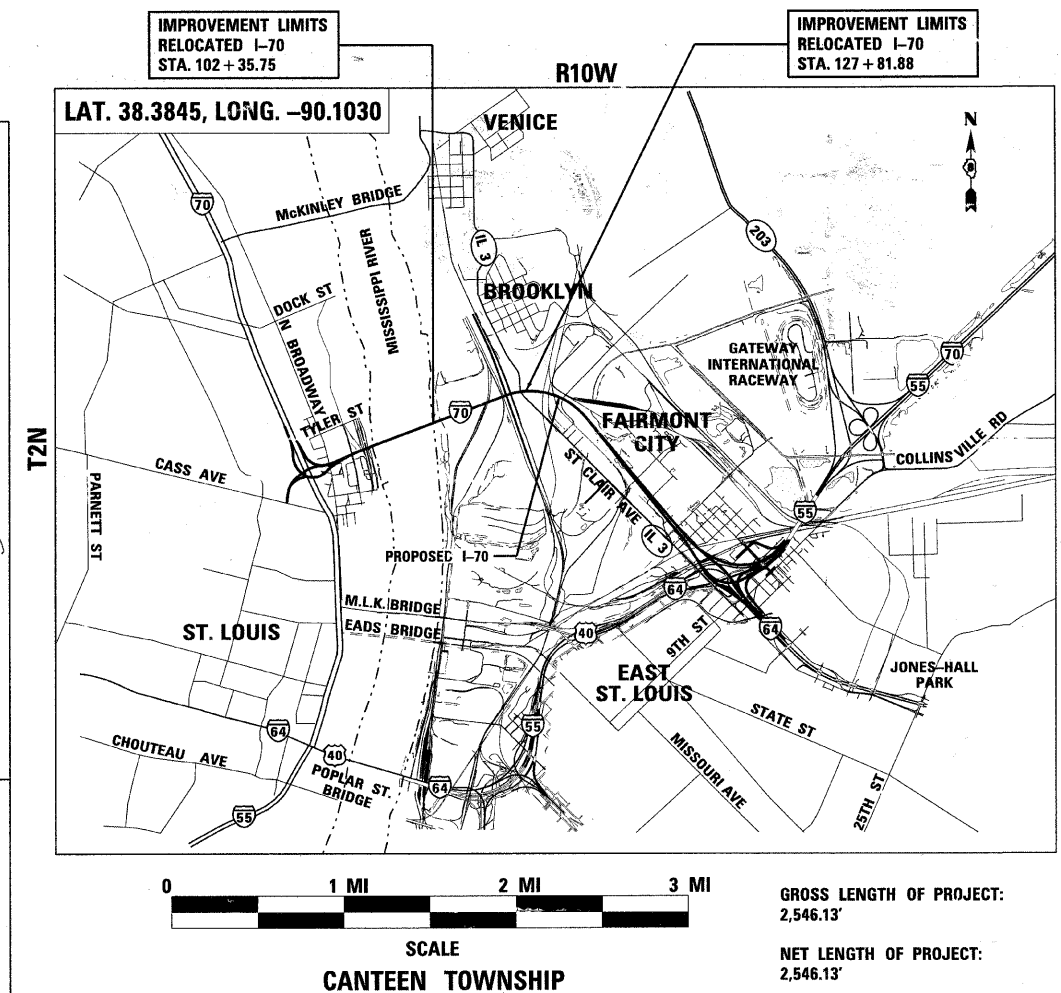
March 19, 2010
Christine M. Reed
DIRECTOR OF HIGHWAYS, CHIEF ENGINEER

PRINTED BY THE AUTHORITY OF THE STATE OF ILLINOIS

STATE OF ILLINOIS
DEPARTMENT OF TRANSPORTATION
DIVISION OF HIGHWAYS
PROPOSED HIGHWAY PLANS

FAP ROUTE 999
SECTION 82-1B-2
PROJECT: PNRS-0999(004)
ST. CLAIR COUNTY
C-98-041-10

ILLINOIS APPROACH STRUCTURE FOR NEW I-70 MISSISSIPPI RIVER BRIDGE AT ST. LOUIS TO ILLINOIS ROUTE 3



GROSS LENGTH OF PROJECT: 2,546.13'
NET LENGTH OF PROJECT: 2,546.13'

LIST OF STRUCTURAL WORK

- STRUCTURE NO. A6500 IL APPROACH STRUCTURE (NEW I-70 MISSISSIPPI RIVER BRIDGE AT ST. LOUIS TO IL ROUTE 3) MISSOURI NAMING CONVENTION
- STRUCTURE NO. 082-0379 EB STRUCTURE UNIT 1 & UNIT 2 ILLINOIS NAMING CONVENTION
- STRUCTURE NO. 082-0382 WB STRUCTURE UNIT 1 & UNIT 2 ILLINOIS NAMING CONVENTION

FOR INDEX OF SHEETS, SEE SHEET NO. 2

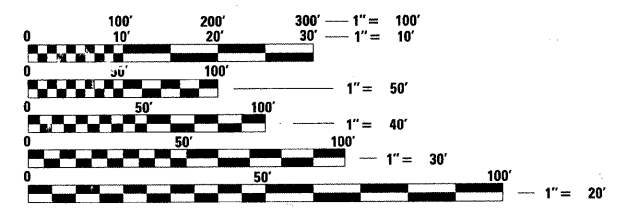
FOR INDEX OF HIGHWAY STANDARDS, SEE SHEET NO. 2

INTERSTATE 70
ADT = 59,940 (2030)
DESIGN SPEED = 60 MPH
POSTED SPEED = 55 MPH

PROJECT ENGINEER : MICHAEL D. PRITCHETT (618) 346-3180
PROJECT MANAGER : JANE CHASTAIN MERCER (618) 346-3206

PROJECT LOCATED IN THE FOLLOWING ILLINOIS CITIES:
BROOKLYN, EAST ST. LOUIS, FAIRMONT CITY AND VENICE

PLANS 1" = 50'
PROFILES 1" = 5'
X-SECTIONS 1" = 10' H
1" = 5' V



FULL SIZE PLANS HAVE BEEN PREPARED USING STANDARD ENGINEERING SCALES. REDUCED SIZED PLANS WILL NOT CONFORM TO STANDARD SCALES. IN MAKING MEASUREMENTS ON REDUCED PLANS, THE ABOVE SCALES MAY BE USED.

J.U.L.I.E.
JOINT UTILITY LOCATION INFORMATION FOR EXCAVATION
1-800-892-0123
OR 811

CONTRACT NO. 76D61

MATTHEW MILLER, P.E.
EXPIRES: 11-30-2011
DATE: 3-5-2010

FOR SHEETS: 13, 5-8,
12-42, 54-57 (Plans)
1-90 (Access Road Cross Sections)

HNTB
715 KIRK DRIVE
KANSAS CITY, MO 64105
TELEPHONE (816) 472-1201
CERTIFICATE OF AUTHORITY NO. 001270

RICHARD KERHLIKAR, P.E., S.E.
EXPIRES: 11-30-2010
DATE: 03-09-2010

FOR SHEETS: GRADE SHEETS 1-152

KEVIN FULLER, P.E.
EXPIRES: 11-30-2011
DATE: 3-9-2010

FOR SHEETS: 1-42,
54-67, 78-81 (PLANS)
1-100 (ACCESS ROAD CROSS SECTIONS)

CRAWFORD, MURPHY & TILLY, INC.
2750 WEST WASHINGTON STREET
SPRINGFIELD, IL 62702
TELEPHONE (217) 787-8050
ENGINEERING CORPORATION - 000631