

F.A. ROUTE	SECTION
999	82-1B-2

FED. AID PROJECT ILLINOIS

COUNTY ST. CLAIR

USER NAME = John Keaven

PLOT SCALE = 300,0000' / IN

PLOT DATE = 4/14/2010

DESIGNED - HNTB

CHECKED - CMT

DRAWN - CMT / HNTB

REVISED -

REVISED -

REVISED -

REVISED -

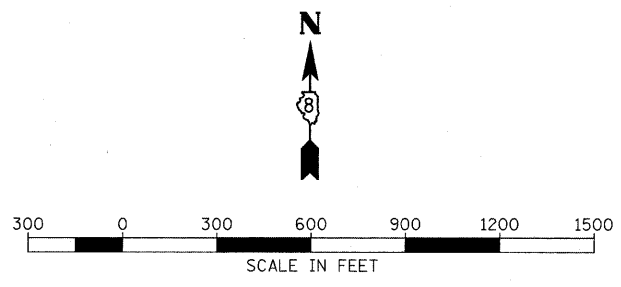
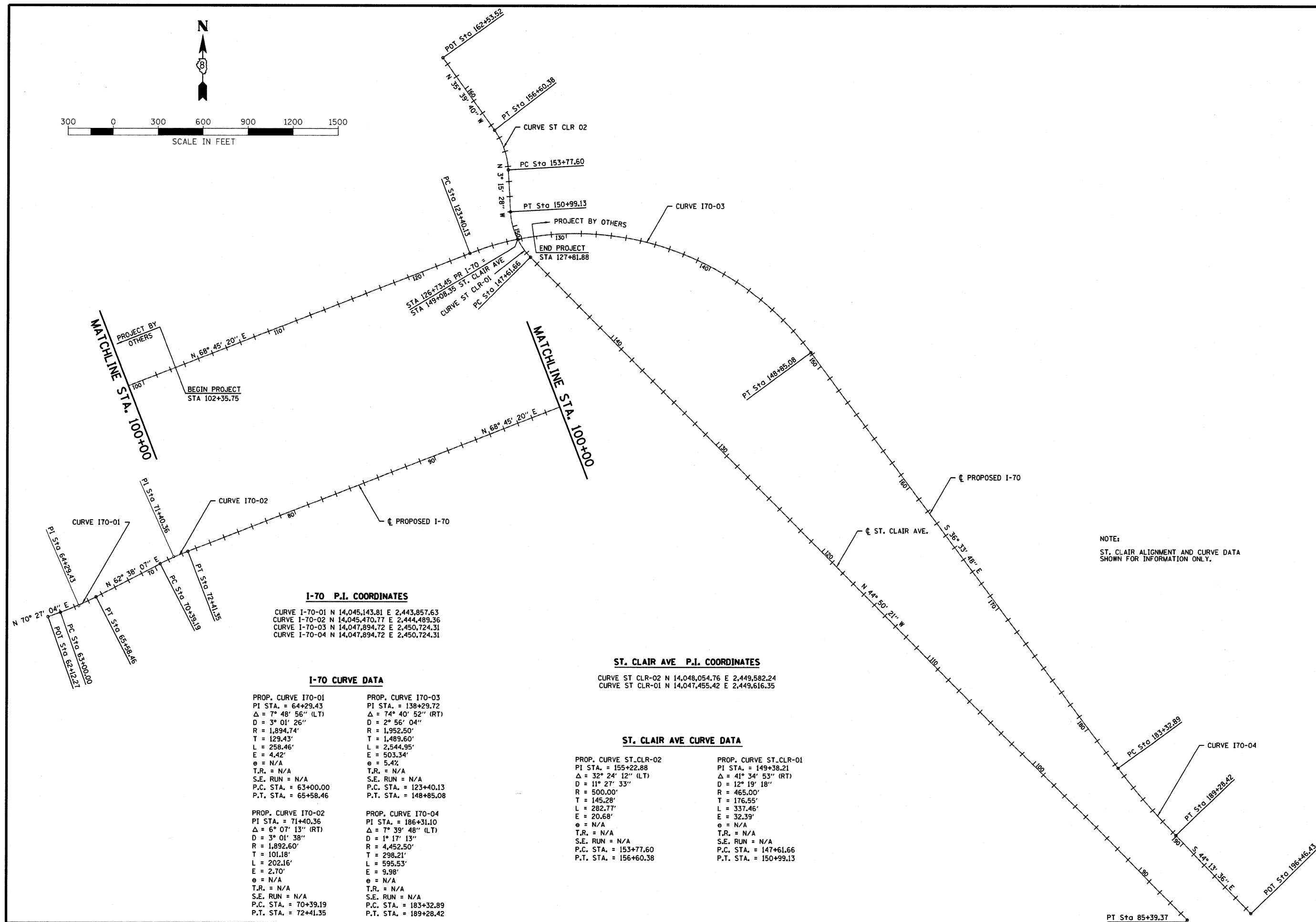
REVISED -

ALIGNMENT SHEET
RELOCATED INTERSTATE 70
ILLINOIS APPROACH STRUCTURE
FOR NEW I-70 MISSISSIPPI RIVER BRIDGE

STATE OF ILLINOIS
DEPARTMENT OF TRANSPORTATION
MISSOURI HIGHWAYS
AND TRANSPORTATION COMMISSION

HNTB
715 KIRK DRIVE
KANSAS CITY, MO 64105
TELEPHONE (816) 472-1201
CERTIFICATE OF AUTHORITY
NO. 001270

CMT
CRAWFORD, MURPHY & TILLY, INC.
2750 WEST WASHINGTON STREET
SPRINGFIELD, IL 62702
TELEPHONE (217) 787-8050
ENGINEERING CORPORATION - 000631



I-70 P.I. COORDINATES

CURVE I-70-01	N 14,045,143.81	E 2,443,857.63
CURVE I-70-02	N 14,045,470.77	E 2,444,489.36
CURVE I-70-03	N 14,047,894.72	E 2,450,724.31
CURVE I-70-04	N 14,047,894.72	E 2,450,724.31

I-70 CURVE DATA

PROP. CURVE I70-01	PROP. CURVE I70-03
PI STA. = 64+29.43	PI STA. = 138+29.72
Δ = 7° 48' 56" (LT)	Δ = 74° 40' 52" (RT)
D = 3° 01' 26"	D = 2° 56' 04"
R = 1,894.74'	R = 1,952.50'
T = 129.43'	T = 1,489.60'
L = 258.46'	L = 2,544.95'
E = 4.42'	E = 503.34'
θ = N/A	θ = 5.42'
T.R. = N/A	T.R. = N/A
S.E. RUN = N/A	S.E. RUN = N/A
P.C. STA. = 63+00.00	P.C. STA. = 123+40.13
P.T. STA. = 65+58.46	P.T. STA. = 148+85.08

PROP. CURVE I70-02	PROP. CURVE I70-04
PI STA. = 71+40.36	PI STA. = 186+31.10
Δ = 6° 07' 13" (RT)	Δ = 7° 39' 48" (LT)
D = 3° 01' 38"	D = 1° 17' 13"
R = 1,892.60'	R = 4,452.50'
T = 101.18'	T = 298.21'
L = 202.16'	L = 595.53'
E = 2.70'	E = 9.98'
θ = N/A	θ = N/A
T.R. = N/A	T.R. = N/A
S.E. RUN = N/A	S.E. RUN = N/A
P.C. STA. = 70+39.19	P.C. STA. = 183+32.89
P.T. STA. = 72+41.35	P.T. STA. = 189+28.42

ST. CLAIR AVE P.I. COORDINATES

CURVE ST CLR-02	N 14,048,054.76	E 2,449,582.24
CURVE ST CLR-01	N 14,047,455.42	E 2,449,616.35

ST. CLAIR AVE CURVE DATA

PROP. CURVE ST CLR-02	PROP. CURVE ST CLR-01
PI STA. = 155+22.88	PI STA. = 149+38.21
Δ = 32° 24' 12" (LT)	Δ = 41° 34' 53" (RT)
D = 11° 27' 33"	D = 12° 19' 18"
R = 500.00'	R = 465.00'
T = 145.28'	T = 176.55'
L = 282.77'	L = 337.46'
E = 20.68'	E = 32.39'
θ = N/A	θ = N/A
T.R. = N/A	T.R. = N/A
S.E. RUN = N/A	S.E. RUN = N/A
P.C. STA. = 153+77.60	P.C. STA. = 147+61.66
P.T. STA. = 156+60.38	P.T. STA. = 150+99.13

NOTE:
ST. CLAIR ALIGNMENT AND CURVE DATA
SHOWN FOR INFORMATION ONLY.