

• THE LENGTH AND PLACEMENT OF BARRIER SHALL BE AS DIRECTED BY THE ENGINEER AND TRRA'S ENGINEER

▨ TREE REMOVAL
X TREE REMOVAL UNITS

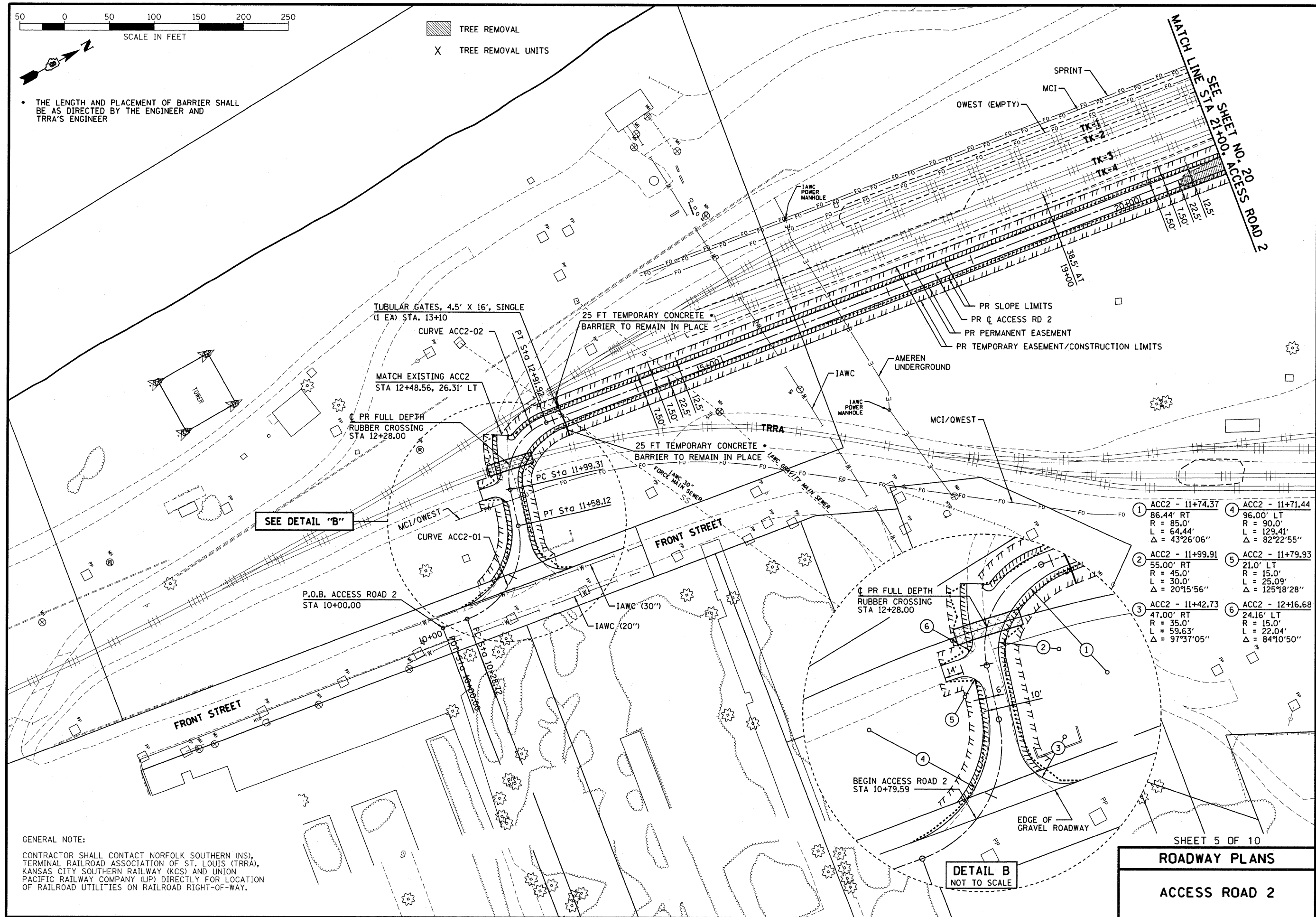
CONTRACT NO. 76D61	
F.A. ROUTE	SECTION
999	82-1B-2
FED. AID PROJECT	ILLINOIS
COUNTY	ST. CLAIR
USER NAME = John Keaven	
PLOT SCALE = 50,0000' / IN.	
PLOT DATE = 4/14/2010	
DESIGNED	- HNTB
CHECKED	- CMT
DRAWN	- CMT / HNTB
REVISED	-
REVISED	-
REVISED	-
REVISED	-

PROPOSED PLAN ACCESS ROADS
ILLINOIS APPROACH STRUCTURE FOR NEW I-70 MISSISSIPPI RIVER BRIDGE
STA. 21 + 00 TO FRONT STREET

STATE OF ILLINOIS DEPARTMENT OF TRANSPORTATION
MISSOURI HIGHWAYS AND TRANSPORTATION COMMISSION

HNTB
715 KIRK DRIVE
KANSAS CITY, MO 64105
TELEPHONE (816) 472-1201
CERTIFICATE OF AUTHORITY NO. 001270

CMT
CRAWFORD, MURPHY & TILLY, INC.
2750 WEST WASHINGTON STREET
SPRINGFIELD, IL 62702
TELEPHONE (217) 787-8050
ENGINEERING CORPORATION - 000631



SEE DETAIL "B"

DETAIL B
NOT TO SCALE

1	ACC2 - 11+74.37	4	ACC2 - 11+71.44
	86.44' RT		96.00' LT
	R = 85.0'		R = 90.0'
	L = 64.44'		L = 129.41'
	Δ = 43°26'06"		Δ = 82°22'55"
2	ACC2 - 11+99.91	5	ACC2 - 11+79.93
	55.00' RT		21.0' LT
	R = 45.0'		R = 15.0'
	L = 30.0'		L = 25.09'
	Δ = 20°15'56"		Δ = 125°18'28"
3	ACC2 - 11+42.73	6	ACC2 - 12+16.68
	47.00' RT		24.16' LT
	R = 35.0'		R = 15.0'
	L = 59.63'		L = 22.04'
	Δ = 97°37'05"		Δ = 84°10'50"

GENERAL NOTE:
CONTRACTOR SHALL CONTACT NORFOLK SOUTHERN (NS), TERMINAL RAILROAD ASSOCIATION OF ST. LOUIS (TRRA), KANSAS CITY SOUTHERN RAILWAY (KCS) AND UNION PACIFIC RAILWAY COMPANY (UP) DIRECTLY FOR LOCATION OF RAILROAD UTILITIES ON RAILROAD RIGHT-OF-WAY.

SHEET 5 OF 10
ROADWAY PLANS
ACCESS ROAD 2