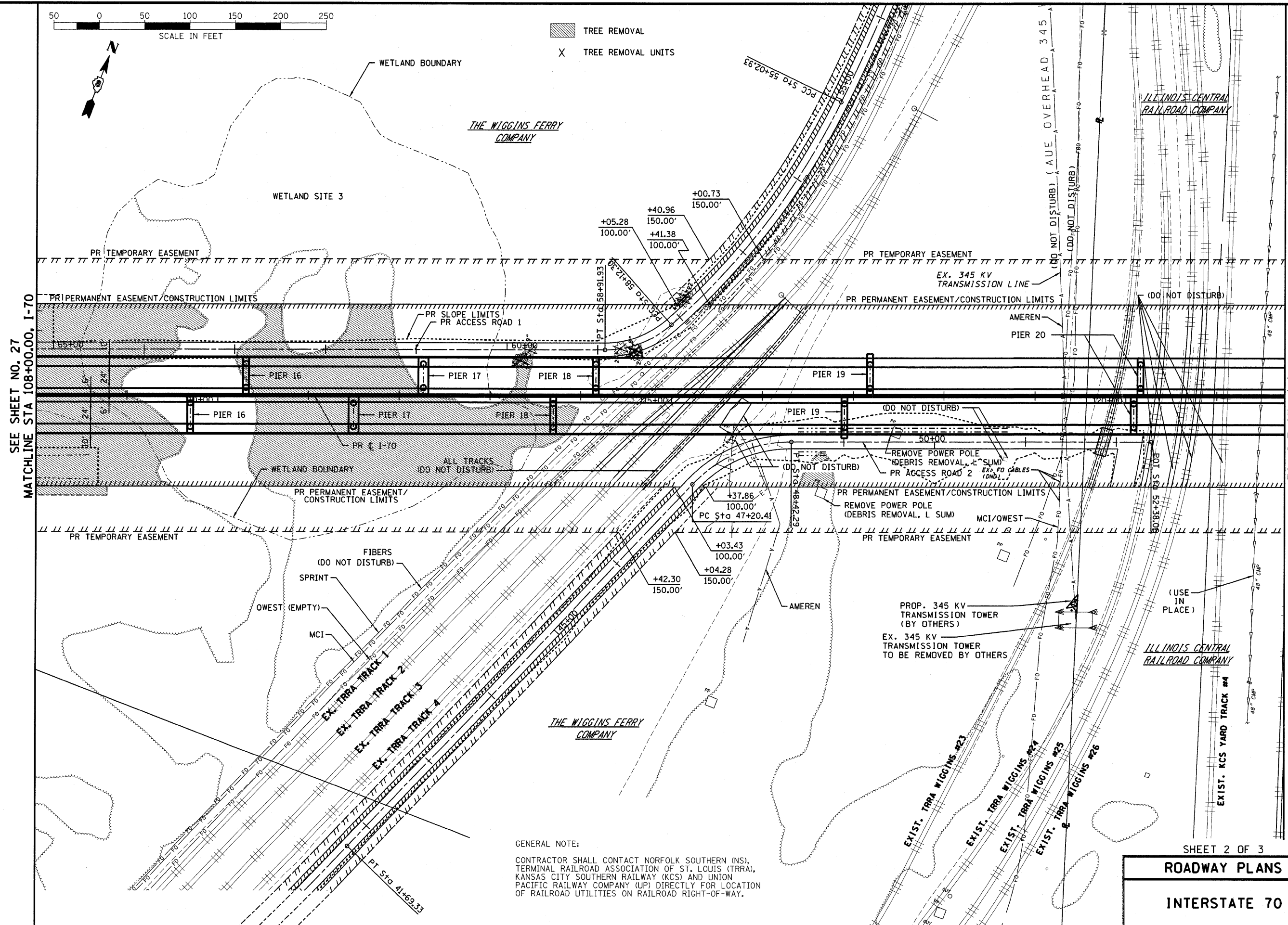


TREE REMOVAL
 TREE REMOVAL UNITS



SEE SHEET NO. 27
MATCHLINE STA 108+00.00, I-70

MATCHLINE STA 121+75.00, I-70
SEE SHEET NO. 29

GENERAL NOTE:
 CONTRACTOR SHALL CONTACT NORFOLK SOUTHERN (NS),
 TERMINAL RAILROAD ASSOCIATION OF ST. LOUIS (TRRA),
 KANSAS CITY SOUTHERN RAILWAY (KCS) AND UNION
 PACIFIC RAILWAY COMPANY (UP) DIRECTLY FOR LOCATION
 OF RAILROAD UTILITIES ON RAILROAD RIGHT-OF-WAY.

CONTRACT NO. 76D61	
F.A. ROUTE	SECTION
999	82-1B-2
FED. AID PROJECT	ILLINOIS
COUNTY	ST. CLAIR
USER NAME = John Keaven	
PLOT SCALE = 50,0000' / IN.	
PLOT DATE = 4/14/2010	
DESIGNED -	HNTB
CHECKED -	CMT
DRAWN -	CMT / HNTB
REVISED -	
REVISED -	
REVISED -	
REVISED -	

PROPOSED PLAN	INTERSTATE 70
ILLINOIS APPROACH STRUCTURE	
FOR NEW I-70 MISSISSIPPI RIVER BRIDGE	
STA. 108 + 00 TO STA. 121 + 75	

STATE OF ILLINOIS	MISSOURI HIGHWAYS
DEPARTMENT OF TRANSPORTATION	AND TRANSPORTATION COMMISSION

HNTB
 715 KIRK DRIVE
 KANSAS CITY, MO 64105
 TELEPHONE (816) 472-1201
 CERTIFICATE OF AUTHORITY
 NO. 001270

CMT
 CRAWFORD, MURPHY & TILLY, INC.
 2750 WEST WASHINGTON STREET
 SPRINGFIELD, IL 62702
 TELEPHONE (217) 787-8050
 ENGINEERING CORPORATION - 000631

SHEET 2 OF 3
ROADWAY PLANS
INTERSTATE 70