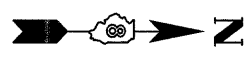


PART OF SECTION 2 & 11, T2N, R10W, OF THE 4TH PM, ST. CLAIR COUNTY, ILLINOIS

PROP. CURVE PRACCO2-1	PROP. CURVE PRACCO2-2	PROP. CURVE PRACCO2-3	PROP. CURVE PRACCO2-4	PROP. CURVE PRACCO2-5
PI STA. = 11+07.48 Δ = 82°22'55" (LT) T = 78.76' L = 129.41' R = 90.00' C = 118.54' C.B. = N 33°15'32" W P.C. STA. = 10+28.72 P.T. STA. = 11+58.12	PI STA. = 12+55.45 Δ = 81°37'56" (RT) T = 56.14' L = 92.61' R = 65.00' C = 84.97' C.B. = N 33°38'02" W P.C. STA. = 11+99.31 P.T. STA. = 12+91.92	PI STA. = 27+17.97 Δ = 21°06'27" (RT) T = 126.69' L = 250.51' R = 680.00' C = 249.10' C.B. = N 17°44'09" E P.C. STA. = 25+91.27 P.T. STA. = 28+41.78	PI STA. = 40+10.06 Δ = 6°05'22" (LT) T = 159.58' L = 318.85' R = 3,000.00' C = 318.70' C.B. = N 25°14'42" E P.C. STA. = 38+50.48 P.T. STA. = 41+69.33	PI STA. = 47+84.94 Δ = 46°33'20" (RT) T = 64.53' L = 121.88' R = 150.00' C = 118.56' C.B. = N 45°28'40" E P.C. STA. = 47+20.41 P.T. STA. = 48+42.29

PROP. CURVE 1111-4	PROP. CURVE 1111-5	PROP. CURVE 1111-6	PROP. CURVE 1111-7	PROP. CURVE 1111-8	PROP. CURVE 1111-9
PI STA. = 42+23.54 Δ = 4°41'38" (RT) T = 122.65' L = 245.15' R = 2,992.50' C = 92.61' C.B. = 65.00' P.C. STA. = 41+00.89 P.T. STA. = 43+46.04	PI STA. = 45+85.44 Δ = 17°59'15" (LT) T = 56.58' L = 112.23' R = 357.50' C = 92.61' C.B. = 65.00' P.C. STA. = 45+28.86 P.T. STA. = 46+41.09	PI STA. = 47+61.53 Δ = 36°45'32" (RT) T = 80.57' L = 155.58' R = 242.50' C = 92.61' C.B. = 65.00' P.C. STA. = 46+80.95 P.T. STA. = 48+36.53	PI STA. = 53+69.21 Δ = 6°17'25" (RT) T = 133.99' L = 267.71' R = 2,438.52' C = 92.61' C.B. = 65.00' P.C. STA. = 52+35.22 P.T. STA. = 55+02.93	PI STA. = 56+59.64 Δ = 22°29'50" (RT) T = 156.70' L = 309.37' R = 787.90' C = 92.61' C.B. = 65.00' P.C. STA. = 55+02.93 P.T. STA. = 58+12.30	PI STA. = 58+53.95 Δ = 41°28'30" (RT) T = 41.65' L = 79.63' R = 110.00' C = 92.61' C.B. = 65.00' P.C. STA. = 58+12.30 P.T. STA. = 58+91.93

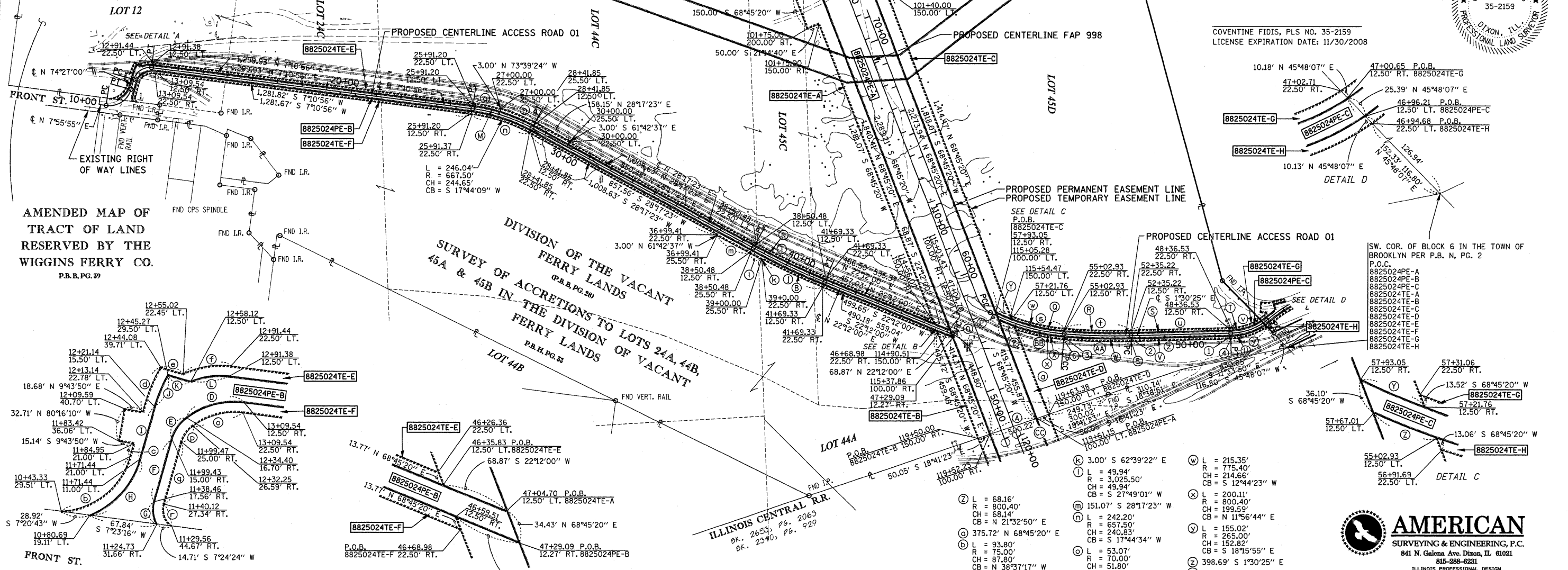
MISSISSIPPI RIVER



STATE OF ILLINOIS)
) SS
COUNTY OF LEE)

I, COVENTINE FIDIS, AN ILLINOIS PROFESSIONAL LAND SURVEYOR, STATE THAT I HAVE SURVEYED THE PLAT OF HIGHWAY SHOWN HEREON AND THAT THIS PROFESSIONAL SERVICE CONFORMS TO THE CURRENT ILLINOIS MINIMUM STANDARDS FOR A BOUNDARY SURVEY FOR THE PROPOSED PARCEL(S) TO BE ACQUIRED BY THE STATE OF ILLINOIS, DEPARTMENT OF TRANSPORTATION, SHOWN HEREON.

DATED _____
COVENTINE FIDIS, PLS NO. 35-2159
LICENSE EXPIRATION DATE: 11/30/2008



AMENDED MAP OF TRACT OF LAND RESERVED BY THE WIGGINS FERRY CO. P.B. PG. 39

DIVISION OF THE VACANT FERRY LANDS (P.B. PG. 20)
SURVEY OF ACCRETIONS TO LOTS 24A, 44B, 45A & 45B IN THE DIVISION OF VACANT FERRY LANDS (P.B. PG. 33)

DETAIL A

DETAIL B

DETAIL C

DETAIL D

* SEE TOTAL HOLDING AREA SOURCE TABLE ON SHEET 2

PARCEL NO.	OWNER	TOTAL HOLDING ACRES	EASEMENTS		PERMANENT TAX NUMBER	PROPERTY ACQUIRED BY	
			PE = PERMANENT	TE = TEMPORARY			
8825024	THE WIGGINS FERRY COMPANY TITLE REPORT NO. SC-5546; SC-5625; SC-5626 SC-6086	183.1465	PE-A 10.4893 PE-B 2.1024 PE-C 0.6206 TE-A 2.2589 TE-B 0.5015 TE-C 2.2824 TE-D 0.4558 TE-E 0.8546 TE-F 0.6214 TE-G 0.2313 TE-H 0.2334	PE-A 456.912 PE-B 91.581 PE-C 21.034 TE-A 98.397 TE-B 21.847 TE-C 99.420 TE-D 19.854 TE-E 37.227 TE-F 35.718 TE-G 10.077 TE-H 10.166	BRIDGE CONSTRUCTION ACCESS ROAD ACCESS ROAD BRIDGE CONSTRUCTION BRIDGE CONSTRUCTION BRIDGE CONSTRUCTION BRIDGE CONSTRUCTION ACCESS ROAD ACCESS ROAD ACCESS ROAD ACCESS ROAD	01-02.0-512-001 01-11.0-200-017 01-11.0-512-002 01-11.0-200-015 01-11.0-512-003 01-11.4-200-011 01-11.4-200-016	

Ⓐ L = 200.20' S 18°41'23" E R = 320.18' CH = 320.03' CB = S 25°14'42" W	Ⓜ L = 255.25' R = 692.50' CH = 253.81' CB = N 17°44'09" E	Ⓢ L = 398.69' N 1°30'25" W R = 157.86' CH = 48.27' CB = N 68°33'31" W	Ⓟ L = 271.35' R = 775.40' CH = 271.26' CB = S 24°46'19" W	Ⓣ L = 266.34' R = 2,426.02' CH = 266.21' CB = N 1°38'17" E	Ⓠ L = 212.61' R = 765.40' CH = 220.84' CB = N 13°04'40" E	Ⓡ L = 215.35' R = 775.40' CH = 214.66' CB = S 12°44'23" W	Ⓡ L = 215.35' R = 775.40' CH = 214.66' CB = S 12°44'23" W	Ⓢ L = 398.69' N 1°30'25" W R = 157.86' CH = 48.27' CB = N 68°33'31" W	Ⓣ L = 266.34' R = 2,426.02' CH = 266.21' CB = N 1°38'17" E	Ⓤ L = 121.41' R = 220.00' CH = 119.87' CB = N 17°18'59" W	Ⓥ L = 121.41' R = 220.00' CH = 119.87' CB = N 17°18'59" W
--	--	--	--	---	--	--	--	--	---	--	--



ILLINOIS DEPARTMENT OF TRANSPORTATION
PLAT OF HIGHWAYS
FAP ROUTE 998 (IL 3)
SECTION 82-2-1B
ST. CLAIR COUNTY
JOB NO. R-98-025-08
STATION 95+56 TO STATION 120+00
SCALE: 1" = 200'
SHEET 3 OF 6

F.A.P. RTE.	SECTION	COUNTY	TOTAL SHEETS	SHEET NO.
788		ST. CLAIR	81	68

ILLINOIS DEPARTMENT OF TRANSPORTATION
DIVISION OF HIGHWAYS/REGION 5/DISTRICT 8
1102 EASTPORT PLAZA DRIVE
COLLINGSVILLE, ILLINOIS 62234-6198
COMPLETION DATE OF FIELD WORK PERFORMED
LAND SURVEY: 5/29/09 ROW STAKING:
CONTRACT NO. 78D61
FED. ROAD DIST. NO. ILLINOIS FED. AID PROJECT