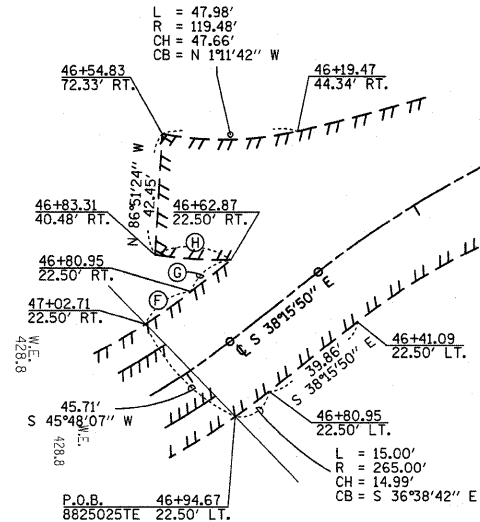


PART OF SECTION 2, T2N, R10W, OF THE 3RD PM, ST. CLAIR COUNTY, ILLINOIS



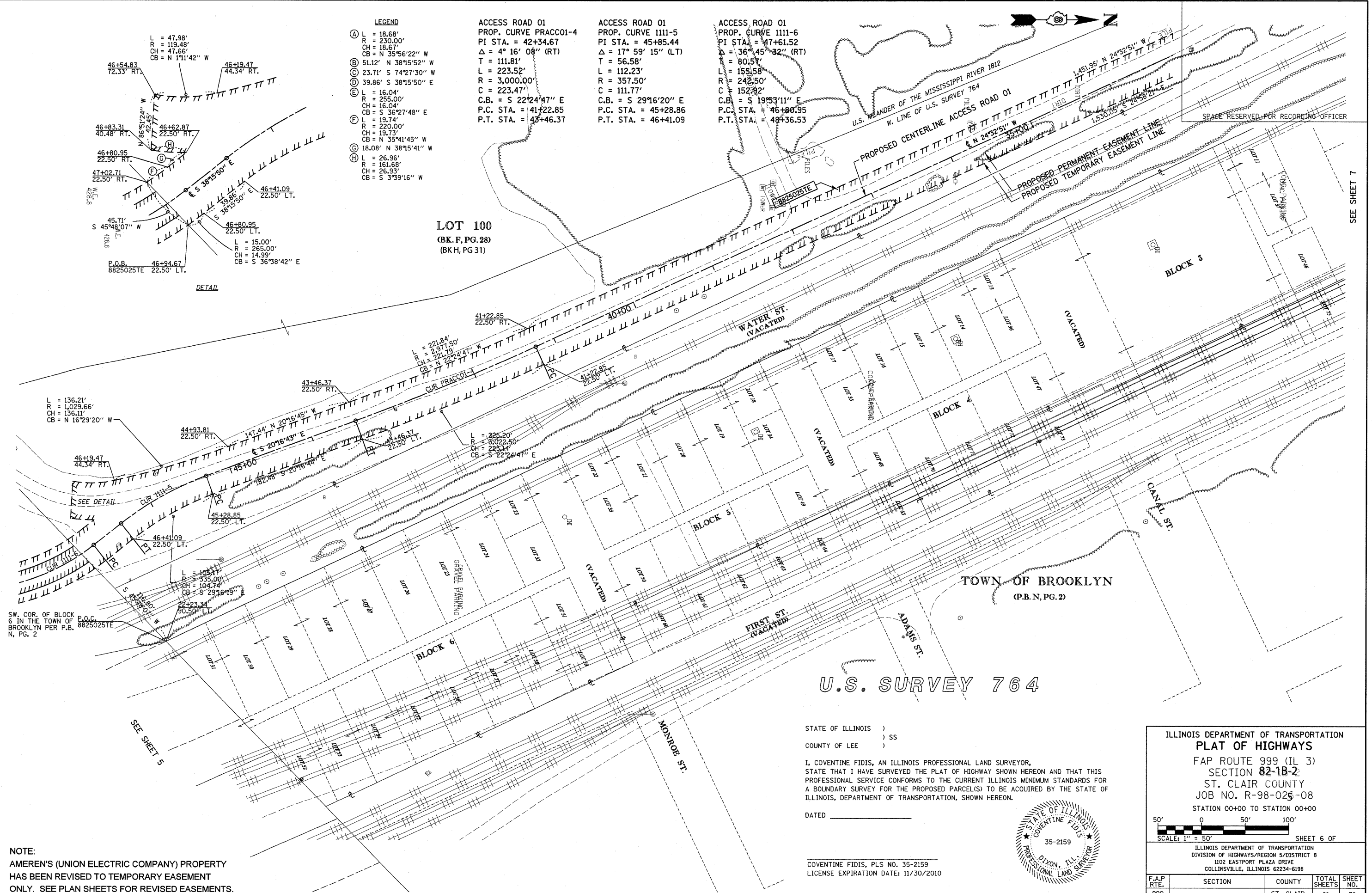
- LEGEND**
- (A) L = 18.68'  
R = 230.00'  
CH = 18.67'  
CB = N 35°56'22" W
  - (B) 51.12' N 38°15'52" W
  - (C) 23.71' S 74°27'30" W
  - (D) 39.86' S 38°15'50" E
  - (E) L = 16.04'  
R = 255.00'  
CH = 16.04'  
CB = S 36°27'48" E
  - (F) L = 19.74'  
R = 220.00'  
CH = 19.73'  
CB = N 35°41'45" W
  - (G) 18.08' N 38°15'41" W
  - (H) L = 26.96'  
R = 161.68'  
CH = 26.93'  
CB = S 3°39'16" W

ACCESS ROAD 01  
PROP. CURVE PRACC01-4  
PI STA. = 42+34.67  
 $\Delta = 4^\circ 16' 08''$  (RT)  
T = 111.81'  
L = 223.52'  
R = 3,000.00'  
C = 223.47'  
C.B. = S 22°24'47" E  
P.C. STA. = 41+22.85  
P.T. STA. = 43+46.37

ACCESS ROAD 01  
PROP. CURVE 1111-5  
PI STA. = 45+85.44  
 $\Delta = 17^\circ 59' 15''$  (LT)  
T = 56.58'  
L = 112.23'  
R = 357.50'  
C = 111.77'  
C.B. = S 29°16'20" E  
P.C. STA. = 45+28.86  
P.T. STA. = 46+41.09

ACCESS ROAD 01  
PROP. CURVE 1111-6  
PI STA. = 47+61.52  
 $\Delta = 36^\circ 45' 32''$  (RT)  
T = 80.57'  
L = 155.58'  
R = 242.50'  
C = 152.92'  
C.B. = S 19°53'11" E  
P.C. STA. = 46+80.95  
P.T. STA. = 48+36.53

LOT 100  
(BK. F, PG. 28)  
(BK. H, PG. 31)



L = 136.21'  
R = 1,029.66'  
CH = 136.11'  
CB = N 16°29'20" W

L = 147.44' N 20°16'45" W  
L = 145.00' S 20°16'43" E  
L = 182.48' S 20°16'44" E

L = 221.84'  
R = 2,371.50'  
CH = 221.79'  
CB = N 22°24'47" W

L = 225.20'  
R = 3,022.50'  
CH = 225.14'  
CB = S 22°24'47" E

L = 105.17'  
R = 335.00'  
CH = 104.74'  
CB = S 23°16'19" E

SW. COR. OF BLOCK 6 IN THE TOWN OF BROOKLYN PER P.B. 8825025TE N, PG. 2

TOWN OF BROOKLYN  
(P.B. N, PG. 2)

U.S. SURVEY 764

STATE OF ILLINOIS )  
COUNTY OF LEE )

I, COVENTINE FIDIS, AN ILLINOIS PROFESSIONAL LAND SURVEYOR, STATE THAT I HAVE SURVEYED THE PLAT OF HIGHWAY SHOWN HEREON AND THAT THIS PROFESSIONAL SERVICE CONFORMS TO THE CURRENT ILLINOIS MINIMUM STANDARDS FOR A BOUNDARY SURVEY FOR THE PROPOSED PARCEL(S) TO BE ACQUIRED BY THE STATE OF ILLINOIS, DEPARTMENT OF TRANSPORTATION, SHOWN HEREON.

DATED \_\_\_\_\_

COVENTINE FIDIS, PLS NO. 35-2159  
LICENSE EXPIRATION DATE: 11/30/2010



ILLINOIS DEPARTMENT OF TRANSPORTATION  
**PLAT OF HIGHWAYS**  
FAP ROUTE 999 (IL 3)  
SECTION **82-1B-2**  
ST. CLAIR COUNTY  
JOB NO. R-98-025-08  
STATION 00+00 TO STATION 00+00

SCALE: 1" = 50'

ILLINOIS DEPARTMENT OF TRANSPORTATION  
DIVISION OF HIGHWAYS/REGION 5/DISTRICT 8  
1102 EASTPORT PLAZA DRIVE  
COLLINGSVILLE, ILLINOIS 62234-6198

|   |         |                           |                    |           |
|---|---------|---------------------------|--------------------|-----------|
| F.A.P. RTE.                             | SECTION | COUNTY                    | TOTAL SHEETS       | SHEET NO. |
| 999                                     |         | ST. CLAIR                 | 81                 | 73        |
| COMPLETION DATE OF FIELD WORK PERFORMED |         |                           | CONTRACT NO. 78D61 |           |
| LAND SURVEY: 5/29/09                    |         | ROW STAKING:              |                    |           |
| FED. ROAD DIST. NO.                     |         | ILLINOIS FED. AID PROJECT |                    |           |

NOTE:  
AMEREN'S (UNION ELECTRIC COMPANY) PROPERTY HAS BEEN REVISED TO TEMPORARY EASEMENT ONLY. SEE PLAN SHEETS FOR REVISED EASEMENTS.