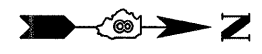


PART OF U.S. SURVEY 623, SECTION 2, T2N, R10W, OF THE 3RD PM, ST. CLAIR COUNTY, PART OF SECTION 35, T3N, R10W, MADISON COUNTY ILLINOIS

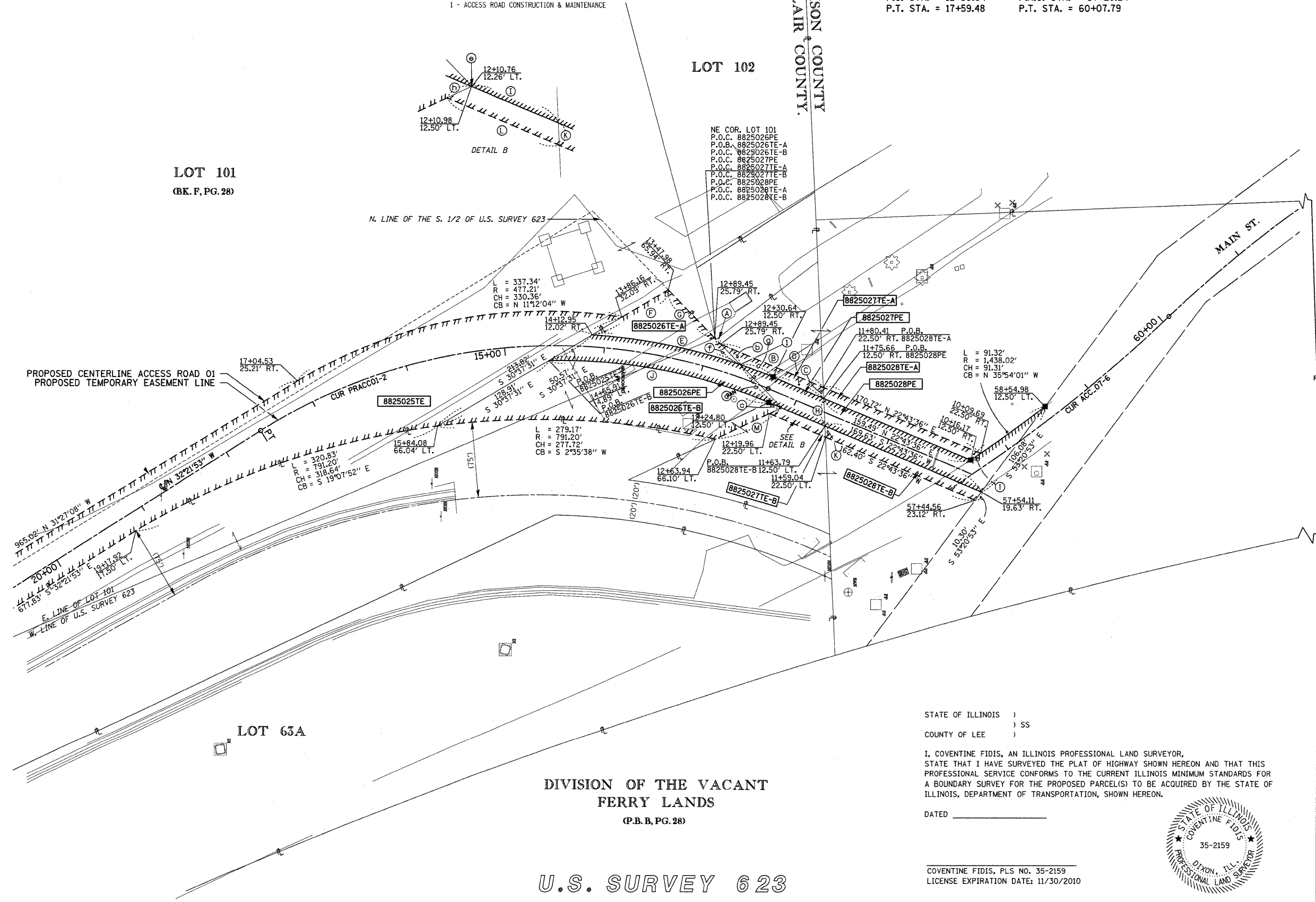
PARCEL NO.	OWNER	TOTAL HOLDING		FEE SIMPLE ACQUISITION		REMAINDER	EASEMENTS		PERMANENT TAX NUMBER	PROPERTY ACQUIRED BY
		ACRES	SQ. FT.	ACRES	SQ. FT.		ACRES	SQ. FT.		
8825026	THE KANSAS CITY SOUTHERN RAILWAY COMPANY TITLE REPORT SC-6015.0	0.5454	N/A	N/A	0.5454	PE 0.1151 TE-A 0.0902 TE-B 0.3401	PE 5,013 TE-A 3,930 TE-B 14,815	1	01-02.0-200-013	
8825027	THE KANSAS CITY SOUTHERN RAILROAD TITLE REPORT SC-6013.0	0.5079	N/A	N/A	0.5079	PE 0.0396 TE-A 0.0239 TE-B 0.0124	PE 1,725 TE-A 1,041 TE-B 541	1	01-02.0-200-010	
8825028	THE KANSAS CITY SOUTHERN RAILWAY COMPANY (formerly CMW Acquisition Corp., an Illinois Corp.) TITLE REPORT MA-4201.0	7.0357	N/A	N/A	7.0357	PE 0.1268 TE-A 0.0379 TE-B 0.0381	PE 5,522 TE-A 1,651 TE-B 1,660	1	21-2-19-35-00-000-902 (19-35-00)	

ACCESS ROAD 01
PROP. CURVE PRACC01-2
 PI STA. = 15+17.51
 $\Delta = 55^\circ 05' 29''$ (LT)
 T = 286.87'
 L = 528.84'
 R = 550.00'
 C = 508.70'
 C.B. = S $4^\circ 49' 08''$ E
 P.C. STA. = 12+30.64
 P.T. STA. = 17+59.48

ACCESS ROAD 07
PROP. CURVE ACC_07-6
 PI STA. = 58+68.95
 $\Delta = 11^\circ 00' 09''$ (LT)
 T = 159.70'
 L = 450.52'
 R = 450.52'
 C = 278.12'
 C.B. = S $5^\circ 15' 46''$ W
 P.R.C. STA. = 57+29.24
 P.T. STA. = 60+07.79



SPACE RESERVED FOR RECORDING OFFICER



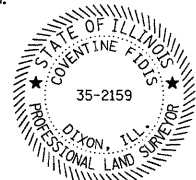
LEGEND

① 12+64.98 12.33' RT. P.O.B. 8825026PE	Ⓜ 73.24' S $25^\circ 20' 32''$ E
Ⓐ 8.23' N $45^\circ 52' 16''$ E	Ⓝ 28.67' S $45^\circ 52' 16''$ W
Ⓑ 11.68' N $22^\circ 43' 36''$ E	Ⓞ 13.82' S $22^\circ 43' 36''$ W
Ⓒ 11.07' S $87^\circ 19' 36''$ W	Ⓟ 59.77' N $45^\circ 52' 16''$ E
Ⓓ 54.98' N $22^\circ 43' 36''$ E	Ⓠ 0.32' S $25^\circ 20' 32''$ E
Ⓔ L = 151.23'	Ⓡ 36.90' N $45^\circ 52' 16''$ E
R = 572.00'	Ⓢ L = 35.12'
CH = 150.79'	R = 572.00'
CB = N $11^\circ 19' 30''$ E	CH = 35.11'
Ⓕ F 87.94' N $30^\circ 37' 31''$ W	CB = N $20^\circ 39' 28''$ E
Ⓖ 66.77' N $45^\circ 52' 16''$ E	Ⓣ 13.44' N $25^\circ 20' 32''$ E
Ⓗ 27.68' N $87^\circ 19' 36''$ E	Ⓤ L = 11.92'
Ⓘ 47.19' S $22^\circ 43' 36''$ W	R = 1,438.02'
Ⓚ L = 225.50'	CH = 11.92'
R = 537.00'	CB = S $34^\circ 19' 07''$ E
CH = 223.84'	Ⓤ L = 11.97'
CB = S $10^\circ 41' 49''$ W	R = 125.00'
Ⓛ 11.07' N $87^\circ 19' 36''$ E	CH = 11.96'
Ⓚ 60.92' S $22^\circ 43' 36''$ W	CB = S $33^\circ 59' 34''$ E
Ⓜ 73.24' S $25^\circ 20' 32''$ E	Ⓠ 76.20' N $87^\circ 19' 36''$ E
Ⓝ L = 40.60'	
R = 696.20'	
CH = 40.60'	
CB = N $23^\circ 01' 07''$ E	
Ⓞ 30.04' N $87^\circ 19' 36''$ E	

STATE OF ILLINOIS)
 COUNTY OF LEE)

I, COVENTINE FIDIS, AN ILLINOIS PROFESSIONAL LAND SURVEYOR, STATE THAT I HAVE SURVEYED THE PLAT OF HIGHWAY SHOWN HEREON AND THAT THIS PROFESSIONAL SERVICE CONFORMS TO THE CURRENT ILLINOIS MINIMUM STANDARDS FOR A BOUNDARY SURVEY FOR THE PROPOSED PARCEL(S) TO BE ACQUIRED BY THE STATE OF ILLINOIS, DEPARTMENT OF TRANSPORTATION, SHOWN HEREON.

DATED _____



COVENTINE FIDIS, PLS NO. 35-2159
 LICENSE EXPIRATION DATE: 11/30/2010

DIVISION OF THE VACANT FERRY LANDS
 (P.B.B. PG. 28)

U.S. SURVEY 623

ILLINOIS DEPARTMENT OF TRANSPORTATION
PLAT OF HIGHWAYS
 FAP ROUTE 999 (IL 3)
 SECTION 82-1B-2
 ST. CLAIR & MADISON COUNTY
 JOB NO. R-98-026-08
 STATION 00+00 TO STATION 00+00

SCALE: 1" = 50'

SHEET 8 OF 75

F.A.P. RTE.	SECTION	COUNTY	TOTAL SHEETS	SHEET NO.
999		ST. CLAIR	81	75
CONTRACT NO. 78D61				

FED. ROAD DIST. NO. ILLINOIS FED. AID PROJECT