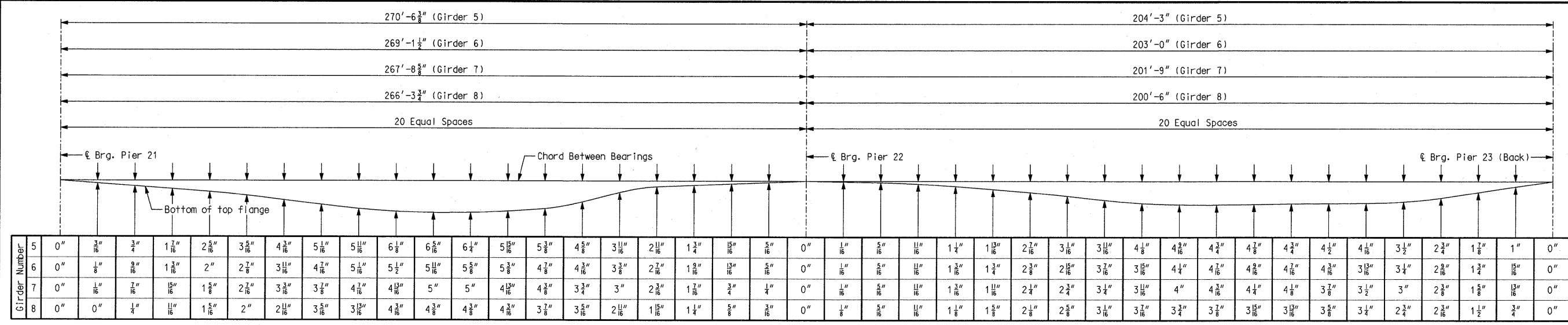
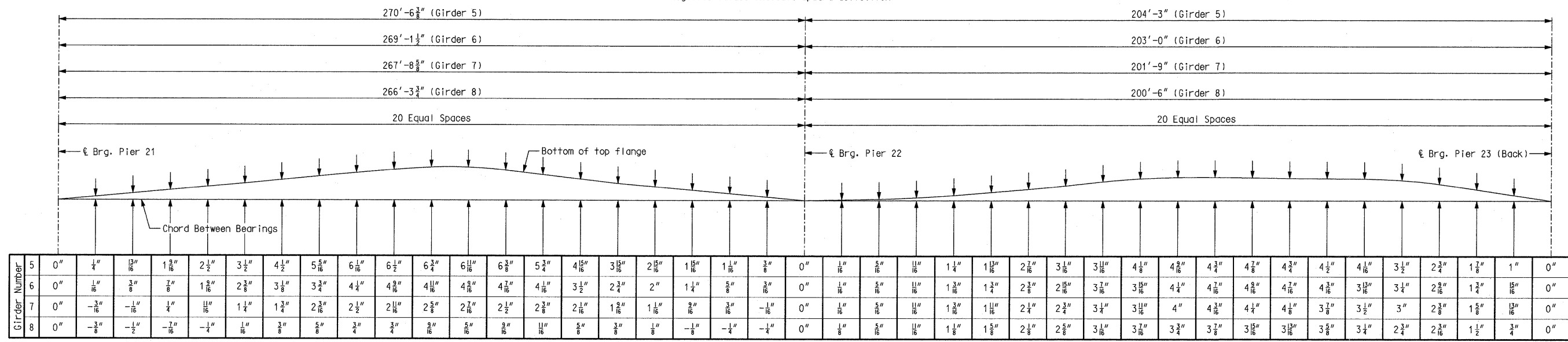


CONTRACT NO. 76D61	
F.A. ROUTE	SECTION
999	82-1B-2
FED. AID PROJECT ILLINOIS	
COUNTY	ST. CLAIR
USER NAME = jcolliff	
PLOT SCALE = #SCALE#	
PLOT DATE = 4/14/2010	
DESIGNED -	HNTB
CHECKED -	CMT
DRAWN -	CMT / HNTB
REVISED -	
REVISED -	
REVISED -	



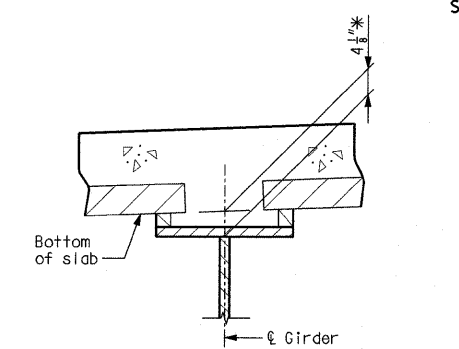
**DEAD LOAD DEFLECTIONS**

Notes:  
 32% of dead load deflection in span (21-22) and 27% of dead load deflection in Span (22-23) is due to the weight of structural steel.  
 Dead load deflection includes weight of structural steel, concrete slab, and barrier curbs.  
 Negative values indicate upward deflection.



**CAMBER DIAGRAM**

Notes:  
 Camber includes allowance for dead load deflection due to concrete slab, curbs, and structural steel.  
 Positive values are above the chord between bents and negative values are below the chord between bents.



\* Dimensions may vary if the girder camber after erection differs from plan camber by more or less than the 1/2% of Dead Load Deflection due to weight of structural steel. No payment will be made for any adjustment in forming or additional concrete required for variation in haunching.

**THEORETICAL SLAB HAUNCH**

**DEAD LOAD DEFLECTIONS AND CAMBER DIAGRAM EB - UNIT 2 (3 OF 3)**

Detailed JUL 2009  
 Checked JUL 2009

Note: This drawing is not to scale. Follow dimensions.

Sheet No. 75 of 152

STATE OF ILLINOIS  
 DEPARTMENT OF TRANSPORTATION  
 MISSOURI HIGHWAYS  
 AND TRANSPORTATION COMMISSION  
 ILLINOIS APPROACH STRUCTURE  
 FOR NEW I-70 MISSISSIPPI RIVER BRIDGE

**HNTB**  
 715 KIRK DRIVE  
 KANSAS CITY, MO 64105  
 TELEPHONE (816) 472-1201  
 CERTIFICATE OF AUTHORITY  
 NO. 001270

**CMT**  
 CRAWFORD, MURPHY & TILLY, INC.  
 2750 WEST WASHINGTON STREET  
 SPRINGFIELD, IL 62702  
 TELEPHONE (217) 787-8050  
 ENGINEERING CORPORATION - 000631