

F.A. ROUTE	SECTION
999	82-1B-2
FED. AID PROJECT	ILLINOIS
COUNTY	ST. CLAIR
USER NAME = jcolliff	
PLOT SCALE = #SCALE#	
PLOT DATE = 4/14/2010	

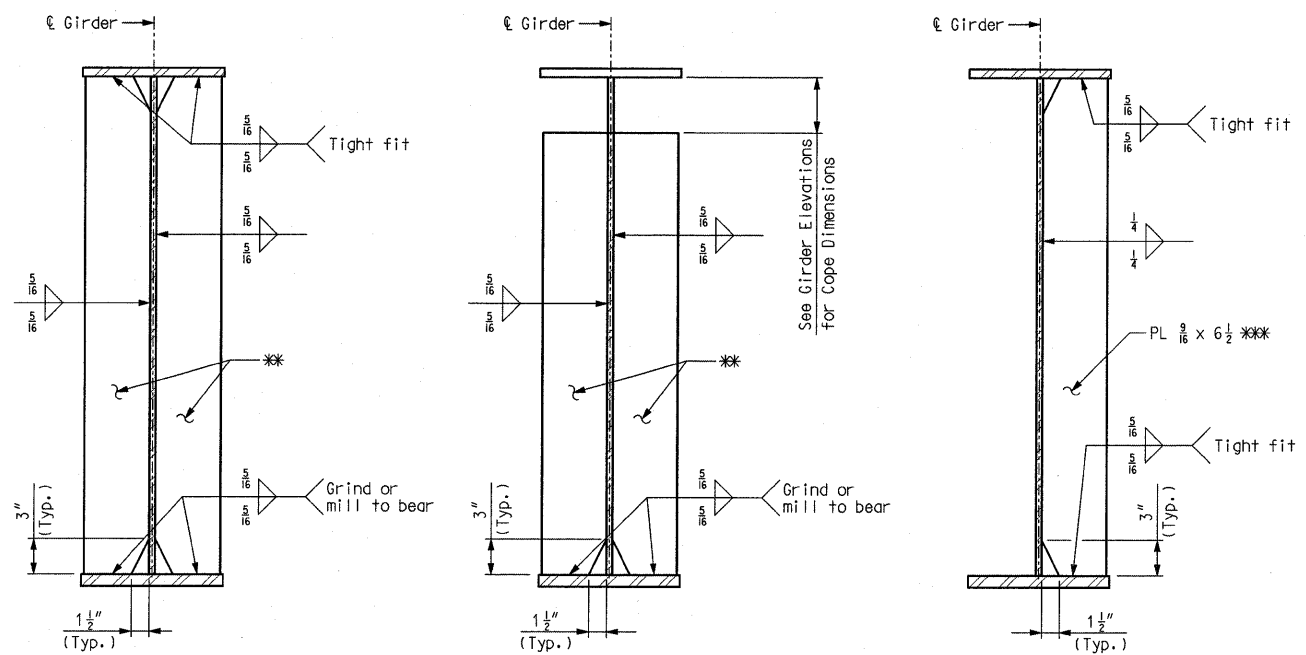
DESIGNED -	HNTB
CHECKED -	CMT
DRAWN -	CMT / HNTB
REVISED -	
REVISED -	
REVISED -	
REVISED -	

ILLINOIS APPROACH STRUCTURE FOR NEW I-70 MISSISSIPPI RIVER BRIDGE

STATE OF ILLINOIS
DEPARTMENT OF TRANSPORTATION
MISSOURI HIGHWAYS AND TRANSPORTATION COMMISSION

HNTB
715 KIRK DRIVE
KANSAS CITY, MO 64105
TELEPHONE (816) 472-1201
CERTIFICATE OF AUTHORITY
NO. 001270

CMT
CRAWFORD, MURPHY & TILLY, INC.
2750 WEST WASHINGTON STREET
SPRINGFIELD, IL 62702
TELEPHONE (217) 787-8050
ENGINEERING CORPORATION - 000631

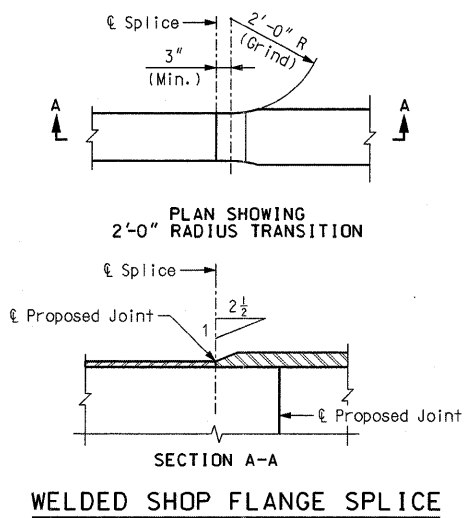


BEARING AND JACKING STIFFENER
PIERS 14, 15, 16, 18,
19, 20, 21, AND 22

**BEARING, JACKING AND
EXPANSION DEVICE STIFFENERS**
PIERS 13, 17, AND 23
WELDING DETAILS

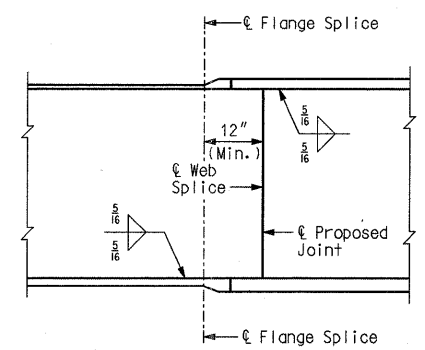
**INTERMEDIATE STIFFENER AND
INTERMEDIATE CROSS FRAME
CONNECTION PLATE**
*** Except as shown on Sheet No. 52.

Notes:
* For stiffener dimensions, see Girder Elevation Sheet Nos. 54 thru 63.
* Fabricated structural steel for bearing stiffeners, intermediate stiffeners, and connection plates, shall be ASTM A709 Grade 50W.
* Transverse web stiffeners shall be located as shown on the Framing Plan.



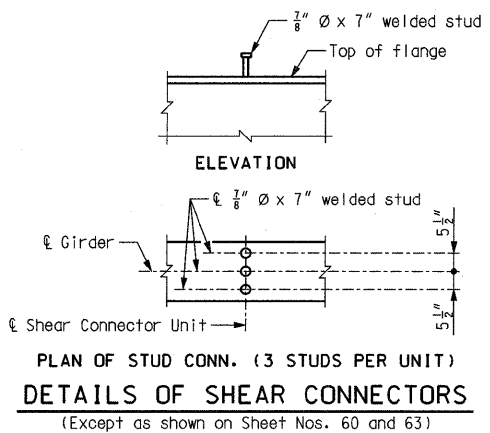
**PLAN SHOWING
2'-0" RADIUS TRANSITION**

**SECTION A-A
WELDED SHOP FLANGE SPLICE**



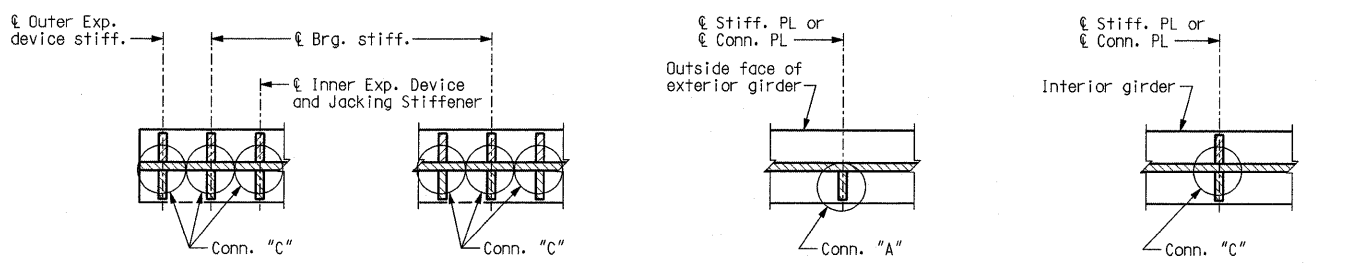
WELDED SHOP WEB SPLICE

Note:
Welded shop web and flange splices may be permitted when detailed on the shop drawings and approved by the engineer. No additional payment will be made for optional welded shop web and flange splices.



**PLAN OF STUD CONN. (3 STUDS PER UNIT)
DETAILS OF SHEAR CONNECTORS**
(Except as shown on Sheet Nos. 60 and 63)

Weight of 63,050 pounds of shear connectors is included in the weight of Fabricated Structural Low Alloy (Plate Girder) A709 Grade 50W. Shear connectors shall be in accordance with Sec 712, 1037, and 1080.



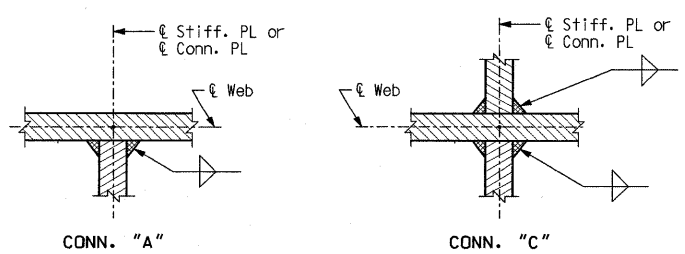
BEARING STIFFENER
PIERS 13, 17, AND 23

BEARING STIFFENER
PIERS 14, 15, 16, 18,
19, 20, 21, AND 22

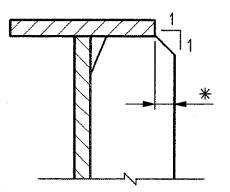
**INTERMEDIATE STIFFENER AND
INTERMEDIATE CROSS FRAME
CONNECTION PLATE**

**INTERMEDIATE STIFFENER AND
INTERMEDIATE CROSS FRAME
CONNECTION PLATE**

TYPICAL LOCATION DETAILS

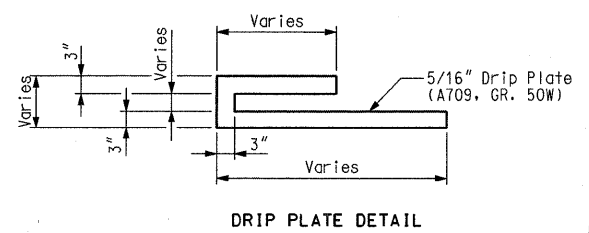


WELDING DETAILS

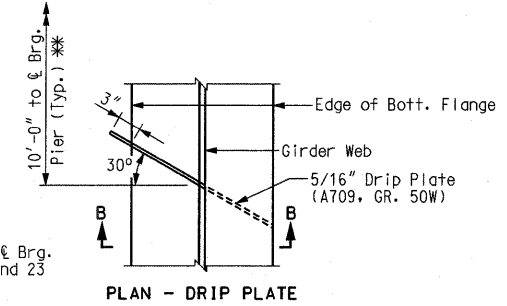


STIFFENER BEVEL DETAIL

* When dimension exceeds 1/2", bevel stiffener plate.

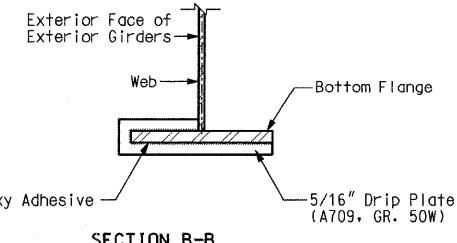


DRIP PLATE DETAIL



PLAN - DRIP PLATE

* 12'-0" to 12'-6" to Brg. Piers 17 and 23



SECTION B-B

DRIP PLATE DETAILS

Notes:
Girder 1 shown, Girder 8 opposite hand.
Drip plates shall be installed on suitably prepared surfaces after shop priming, using a two component epoxy suitable for structural steel under prolonged exposure. Plates shall be painted with the paint specified for structural steel.

STIFFENER AND MISCELLANEOUS STEEL DETAILS