

F.A. ROUTE	SECTION
999	82-1B-2
FED. AID PROJECT	ILLINOIS
COUNTY	ST. CLAIR
USER NAME = jelliff	
PLOT SCALE = #SCALE#	
PLOT DATE = 4/14/2010	
DESIGNED -	HNTB
CHECKED -	CMT
DRAWN -	CMT / HNTB
REVISED -	
REVISED -	
REVISED -	
REVISED -	

ILLINOIS APPROACH STRUCTURE FOR NEW I-70 MISSISSIPPI RIVER BRIDGE

STATE OF ILLINOIS
DEPARTMENT OF TRANSPORTATION

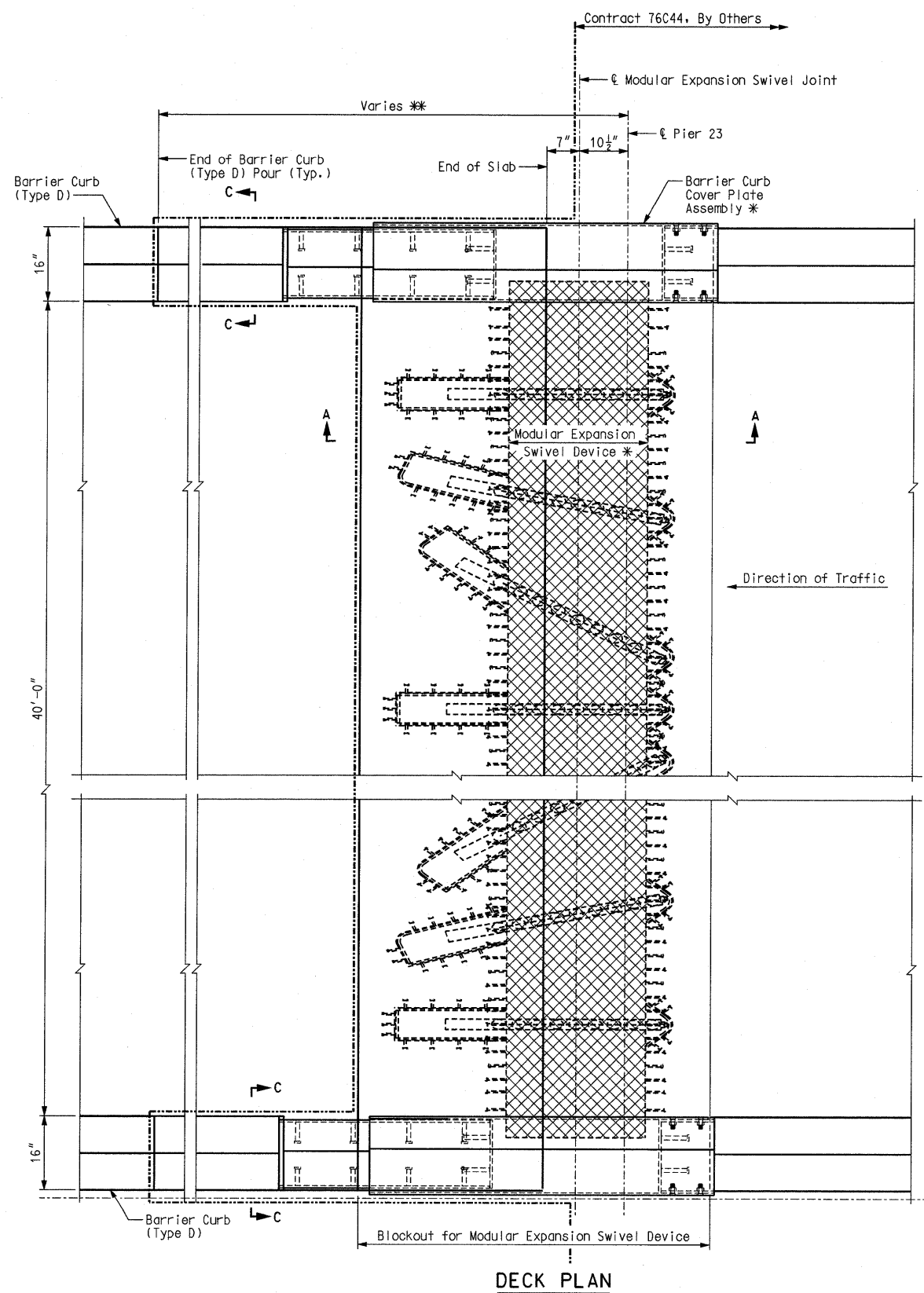
MISSOURI HIGHWAYS AND TRANSPORTATION COMMISSION

HNTB

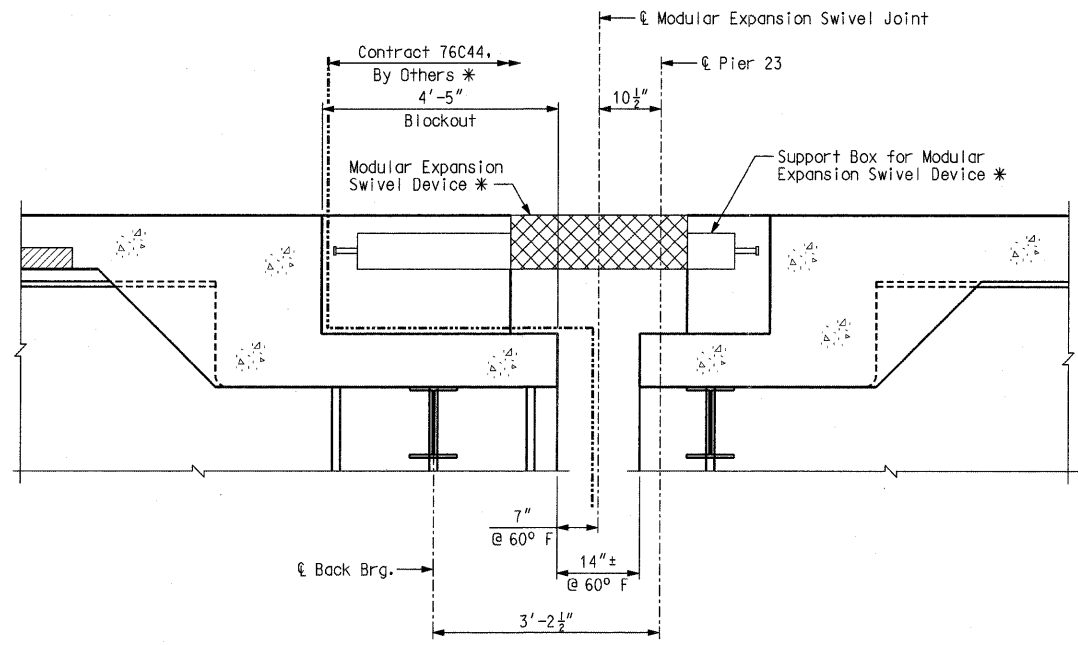
715 KIRK DRIVE
KANSAS CITY, MO 64105
TELEPHONE (816) 472-1201
CERTIFICATE OF AUTHORITY NO. 001270

CMT

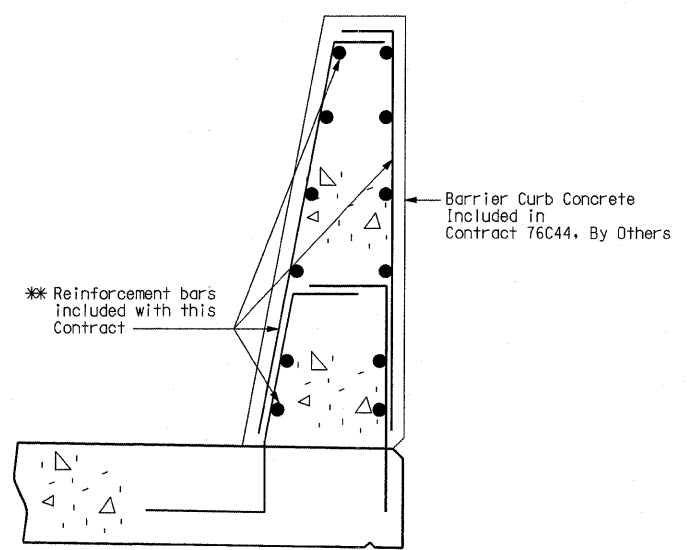
CRAWFORD, MURPHY & TILLY, INC.
2750 WEST WASHINGTON STREET
SPRINGFIELD, IL 62702
TELEPHONE (217) 787-8050
ENGINEERING CORPORATION - 000631



DECK PLAN



SECTION A-A



SECTION C-C
(Slab Superlevation not shown)

- Notes:
- For slab reinforcing at Expansion Joints, see Sheet No. 100.
 - * For details of Barrier Curb (Type D), see Sheet Nos. 109 thru 118.
 - * Barrier segment, barrier curb cover plate assembly, and Modular Expansion Swivel Joint included in Contract 76C44, By Others.