

F.A.U. RTE.	SECTION	COUNTY	TOTAL SHEETS	SHEET NO.
VAR. DIST 8 RESURFACING 2010-5		MADISON	57	1
		ILLINOIS	CONTRACT NO. 76D83	

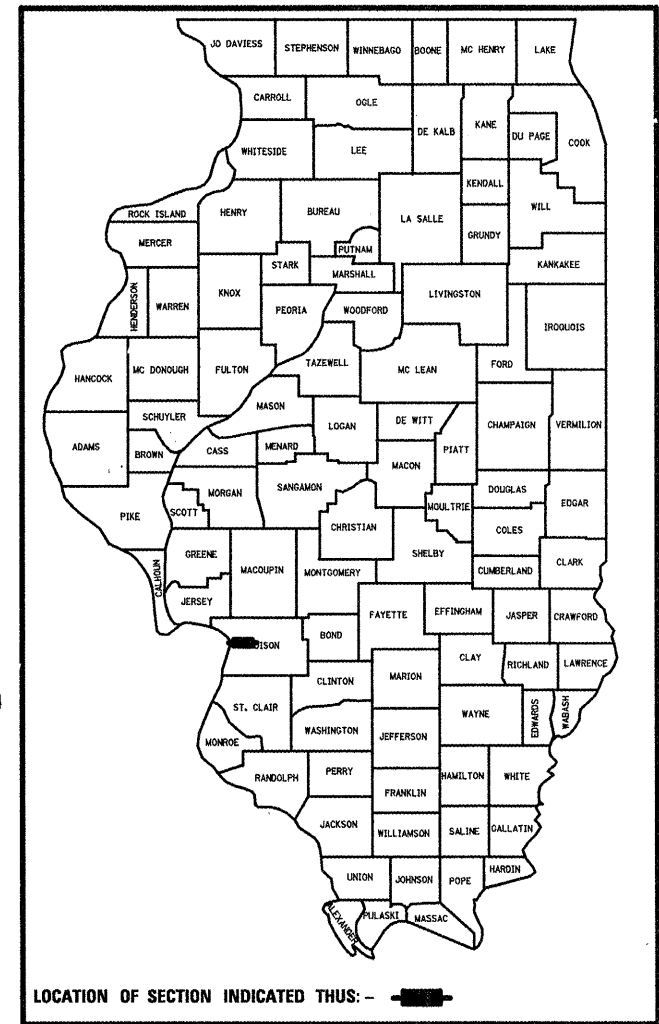
STATE OF ILLINOIS
DEPARTMENT OF TRANSPORTATION
DIVISION OF HIGHWAYS

**PROPOSED
HIGHWAY PLANS**

VARIOUS ROUTES
SECTION DIST 8 RESURFACING 2010-5
SIUE N. ACCESS RD & HAWTHORNE /MADISON AVE
MADISON COUNTY

C-98-064-10

D-98-051-10



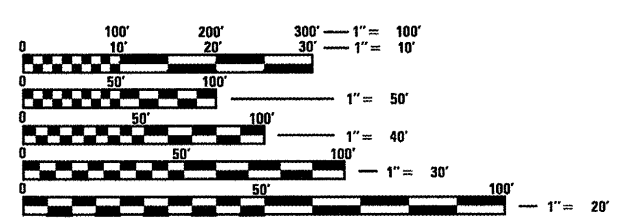
LOCATION OF SECTION INDICATED THIS: - [shaded box] -

INDEX OF SHEETS

1. COVER SHEET
2. GENERAL NOTES, STANDARDS, & COMMITMENTS
- 3.-4. SUMMARY OF QUANTITIES
- 5.-19. TYPICAL SECTIONS
- 20.-24. SCHEDULES
- 25.-26. LOCATION MAPS
- 27.-43. PLAN VIEWS
44. PAVEMENT MARKING DETAIL
- 45.-53. GUARDRAIL DETAILS
- 54.-55. ELECTRICAL DETAILS
56. FRENCH DRAIN DETAIL
57. MISCELLANEOUS DETAILS

SEE PAGES #24 & #25
OF 55 FOR OMISSIONS
AT INTERSECTIONS, RAILROAD
AND STRUCTURES.

SCALES

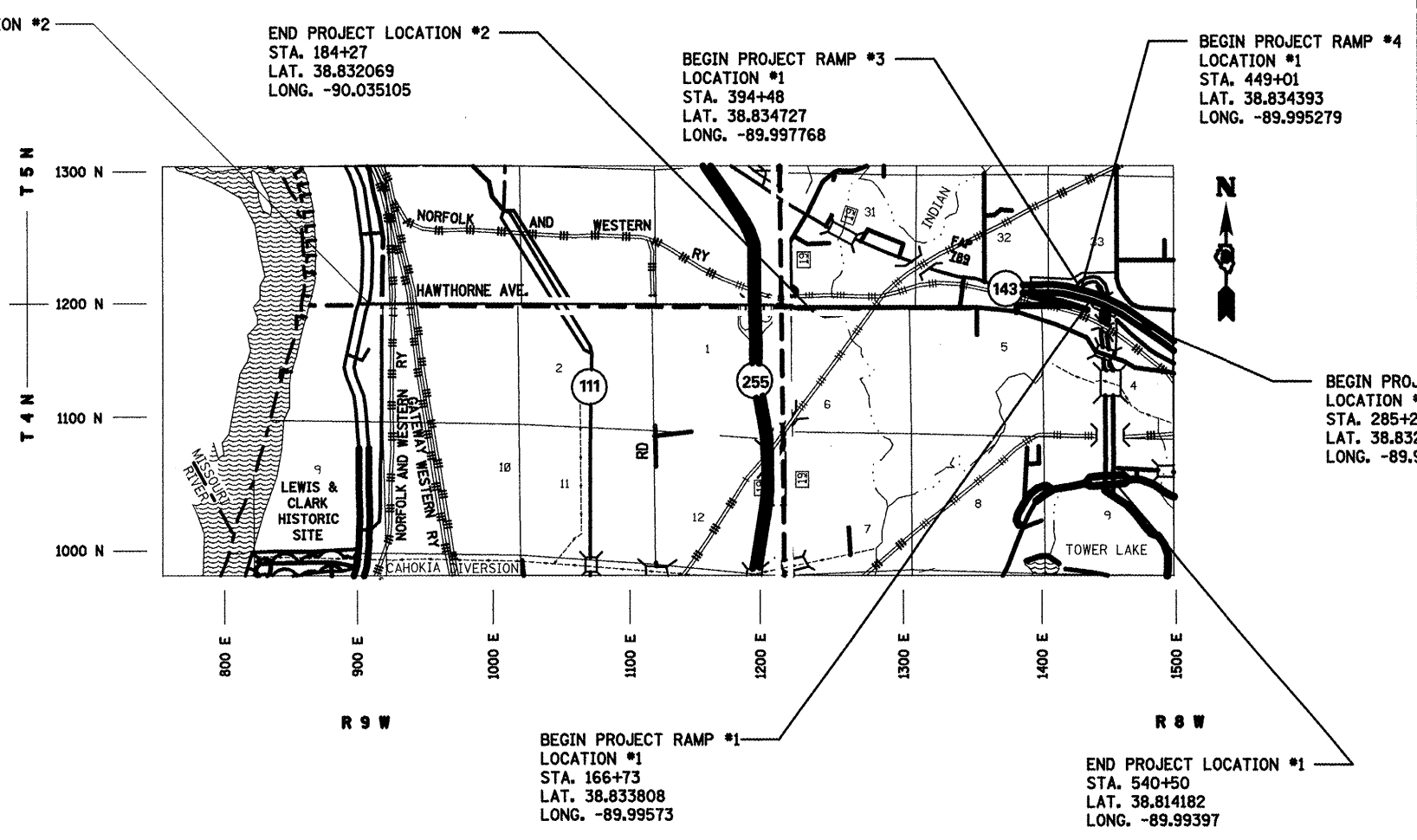


FULL SIZE PLANS HAVE BEEN PREPARED USING STANDARD
ENGINEERING SCALES. REDUCED SIZED PLANS WILL NOT
CONFORM TO STANDARD SCALES. IN MAKING MEASUREMENTS
ON REDUCED PLANS, THE ABOVE SCALES MAY BE USED.

J.U.L.I.E.
JOINT UTILITY LOCATION INFORMATION FOR EXCAVATION
1-800-892-0123
OR 811

PROJECT ENGINEER: TIM PADGETT 618-346-3325
PROJECT MANAGER: JOHN ADCOCK 618-346-3354

CONTRACT NO. 76D83



LOCATION #1
GROSS LENGTH = 9474 FT. = 1.79 MILE
NET LENGTH = 9043 FT. = 1.71 MILE

LOCATION #2
GROSS LENGTH = 18358 FT. = 3.48 MILE
NET LENGTH = 18232 FT. = 3.45 MILE

MAP NOT TO SCALE

STATE OF ILLINOIS
DEPARTMENT OF TRANSPORTATION
DIVISION OF HIGHWAYS

SUBMITTED March 17, 2010
Mr. C. Pami
DEPUTY DIRECTOR OF HIGHWAYS, REGION ENGINEER

April 9, 2010
Scott E. Stief, P.E.
ENGINEER OF DESIGN AND ENVIRONMENT

April 9, 2010
Christine M. Reed
DIRECTOR OF HIGHWAYS, CHIEF ENGINEER

**PRINTED BY THE AUTHORITY
OF THE STATE OF ILLINOIS**