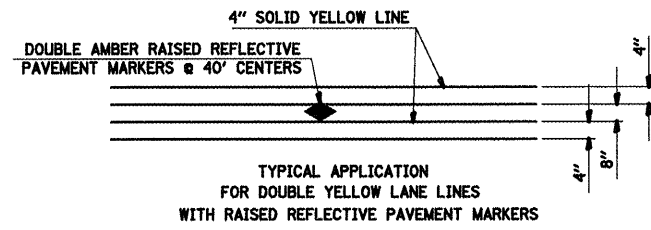
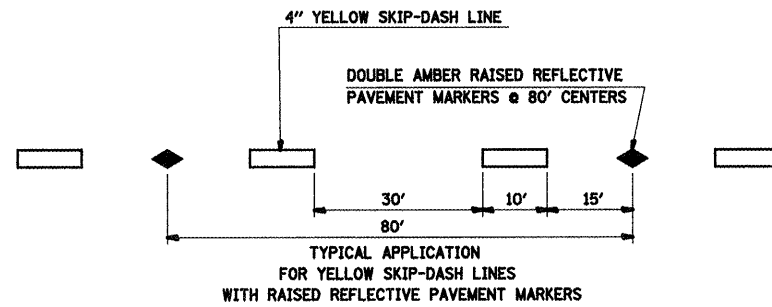


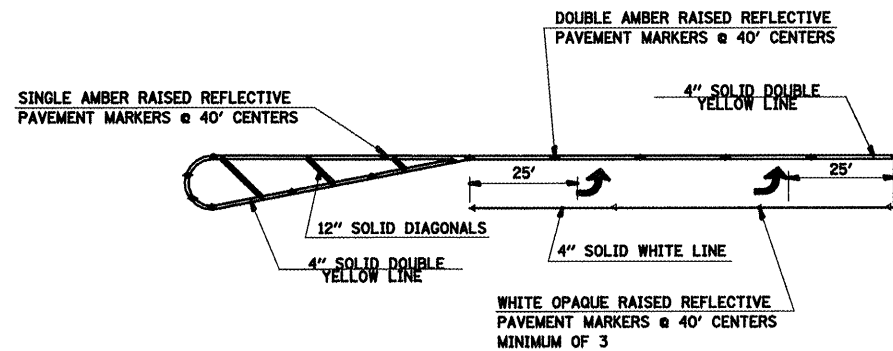
DETAIL 'A'
NOT TO SCALE



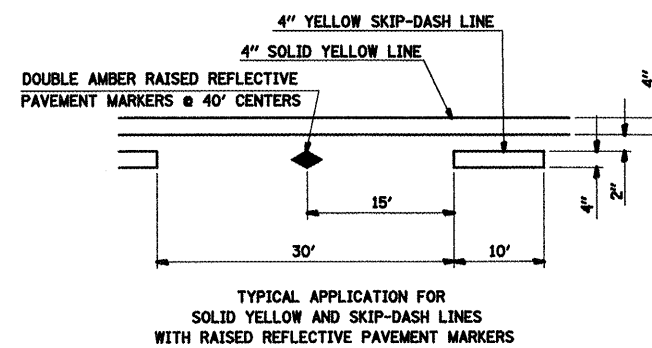
DETAIL 'B'



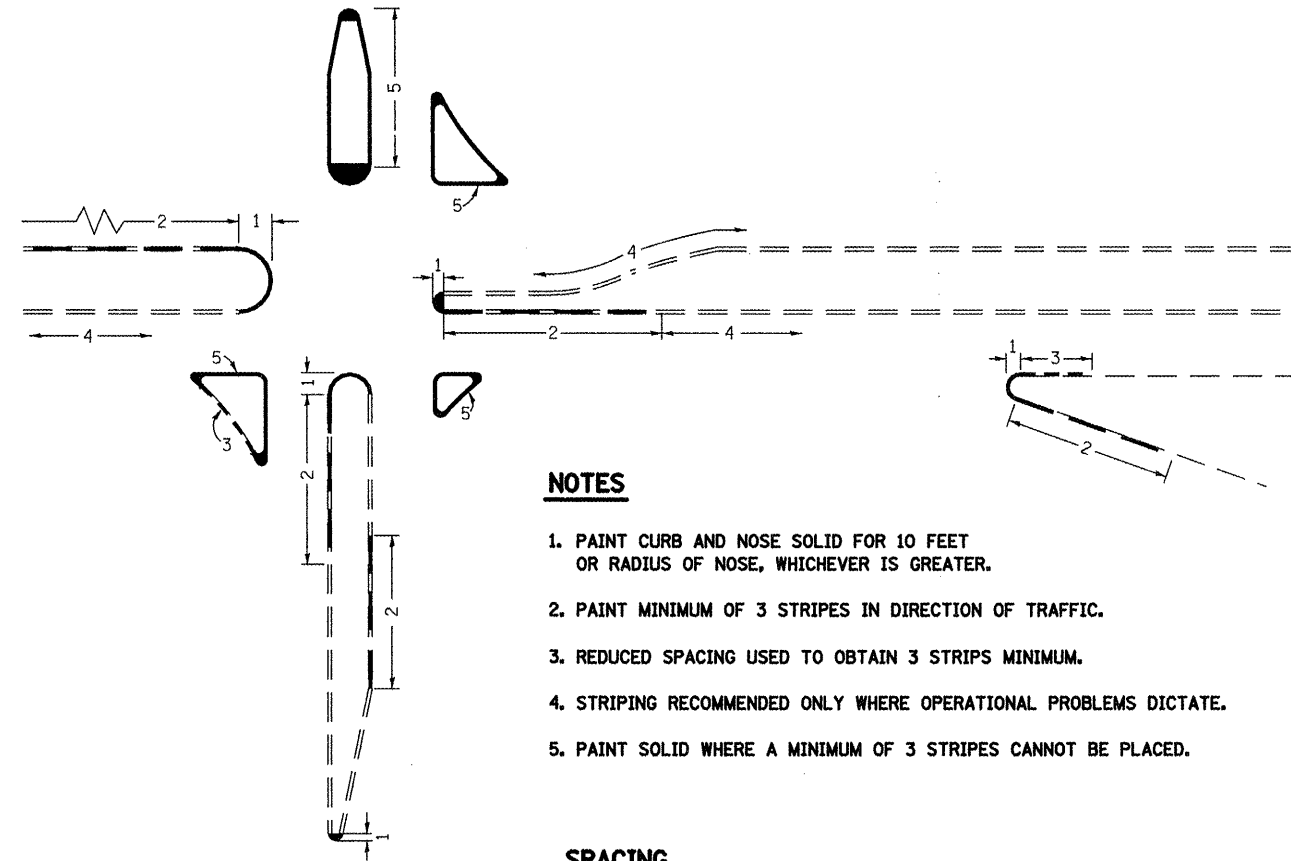
DETAIL 'C'



DETAIL 'E'



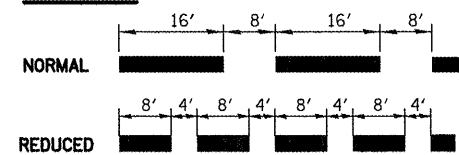
DETAIL 'D'



NOTES

1. PAINT CURB AND NOSE SOLID FOR 10 FEET OR RADIUS OF NOSE, WHICHEVER IS GREATER.
2. PAINT MINIMUM OF 3 STRIPES IN DIRECTION OF TRAFFIC.
3. REDUCED SPACING USED TO OBTAIN 3 STRIPS MINIMUM.
4. STRIPING RECOMMENDED ONLY WHERE OPERATIONAL PROBLEMS DICTATE.
5. PAINT SOLID WHERE A MINIMUM OF 3 STRIPES CANNOT BE PLACED.

SPACING



CURB MARKING

FILE NAME =	USER NAME = watersle	DESIGNED -	REVISED -
cs:\pwork\PWIDOT\WATERSLE\d8175033\48	6d83-eh-t-plan\dgn	DRAWN -	REVISED -
	PLOT SCALE = 1/8" = 100.0000' / IN.	CHECKED -	REVISED -
	PLOT DATE = 3/12/2010	DATE -	REVISED -

**STATE OF ILLINOIS
DEPARTMENT OF TRANSPORTATION**

PAVEMENT MARKING DETAILS	
SCALE: _____	SHEET NO. 1 OF 1 SHEETS
STA. _____	TO STA. _____

F.A. RTE.	SECTION	COUNTY	TOTAL SHEETS	SHEET NO.
VAR.	DIST. 8 RESURF. 2010-5	MADISON	57	44
CONTRACT NO. 76083				
FED. ROAD DIST. NO. 8 (ILLINOIS) FED. AID PROJECT				