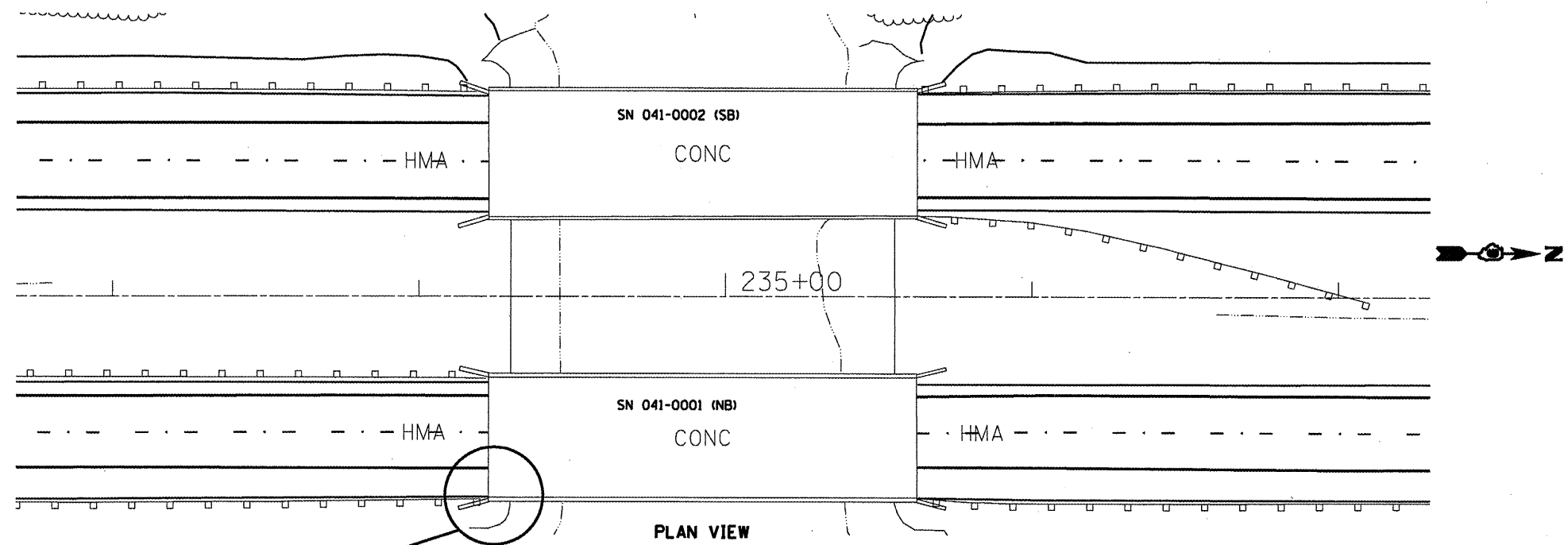
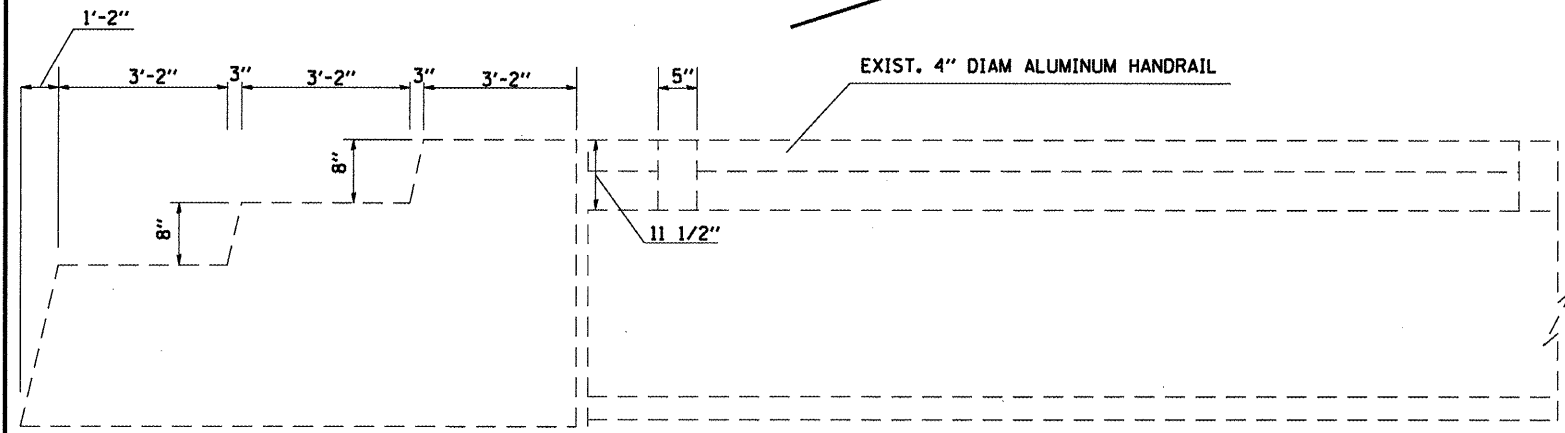


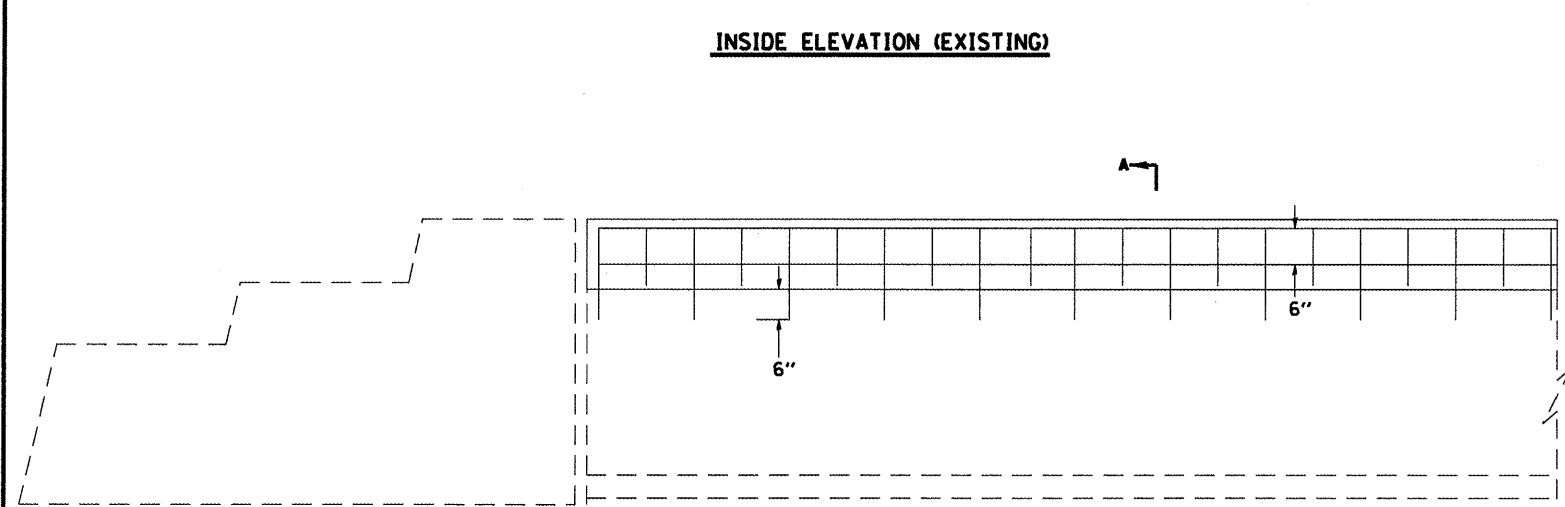
# PARAPET WALL MODIFICATION FOR TYPE 6 ATTACHMENT



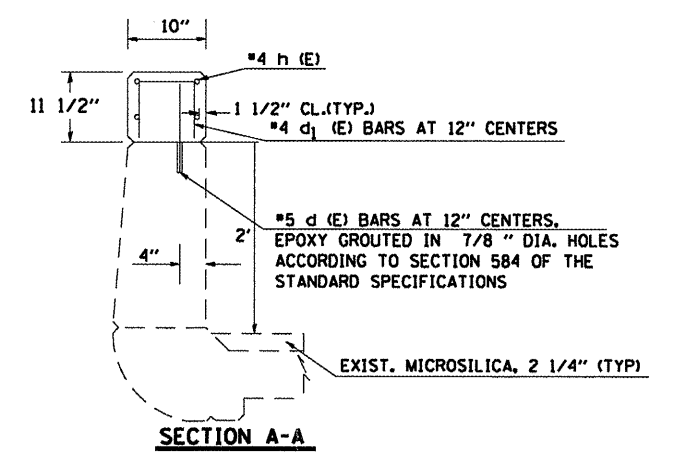
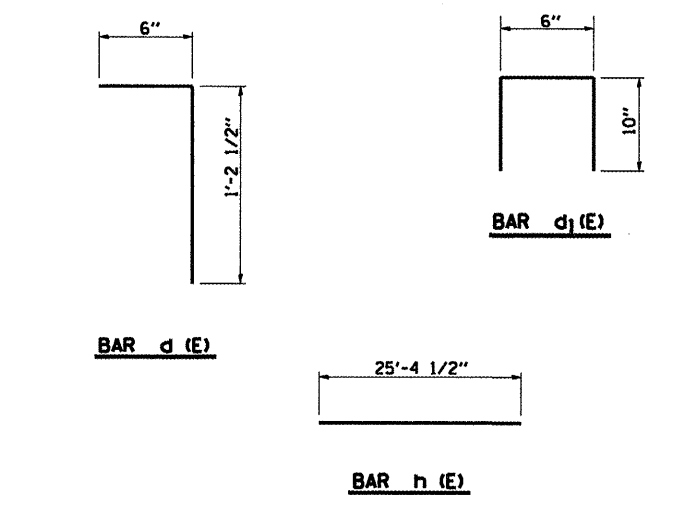
PLAN VIEW



INSIDE ELEVATION (EXISTING)



INSIDE ELEVATION (PROPOSED)



SECTION A-A

### BILL OF MATERIAL

BAR	SIZE	NO.	LENGTH	SHAPE
d (E)	#5	568	1'-10"	┌
d1 (E)	#4	568	2'-2"	┌
h (E)	#4	96	25'-4 1/2"	—
			CONCRETE SUPERSTRUCTURE	CU YDS 16.6
			REINFORCEMENT BARS EPOXY COATED	LBS 3535.5

**NOTES:**  
 QUANTITIES ARE FOR THE TOTAL 8 MODIFICATIONS.  
 ALL BARS SHALL BE EPOXY COATED.  
 IF NECESSARY, THE BARS MAY BE CUT IN THE FIELD.  
 THE COST OF CUTTING THE ALUMINUM HANDRAIL AND REMOVING THE BRACKETS SHALL BE INCLUDED IN THE COST OF HANDRAIL REMOVAL.

FILE NAME =	USER NAME = shepardgd	DESIGNED -	REVISED -
ca:\pw_work\pvidot\shepardgd\0172891\7876-sht-typical.dgn		DRAWN -	REVISED -
		CHECKED -	REVISED -
		DATE -	REVISED -

**STATE OF ILLINOIS  
 DEPARTMENT OF TRANSPORTATION**

**PARAPET WALL MODIFICATION FOR TYPE 6 ATTACHMENT**

SCALE: \_\_\_\_\_ SHEET NO. \_\_\_\_ OF \_\_\_\_ SHEETS STA. \_\_\_\_\_ TO STA. \_\_\_\_\_

F.A.I. RTE. 57	SECTION (41-11R-1)	COUNTY JEFFERSON	TOTAL SHEETS 47	SHEET NO. 44
CONTRACT NO. 78176			ILLINOIS FED. AID PROJECT	