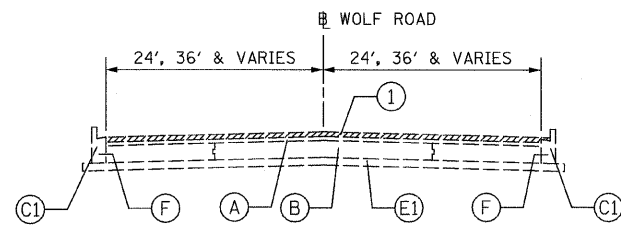
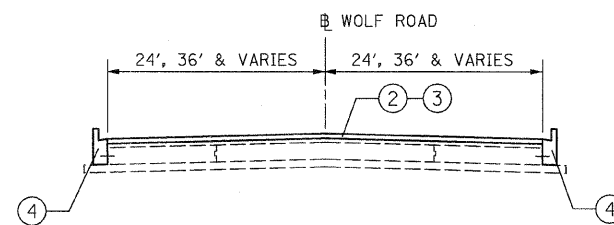


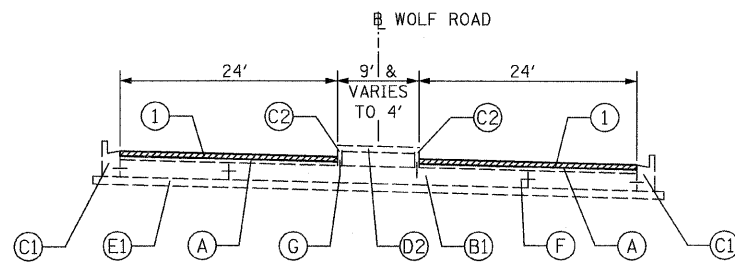
EXISTING TYPICAL SECTION
STA. 101+00 TO STA. 112+18



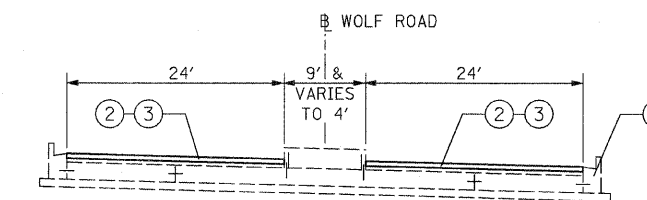
EXISTING TYPICAL SECTION
STA. 112+18 TO STA. 221+78
STA. 223+82 TO STA. 247+84
STA. 247+84 TO STA. 248+61 (BRIDGE OVER WELLER CREEK)
STA. 248+61 TO STA. 252+03



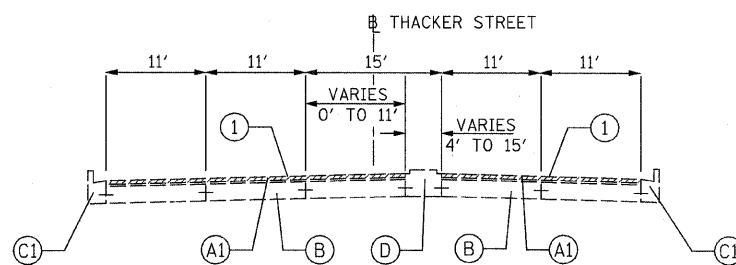
PROPOSED TYPICAL SECTION
STA. 112+18 TO STA. 221+78
STA. 223+82 TO STA. 247+84
STA. 247+84 TO STA. 248+61 (BRIDGE OVER WELLER CREEK)
STA. 248+61 TO STA. 252+03



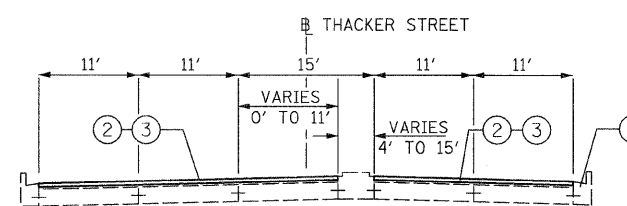
EXISTING TYPICAL SECTION
STA. 221+78 TO STA. 223+82



PROPOSED TYPICAL SECTION
STA. 221+78 TO STA. 223+82



THACKER STREET - EXISTING TYPICAL SECTION
STA. 10+00 TO STA. 15+53



THACKER STREET - PROPOSED TYPICAL SECTION
STA. 10+00 TO STA. 15+53

EXISTING CONDITIONS

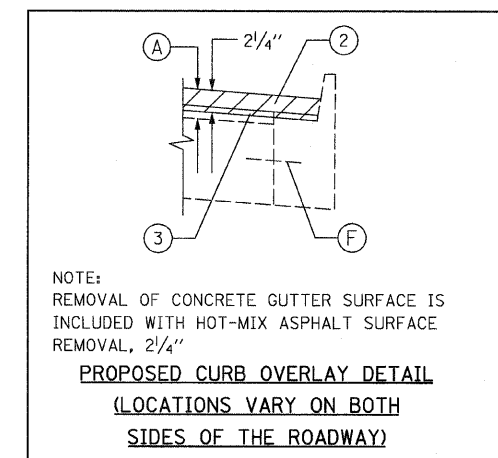
- (A) HOT-MIX ASPHALT SURFACE AND BINDER COURSE, VARIES 3" TO 4 1/4"
- (A1) HOT-MIX ASPHALT SURFACE AND BINDER COURSE, 3" & VARIES
- (B) P.C.C. BASE COURSE, 9" & VARIES
- (B1) P.C.C. PAVEMENT, 10" & VARIES
- (C) COMBINATION CONCRETE CURB & GUTTER, TYPE B-6.24
- (C1) COMBINATION CONCRETE CURB & GUTTER, TYPE B-6.12
- (C2) CONCRETE CURB, TYPE B6 (DOWELLED)
- (D) CONCRETE MEDIAN, CORRUGATED
- (D1) CONCRETE MEDIAN, CORRUGATED OR BARRIER, TYPE SB-6.18
- (D2) CONCRETE MEDIAN SURFACE, 4"
- (E) AGGREGATE SUBGRADE, 12"
- (E1) AGGREGATE SUBGRADE, 4"
- (F) TIE BARS
- (G) DOWEL BARS

PROPOSED IMPROVEMENTS

- (1) HOT-MIX ASPHALT SURFACE REMOVAL, 2 1/4"
- (2) HOT-MIX ASPHALT SURFACE COURSE, MIX "D", N70, 1 1/2"
- (3) POLYMERIZED LEVELING BINDER (MACHINE METHOD), IL-4.75, N50, 3/4"
- (4) COMB. CONCRETE CURB AND GUTTER REMOVAL AND REPLACEMENT
(AS DETERMINED BY THE ENGINEER)

NOTES:

- 1. THE CONTRACTOR SHALL PATCH FIRST BEFORE MILLING..



ROADWAY NAME	HOT-MIX ASPHALT MIXTURE REQUIREMENTS		
	MIXTURE TYPE	AC TYPE	AIR VOIDS
WOLF ROAD	HOT-MIX ASPHALT SURFACE COURSE, MIX "D", N70 (IL 9.5 mm)	PG 64-22	4% @ 70 GYR.
	POLYMERIZED LEVELING BINDER (MACHINE METHOD), IL-4.75, N50	SBS/SBR PG 76-28/-22	4% @ 50 GYR.
	CLASS D PATCHES (HMA BINDER IL-19 mm)	* PG 64-22	4% @ 70 GYR.
	HMA REPLACEMENT OVER PATCHES (HMA BINDER IL-19 mm)	* PG 64-22	4% @ 70 GYR.

* WHEN RAP EXCEEDS 20%, THE NEW ASPHALT BINDER IN THE MIX SHALL BE PG 58-22.
THE UNIT WEIGHT USED TO CALCULATE ALL HMA MIXTURE QUANTITIES IS 112 LBS/SQ YD/IN.

FILE NAME = D:\60F49-shr-typicals.dwg
PLOT DATE = 3/30/2009

CHRISTIAN-ROGE & ASSOCIATES, INC.
ENGINEERS-PLANNERS-SURVEYORS
211 WEST WACKER DRIVE
CHICAGO, ILLINOIS 60606
PHONE: (312)372-2023 FAX: (312)372-5274

DESIGNED - G.F.L.	REVISED -
DRAWN - B.K.	REVISED -
CHECKED - M.P.	REVISED -
DATE - MARCH 2009	REVISED -

STATE OF ILLINOIS
DEPARTMENT OF TRANSPORTATION

TYPICAL SECTIONS
WOLF ROAD AND THACKER STREET
SCALE: NONE SHEET NO. 1 OF 1 SHEETS STA. TO STA.

F.A.U. RTE. 2691	SECTION 3134 RS-3	COUNTY COOK	TOTAL SHEETS 33	SHEET NO. 4
FED. ROAD DIST. NO. 1 ILLINOIS FED. AID PROJECT				CONTRACT NO. 60F49