

STATE OF ILLINOIS  
DEPARTMENT OF TRANSPORTATION  
DIVISION OF HIGHWAYS

**PROPOSED  
HIGHWAY PLANS**

F.A.U. 1251 /2784 (WALKER AVENUE /SHERIDAN ROAD)  
SECTION: 2009-042 RS  
LAKEVIEW AVENUE TO CENTRAL AVENUE &  
MULBERRY PLACE TO LAKE COOK ROAD  
RESURFACING (3P)

LAKE COUNTY  
C-91-481-09

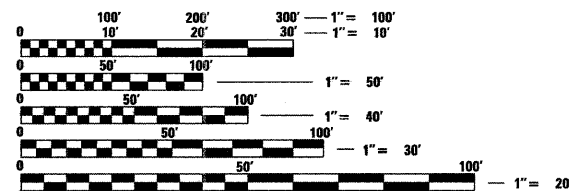
F.A.U. RTE.	SECTION	COUNTY	TOTAL SHEETS	SHEET NO.
1251/2784	2009-042 RS	LAKE	36	1
FED. ROAD DIST. NO. 1		ILLINOIS	CONTRACT NO. 60G49	

FOR INDEX OF SHEETS, SEE SHEET NO. 2

THESE IMPROVEMENTS ARE LOCATED  
WITHIN THE CITY OF HIGHLAND PARK

**TRAFFIC DATA**

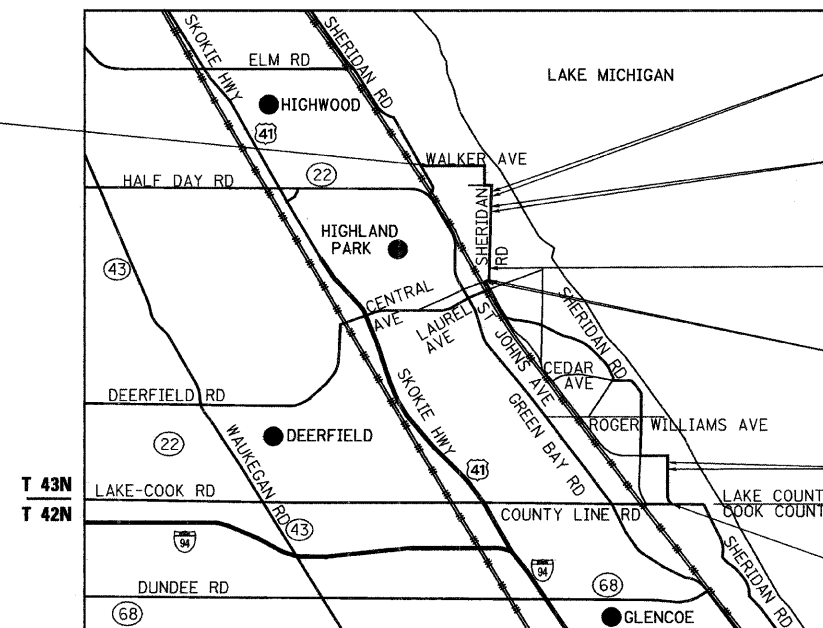
2007 ADT - 6,200  
POSTED SPEED LIMIT - 30 MPH



FULL SIZE PLANS HAVE BEEN PREPARED USING STANDARD ENGINEERING SCALES. REDUCED SIZED PLANS WILL NOT CONFORM TO STANDARD SCALES. IN MAKING MEASUREMENTS ON REDUCED PLANS, THE ABOVE SCALES MAY BE USED.

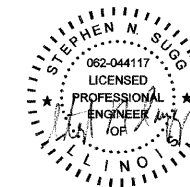
J.U.L.I.E.  
JOINT UTILITY LOCATION INFORMATION FOR EXCAVATION  
1-800-892-0123  
OR 811

**Ciorba Group, Inc.**  
DESIGN FIRM  
REGISTRATION NUMBER  
184-001016  
CONSULTING ENGINEERS  
SUITE 402, 5507 NORTH CUMBERLAND AVE  
CHICAGO, ILLINOIS 60656 ☎ (773) 775-4009

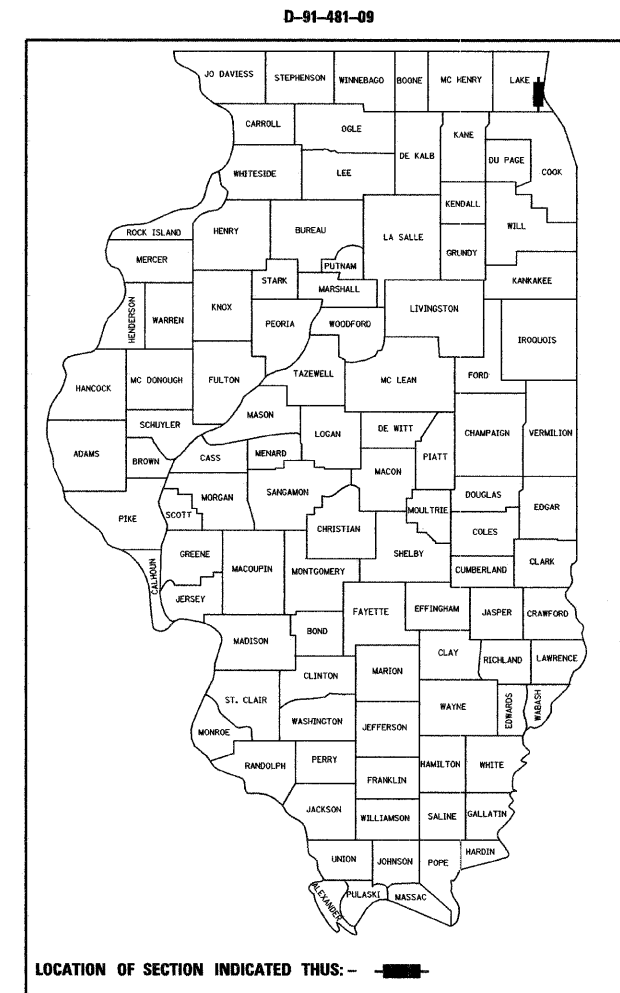


- STA. 147 + 50  
OMISSION  
STA. 150 + 12
- STA. 155 + 37  
OMISSION  
STA. 158 + 16
- STA. 189 + 83  
OMISSION  
STA. 189 + 91
- STA. 194 + 44  
OMISSION  
STA. 197 + 73
- STA. 347 + 61  
OMISSION  
STA. 349 + 72
- END PROJECT  
STA. 371 + 81

GROSS LENGTH OF PROJECT = 26,808 FT = 5.08 MI.  
NET LENGTH OF PROJECT = 25,719 FT = 4.87 MI.



DATE: 4/2/2009  
SEAL EXPIRES: 11/30/2009



STATE OF ILLINOIS  
DEPARTMENT OF TRANSPORTATION  
DIVISION OF HIGHWAYS  
SUBMITTED APRIL 6, 2009  
Diane M. O'Keefe  
DEPUTY DIRECTOR OF HIGHWAYS, REGION ENGINEER  
May 1, 2009  
Charles J. Ingersoll  
ENGINEER OF DESIGN AND ENVIRONMENT  
May 1, 2009  
Christine M. Reed  
DIRECTOR OF HIGHWAYS, CHIEF ENGINEER

**PRINTED BY THE AUTHORITY  
OF THE STATE OF ILLINOIS**

DISTRICT 1 DESIGN PLAN PREPARATION ENGINEER: K. ENG (847)705-4247

CONTRACT NO. 60G49