

|                     |                    |                    |              |           |
|---------------------|--------------------|--------------------|--------------|-----------|
| F.A. RTE.           | SECTION            | COUNTY             | TOTAL SHEETS | SHEET NO. |
| 3512                | (88 Y & 88-1Y)RS-4 | COOK               | 22           | 1         |
| FED. ROAD DIST. NO. | ILLINOIS           | CONTRACT NO. 60G61 |              |           |

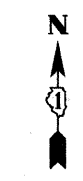
STATE OF ILLINOIS  
DEPARTMENT OF TRANSPORTATION  
DIVISION OF HIGHWAYS

**PROPOSED  
HIGHWAY PLANS**

FAU 3512 / US 14 (NORTHWEST HWY)  
HICKS RD. TO VAIL AVE.  
SECTION: (88 Y & 88-1Y) RS-4  
RESURFACING IMPROVEMENT  
COOK COUNTY  
C-91-517-09

FOR INDEX OF SHEETS, SEE SHEET NO. 2

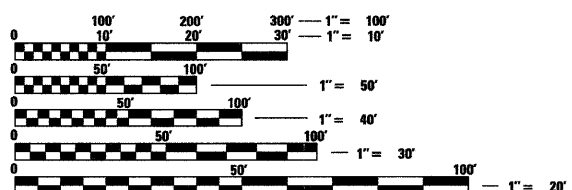
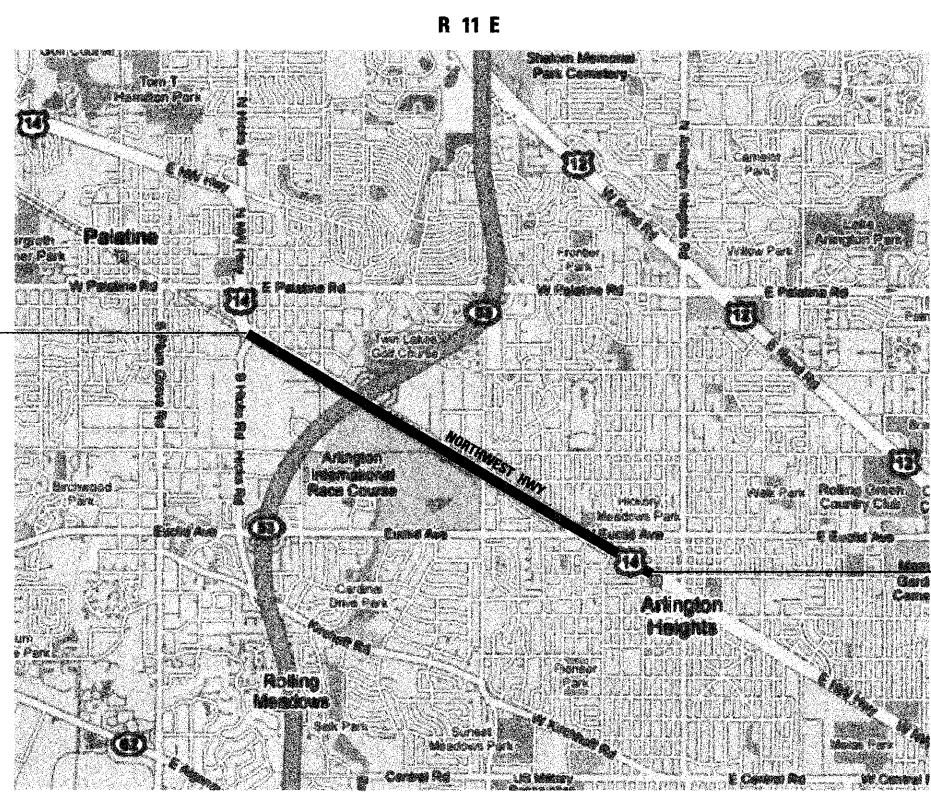
THE IMPROVEMENT IS LOCATED  
IN THE CITY OF ARLINGTON HEIGHTS



TRAFFIC DATA:  
2006 ADT= 22,100 VEHICLES PER DAY  
POSTED SPEED LIMITS:  
30 MPH FROM VAIL AVE. TO PATTON AVE.  
35 MPH FROM PATTON AVE. TO WILKE RD.  
40 MPH FROM WILKE RD. TO HICKS RD.

PROJECT BEGINS  
STA. 347 + 88.83

PROJECT ENDS  
STA. 498 + 36.57



FULL SIZE PLANS HAVE BEEN PREPARED USING STANDARD ENGINEERING SCALES. REDUCED SIZED PLANS WILL NOT CONFORM TO STANDARD SCALES. IN MAKING MEASUREMENTS ON REDUCED PLANS, THE ABOVE SCALES MAY BE USED.

J.U.L.I.E.  
JOINT UTILITY LOCATION INFORMATION FOR EXCAVATION  
1-800-892-0123  
OR 811

**benesch**  
alfred benesch & company  
Engineers • Surveyors • Planners  
205 North Michigan Avenue, Suite 2400  
Chicago, Illinois 60601  
312-565-0450

GROSS LENGTH OF IMPROVEMENT = 15,048 LINEAL FEET = 2.85 MILES  
NET LENGTH OF IMPROVEMENT = 15,048 LINEAL FEET = 2.85 MILES



STATE OF ILLINOIS  
DEPARTMENT OF TRANSPORTATION  
DIVISION OF HIGHWAYS

SUBMITTED APRIL 16, 2009  
Diana M. O'Keefe DEPUTY DIRECTOR OF HIGHWAYS, REGION ENGINEER  
May 1, 2009  
Charles J. Ingersoll ENGINEER OF DESIGN AND ENVIRONMENT  
May 1, 2009  
Christine M. Reed DIRECTOR OF HIGHWAYS, CHIEF ENGINEER

PRINTED BY THE AUTHORITY  
OF THE STATE OF ILLINOIS

CONSULTANT PROJECT ENGINEER: ISSAM RAYYAN (847) 705-4556

CONTRACT NO. 60G61

**INDEX OF SHEETS**

| SHEET NO. | DESCRIPTION  |
|-----------|--|
| 1         | COVER SHEET  |
| 2         | INDEX OF SHEETS, STATE STANDARDS & GENERAL NOTES                                       |
| 3         | SUMMARY OF QUANTITIES  |
| 4         | EXISTING AND PROPOSED TYPICAL SECTIONS   |
| 5-10      | ROADWAY AND PAVEMENT MARKING PLANS   |
| 11        | DETAILS FOR FRAMES AND LIDS ADJUSTMENT WITH MILLING (BD-8)                             |
| 12        | PAVEMENT PATCHING FOR HMA SURFACED PAVEMENT (BD-22)                                    |
| 13        | CURB OR CURB AND GUTTER REMOVAL AND REPLACEMENT (BD-24)                                |
| 14        | BUTT JOINT AND HMA TAPER DETAILS (BD-32)   |
| 15        | TRAFFIC CONTROL AND PROTECTION FOR SIDE ROADS INTERSECTIONS AND DRIVEWAYS, (TC-10)     |
| 16        | TYPICAL APPLICATIONS: RAISED REFLECTIVE PAVEMENT MARKERS (SNOW PLOW RESISTANT) (TC-11) |
| 17        | DISTRICT ONE TYPICAL PAVEMENT MARKINGS (TC-13)   |
| 18        | TRAFFIC CONTROL AND PROTECTION OF TURN BAYS (TO REMAIN OPEN TO TRAFFIC) (TC-14)        |
| 19        | PAVEMENT MARKING LETTERS AND SYMBOLS FOR TRAFFIC STAGING (TC-16)                       |
| 20        | ARTERIAL ROAD INFORMATION SIGN (TC-22)   |
| 21        | DRIVEWAY ENTRANCE SIGNING (TC-26)  |
| 22        | DISTRICT 1 DETECTOR LOOP INSTALLATION DETAILS FOR ROADWAY RESURFACING (TS-07)          |

**STATE STANDARDS**

| STANDARD NO. | DESCRIPTION  |
|--------------|--|
| 000001-05    | STANDARD SYMBOLS, ABBREVIATION AND PATTERNS                        |
| 424001-05    | CURB RAMPS FOR SIDEWALKS   |
| 442201-03    | CLASS C AND D PATCHES  |
| 604001-03    | FRAME AND LIDS TYPE 1  |
| 604086-02    | FRAME AND GRATE TYPE 23  |
| 604091-02    | FRAME AND GRATE TYPE 24  |
| 606001-04    | CONCRETE CURB TYPE B AND COMBINATION CONCRETE CURB AND GUTTER      |
| 701601-06    | URBAN LANE CLOSURE, MULTILANE, 1W OR 2W WITH NONTRAVERSABLE MEDIAN |
| 701606-06    | URBAN LANE CLOSURE, MULTILANE, 2W WITH MOUNTABLE MEDIAN            |
| 701701-06    | URBAN LANE CLOSURE, MULTILANE INTERSECTION                         |
| 701901-01    | TRAFFIC CONTROL DEVICES  |
| 780001-02    | TYPICAL PAVEMENT MARKINGS  |
| 781001-03    | TYPICAL APPLICATIONS RAISED REFLECTIVE PAVEMENT MARKERS            |

**GENERAL NOTES**

- BEFORE STARTING ANY EXCAVATION, THE CONTRACTOR SHALL CALL "JULIE" AT 1-800-892-0123 FOR FIELD LOCATIONS OF BURIED ELECTRIC, TELEPHONE AND GAS FACILITIES. (48 HOUR NOTIFICATION IS REQUIRED).
- 10 FEET TRANSITIONS SHALL BE USED TO MATCH PROPOSED CURB AND GUTTER AND MEDIAN ITEMS OF WORK TO EXISTING CURBS & GUTTERS AND MEDIANS IN THE FIELD, UNLESS OTHERWISE SHOWN. THE TRANSITIONS SHALL BE PAID FOR AT THE CONTRACT UNIT PRICE FOR THE PROPOSED ITEMS OF WORK SPECIFIED.
- THE CONTRACTOR SHALL COORDINATE CONSTRUCTION ACTIVITIES WITH UTILITY COMPANIES, CITY ARLINGTON HEIGHTS AND THE VILLAGE OF PALATINE.
- THE CONTRACTOR WILL NOT BE ALLOWED TO SET UP A YARD OR FIELD OFFICE ON STATE PROPERTY WITHOUT WRITTEN PERMISSION FROM THE DEPARTMENT.
- WHEN MILLED PAVEMENT IS OPEN TO TRAFFIC THE MAXIMUM GRADE DIFFERENTIAL BETWEEN PASSES OF THE MILLING MACHINE SHALL NOT EXCEED 1 1/2 INCHES WHERE THE SPEED LIMIT IS 45 MPH OR LESS AND 1 INCH WHERE THE SPEED LIMIT IS GREATER THAN 45 MPH. WITH WRITTEN APPROVAL FROM THE ENGINEER, A MAXIMUM GRADE DIFFERENTIAL OF 3 INCHES MAY BE ALLOWED IF THE EDGE OF THE MILLING IS SLOPED A MINIMUM 1:3 (V:H).
- BUTT JOINTS WILL BE INSTALLED AT THE ENDS OF ALL RESURFACING (WHERE RESURFACING MEETS EXISTING PAVEMENT). IN ACCORDANCE WITH THE "BUTT JOINT AND HMA TAPER DETAILS" SHEET INCLUDED IN THE PLANS, UNLESS OTHERWISE SPECIFIED.
- THE RESIDENT ENGINEER SHALL CONTACT CORY JUCIUS, TRAFFIC CONTROL SUPERVISOR AT (847) 705-4470 A MINIMUM OF 72 HOURS PRIOR TO THE PLACEMENT OF ANY TEMPORARY TRAFFIC CONTROL DEVICES.
- THE RESIDENT ENGINEER SHALL CONTACT WALLY CZARNY, AREA TRAFFIC FIELD ENGINEER AT 773-685-4342 AT LEAST (2) WEEKS PRIOR TO PLACEMENT OF PERMANENT PAVEMENT MARKINGS.
- ALL PAVEMENT MARKING SHALL BE PLACED THROUGHOUT THE PROJECT ACCORDING TO DISTRICT 1 TYPICAL PAVEMENT MARKING.
- ALL HMA PAVEMENT PATCHING SHALL BE CLASS D.
- ANY PAVEMENT MARKINGS AND RAISED REFLECTIVE PAVEMENT MARKERS OBLITERATED BY MILLING AND RESURFACING OPERATIONS ON SIDE STREETS AND ENTRANCES SHALL BE REPLACED AND PAID FOR IN KIND.
- BEFORE BEGINNING ANY WORK, THE CONTRACTOR SHALL RETAIN AND RECORD (FOR FUTURE REFERENCES), ALL EXISTING PAVEMENT MARKING LINES IN ORDER THAT THESE LOCATIONS CAN BE RE-ESTABLISHED FOR STRIPING. EXACT LOCATIONS OF ALL STRIPING SHALL BE AS DIRECTED BY THE ENGINEER.
- ALL PAVEMENT PATCHING LOCATIONS WILL BE DETERMINED IN THE FIELD BY THE ENGINEER.
- DRAINAGE ADJUSTMENT, CLEANING OR RECONSTRUCTION LOCATIONS WILL BE DETERMINED IN THE FIELD BY THE ENGINEER.
- THE CONTRACTOR SHALL BE REQUIRED TO PROVIDE ACCESS TO ABUTTING PROPERTY AT ALL TIMES DURING THE CONSTRUCTION OF THIS PROJECT.
- EXISTING BROKEN FRAMES AND LIDS SHALL BE REMOVED AND DISPOSED OF BY THE CONTRACTOR AND SHALL BE REPLACED AS DIRECTED BY THE ENGINEER. REPLACEMENT FRAMES AND LIDS WILL BE PAID FOR IN ACCORDANCE WITH ARTICLE 109.04 OF THE STANDARD SPECIFICATIONS UNLESS A SEPARATE PAY ITEM HAS BEEN PROVIDED.
- DO NOT SCALE PLANS FOR CONSTRUCTION DIMENSIONS. STATIONS ARE SHOWN FOR REFERENCE ONLY AND APPROXIMATE.
- WHEN ARTIFICIAL LIGHTING IS USED IN NIGHT OPERATIONS THE CONTRACTOR SHALL EXERCISE THE UTMOST PRECAUTIONS IN PREVENTING ADVERSE VISIBILITY TO THE MOTORING PUBLIC AND ADJOINING RESIDENTIAL AREAS.
- IT SHALL BE THE CONTRACTOR'S RESPONSIBILITY TO VERIFY ALL DIMENSIONS AND CONDITIONS EXISTING IN THE FIELD PRIOR TO CONSTRUCTION AND ORDERING OF MATERIALS.
- SAW CUTTING PRIOR TO ANY REMOVAL ITEMS NOTED ON THE PLANS OR DIRECTED BY THE ENGINEER SHALL BE CONSIDERED INCLUDED IN THE COST OF THE ITEMS BEING REMOVED.
- THE CONTRACTOR SHALL USE CARE IN REMOVING OR EXCAVATING NEAR ALL EXISTING ITEMS WHICH WILL REMAIN. ANY DAMAGE DONE TO EXISTING ITEMS BY THE CONTRACTOR SHALL BE REPAIRED AT THE CONTRACTOR'S EXPENSE.
- UNLESS OTHER CONDITIONS WARRANT, EXTENDED LANE CLOSURES SHALL BE AS DETERMINED AND APPROVED IN WRITING BY THE ENGINEER OR AS PROVIDED FOR IN THE CONTRACT SPECIFICATIONS. OVERNIGHT CLOSURES SHALL NOT BE ALLOWED FOR REHABILITATION PROJECTS INVOLVING DAYTIME MILLING AND RESURFACING OPERATIONS AND CLASS D PATCHING.
- PAVEMENT MARKING TAPE, TYPE III SHALL BE USED FOR SHORT TERM PAVEMENT MARKINGS AND TEMPORARY PAVEMENT MARKINGS ON ALL FINAL SURFACES. THE COST OF THE PAVEMENT MARKING TAPE, TYPE III SHALL BE INCLUDED IN THE COST OF SHORT TERM PAVEMENT MARKINGS AND TEMPORARY PAVEMENT MARKINGS.
- TEMPORARY RAMPS AT BUTT JOINTS SHALL BE INCLUDED IN THE COST OF THE BUTT JOINT AS SHOWN ON THE "BUTT JOINT AND HMA TAPER DETAILS" SHEET.
- MATCH EXISTING PAVEMENT MARKINGS AT THE PROJECT AND OMISSION LIMITS.
- PAY ITEM 55039700 - STORM SEWERS TO BE CLEANED - SHALL ONLY BE UTILIZED TO CLEAN STORM SEWER LATERAL PIPES BETWEEN INLETS OR CATCH BASINS AND MAIN SEWERS.
- ACCESS OR STORAGE OF MATERIALS WITHIN THE RAILROAD RIGHT OF WAY IS NOT PERMITTED WITHOUT PERMISSION FROM THE RAILROAD.

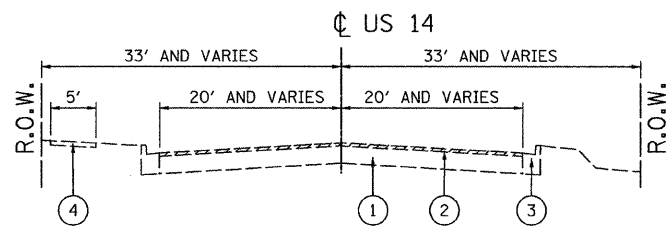
|   |                       |            |           |   |   |                    |      |    |                    |         |        |                 |              |
|---|-----------------------|------------|-----------|---|---|--------------------|------|----|--------------------|---------|--------|-----------------|--------------|
| FILE NAME =<br>...General\pin51709idx.dgn | USER NAME = gthiesse  | DESIGNED - | REVISED - | <b>STATE OF ILLINOIS<br/>DEPARTMENT OF TRANSPORTATION</b> | <b>INDEX OF SHEETS, STATE STANDARDS AND GENERAL NOTES<br/>US 14 - HICKS ROAD TO VAIL AVENUE</b> |                    |      |    | F.A.<br>RTE.       | SECTION | COUNTY | TOTAL<br>SHEETS | SHEET<br>NO. |
|   |                       | DRAWN -    | REVISED - |   | 3512  | (88 Y & 88-1Y)RS-4 | COOK | 22 | 2                  |         |        |                 |              |
|   | PLOT SCALE = N.T.S.   | CHECKED -  | REVISED - |   | SCALE: SHEET NO. OF SHEETS STA. TO STA.   |                    |      |    | CONTRACT NO. 60661 |         |        |                 |              |
|   | PLOT DATE = 4/17/2009 | DATE -     | REVISED - |   | FED. ROAD DIST. NO. ILLINOIS FED. AID PROJECT   |                    |      |    |                    |         |        |                 |              |

| SUMMARY OF QUANTITIES |  |        | 1001 STATE 1000  |                        |
|-----------------------|--|--------|------------------|------------------------|
| CODE NO.              | ITEM DESCRIPTION   | UNIT   | TOTAL QUANTITIES | CONSTRUCTION TYPE CODE |
| 35501308              | HOT-MIX ASPHALT BASE COURSE, 6"                              | SQ YD  | 5                | 5                      |
| 35501316              | HOT-MIX ASPHALT BASE COURSE, 8"                              | SQ YD  | 20               | 20                     |
| 40600100              | BITUMINOUS MATERIALS (PRIME COAT)                            | GALLON | 9,402            | 9,402                  |
| 40600300              | AGGREGATE (PRIME COAT)                                       | TON    | 188              | 188                    |
| 40600400              | MIXTURE FOR CRACKS, JOINTS, AND FLANGEWAYS                   | TON    | 11               | 11                     |
| 40600895              | CONSTRUCTING TEST STRIP                                      | EACH   | 2                | 2                      |
| 40600982              | HOT-MIX ASPHALT SURFACE REMOVAL - BUTT JOINT                 | SQ YD  | 640              | 640                    |
| 40603310              | HOT-MIX ASPHALT SURFACE COURSE, MIX "C", N50                 | TON    | 3                | 3                      |
| 40603340              | HOT-MIX ASPHALT SURFACE COURSE, MIX "D", N70                 | TON    | 7,898            | 7,898                  |
| 42300400              | PORTLAND CEMENT CONCRETE DRIVEWAY PAVEMENT, 8 INCH           | SQ YD  | 24               | 24                     |
| 42400100              | PORTLAND CEMENT CONCRETE SIDEWALK 4 INCH                     | SQ FT  | 20               | 20                     |
| 42400800              | DETECTABLE WARNINGS  | SQ FT  | 10               | 10                     |
| 44000159              | HOT-MIX ASPHALT SURFACE REMOVAL, 2 1/2"                      | SQ YD  | 94,024           | 94,024                 |
| 44000200              | DRIVEWAY PAVEMENT REMOVAL                                    | SQ YD  | 49               | 49                     |
| 44000600              | SIDEWALK REMOVAL   | SQ FT  | 20               | 20                     |
| 44001700              | COMBINATION CONCRETE CURB AND GUTTER REMOVAL AND REPLACEMENT | FOOT   | 858              | 858                    |
| 44003100              | MEDIAN REMOVAL   | SQ FT  | 1,370            | 1,370                  |
| 44201785              | CLASS D PATCHES, TYPE I, 12 INCH                             | SQ YD  | 10               | 10                     |
| 44201789              | CLASS D PATCHES, TYPE II, 12 INCH                            | SQ YD  | 58               | 58                     |
| 44201794              | CLASS D PATCHES, TYPE III, 12 INCH                           | SQ YD  | 35               | 35                     |
| 44201796              | CLASS D PATCHES, TYPE IV, 12 INCH                            | SQ YD  | 133              | 133                    |
| 55039700              | STORM SEWERS TO BE CLEANED                                   | FOOT   | 3,483            | 3,483                  |
| 60252800              | CATCH BASINS TO BE RECONSTRUCTED                             | EACH   | 3                | 3                      |
| 60257900              | MANHOLES TO BE RECONSTRUCTED                                 | EACH   | 2                | 2                      |
| 60300205              | FRAMES AND GRATES TO BE ADJUSTED (SPECIAL)                   | EACH   | 6                | 6                      |
| 60300310              | FRAMES AND LIDS TO BE ADJUSTED (SPECIAL)                     | EACH   | 82               | 82                     |
| 60404940              | FRAMES AND GRATES, TYPE 23                                   | EACH   | 11               | 11                     |
| 60404950              | FRAMES AND GRATES, TYPE 24                                   | EACH   | 11               | 11                     |
| 60406000              | FRAMES AND LIDS, TYPE 1, OPEN LID                            | EACH   | 11               | 11                     |

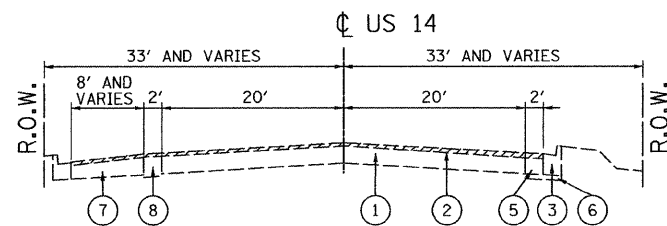
\* SPECIALTY ITEM

| SUMMARY OF QUANTITIES |  |        | 1001 STATE 1000  |                        |
|-----------------------|--|--------|------------------|------------------------|
| CODE NO.              | ITEM DESCRIPTION   | UNIT   | TOTAL QUANTITIES | CONSTRUCTION TYPE CODE |
| 60406100              | FRAMES AND LIDS, TYPE 1, CLOSED LID                        | EACH   | 11               | 11                     |
| 60618300              | CONCRETE MEDIAN SURFACE, 4 INCH                            | SQ FT  | 152              | 152                    |
| 67000400              | ENGINEER'S FIELD OFFICE, TYPE A                            | CAL MO | 8                | 8                      |
| 67100100              | MOBILIZATION   | L SUM  | 1                | 1                      |
| 70102625              | TRAFFIC CONTROL AND PROTECTION, STANDARD 701606            | L SUM  | 1                | 1                      |
| 70102630              | TRAFFIC CONTROL AND PROTECTION, STANDARD 701601            | L SUM  | 1                | 1                      |
| 70102635              | TRAFFIC CONTROL AND PROTECTION, STANDARD 701701            | L SUM  | 1                | 1                      |
| 70300100              | SHORT-TERM PAVEMENT MARKING                                | FOOT   | 20,400           | 20,400                 |
| 70300210              | TEMPORARY PAVEMENT MARKING - LETTERS AND SYMBOLS           | SQ FT  | 894              | 894                    |
| 70300220              | TEMPORARY PAVEMENT MARKING - LINE 4"                       | FOOT   | 40,801           | 40,801                 |
| 70300240              | TEMPORARY PAVEMENT MARKING - LINE 6"                       | FOOT   | 3,120            | 3,120                  |
| 70300250              | TEMPORARY PAVEMENT MARKING - LINE 8"                       | FOOT   | 1,285            | 1,285                  |
| 70300260              | TEMPORARY PAVEMENT MARKING - LINE 12"                      | FOOT   | 3,268            | 3,268                  |
| 70300280              | TEMPORARY PAVEMENT MARKING - LINE 24"                      | FOOT   | 825              | 825                    |
| * 78000100            | THERMOPLASTIC PAVEMENT MARKING - LETTERS AND SYMBOLS       | SQ FT  | 894              | 894                    |
| * 78000200            | THERMOPLASTIC PAVEMENT MARKING - LINE 4"                   | FOOT   | 40,801           | 40,801                 |
| * 78000400            | THERMOPLASTIC PAVEMENT MARKING - LINE 6"                   | FOOT   | 3,120            | 3,120                  |
| * 78000500            | THERMOPLASTIC PAVEMENT MARKING - LINE 8"                   | FOOT   | 1,285            | 1,285                  |
| * 78000600            | THERMOPLASTIC PAVEMENT MARKING - LINE 12"                  | FOOT   | 3,268            | 3,268                  |
| * 78000650            | THERMOPLASTIC PAVEMENT MARKING - LINE 24"                  | FOOT   | 825              | 825                    |
| * 78100100            | RAISED REFLECTIVE PAVEMENT MARKER                          | EACH   | 808              | 808                    |
| * 81900200            | TRENCH AND BACKFILL FOR ELECTRICAL WORK                    | FOOT   | 155              | 155                    |
| * 88600600            | DETECTOR LOOP REPLACEMENT                                  | FOOT   | 2,772            | 2,772                  |
| X0322256              | TEMPORARY INFORMATION SIGNING                              | SQ FT  | 308              | 308                    |
| X4067107              | POLYMERIZED LEVELING BINDER (MACHINE METHOD), IL-4.75, N50 | TON    | 4,936            | 4,936                  |
| XX002873              | BRICK SIDEWALK REMOVAL                                     | SQ FT  | 38               | 38                     |
| XX004688              | BRICK PAVER SIDEWALK                                       | SQ FT  | 38               | 38                     |
| Z0018500              | DRAINAGE STRUCTURES TO BE CLEANED                          | EACH   | 11               | 11                     |

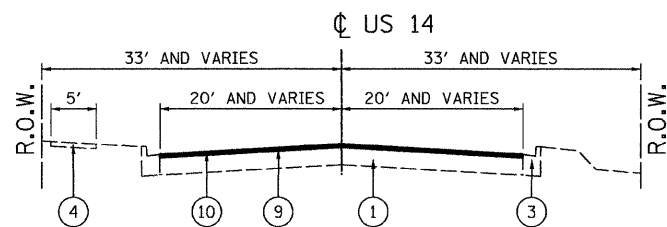
|   |                       |            |           |   |  |   |                                  |                |                       |                   |
|---|-----------------------|------------|-----------|---|--|---|----------------------------------|----------------|-----------------------|-------------------|
| FILE NAME =<br>...General\p\In51709sq.dgn | USER NAME = gthiesse  | DESIGNED - | REVISED - | <b>STATE OF ILLINOIS<br/>DEPARTMENT OF TRANSPORTATION</b> | <b>SUMMARY OF QUANTITIES<br/>US 14 - HICKS ROAD TO VAIL AVENUE</b> | F.A.<br>RTE.<br>3512                          | SECTION<br>(88 Y & 88-1YRS-4)    | COUNTY<br>COOK | TOTAL<br>SHEETS<br>22 | SHEET<br>NO.<br>3 |
|   | PLOT SCALE = N.T.S.   | CHECKED -  | REVISED - |   |  | CONTRACT NO. 60661                            |                                  |                |                       |                   |
|   | PLOT DATE = 4/17/2009 | DATE -     | REVISED - |   |  | FED. ROAD DIST. NO. ILLINOIS FED. AID PROJECT |                                  |                |                       |                   |
|   |                       |            |           |   |  | SCALE:  | SHEET NO. OF SHEETS STA. TO STA. |                |                       |                   |



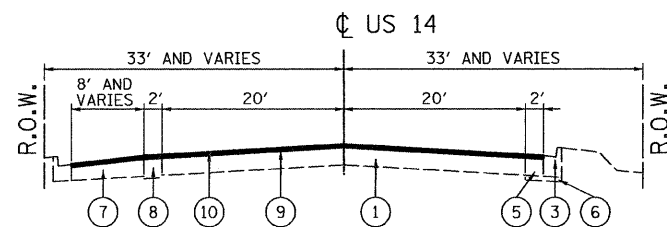
**US 14  
EXIST. TYPICAL SECTION**  
APPROX. STA. 468+00 TO STA. 494+05



**US 14  
EXIST. TYPICAL SECTION**  
APPROX. STA. 347+90 TO STA. 448+00  
APPROX. STA. 460+90 TO STA. 468+00  
APPROX. STA. 494+05 TO STA. 499+00



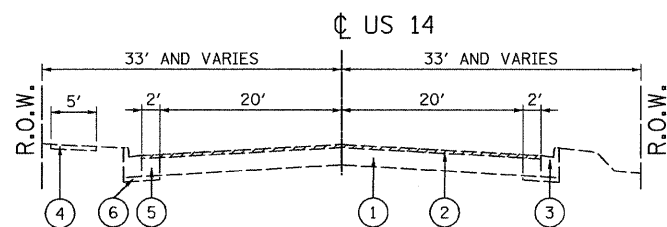
**US 14  
PROP. TYPICAL SECTION**  
APPROX. STA. 468+00 TO STA. 494+05



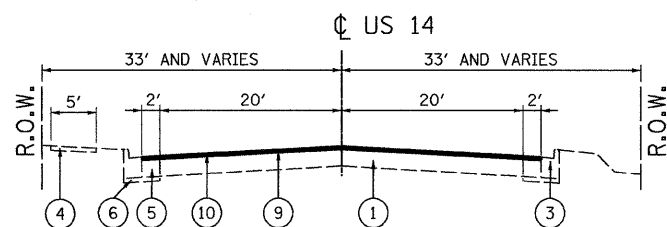
**US 14  
PROP. TYPICAL SECTION**  
APPROX. STA. 347+90 TO STA. 448+00  
APPROX. STA. 460+90 TO STA. 468+00  
APPROX. STA. 494+05 TO STA. 499+00

**LEGEND**

- ① EXISTING P.C.C. PAVEMENT & BITUMINOUS SURFACE (MIN. 3")
- ② PROPOSED HOT-MIX ASPHALT SURFACE REMOVAL, 2-1/2"
- ③ EXISTING COMB. CONC. CURB & GUTTER (VARIOUS TYPES)
- ④ EXISTING P.C.C. SIDEWALK
- ⑤ EXISTING P.C.C. WIDENING
- ⑥ EXISTING SUB-BASE GRANULAR MATERIAL
- ⑦ EXISTING ASPHALT OR CONCRETE PAVEMENT
- ⑧ EXISTING BITUMINOUS CONCRETE BASE COURSE WIDENING
- ⑨ PROPOSED POLYMERIZED LEVELING BINDER (MACHINE METHOD), IL-4.75, N50, 3/4" - 1"
- ⑩ PROPOSED HOT-MIX ASPHALT SURFACE COURSE, MIX "D", N70, 1 1/2"



**US 14  
EXIST. TYPICAL SECTION**  
APPROX. STA. 448+00 TO STA. 460+90



**US 14  
PROP. TYPICAL SECTION**  
APPROX. STA. 448+00 TO STA. 460+90

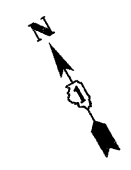
**NOTES:**

1. THE CONTRACTOR SHALL MILL FIRST BEFORE PATCHING.
2. THE UNIT WEIGHT USED TO CALCULATE ALL HOT MIX ASPHALT SURFACE MIXTURES IS 112 LBS/SQ YD/IN.
3. WHEN RAP EXCEEDS 20%, THE NEW ASPHALT BINDER IN THE MIX SHALL BE PG 58-22
4. CROSS-SECTION SLOPE SHOULD BE PAVED TO 2.00% OR TO MATCH EXISTING AS DIRECTED BY THE ENGINEER
5. CONCRETE CURB & GUTTER TO BE REMOVED AND REPLACED AS DIRECTED BY THE ENGINEER

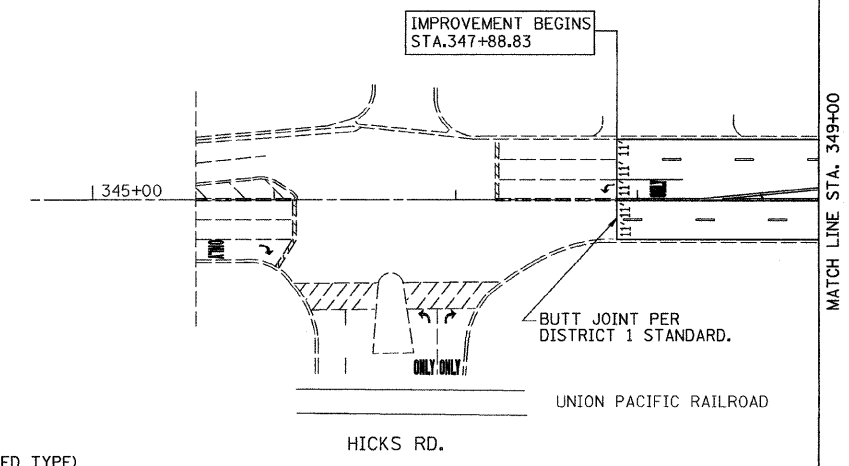
**HOT-MIX ASPHALT MIXTURE REQUIREMENTS**

| MIXTURE TYPE   | AC TYPE              | AIR VOIDS   |
|--|----------------------|-------------|
| HOT-MIX ASPHALT SURFACE COURSE, MIX "D", N70 (IL 9.5 mm)   | PG 64-22             | 4% @ 70 GYP |
| POLYMERIZED LEVELING BINDER (MACHINE METHOD), IL-4.75, N50 | SBS/SBR PG 76-28/-22 | 4% @ 50 GYP |

|                                   |                       |               |           |   |   |           |    |                      |                               |                |                       |                   |
|-----------------------------------|-----------------------|---------------|-----------|---|---|-----------|----|----------------------|-------------------------------|----------------|-----------------------|-------------------|
| FILE NAME =<br>...xsec517@9ts.dgn | USER NAME = gthesse   | DESIGNED - EA | REVISED - | <b>STATE OF ILLINOIS<br/>DEPARTMENT OF TRANSPORTATION</b> | <b>TYPICAL SECTIONS<br/>US 14 - HICKS ROAD TO VAIL AVENUE</b> |           |    | F.A.<br>RTE.<br>3512 | SECTION<br>188 Y & 88-1Y/RS-4 | COUNTY<br>COOK | TOTAL<br>SHEETS<br>22 | SHEET<br>NO.<br>4 |
|                                   | PLOT SCALE = N.T.S.   | CHECKED - JAS | REVISED - |   | SCALE:  | SHEET NO. | OF | SHEETS               | STA.                          | TO STA.        | CONTRACT NO. 60661    |                   |
|                                   | PLOT DATE = 4/17/2009 | DATE -4/16/09 | REVISED - |   | FED. ROAD DIST. NO. ILLINOIS FED. AID PROJECT                 |           |    |                      |                               |                |                       |                   |
|                                   |                       |               |           |   |   |           |    |                      |                               |                |                       |                   |

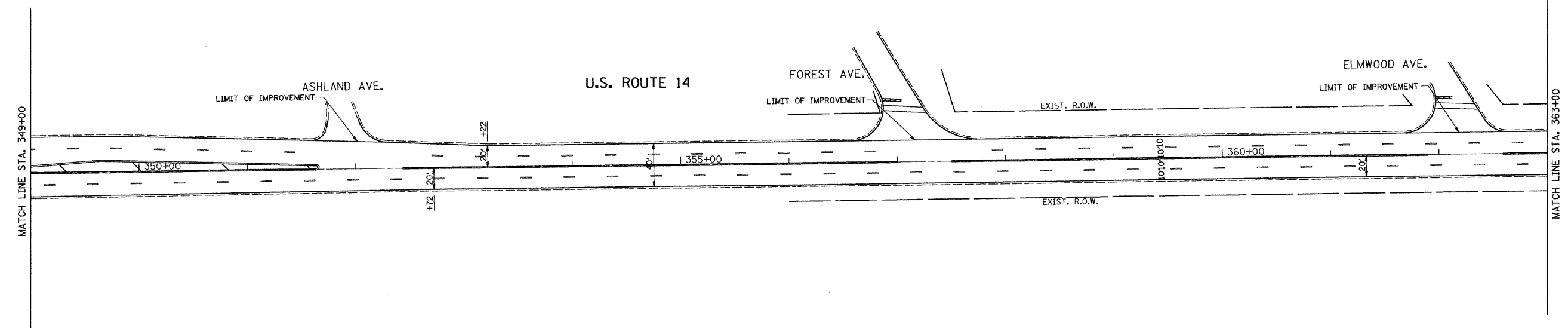
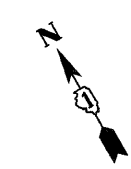


U.S. ROUTE 14

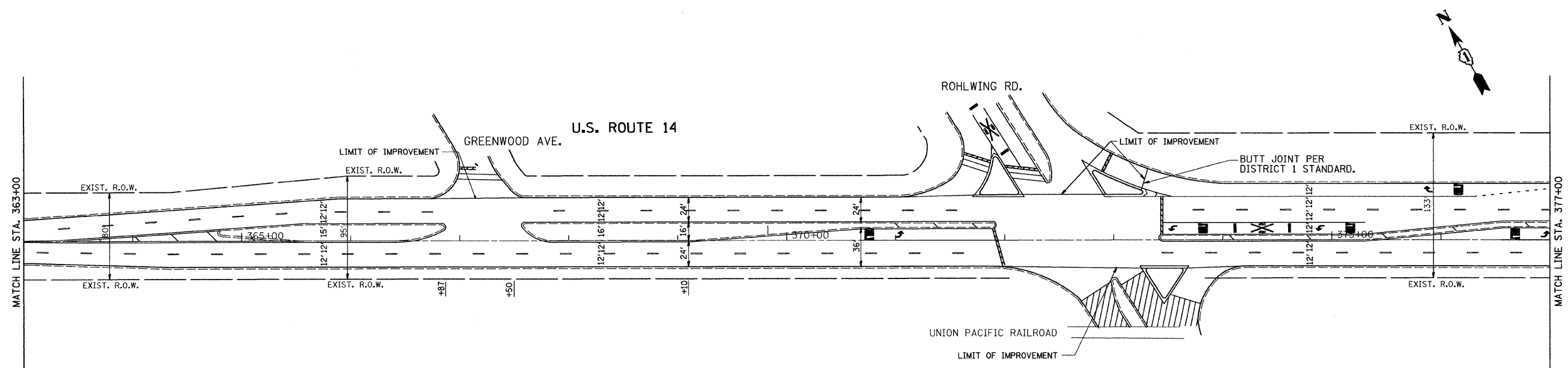


PAVEMENT IMPROVEMENTS:  
 HOT-MIX ASPHALT SURFACE REMOVAL, 2 1/2"  
 POLYMERIZED LEVELING BINDER (MACHINE METHOD), IL-4.75, N50, 3/4" - 1"  
 HOT-MIX ASPHALT SURFACE COURSE, MIX "D", N70, 1 1/2"

NOTES:  
 PERMANENT PAVEMENT MARKING SHALL BE THERMOPLASTIC (OF THE EXTRUDED TYPE) AND SHOULD BE PLACED IN ACCORDANCE WITH "DISTRICT ONE TYPICAL PAVEMENT MARKING DETAILS"  
 RAISED REFLECTIVE PAVEMENT MARKERS SHALL BE IN ACCORDANCE WITH THE DISTRICT ON "TYPICAL APPLICATION RAISED REFLECTIVE PAVEMENT MARKERS DETAILS"

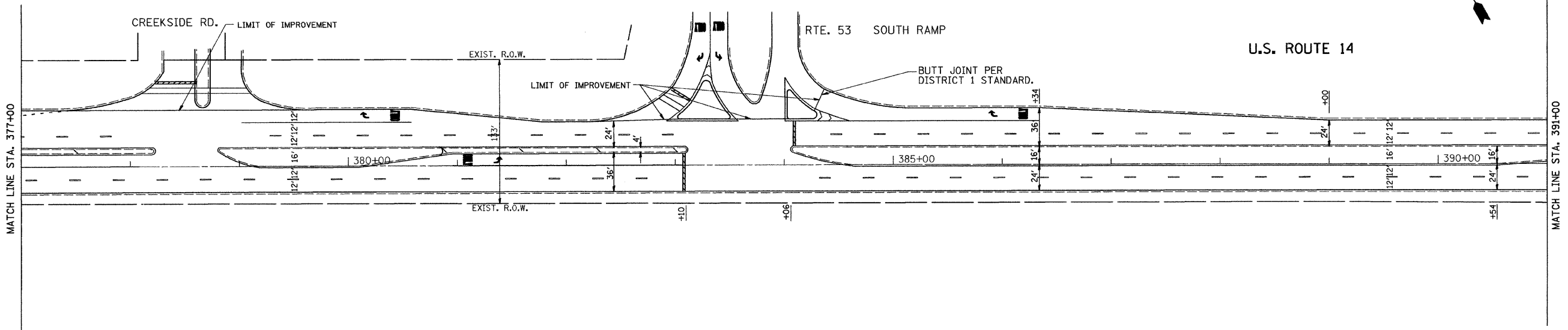


|   |                       |                |           |   |   |                     |                            |   |                   |        |              |           |
|---|-----------------------|----------------|-----------|---|---|---------------------|----------------------------|---|-------------------|--------|--------------|-----------|
| FILE NAME =<br>... \P1ans\p1n51709pp&mr-k01.dgn | USER NAME = gthesse   | DESIGNED - TJR | REVISED - | <b>STATE OF ILLINOIS<br/>DEPARTMENT OF TRANSPORTATION</b> | <b>ROADWAY AND PAVEMENT MARKING<br/>US 14 - HICKS ROAD TO VAIL AVENUE</b> |                     |                            | F.A. RTE.                                     | SECTION           | COUNTY | TOTAL SHEETS | SHEET NO. |
|   | PLOT SCALE = 1" = 50' | CHECKED - JAS  | REVISED - |   |   |                     |                            | 3512  | (88 Y & 88-1YRS-4 | COOK   | 22           | 5         |
|   | PLOT DATE = 4/17/2009 | DATE - 4/16/09 | REVISED - |   |   |                     |                            | CONTRACT NO. 60661                            |                   |        |              |           |
|   |                       |                |           |   | SCALE: 1"=50'   | SHEET NO. OF SHEETS | STA. 339+81 TO STA. 363+00 | FED. ROAD DIST. NO. ILLINOIS FED. AID PROJECT |                   |        |              |           |

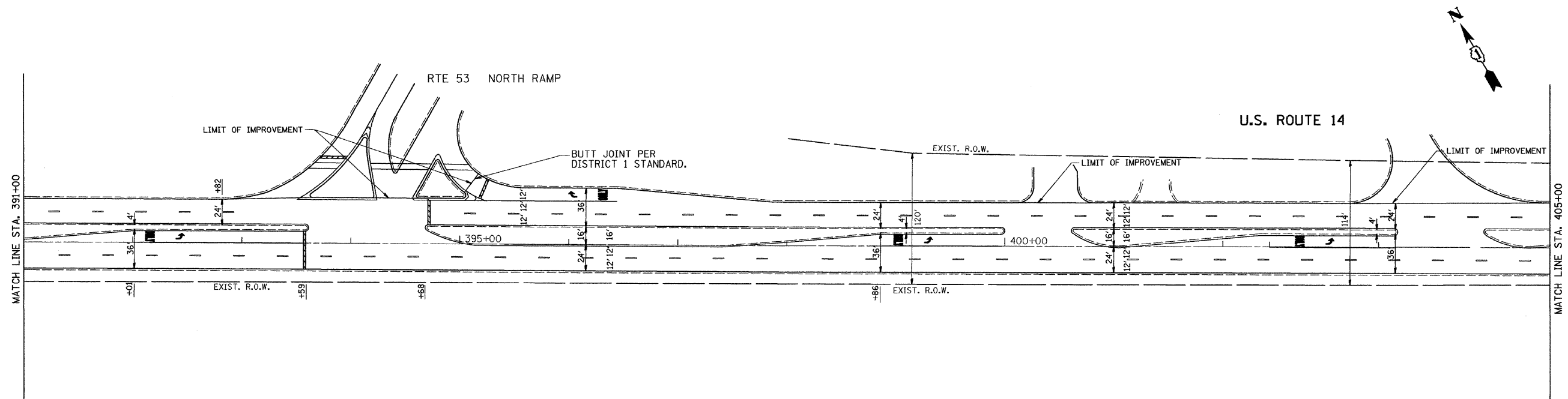


**PAVEMENT IMPROVEMENTS:**  
 HOT-MIX ASPHALT SURFACE REMOVAL, 2 1/2"  
 POLYMERIZED LEVELING BINDER (MACHINE METHOD), IL-4.75, N50, 3/4" - 1"  
 HOT-MIX ASPHALT SURFACE COURSE, MIX "D", N70, 1 1/2"

**NOTES:**  
 PERMANENT PAVEMENT MARKING SHALL BE THERMOPLASTIC (OF THE EXTRUDED TYPE) AND SHOULD BE PLACED IN ACCORDANCE WITH "DISTRICT ONE TYPICAL PAVEMENT MARKING DETAILS"  
 RAISED REFLECTIVE PAVEMENT MARKERS SHALL BE IN ACCORDANCE WITH THE DISTRICT ON "TYPICAL APPLICATION RAISED REFLECTIVE PAVEMENT MARKERS DETAILS"



|   |                       |                |           |   |   |   |           |                   |                               |                    |                    |                |  |
|---|-----------------------|----------------|-----------|---|---|---|-----------|-------------------|-------------------------------|--------------------|--------------------|----------------|--|
| FILE NAME =<br>...P1ana\p1n51709pp&mr-k02.dgn | USER NAME = gthiesse  | DESIGNED - TJR | REVISED - | <b>STATE OF ILLINOIS<br/>DEPARTMENT OF TRANSPORTATION</b> | <b>ROADWAY AND PAVEMENT MARKING<br/>US 14 - HICKS ROAD TO VAIL AVENUE</b> |   |           | F.A. RTE.<br>3512 | SECTION<br>(88 Y & 88-1Y)RS-4 | COUNTY<br>COOK     | TOTAL SHEETS<br>22 | SHEET NO.<br>6 |  |
|   | PLOT SCALE = 1" = 50' | CHECKED - JAS  | REVISED - |   | SCALE: 1"=50'   | SHEET NO.                                     | OF SHEETS | STA. 363+00       | TO STA. 391+00                | CONTRACT NO. 60G61 |                    |                |  |
|   | PLOT DATE = 4/17/2009 | DATE - 4/16/09 | REVISED - |   |   | FED. ROAD DIST. NO. ILLINOIS FED. AID PROJECT |           |                   |                               |                    |                    |                |  |
|   |                       |                |           |   |   |   |           |                   |                               |                    |                    |                |  |

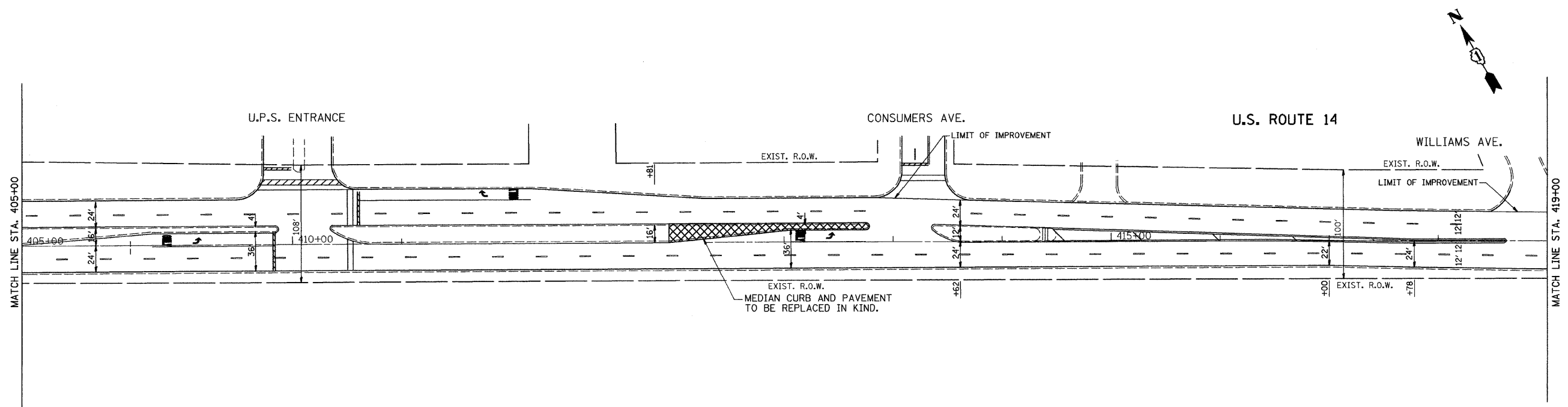


**PAVEMENT IMPROVEMENTS:**

HOT-MIX ASPHALT SURFACE REMOVAL, 2 1/2"  
 POLYMERIZED LEVELING BINDER (MACHINE METHOD), IL-4.75, N50, 3/4" - 1"  
 HOT-MIX ASPHALT SURFACE COURSE, MIX "D", N70, 1 1/2"

**NOTES:**

PERMANENT PAVEMENT MARKING SHALL BE THERMOPLASTIC (OF THE EXTRUDED TYPE) AND SHOULD BE PLACED IN ACCORDANCE WITH "DISTRICT ONE TYPICAL PAVEMENT MARKING DETAILS"  
 RAISED REFLECTIVE PAVEMENT MARKERS SHALL BE IN ACCORDANCE WITH THE DISTRICT ON "TYPICAL APPLICATION RAISED REFLECTIVE PAVEMENT MARKERS DETAILS"



|                                |                     |
|--------------------------------|---------------------|
| FILE NAME =                    | USER NAME = gthesse |
| ...:\Plans\p1n51709pp&mk03.dgn |                     |
| PLOT SCALE = 1" = 50'          |                     |
| PLOT DATE = 4/17/2009          |                     |

|                |           |
|----------------|-----------|
| DESIGNED - TJR | REVISIONS |
| DRAWN - IS     | REVISIONS |
| CHECKED - JAS  | REVISIONS |
| DATE - 4/16/09 | REVISIONS |

|                |           |
|----------------|-----------|
| DESIGNED - TJR | REVISIONS |
| DRAWN - IS     | REVISIONS |
| CHECKED - JAS  | REVISIONS |
| DATE - 4/16/09 | REVISIONS |

|                |           |
|----------------|-----------|
| DESIGNED - TJR | REVISIONS |
| DRAWN - IS     | REVISIONS |
| CHECKED - JAS  | REVISIONS |
| DATE - 4/16/09 | REVISIONS |

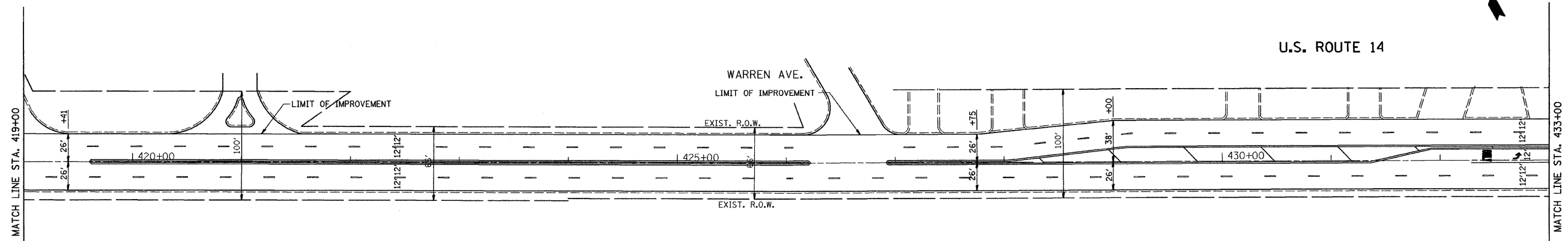
**STATE OF ILLINOIS  
 DEPARTMENT OF TRANSPORTATION**

**ROADWAY AND PAVEMENT MARKING  
 US 14 - HICKS ROAD TO VAIL AVENUE**

SCALE: 1"=50' SHEET NO. OF SHEETS STA. 391+00 TO STA. 419+00

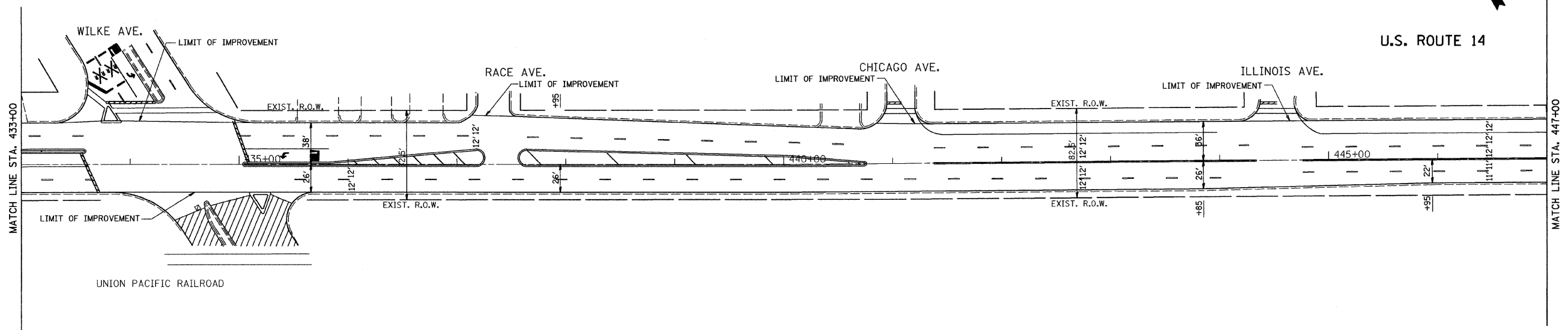
| F.A. RTE.                                       | SECTION            | COUNTY | TOTAL SHEETS       | SHEET NO. |
|---|--------------------|--------|--------------------|-----------|
| 3512  | (88 Y & 88-1Y)RS-4 | COOK   | 22                 | 7         |
| FED. ROAD DIST. NO. [ILLINOIS] FED. AID PROJECT |                    |        | CONTRACT NO. 60G61 |           |





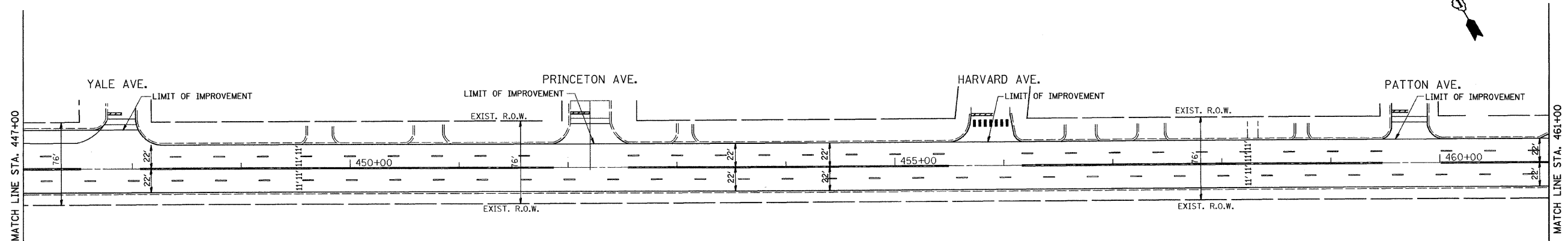
**PAVEMENT IMPROVEMENTS:**  
 HOT-MIX ASPHALT SURFACE REMOVAL, 2 1/2"  
 POLYMERIZED LEVELING BINDER (MACHINE METHOD), IL-4.75, N50, 3/4" - 1"  
 HOT-MIX ASPHALT SURFACE COURSE, MIX "D", N70, 1 1/2"

**NOTES:**  
 PERMANENT PAVEMENT MARKING SHALL BE THERMOPLASTIC (OF THE EXTRUDED TYPE) AND SHOULD BE PLACED IN ACCORDANCE WITH "DISTRICT ONE TYPICAL PAVEMENT MARKING DETAILS"  
 RAISED REFLECTIVE PAVEMENT MARKERS SHALL BE IN ACCORDANCE WITH THE DISTRICT ON "TYPICAL APPLICATION RAISED REFLECTIVE PAVEMENT MARKERS DETAILS"



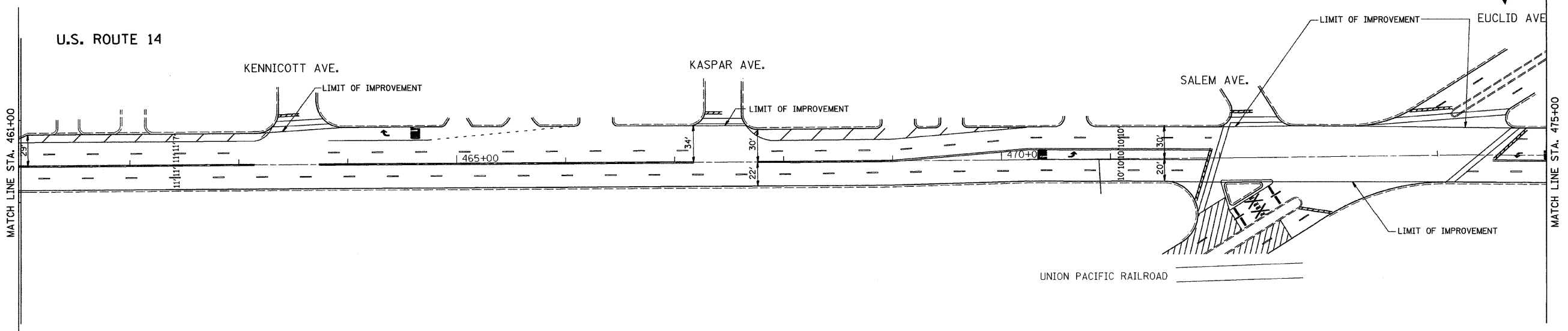
|  |                       |                |           |   |   |                     |                            |   |                               |                |                    |                |
|--|-----------------------|----------------|-----------|---|---|---------------------|----------------------------|---|-------------------------------|----------------|--------------------|----------------|
| FILE NAME =<br>...NPlans\p1n51709pp&mk04.dgn | USER NAME = gthesso   | DESIGNED - TJR | REVISED - | <b>STATE OF ILLINOIS<br/>DEPARTMENT OF TRANSPORTATION</b> | <b>ROADWAY AND PAVEMENT MARKING<br/>US 14 - HICKS ROAD TO VAIL AVENUE</b> |                     |                            | F.A. RTE.<br>3512                             | SECTION<br>(88 Y & 88-1YRS-4) | COUNTY<br>COOK | TOTAL SHEETS<br>22 | SHEET NO.<br>8 |
|  | PLOT SCALE = 1" = 50' | DRAWN - IS     | REVISED - |   | SCALE: 1"=50'   | SHEET NO. OF SHEETS | STA. 419+00 TO STA. 447+00 | CONTRACT NO. 60G61                            |                               |                |                    |                |
|  | PLOT DATE = 4/17/2009 | CHECKED - JAS  | REVISED - |   |   |                     |                            | FED. ROAD DIST. NO. ILLINOIS FED. AID PROJECT |                               |                |                    |                |
|  |                       | DATE - 4/16/09 | REVISED - |   |   |                     |                            |   |                               |                |                    |                |



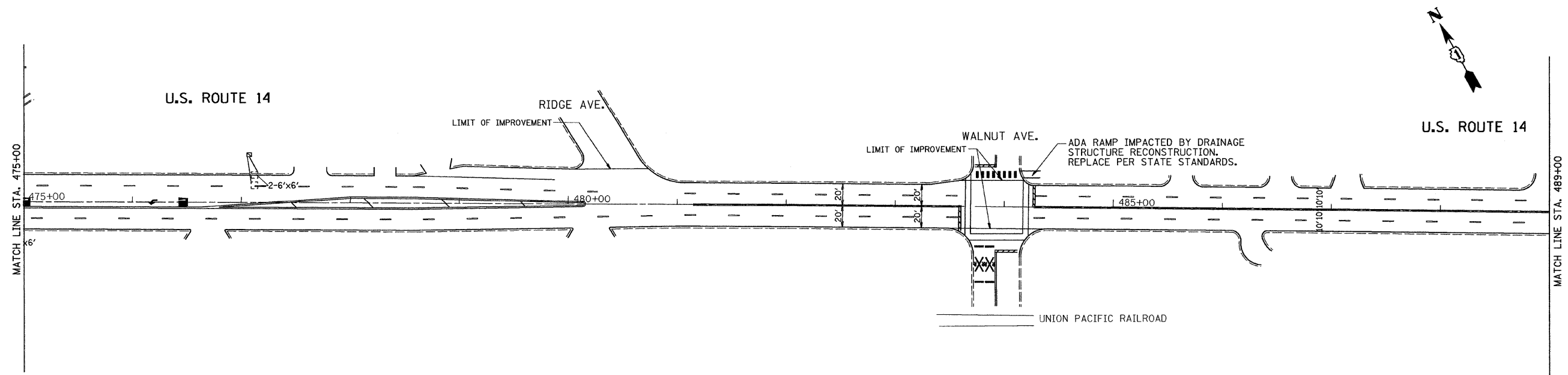


**PAVEMENT IMPROVEMENTS:**  
 HOT-MIX ASPHALT SURFACE REMOVAL, 2 1/2"  
 POLYMERIZED LEVELING BINDER (MACHINE METHOD), IL-4.75, N50, 3/4" - 1"  
 HOT-MIX ASPHALT SURFACE COURSE, MIX "D", N70, 1 1/2"

**NOTES:**  
 PERMANENT PAVEMENT MARKING SHALL BE THERMOPLASTIC (OF THE EXTRUDED TYPE) AND SHOULD BE PLACED IN ACCORDANCE WITH "DISTRICT ONE TYPICAL PAVEMENT MARKING DETAILS"  
 RAISED REFLECTIVE PAVEMENT MARKERS SHALL BE IN ACCORDANCE WITH THE DISTRICT ON "TYPICAL APPLICATION RAISED REFLECTIVE PAVEMENT MARKERS DETAILS"



|  |                       |                |           |   |   |           |           |                   |                              |                    |                    |                |
|--|-----------------------|----------------|-----------|---|---|-----------|-----------|-------------------|------------------------------|--------------------|--------------------|----------------|
| FILE NAME =<br>... \Plans\p1n51709\pp&mk05.dgn | USER NAME = gthesse   | DESIGNED - TJR | REVISED - | <b>STATE OF ILLINOIS<br/>DEPARTMENT OF TRANSPORTATION</b> | <b>ROADWAY AND PAVEMENT MARKING<br/>US 14 - HICKS ROAD TO VAIL AVENUE</b> |           |           | F.A. RTE.<br>3512 | SECTION<br>88 Y & 88-1Y/RS-4 | COUNTY<br>COOK     | TOTAL SHEETS<br>22 | SHEET NO.<br>9 |
|  | PLOT SCALE = 1" = 50' | CHECKED - JAS  | REVISED - |   | SCALE: 1"=50'   | SHEET NO. | OF SHEETS | STA. 447+00       | TO STA. 475+00               | CONTRACT NO. 60G61 |                    |                |
|  | PLOT DATE = 4/17/2009 | DATE - 4/16/09 | REVISED - |   | FED. ROAD DIST. NO. ILLINOIS FED. AID PROJECT                             |           |           |                   |                              |                    |                    |                |

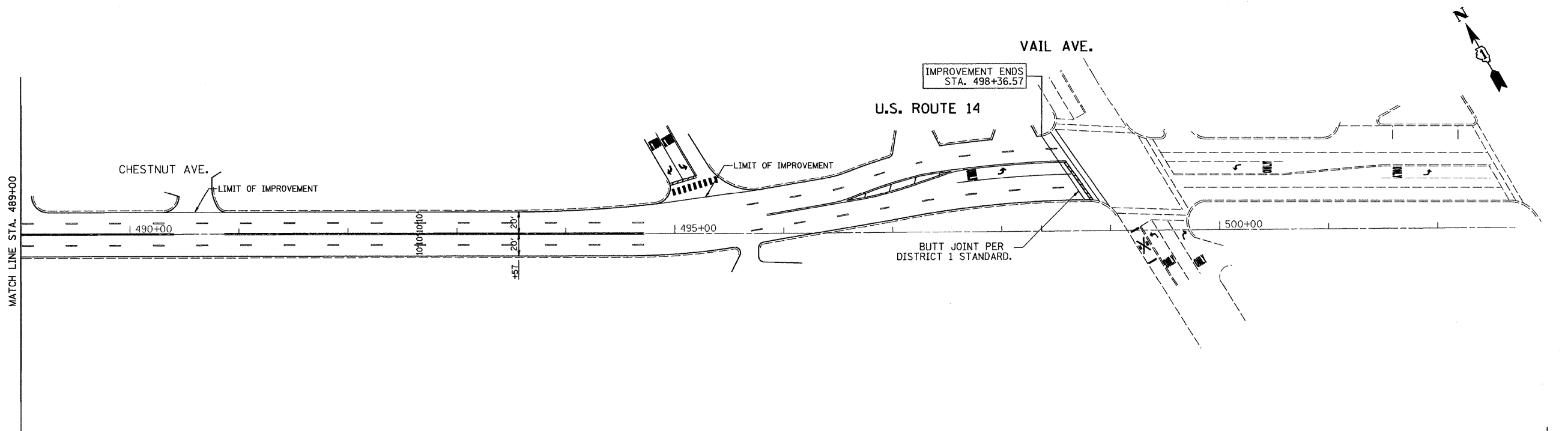


**PAVEMENT IMPROVEMENTS:**

HOT-MIX ASPHALT SURFACE REMOVAL, 2 1/2"  
 POLYMERIZED LEVELING BINDER (MACHINE METHOD), IL-4.75, N50, 3/4" - 1"  
 HOT-MIX ASPHALT SURFACE COURSE, MIX "D", N70, 1 1/2"

**NOTES:**

PERMANENT PAVEMENT MARKING SHALL BE THERMOPLASTIC (OF THE EXTRUDED TYPE) AND SHOULD BE PLACED IN ACCORDANCE WITH "DISTRICT ONE TYPICAL PAVEMENT MARKING DETAILS"  
 RAISED REFLECTIVE PAVEMENT MARKERS SHALL BE IN ACCORDANCE WITH THE DISTRICT ON "TYPICAL APPLICATION RAISED REFLECTIVE PAVEMENT MARKERS DETAILS"



|  |                     |                |           |
|--|---------------------|----------------|-----------|
| FILE NAME =<br>...\\plone\p\In51709pp&mk06.dgn | USER NAME = gthesse | DESIGNED - TJR | REVISED - |
|  |                     | DRAWN - IS     | REVISED - |
|  |                     | CHECKED - JAS  | REVISED - |
|  |                     | DATE - 4/16/09 | REVISED - |

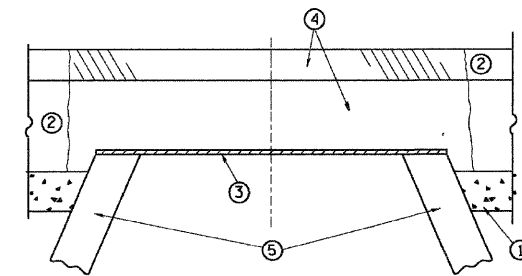
**STATE OF ILLINOIS  
 DEPARTMENT OF TRANSPORTATION**

**ROADWAY AND PAVEMENT MARKING  
 US 14 - HICKS ROAD TO VAIL AVENUE**

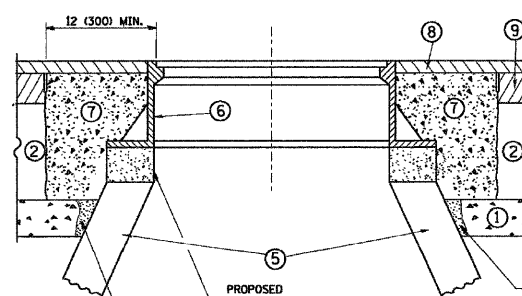
SCALE: 1"=50' SHEET NO. OF SHEETS STA. 475+00 TO STA. 501+65

| F.A. RTE.                                       | SECTION            | COUNTY | TOTAL SHEETS       | SHEET NO. |
|---|--------------------|--------|--------------------|-----------|
| 3512  | (88 Y & 88-1Y)RS-4 | COOK   | 22                 | 10        |
| FED. ROAD DIST. NO. [ILLINOIS] FED. AID PROJECT |                    |        | CONTRACT NO. 60661 |           |

|                       |          |                  |              |           |
|-----------------------|----------|------------------|--------------|-----------|
| CONTRACT NO.          |          |                  |              |           |
| F.A. R.T.E.           | SECTION  | COUNTY           | TOTAL SHEETS | SHEET NO. |
| STA.                  | TO STA.  |                  |              |           |
| FED. ROAD DIST. NO. 1 | ILLINOIS | FED. AID PROJECT |              |           |



- CONSTRUCTION PROCEDURES**
- STAGE 1 (BEFORE PAVEMENT MILLING)**
- A) REMOVE A MINIMUM OF 12 (300) OF THE PAVEMENT FROM AROUND THE STRUCTURE.
  - B) REMOVE THE EXISTING FRAME AND LID FROM THE STRUCTURE.
  - C) COVER THE STRUCTURE OPENING WITH A 36 (900) DIAMETER METAL PLATE.
  - D) BACKFILL WITH CRUSHED STONE AND A MINIMUM 1 1/2 (40) THICK HMA SURFACE MIX APPROVED BY THE ENGINEER.



- STAGE 2 (AFTER PAVEMENT MILLING)**
- A) REMOVE THE HMA SURFACE MIX AND CRUSHED STONE.
  - B) INSTALL THE FRAME AND LID; ADJUST THE FRAME TO ITS FINAL SURFACE ELEVATION.
  - C) THE SURROUNDING SPACE SHALL BE FILLED WITH CLASS SI CONCRETE, OR HMA SURFACE COURSE OR HMA BINDER COURSE TO THE ELEVATION OF THE SURFACE OF THE EXISTING BASE COURSE OR THE BINDER COURSE.

THE PROCEDURE EXPLAINED ABOVE SHALL CONFORM TO THE APPLICABLE PORTIONS OF SECTIONS 353, 406, 602, AND 603 OF THE STANDARD SPECIFICATIONS.

PROPOSED SAND FILL  
 PROPOSED BRICK, MORTAR, OR CONC. ADJUSTING RINGS  
 PROPOSED SAND FILL

- LEGEND**
- ① SUB-BASE GRANULAR MATERIAL
  - ② EXISTING PAVEMENT
  - ③ 36 (900) DIAMETER METAL PLATE
  - ④ PROPOSED CRUSHED STONE AND HMA SURFACE MIX
  - ⑤ EXISTING STRUCTURE
  - ⑥ FRAME AND LID (SEE NOTES)
  - ⑦ CLASS SI CONCRETE, HMA SURFACE COURSE OR HMA BINDER COURSE
  - ⑧ PROPOSED HMA SURFACE COURSE
  - ⑨ PROPOSED HMA BINDER COURSE

**NOTES:**

EXISTING BROKEN FRAMES AND LIDS SHALL BE REMOVED AND DISPOSED OF BY THE CONTRACTOR AND SHALL BE REPLACED AS DIRECTED BY THE ENGINEER. REPLACEMENT FRAMES AND LIDS WILL BE PAID FOR IN ACCORDANCE WITH ARTICLE 109.04 OF THE STANDARD SPECIFICATIONS UNLESS A SEPARATE PAY ITEM HAS BEEN PROVIDED.

IF THE EXISTING LIDS ARE OPEN, THE FRAME WILL BE ADJUSTED TO THE ELEVATION OF THE MILLED PAVEMENT SURFACE PRIOR TO THE MILLING OPERATION. THE FRAME WILL NOT BE REMOVED AND COVERED BY THE METAL PLATE.

CITY OF CHICAGO CASTINGS ARE THE PROPERTY OF THE CITY AND THE CONTRACTOR SHALL NOTIFY THE CITY FOR REMOVAL AND DISPOSITION OF THE CASTINGS.

THE METAL PLATE USED TO COVER THE STRUCTURE SHALL REMAIN THE PROPERTY OF THE CONTRACTOR.

WHEN STRUCTURES ARE TO BE ADJUSTED OR RECONSTRUCTED, THE LOWERING AND RAISING OF THE FRAMES AND LIDS WILL NOT BE PAID FOR SEPARATELY BUT WILL BE INCLUDED IN THE COST OF THE CORRESPONDING PAY ITEM.

**LOCATION OF STRUCTURES:**

THE CONTRACTOR WILL BE REQUIRED TO KEEP A RECORD OF THE LOCATIONS OF THE BURIED STRUCTURES ACCORDING TO THE STATION AND DISTANCE LEFT OR RIGHT OF THE CENTERLINE OF PAVEMENT. UPON COMPLETION OF THE WORK, THE CONTRACTOR WILL DELIVER THE RECORD TO THE ENGINEER.

**BASIS OF PAYMENT:** THIS WORK WILL BE PAID FOR AT THE CONTRACT UNIT PRICE PER EACH FOR "FRAMES AND LIDS TO BE ADJUSTED, SPECIAL".

NEW FRAMES AND LIDS, WHEN SPECIFIED, WILL BE PAID FOR SEPARATELY.

**DETAILS FOR FRAMES AND LIDS ADJUSTMENT WITH MILLING**

ALL DIMENSIONS ARE IN INCHES (MILLIMETERS) UNLESS OTHERWISE SHOWN

| REVISIONS    |          |
|--------------|----------|
| NAME         | DATE     |
| R. SHAH      | 10/26/94 |
| R. SHAH      | 01/30/95 |
| R. SHAH      | 03/10/95 |
| A. ABBAS     | 03/21/97 |
| R. WIEDEMANN | 05/14/04 |
| R. BORO      | 01/01/07 |

ILLINOIS DEPARTMENT OF TRANSPORTATION

**DETAILS FOR FRAMES AND LIDS ADJUSTMENT WITH MILLING**

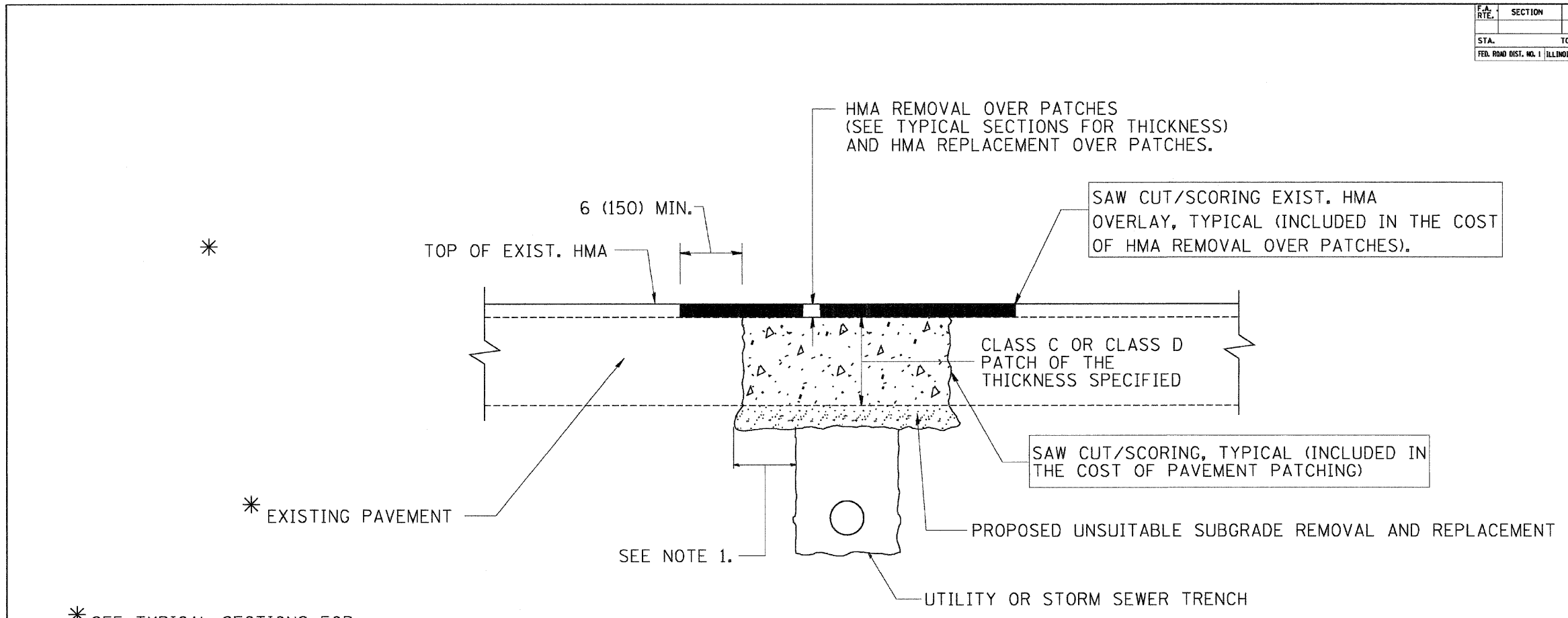
SCALE: VERT. NONE  
 HORIZ. NONE

DRAWN BY  
 CHECKED BY  
 B0600-03 (8D-8)

PLOT DATE = 3/10/2007  
 FILE NAME = .../In51709\_Dist1\_Det01.dgn  
 USER NAME = gthesse

|  |                     |                       |                        |   |  |                     |                              |                    |                    |                 |  |  |
|--|---------------------|-----------------------|------------------------|---|--|---------------------|------------------------------|--------------------|--------------------|-----------------|--|--|
| FILE NAME =<br>.../In51709_Dist1_Det01.dgn | USER NAME = gthesse | DESIGNED -<br>DRAWN - | REVISED -<br>REVISED - | <b>STATE OF ILLINOIS<br/>DEPARTMENT OF TRANSPORTATION</b> | <b>DETAILS FOR FRAMES AND LIDS ADJUSTMENT WITH MILLING</b> | F.A. R.T.E.<br>3512 | SECTION<br>(88 Y & 88-1)RS-4 | COUNTY<br>COOK     | TOTAL SHEETS<br>22 | SHEET NO.<br>11 |  |  |
| PLOT SCALE = N.T.S.                        | CHECKED -           | REVISED -             | SCALE:                 |   |  | SHEET NO. OF SHEETS | STA. TO STA.                 | CONTRACT NO. 60661 |                    |                 |  |  |
| PLOT DATE = 4/17/2009                      | DATE -              | REVISED -             | FED. ROAD DIST. NO.    |   |  | ILLINOIS            | FED. AID PROJECT             |                    |                    |                 |  |  |

|                       |         |                           |              |           |
|-----------------------|---------|---------------------------|--------------|-----------|
| CONTRACT NO.          |         |                           |              |           |
| F.A. RTE.             | SECTION | COUNTY                    | TOTAL SHEETS | SHEET NO. |
|                       |         |                           |              |           |
| STA.                  |         | TO STA.                   |              |           |
| FED. ROAD DIST. NO. 1 |         | ILLINOIS FED. AID PROJECT |              |           |



\* SEE TYPICAL SECTIONS FOR THICKNESS AND MATERIALS

**NOTES:**

1. THE WIDTH OF THE FULL DEPTH PATCH OVER A TRENCH SHALL BE 12 (300) WIDER ON EACH SIDE OF THE TRENCH.
2. FOR METHOD OF MEASUREMENT AND BASIS OF PAYMENT, SEE RECURRING SPECIAL PROVISION "PATCHING WITH HOT-MIX ASPHALT OVERLAY REMOVAL".

**SEQUENCE OF CONSTRUCTION**

1. REMOVE THE EXISTING HMA MATERIAL OVER THE AREA TO BE PATCHED.
2. REMOVE AND REPLACE FULL DEPTH PATCHES
3. REPLACE HMA MATERIAL OVER THE AREA TO BE PATCHED.

ALL DIMENSIONS ARE IN INCHES (MILLIMETERS) UNLESS OTHERWISE SHOWN.

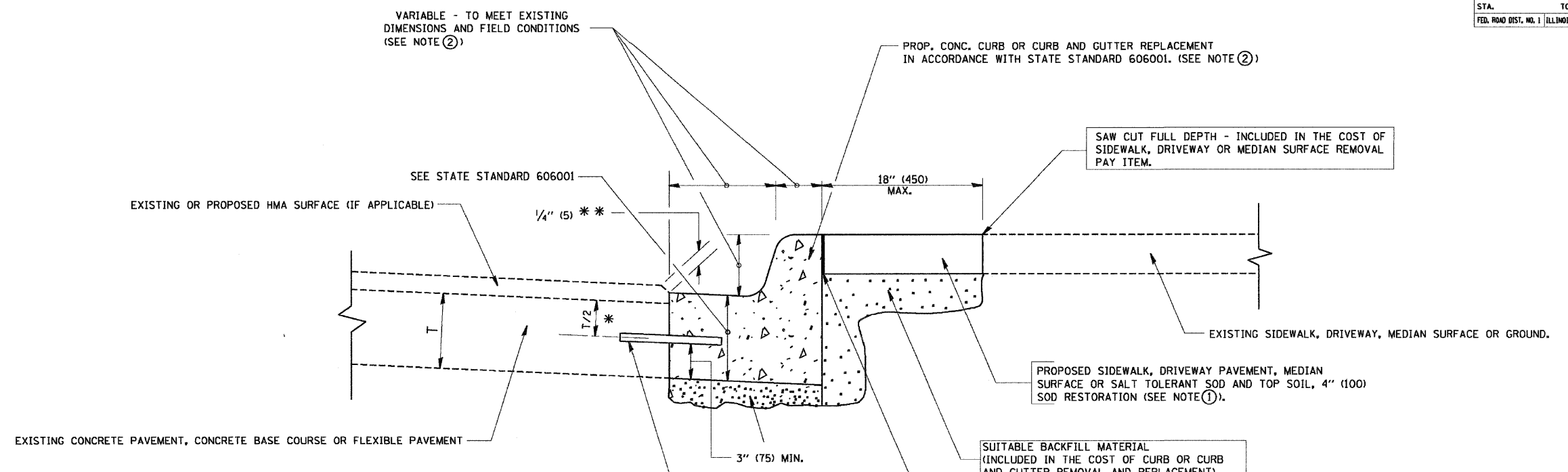
| REVISIONS |          |
|-----------|----------|
| NAME      | DATE     |
| R. SHAH   | 10/25/94 |
| R. SHAH   | 01/14/95 |
| R. SHAH   | 03/23/95 |
| R. SHAH   | 04/24/95 |
| A. HOUSEH | 03/15/96 |
| A. ABBAS  | 03/21/97 |
| A. ABBAS  | 01/20/98 |
| ART ABBAS | 04/27/98 |
| R. BORO   | 01/01/01 |
| R. BORO   | 09/04/01 |

ILLINOIS DEPARTMENT OF TRANSPORTATION  
**PAVEMENT PATCHING FOR HMA SURFACED PAVEMENT**  
 SCALE: VERT. NONE  
 HORIZ. \_\_\_\_\_  
 DRAWN BY \_\_\_\_\_  
 CHECKED BY \_\_\_\_\_  
 BD400-04 (BD-22)

PLOT DATE = 4/17/2009  
 USER NAME = gthiesse  
 PLOT SCALE = N.T.S.  
 PLOT DATE = 4/17/2009

|  |                      |                       |           |   |  |                    |                   |        |              |           |         |                     |                           |
|--|----------------------|-----------------------|-----------|---|--|--------------------|-------------------|--------|--------------|-----------|---------|---------------------|---------------------------|
| FILE NAME =<br>...pIn51709_Dist1_Det02.dgn | USER NAME = gthiesse | DESIGNED -            | REVISED - | <b>STATE OF ILLINOIS<br/>DEPARTMENT OF TRANSPORTATION</b> | <b>PAVEMENT PATCHING FOR HMA SURFACED PAVEMENT</b> | F.A. RTE.          | SECTION           | COUNTY | TOTAL SHEETS | SHEET NO. |         |                     |                           |
|  |                      | DRAWN -               | REVISED - |   |  | 3512               | (88 Y & 88-1YRS-4 | COOK   | 22           | 12        |         |                     |                           |
|  |                      | CHECKED -             | REVISED - |   |  | CONTRACT NO. 60661 |                   |        |              |           |         |                     |                           |
|  |                      | PLOT DATE = 4/17/2009 | REVISED - |   |  | SCALE:             | SHEET NO.         | OF     | SHEETS       | STA.      | TO STA. | FED. ROAD DIST. NO. | ILLINOIS FED. AID PROJECT |
|  |                      |                       |           |   |  |                    |                   |        |              |           |         |                     |                           |

|                                |                  |        |                 |
|--------------------------------|------------------|--------|-----------------|
| CONTRACT NO.                   |                  |        |                 |
| F.A. RTE.                      | SECTION          | COUNTY | TOTAL SHEET NO. |
| STA.                           | TO STA.          |        |                 |
| FED. ROAD DIST. NO.   ILLINOIS | FED. AID PROJECT |        |                 |



- \* 3" (75) MINIMUM FROM TOP AND BOTTOM OF THE CONCRETE PAVEMENT OR BASE COURSE.
  - \*\* IF THE FINAL SURFACE OF THE PAVEMENT IS CONCRETE, THE GUTTER IS TO BE FLUSH WITH THE PAVEMENT.
- NOTE: ① SIDEWALK, DRIVEWAY PAVEMENT OR MEDIAN SURFACE SHALL BE SIMILAR TO THE MATERIAL BEING REMOVED AND WILL BE PAID FOR SEPARATELY.
- SALT TOLERANT SOD AND TOP SOIL, 4" (100) RESTORATION WILL NOT BE PAID FOR SEPARATELY, BUT SHALL BE INCLUDED IN THE COST OF CURB OR CURB AND GUTTER REMOVAL AND REPLACEMENT.
- ② CURB OR CURB AND GUTTER REPLACEMENT SHALL MATCH THE SHAPE OF THE EXISTING CURB OR CURB AND GUTTER UNLESS OTHERWISE SPECIFIED.
  - ③ FOR CURB OR CURB AND GUTTER REMOVAL AND REPLACEMENT ADJACENT TO FLEXIBLE PAVEMENT DELETE EPOXY COATED TIE BARS.
  - ④ LONGITUDINAL BARS, IF ENCOUNTERED IN THE EXISTING CURB OR CURB AND GUTTER, ARE NOT TO BE REPLACED. CUTTING AND REMOVING LONGITUDINAL BARS SHALL BE INCLUDED IN THE COST OF CURB OR CURB AND GUTTER REMOVAL AND REPLACEMENT.
  - ⑤ THE COST OF HMA SURFACE REMOVAL IN THE EXISTING GUTTER FLAG SHALL BE INCLUDED IN THE COST OF THE CURB AND GUTTER REMOVAL AND REPLACEMENT.
  - ⑥ THE REMOVAL AND REPLACEMENT OF THE EXISTING CURB OR CURB AND GUTTER SHALL BE DONE IN ACCORDANCE WITH THE APPLICABLE PORTIONS OF SECTION 440 AND 606 OF THE STANDARD SPECIFICATIONS.
  - ⑦ THE LOCATIONS OF REMOVAL AND REPLACEMENT OF EXISTING CURB OR CURB AND GUTTER SHALL BE DETERMINED BY THE RESIDENT ENGINEER AT THE TIME OF CONSTRUCTION.

- PROF. CONC. CURB OR CURB AND GUTTER REPLACEMENT IN ACCORDANCE WITH STATE STANDARD 606001. (SEE NOTE ②)
- SAW CUT FULL DEPTH - INCLUDED IN THE COST OF SIDEWALK, DRIVEWAY OR MEDIAN SURFACE REMOVAL PAY ITEM.
- EXISTING SIDEWALK, DRIVEWAY, MEDIAN SURFACE OR GROUND.
- PROPOSED SIDEWALK, DRIVEWAY PAVEMENT, MEDIAN SURFACE OR SALT TOLERANT SOD AND TOP SOIL, 4" (100) SOD RESTORATION (SEE NOTE ①).
- SUITABLE BACKFILL MATERIAL (INCLUDED IN THE COST OF CURB OR CURB AND GUTTER REMOVAL AND REPLACEMENT)
- PROPOSED 3/4" (20) PREFORMED EXPANSION JOINT AT CONCRETE SIDEWALKS, DRIVEWAYS, AND MEDIANS. (INCLUDED IN THE COST OF CURB OR CURB AND GUTTER REMOVAL AND REPLACEMENT.)
- UNSUITABLE SUB-BASE MATERIAL TO BE REMOVED, IF DIRECTED BY THE ENGINEER, SHALL BE REPLACED WITH EITHER SUB-BASE GRANULAR MATERIAL, TYPE B OR ADDITIONAL THICKNESS OF CONCRETE.
- REMOVAL AND REPLACEMENT 4" (100) OR LESS IS INCLUDED IN THE COST OF CURB OR CURB AND GUTTER REMOVAL AND REPLACEMENT.
- REMOVAL AND REPLACEMENT IN EXCESS OF 4" (100) WILL BE PAID FOR IN ACCORDANCE WITH ARTICLE 109.04 OF THE STANDARD SPECIFICATIONS.
- PROPOSED #6 (20) EPOXY COATED TIE BARS 24" (600) LONG AT 24" (600) CENTERS WILL NOT BE PAID FOR SEPARATELY. DELETE EPOXY COATED TIE BARS IF EXISTING TIE BARS ARE USUABLE AS DETERMINED BY THE ENGINEER. (SEE NOTE ③).

**BASIS OF PAYMENT:**  
 THIS WORK WILL BE PAID FOR AT THE CONTRACT UNIT PRICE PER FOOT (METER) FOR "CURB REMOVAL AND REPLACEMENT" OR "COMBINATION CONCRETE CURB AND GUTTER REMOVAL AND REPLACEMENT".

ALL DIMENSIONS ARE IN INCHES (MILLIMETERS) UNLESS OTHERWISE SHOWN.

| REVISIONS |          |
|-----------|----------|
| NAME      | DATE     |
| A. HOUSEH | 03/11/94 |
| R. SHAH   | 02/24/95 |
| R. SHAH   | 03/02/95 |
| R. SHAH   | 08/19/95 |
| R. SHAH   | 09/12/95 |
| R. SHAH   | 09/19/95 |
| R. SHAH   | 10/03/95 |
| A. ABBAS  | 03/21/97 |
| M. GOMEZ  | 01/22/01 |
| R. BORO   | 01/01/07 |

ILLINOIS DEPARTMENT OF TRANSPORTATION  
**CURB OR CURB AND GUTTER REMOVAL AND REPLACEMENT**  
 SCALE: VERT. NONE  
 HORIZ. \_\_\_\_\_  
 DRAWN BY \_\_\_\_\_  
 CHECKED BY \_\_\_\_\_  
 B0600-06 (B0-24)

## CURB OR CURB AND GUTTER REMOVAL AND REPLACEMENT

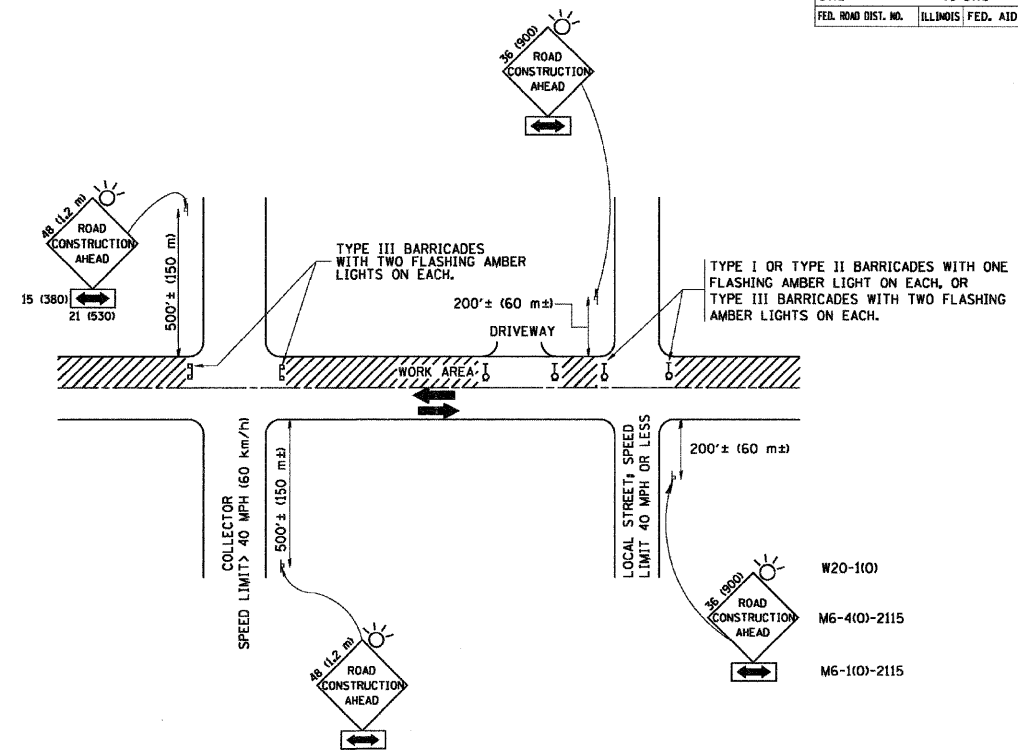
PLOT DATE = 3/10/2007  
 PLOT SCALE = N.T.S.  
 USER NAME = gthesse

|   |                     |            |                    |   |  |                     |          |                  |              |           |
|---|---------------------|------------|--------------------|---|--|---------------------|----------|------------------|--------------|-----------|
| FILE NAME =<br>...p\In51709_Dist1_Det03.dgn | USER NAME = gthesse | DESIGNED - | REVISED -          | <b>STATE OF ILLINOIS<br/>DEPARTMENT OF TRANSPORTATION</b> | <b>CURB OR CURB AND GUTTER REMOVAL AND REPLACEMENT</b> | F.A. RTE.           | SECTION  | COUNTY           | TOTAL SHEETS | SHEET NO. |
| PLOT SCALE = N.T.S.                         | CHECKED -           | REVISED -  | 3512               |   |  | (88 Y & 88-1Y)RS-4  | COOK     | 22               | 13           |           |
| PLOT DATE = 4/17/2009                       | DATE -              | REVISED -  | CONTRACT NO. 60661 |   |  |                     |          |                  |              |           |
|   |                     |            |                    |   |  | FED. ROAD DIST. NO. | ILLINOIS | FED. AID PROJECT |              |           |

SCALE: SHEET NO. OF SHEETS STA. TO STA.



|                     |                           |        |              |           |
|---------------------|---------------------------|--------|--------------|-----------|
| CONTRACT NO.        |                           |        |              |           |
| F.A. RTE.           | SECTION                   | COUNTY | TOTAL SHEETS | SHEET NO. |
| STA.                | TO STA.                   |        |              |           |
| FED. ROAD DIST. NO. | ILLINOIS FED. AID PROJECT |        |              |           |



TRAFFIC CONTROL AND PROTECTION FOR SIDE ROADS, INTERSECTIONS, AND DRIVEWAYS

NOTES:

A. FOR NO LANE RESTRICTION ON THE SIDE ROAD OR DRIVEWAYS:

1. SIDE ROAD WITH A SPEED LIMIT OF 40 MPH (60 km/h) OR LESS AS SHOWN ON THE DRAWING AND AS DIRECTED BY THE ENGINEER:

a) ONE ROAD CONSTRUCTION AHEAD SIGN 36 x 36 (900x900) WITH A FLASHER AND FLAG MOUNTED ON IT APPROXIMATELY 200' (60 m) IN ADVANCE OF THE MAIN ROUTE.

b) THE CLOSED PORTION OF THE MAIN ROUTE SHALL BE PROTECTED BY BLOCKING WITH TYPE I, TYPE II OR TYPE III BARRICADES, 1/3 OF THE CROSS SECTION OF THE CLOSED PORTION.

2. SIDE ROAD WITH A SPEED LIMIT GREATER THAN 40 MPH (60 km/h) AS SHOWN ON THE DRAWING AND AS DIRECTED BY THE ENGINEER:

a) ONE ROAD CONSTRUCTION AHEAD SIGN 48 x 48 (1.2 m x 1.2 m) WITH A FLASHER MOUNTED ON IT APPROXIMATELY 500' (150 m) IN ADVANCE OF THE MAIN ROUTE.

b) THE CLOSED PORTION OF THE MAIN ROUTE SHALL BE PROTECTED BY BLOCKING WITH TYPE III BARRICADES, 1/2 OF THE CROSS SECTION OF THE CLOSED PORTION.

3. WHEN THE SIDE ROAD LIES BETWEEN THE BEGINNING OF THE MAINLINE SIGNING AND THE WORK ZONE, A SINGLE HEADED ARROW (M6-1) SHALL BE USED IN LIEU OF THE DOUBLE HEADED ARROW (M6-4).

B. FOR A LANE CLOSURE ON A SIDE ROAD OR DRIVEWAY:

USE APPLICABLE PORTIONS OF THE TYPICAL APPLICATION OF TRAFFIC CONTROL DEVICES (STD. 701501, STD. 701606 OR THE APPROPRIATE STANDARD). THE SPACING OF SIGNS AND BARRICADES SHALL BE ADJUSTED FOR FIELD CONDITIONS AS DIRECTED BY THE ENGINEER. THE DIRECTIONAL ARROW SHALL BE COVERED OR REMOVED WHEN NO LONGER CONSISTENT WITH THE SIDE ROAD LANE CLOSURE.

C. ADVANCE WARNING SIGNS ARE TO BE OMITTED ON DRIVEWAY UNLESS OTHERWISE NOTED.

D. THE TRAFFIC CONTROL AND PROTECTION FOR SIDE ROADS, INTERSECTIONS, AND DRIVEWAYS SHALL BE INCIDENTAL TO THE COST OF SPECIFIED TRAFFIC CONTROL STANDARDS OR ITEMS.

All dimensions are in millimeters (inches) unless otherwise shown.

| REVISIONS    |          |
|--------------|----------|
| NAME         | DATE     |
| LHA          | 6/89     |
| T. RAMMACHER | 09/08/94 |
| J. OBERLE    | 03/19/95 |
| A. HOUSEH    | 03/05/96 |
| A. HOUSEH    | 10/15/96 |
| T. RAMMACHER | 01/06/00 |
|              |          |
|              |          |

ILLINOIS DEPARTMENT OF TRANSPORTATION  
TRAFFIC CONTROL AND PROTECTION  
FOR  
SIDE ROADS, INTERSECTIONS, AND  
DRIVEWAYS

SCALE: NONE

DRAWN BY  
CHECKED BY  
TC-10

PLOT DATE = 3/6/2007  
PLOT SCALE = 1/8" = 1'-0"  
PLOT USER = gthesse

FILE NAME =  
...p\In51709\_Dist1\_Det05.dgn

|                       |            |           |
|-----------------------|------------|-----------|
| USER NAME = gthesse   | DESIGNED - | REVISED - |
| PLOT SCALE = N.T.S.   | DRAWN -    | REVISED - |
| PLOT DATE = 4/17/2009 | CHECKED -  | REVISED - |
|                       | DATE -     | REVISED - |

STATE OF ILLINOIS  
DEPARTMENT OF TRANSPORTATION

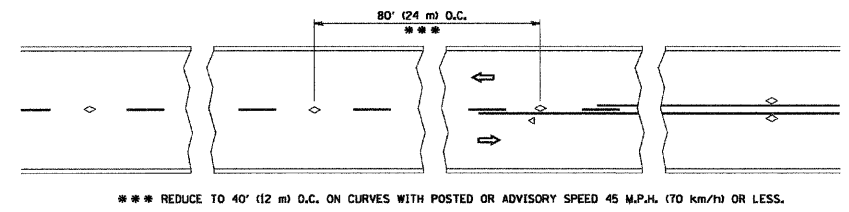
TRAFFIC CONTROL AND PROTECTION FOR  
SIDE ROADS, INTERSECTIONS, AND DRIVEWAYS

SCALE: SHEET NO. OF SHEETS STA. TO STA.

|   |                    |        |              |           |
|---|--------------------|--------|--------------|-----------|
| F.A. RTE.                                     | SECTION            | COUNTY | TOTAL SHEETS | SHEET NO. |
| 3512  | (88 Y & 88-1Y)RS-4 | COOK   | 22           | 15        |
| CONTRACT NO. 60G61                            |                    |        |              |           |
| FED. ROAD DIST. NO. ILLINOIS FED. AID PROJECT |                    |        |              |           |

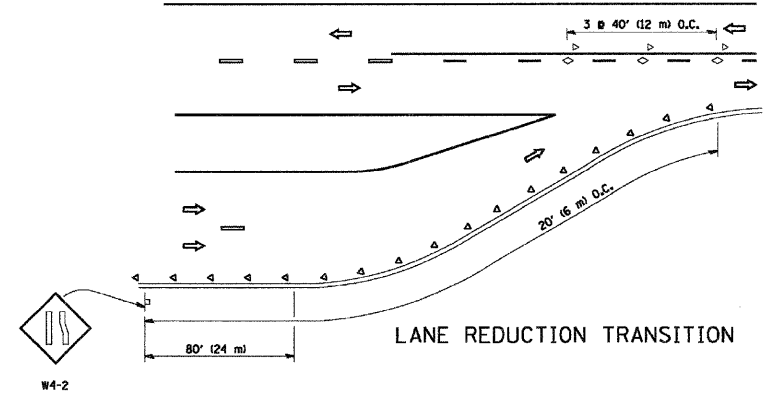


|                     |                           |        |              |           |
|---------------------|---------------------------|--------|--------------|-----------|
| CONTRACT NO.        |                           |        |              |           |
| F.A. RTE.           | SECTION                   | COUNTY | TOTAL SHEETS | SHEET NO. |
| STA.                | TO STA.                   |        |              |           |
| FED. ROAD DIST. NO. | ILLINOIS FED. AID PROJECT |        |              |           |

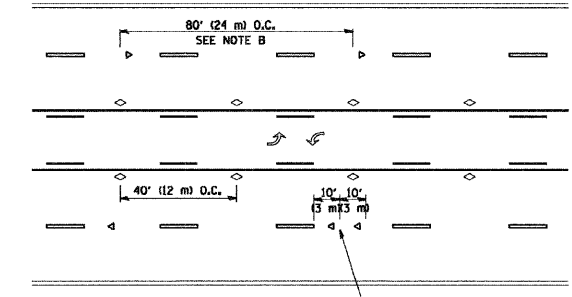


\*\*\* REDUCE TO 40' (12 m) O.C. ON CURVES WITH POSTED OR ADVISORY SPEED 45 M.P.H. (70 km/h) OR LESS.

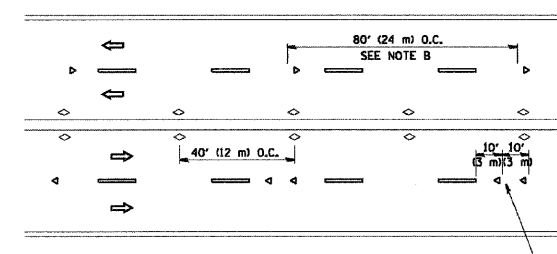
TWO-LANE/TWO-WAY



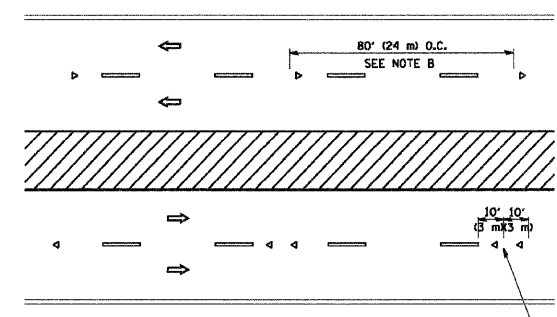
LANE REDUCTION TRANSITION



TWO-WAY LEFT TURN



MULTI-LANE/UNDIVIDED



MULTI-LANE/DIVIDED

GENERAL NOTES

1. MARKERS USED WITH DASHED LINES SHALL BE CENTERED IN THE GAP BETWEEN SEGMENTS.
2. MARKERS USED ADJACENT TO SOLID LINES SHALL BE OFFSET 2 TO 3 (50 TO 75) TOWARD TRAFFIC AS SHOWN.
3. MARKERS THROUGH TANGENTS LESS THAN 500' (150 m) IN LENGTH BETWEEN CURVES SHALL BE INSTALLED AT THE LESSER OF THE TWO CURVE SPACINGS.

SYMBOLS

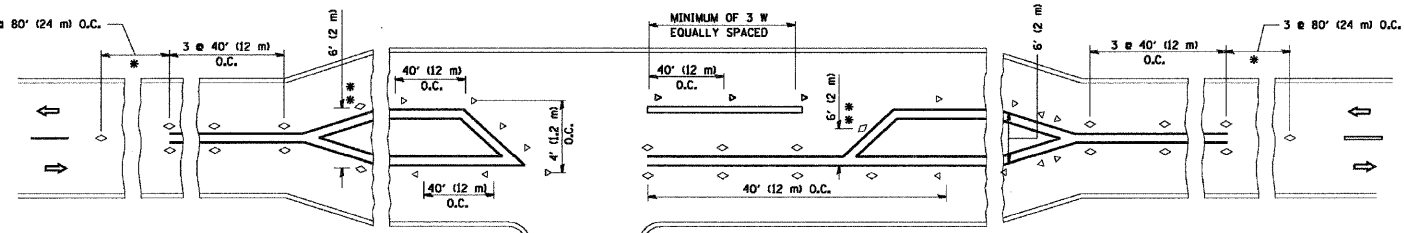
- YELLOW STRIPE
- WHITE STRIPE
- ◁ ONE-WAY AMBER MARKER
- ◁ ONE-WAY CRYSTAL MARKER (W/O)
- ◊ TWO-WAY AMBER MARKER

LANE MARKER NOTES

- B. REDUCE TO 40' (12 m) O.C. ON CURVES WHERE ADVISORY SPEEDS ARE 10 M.P.H. (20 km/h) LOWER THAN POSTED SPEEDS.
- A. USE DOUBLE LANE LINE MARKERS SPACED AS SHOWN.

DESIGN NOTES

1. DOUBLE LANE LINE MARKERS SHALL BE USED UNLESS SPECIFIED OTHERWISE.
2. EXCEPT AS SHOWN ON THE LANE REDUCTION TRANSITION AND FREEWAY EXIT RAMP DETAIL, MARKERS ARE NOT TO BE SPECIFIED ON RIGHT EDGE LINES.
3. THE EXACT MARKER LIMITS, SPACING, AND COLOR SHOULD BE INCLUDED IN THE PLANS.
4. MARKERS SHOULD NOT BE USED ALONGSIDE CURBS EXCEPT FOR EXTREMELY SHORT SECTIONS OF CURBS WHERE NOT MORE THAN TWO MARKERS WOULD BE INVOLVED.



LEFT TURN

\* SEE TWO-LANE/TWO-WAY WHERE MARKERS CONTINUE  
 \*\* WHERE THE MEDIAN WIDTH IS 6' (2 m) OR LESS USE TWO-WAY MARKERS.

All dimensions are in inches (millimeters) unless otherwise shown.

| REVISIONS    |          |
|--------------|----------|
| NAME         | DATE     |
| T. RAMMACHER | 09-19-94 |
| T. RAMMACHER | 03-12-99 |
| T. RAMMACHER | 01-06-00 |
|              |          |
|              |          |
|              |          |
|              |          |
|              |          |

ILLINOIS DEPARTMENT OF TRANSPORTATION  
 TYPICAL APPLICATIONS  
 RAISED REFLECTIVE PAVEMENT MARKERS (SNOW-PLOW RESISTANT)

SCALE: NONE

DRAWN BY CADD  
 CHECKED BY  
 TC-11

|                             |                     |
|-----------------------------|---------------------|
| FILE NAME =                 | USER NAME = gthesse |
| ...pIn51709_Dist1_Det06.dgn |                     |
| PLOT SCALE = N.T.S.         |                     |
| PLOT DATE = 4/17/2009       |                     |

|            |           |
|------------|-----------|
| DESIGNED - | REVISED - |
| DRAWN -    | REVISED - |
| CHECKED -  | REVISED - |
| DATE -     | REVISED - |

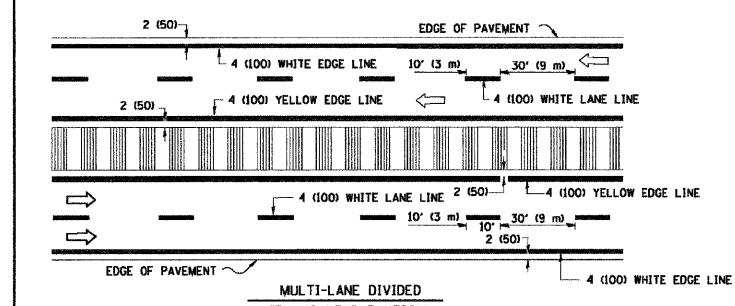
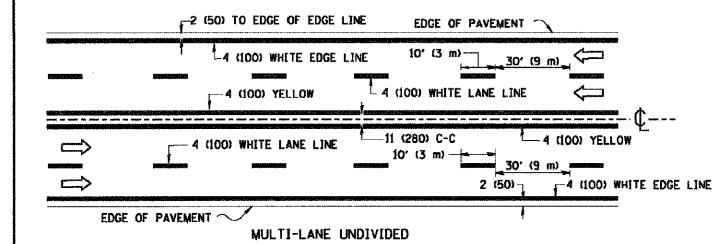
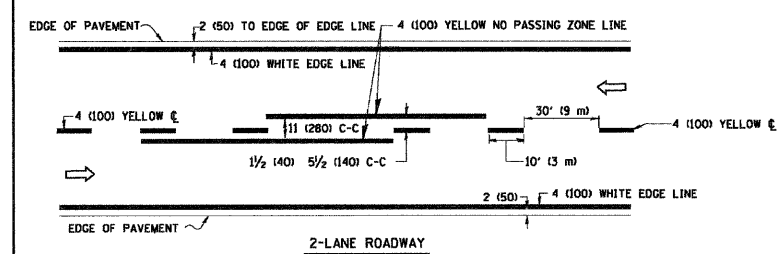
STATE OF ILLINOIS  
 DEPARTMENT OF TRANSPORTATION

|  |           |           |      |         |
|--|-----------|-----------|------|---------|
| TYPICAL APPLICATIONS<br>RAISED REFLECTIVE PAVEMENT MARKERS (SNOW-PLOW RESISTANT) |           |           |      |         |
| SCALE:   | SHEET NO. | OF SHEETS | STA. | TO STA. |

|                     |                   |        |                           |           |
|---------------------|-------------------|--------|---------------------------|-----------|
| F.A. RTE.           | SECTION           | COUNTY | TOTAL SHEETS              | SHEET NO. |
| 3512                | (88 Y & 88-1)RS-4 | COOK   | 22                        | 16        |
| FED. ROAD DIST. NO. |                   |        | ILLINOIS FED. AID PROJECT |           |
|                     |                   |        | CONTRACT NO. 60G61        |           |

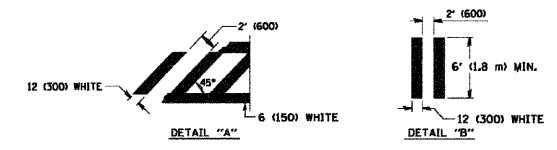
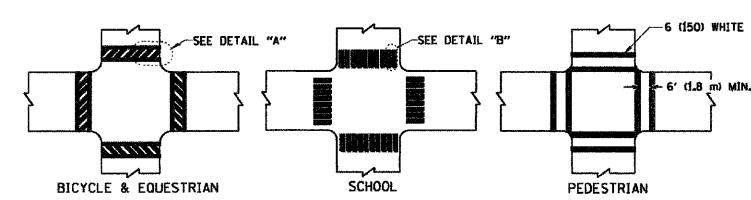
CONTRACT NO.

|                     |                           |        |              |           |
|---------------------|---------------------------|--------|--------------|-----------|
| F.A. RTE.           | SECTION                   | COUNTY | TOTAL SHEETS | SHEET NO. |
| STA.                | TO STA.                   |        |              |           |
| FED. ROAD DIST. NO. | ILLINOIS FED. AID PROJECT |        |              |           |

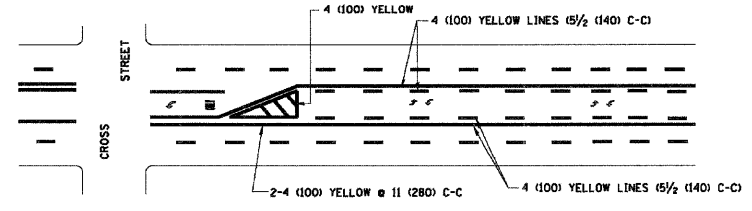
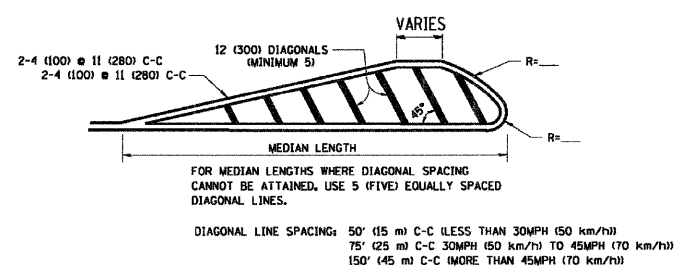
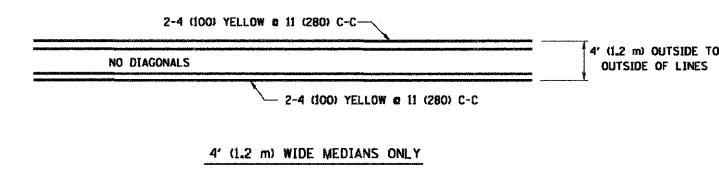


NOTE: MEDIANS WITH BARRIER CURB DO NOT REQUIRE AN EDGE LINE

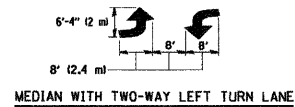
TYPICAL LANE AND EDGE LINE MARKING



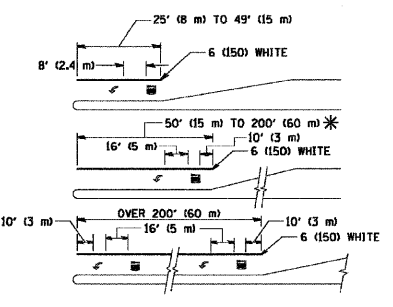
TYPICAL CROSSWALK MARKING



A MINIMUM OF TWO PAIRS OF TURN ARROWS SHALL BE USED, WHITE IN COLOR. ADDITIONAL PAIRS SHALL BE PLACED AT 200' (60 m) TO 300' (90 m) INTERVALS.



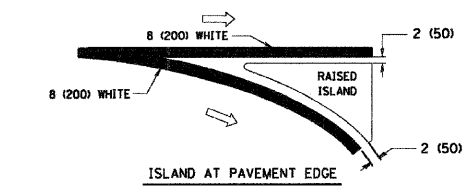
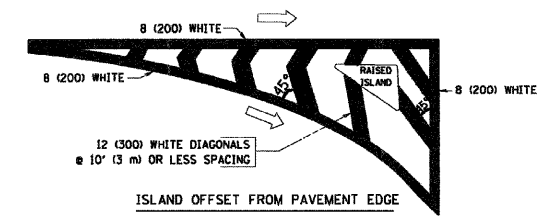
TYPICAL PAINTED MEDIAN MARKING



FULL SIZE LETTERS 8' (2.4 m) AND ARROWS SHALL BE USED. AREA = 15.6 SQ. FT. (1.5 m<sup>2</sup>) ONLY AREA = 20.8 SQ. FT. (1.9 m<sup>2</sup>) \* TURN LANES IN EXCESS OF 400' (120 m) IN LENGTH MAY HAVE AN ADDITIONAL SET OF ARROW - "ONLY" INSTALLED MIDWAY BETWEEN THE OTHER TWO SETS OF ARROW - "ONLY".

TYPICAL LEFT (OR RIGHT) TURN LANE

TYPICAL TURN LANE MARKING



TYPICAL ISLAND MARKING

| TYPE OF MARKING   | WIDTH OF LINE  | PATTERN                         | COLOR   | SPACING / REMARKS  |
|---|--|---------------------------------|---|--|
| CENTERLINE ON 2 LANE PAVEMENT   | 4 (100)  | SKIP-DASH                       | YELLOW  | 10' (3 m) LINE WITH 30' (9 m) SPACE  |
| CENTERLINE ON MULTI-LANE UNDIVIDED PAVEMENT   | 2 @ 4 (100)  | SOLID                           | YELLOW  | 11 (280) C-C   |
| NO PASSING ZONE LINES: FOR ONE DIRECTION FOR BOTH DIRECTIONS                                | 4 (100)<br>2 @ 4 (100)   | SOLID<br>SOLID                  | YELLOW<br>YELLOW                                  | 5/2 (140) C-C FROM SKIP-DASH CENTERLINE<br>11 (280) C-C<br>OMIT SKIP-DASH CENTERLINE BETWEEN   |
| LANE LINES  | 4 (100)<br>5 (125) ON FREEWAYS   | SKIP-DASH<br>SKIP-DASH          | WHITE<br>WHITE                                    | 10' (3 m) LINE WITH 30' (9 m) SPACE  |
| DOTTED LINES (EXTENSIONS OF CENTER, LANE OR TURN LANE MARKINGS)                             | SAME AS LINE BEING EXTENDED  | SKIP-DASH                       | SAME AS LINE BEING EXTENDED                       | 2' (600) LINE WITH 6' (1.8 m) SPACE  |
| EDGE LINES  | 4 (100)  | SOLID                           | YELLOW-LEFT<br>WHITE-RIGHT                        | OUTLINE MOUNTABLE MEDIANS IN YELLOW; EDGE LINES ARE NOT USED NEXT TO BARRIER CURB  |
| TURN LANE MARKINGS  | 6 (150) LINE; FULL SIZE LETTERS & SYMBOLS (8" (2.4m))                                      | SOLID                           | WHITE   | SEE TYPICAL TURN LANE MARKING DETAIL   |
| TWO WAY LEFT TURN MARKING   | 2 @ 4 (100) EACH DIRECTION<br>8' (2.4m) LEFT ARROW   | SKIP-DASH AND SOLID<br>IN PAIRS | YELLOW<br>WHITE                                   | 10' (3 m) LINE WITH 30' (9 m) SPACE FOR SKIP-DASH 5/2 (140) C-C BETWEEN SOLID LINE AND SKIP-DASH LINE<br>SEE TYPICAL TWO-WAY LEFT TURN MARKING DETAIL              |
| CROSSWALK LINES (PEDESTRIAN A. DIAGONALS (BIRE & EQUESTRIAN) B. LONGITUDINAL BARS (SCHOOL)) | 2 @ 6 (150)<br>12 (300) @ 45°<br>12 (300) @ 90°  | SOLID<br>SOLID                  | WHITE<br>WHITE                                    | NOT LESS THAN 6' (1.8 m) APART<br>2' (600) APART<br>2' (600) APART<br>SEE TYPICAL CROSSWALK MARKING DETAILS.   |
| STOP LINES  | 24 (600)   | SOLID                           | WHITE   | PLACE 4' (1.2 m) IN ADVANCE OF AND PARALLEL TO CROSSWALK, IF PRESENT. OTHERWISE, PLACE AT DESIRED STOPPING POINT. PARALLEL TO CROSSROAD CENTERLINE, WHERE POSSIBLE |
| PAINTED MEDIANS   | 2 @ 4 (100) WITH 12 (300) DIAGONALS @ 45°<br>NO DIAGONALS USED FOR 4' (1.2 m) WIDE MEDIANS | SOLID                           | YELLOW: TWO WAY TRAFFIC<br>WHITE: ONE WAY TRAFFIC | 11 (280) C-C FOR THE DOUBLE LINE<br>SEE TYPICAL PAINTED MEDIAN MARKING.  |
| GORE MARKING AND CHANNELIZING LINES   | 8 (200) WITH 12 (300) DIAGONALS @ 45°  | SOLID                           | WHITE   | DIAGONALS:<br>15' (4.5 m) C-C (LESS THAN 30MPH (50 km/h))<br>20' (6 m) C-C (30MPH (50 km/h) TO 45MPH (70 km/h))<br>30' (9 m) C-C (OVER 45MPH (70 km/h))            |
| RAILROAD CROSSING   | 24 (600) TRANSVERSE LINES; "RR" IS 6' (1.8 m) LETTERS; 16 (400) LINE FOR "X"               | SOLID                           | WHITE   | SEE STATE STANDARD 78001<br>AREA OF:<br>"R"=3.6 SQ. FT. (0.33 m <sup>2</sup> ) EACH<br>"X"=54.0 SQ. FT. (5.0 m <sup>2</sup> )                                      |
| SHOULDER DIAGONALS  | 12 (300) @ 45°   | SOLID                           | WHITE - RIGHT<br>YELLOW - LEFT                    | 50' (15 m) C-C (LESS THAN 30MPH (50 km/h))<br>75' (25 m) C-C (30 MPH (50 km/h) TO 45MPH (70 km/h))<br>150' (45 m) C-C (OVER 45MPH (70 km/h))                       |

FOR FURTHER DETAILS ON PAVEMENT MARKING REFER TO STANDARD SPECIFICATIONS FOR ROAD AND BRIDGE CONSTRUCTION AND STATE STANDARD 78001.

All dimensions are in inches (millimeters) unless otherwise shown.

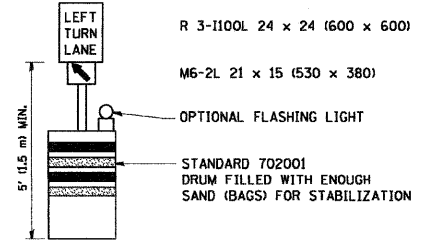
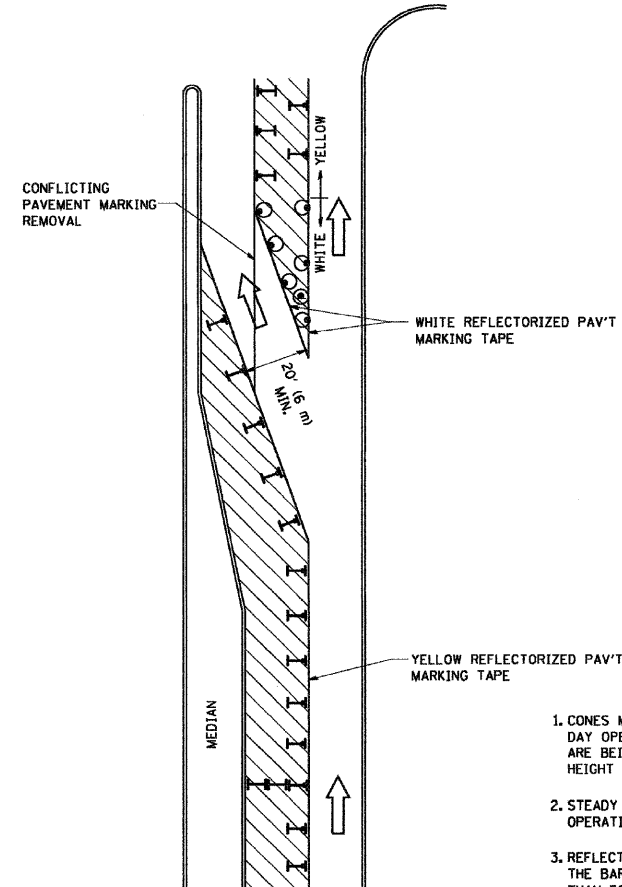
| REVISIONS    |          |
|--------------|----------|
| NAME         | DATE     |
| EVERS        | 03-19-90 |
| T. RAMMACHER | 10-27-94 |
| ALEX HOUSEH  | 10-09-96 |
| ALEX HOUSEH  | 10-17-96 |
| T. RAMMACHER | 01-06-00 |

ILLINOIS DEPARTMENT OF TRANSPORTATION  
DISTRICT ONE  
TYPICAL PAVEMENT MARKINGS

SCALE: NONE  
DRAWN BY CADD  
CHECKED BY TC-13

|   |                     |  |  |   |   |                   |                               |                |                    |                 |                    |
|---|---------------------|--|--|---|---|-------------------|-------------------------------|----------------|--------------------|-----------------|--------------------|
| FILE NAME =<br>...p\In51709_01st1_0e107.dgn | USER NAME = gthesse | DESIGNED -<br>DRAWN -<br>CHECKED -<br>DATE - | REVISED -<br>REVISED -<br>REVISED -<br>REVISED - | STATE OF ILLINOIS<br>DEPARTMENT OF TRANSPORTATION | DISTRICT ONE<br>TYPICAL PAVEMENT MARKINGS | F.A. RTE.<br>3512 | SECTION<br>(88 Y & 88-1Y)RS-4 | COUNTY<br>COOK | TOTAL SHEETS<br>22 | SHEET NO.<br>17 | CONTRACT NO. 60G61 |
|---|---------------------|--|--|---|---|-------------------|-------------------------------|----------------|--------------------|-----------------|--------------------|

|                     |          |                  |              |           |
|---------------------|----------|------------------|--------------|-----------|
| CONTRACT NO.        |          |                  |              |           |
| F.A. RTE.           | SECTION  | COUNTY           | TOTAL SHEETS | SHEET NO. |
| STA.                | TO STA.  |                  |              |           |
| FED. ROAD DIST. NO. | ILLINOIS | FED. AID PROJECT |              |           |



**GENERAL NOTES**

1. CONES MAY BE SUBSTITUTED FOR BARRICADES OR DRUMS AT HALF THE SPACING DURING DAY OPERATIONS. CONES SHALL BE A MINIMUM OF 28 (710) IN HEIGHT. WHEN CONES ARE BEING USED, THE "LEFT TURN LANE" SIGN MAY BE SKID MOUNTED AT A MINIMUM HEIGHT OF 5' (1.5 m).
2. STEADY BURNING LIGHTS WILL NOT BE REQUIRED ON BARRICADES OR DRUMS FOR DAY OPERATIONS. ALL LIGHTS SHALL BE MONODIRECTIONAL.
3. REFLECTORIZED TEMPORARY PAVEMENT MARKING TAPE SHALL BE PLACED THROUGHOUT THE BARRICADED AREA OF EACH TURN BAY WHERE THE CLOSURE TIME IS GREATER THAN FOURTEEN DAYS.
4. THIS APPLICATION ALSO APPLIES WHEN WORK IS BEING PERFORMED IN THE RIGHT LANE(S) AND THE RIGHT TURN BAY IS TO REMAIN OPEN. UNDER THIS CONDITION, "RIGHT TURN LANE" R3-100 24 x 24 (600 x 600) AND M6-2R 21 x 15 (530 x 380) SHALL BE USED.
5. THESE CONTROLS SHALL SUPPLEMENT MAINLINE TRAFFIC CONTROL FOR LANE CLOSURES.
6. LONGITUDINAL DIMENSIONS MAY BE ADJUSTED TO FIT FIELD CONDITIONS.
7. FORM BT 725 IS REQUIRED.
8. TRAFFIC CONTROL AND PROTECTION AT TURN BAYS (TO REMAIN OPEN TO TRAFFIC) SHALL BE INCLUDED IN THE COST SPECIFIED TRAFFIC CONTROL STANDARDS OR ITEMS.

All dimensions are in inches (millimeters) unless otherwise shown.

**LEGEND**

- WORK AREA
- LANE OPEN TO TRAFFIC
- TYPE I OR II BARRICADE WITH STEADY BURN LIGHT
- DRUM WITH STEADY BURN LIGHT
- DRUM WITH SIGN (WITH OPTIONAL FLASHING LIGHT) SEE DETAIL
- TYPE I OR II CHECK BARRICADE WITH FLASHING LIGHT

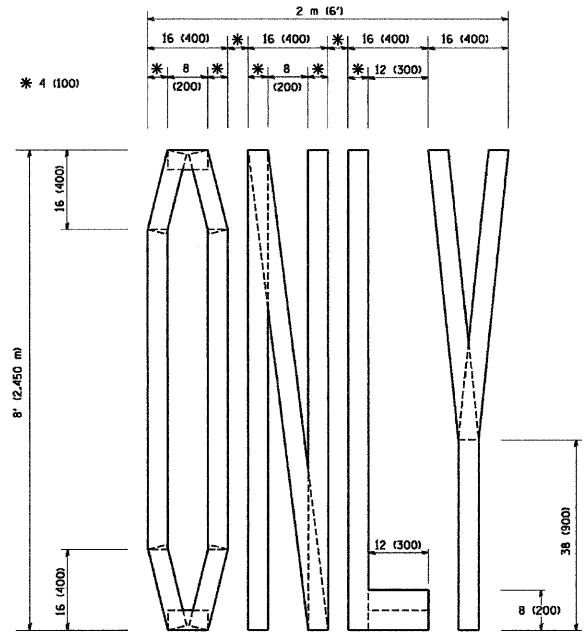
| REVISIONS    |          |
|--------------|----------|
| NAME         | DATE     |
| T. RAMMACHER | 09/08/94 |
| A. HOUSE     | 11/07/95 |
| A. HOUSE     | 10/12/96 |
| T. RAMMACHER | 01/06/00 |
|              |          |
|              |          |
|              |          |
|              |          |

ILLINOIS DEPARTMENT OF TRANSPORTATION  
**TRAFFIC CONTROL AND PROTECTION AT TURN BAYS (TO REMAIN OPEN TO TRAFFIC)**  
 SCALE: NONE  
 DRAWN BY: LHA  
 CHECKED BY: LHA  
 TC-14

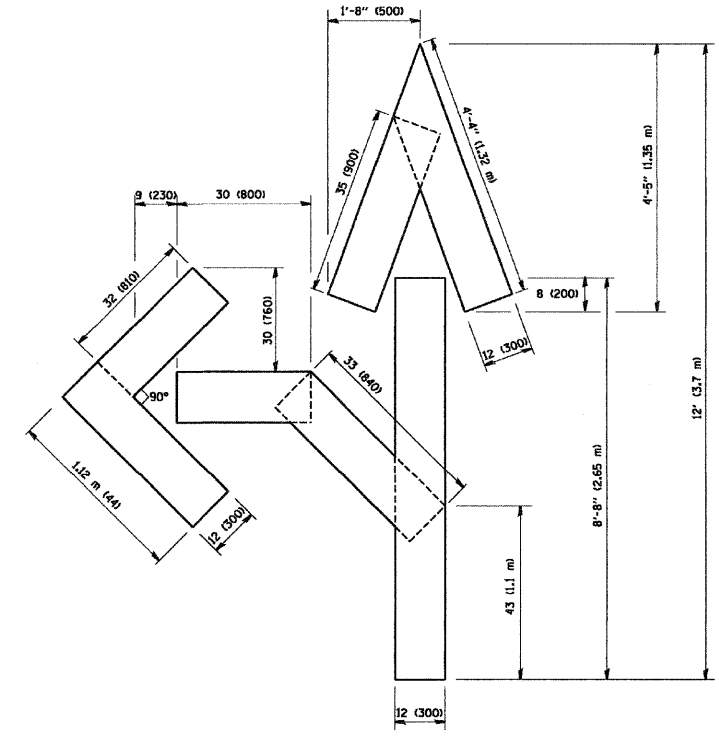
PLOT DATE = 3/16/2009  
 PLOT SCALE = N.T.S.  
 PLOT NAME = 080808.dgn  
 USER NAME = gthesse

|   |                     |             |                    |   |  |                    |           |        |              |                     |
|---|---------------------|-------------|--------------------|---|--|--------------------|-----------|--------|--------------|---------------------|
| FILE NAME =<br>...p\In51709_Dist1_Det08.dgn | USER NAME = gthesse | DESIGNED -  | REVISIONS -        | <b>STATE OF ILLINOIS<br/>DEPARTMENT OF TRANSPORTATION</b> | <b>TRAFFIC CONTROL AND PROTECTION AT TURN BAYS<br/>(TO REMAIN OPEN TO TRAFFIC)</b> | F.A. RTE.          | SECTION   | COUNTY | TOTAL SHEETS | SHEET NO.           |
| PLOT SCALE = N.T.S.                         | CHECKED -           | REVISIONS - | 3512               |   |  | (88 Y & 88-1Y)RS-4 | COOK      | 22     | 18           |                     |
| PLOT DATE = 4/17/2009                       | DATE -              | REVISIONS - | CONTRACT NO. 60661 |   |  |                    |           |        |              |                     |
|   |                     |             | SCALE:             |   |  | SHEET NO.          | OF SHEETS | STA.   | TO STA.      | FED. ROAD DIST. NO. |

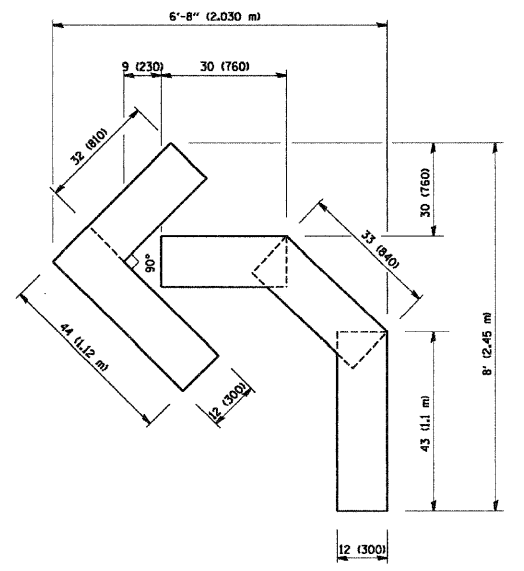
|                     |         |                           |  |           |  |
|---------------------|---------|---------------------------|--|-----------|--|
| CONTRACT NO.        |         | TOTAL SHEETS              |  | SHEET NO. |  |
| F.A. RTE.           | SECTION | COUNTY                    |  |           |  |
| STA.                |         | TO STA.                   |  |           |  |
| FED. ROAD DIST. NO. |         | ILLINOIS FED. AID PROJECT |  |           |  |



QUANTITY  
4 (100) LINE = 64.1 ft. (19.7 m)  
21.1 sq. ft. (1.97 sq. m)



QUANTITY  
4 (100) LINE = 82.5 ft. (25.3 m)  
27.5 sq. ft. (2.53 sq. m)



QUANTITY  
4 (100) LINE = 45.5 ft. (13.9 m)  
15.2 sq. ft. (1.39 sq. m)

All dimensions are in Inches (millimeters) unless otherwise shown.

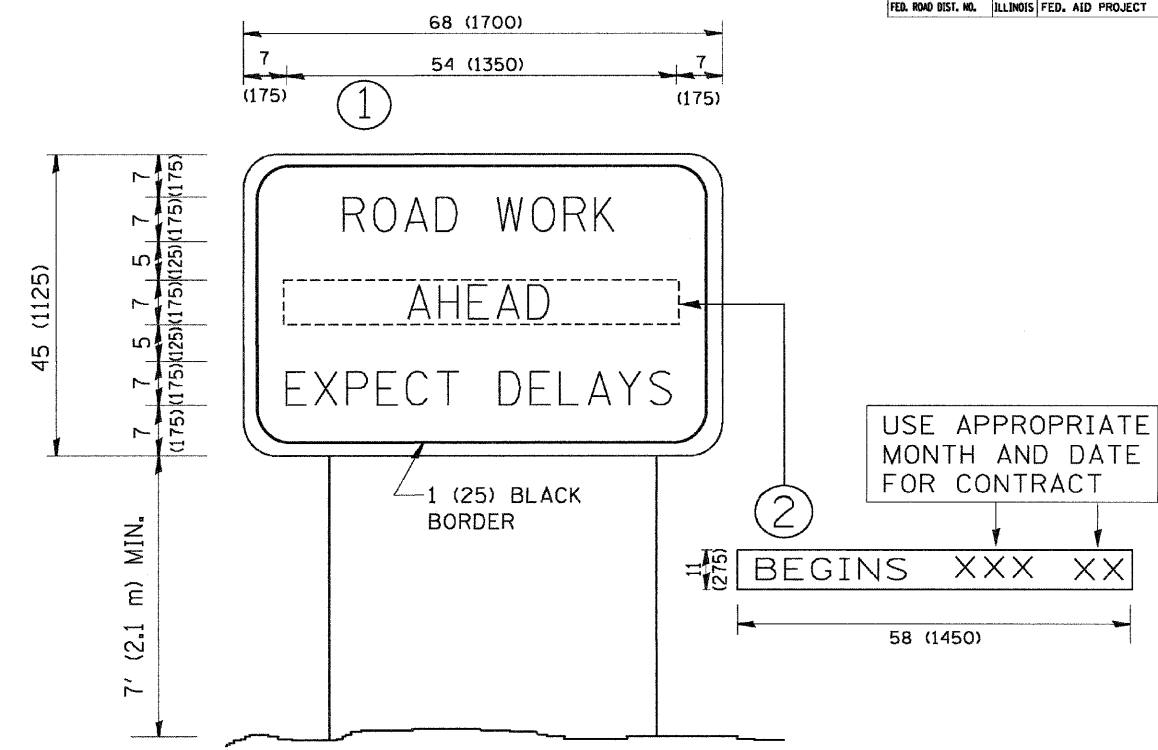
| REVISIONS    |          |
|--------------|----------|
| NAME         | DATE     |
| T. RAMMACHER | 09/18/94 |
| J. OBERLE    | 06/01/96 |
| T. RAMMACHER | 06/05/96 |
| T. RAMMACHER | 11/04/97 |
| T. RAMMACHER | 03/02/98 |
| E. GOMEZ     | 08/28/00 |

ILLINOIS DEPARTMENT OF TRANSPORTATION  
**PAVEMENT MARKING LETTERS AND SYMBOLS FOR TRAFFIC STAGING**  
SCALE: NONE  
DRAWN BY CADD  
CHECKED BY TC-16

PLOT DATE = 4/17/2009  
FILE NAME = K:\data\m\11\11.dgn  
PLOT SCALE = 1/8" = 1'-0"  
USER NAME = gthesse

|  |                     |            |           |   |   |  |  |  |                    |                              |                |                    |                 |
|--|---------------------|------------|-----------|---|---|--|--|--|--------------------|------------------------------|----------------|--------------------|-----------------|
| FILE NAME =<br>...p\11\51709_01st1_0et09.dgn | USER NAME = gthesse | DESIGNED - | REVISED - | <b>STATE OF ILLINOIS<br/>DEPARTMENT OF TRANSPORTATION</b> | <b>PAVEMENT MARKING LETTERS AND SYMBOLS<br/>FOR TRAFFIC STAGING</b> |  |  |  | F.A. RTE.<br>3512  | SECTION<br>88 Y & 88-1Y/RS-4 | COUNTY<br>COOK | TOTAL SHEETS<br>22 | SHEET NO.<br>19 |
| PLOT SCALE = N.T.S.                          | CHECKED -           | REVISED -  | REVISED - |   | SCALE: SHEET NO. OF SHEETS STA. TO STA.                             |  |  |  | CONTRACT NO. 60G61 |                              |                |                    |                 |
| PLOT DATE = 4/17/2009                        | DATE -              | REVISED -  | REVISED - |   | FED. ROAD DIST. NO. ILLINOIS FED. AID PROJECT                       |  |  |  |                    |                              |                |                    |                 |

| CONTRACT NO.        |          |                  |              |           |
|---------------------|----------|------------------|--------------|-----------|
| F.A. RTE.           | SECTION  | COUNTY           | TOTAL SHEETS | SHEET NO. |
|                     |          |                  |              |           |
| STA.                |          | TO STA.          |              |           |
| FED. ROAD DIST. NO. | ILLINOIS | FED. AID PROJECT |              |           |



**NOTES:**

1. USE BLACK LETTERING ON ORANGE BACKGROUND.
2. ERECT SIGNS IN ADVANCE OF THE LOCATION FOR THE "ROAD CONSTRUCTION AHEAD" SIGN AT LOCATIONS AS DIRECTED BY THE ENGINEER.
3. ERECT SIGN ① WITH INSTALLED PANEL ② ONE WEEK PRIOR TO THE START OF CONSTRUCTION.
4. REMOVE PANEL ② SOON AFTER THE START OF CONSTRUCTION.
5. SEE SPECIAL PROVISION FOR "TEMPORARY INFORMATION SIGNING" FOR ADDITIONAL INFORMATION.
6. ONE SIGN ASSEMBLY EQUALS 25.70 SQ. FT. (2.3 SQ. M.)
7. SHALL BE PAID FOR AS TEMPORARY INFORMATION SIGNING.

ALL DIMENSIONS ARE IN INCHES (MILLIMETERS) UNLESS OTHERWISE SHOWN.

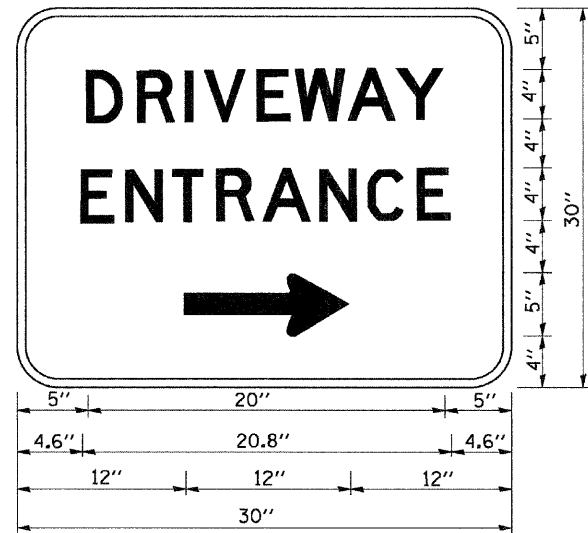
| REVISIONS    |          |
|--------------|----------|
| NAME         | DATE     |
| R. MIRS      | 9-15-97  |
| R. MIRS      | 12-11-97 |
| T. RAMMACHER | 2-2-99   |
| C. JUCIUS    | 1-31-07  |
|              |          |
|              |          |
|              |          |
|              |          |
|              |          |

|                                       |                 |
|---------------------------------------|-----------------|
| ILLINOIS DEPARTMENT OF TRANSPORTATION |                 |
| <b>ARTERIAL ROAD INFORMATION SIGN</b> |                 |
| SCALE: NONE                           | DRAWN BY DESIGN |
|                                       | CHECKED BY      |
|                                       | TC22            |

PLOT DATE = 3/6/2007  
 FILE NAME = ...pIn51709\_Dist1\_Det10.dgn  
 USER NAME = gthesse

|  |                       |            |           |   |   |                    |                   |           |              |           |                     |
|--|-----------------------|------------|-----------|---|---|--------------------|-------------------|-----------|--------------|-----------|---------------------|
| FILE NAME =<br>...pIn51709_Dist1_Det10.dgn | USER NAME = gthesse   | DESIGNED - | REVISED - | <b>STATE OF ILLINOIS<br/>DEPARTMENT OF TRANSPORTATION</b> | <b>ARTERIAL ROAD<br/>INFORMATION SIGN</b> | F.A. RTE.          | SECTION           | COUNTY    | TOTAL SHEETS | SHEET NO. |                     |
|  | PLOT SCALE = N.T.S.   | DRAWN -    | REVISED - |   |   | 3512               | (88 Y & 88-1YRS-4 | COOK      | 22           | 20        |                     |
|  | PLOT DATE = 4/17/2009 | CHECKED -  | REVISED - |   |   | CONTRACT NO. 60661 |                   |           |              |           |                     |
|  |                       | DATE -     | REVISED - |   |   | SCALE:             | SHEET NO.         | OF SHEETS | STA.         | TO STA.   | FED. ROAD DIST. NO. |

|                     |          |                  |                 |
|---------------------|----------|------------------|-----------------|
| CONTRACT NO.        |          |                  |                 |
| F.A. RTE.           | SECTION  | COUNTY           | TOTAL SHEET NO. |
|                     |          |                  |                 |
| STA.                | TO STA.  |                  |                 |
| FED. ROAD DIST. NO. | ILLINOIS | FED. AID PROJECT |                 |



3.0" RADIUS, 0.5" BORDER, WHITE ON GREEN; REFLECTORIZED  
 "DRIVEWAY" D; "ENTRANCE" D; STANDARD ARROW CUSTOM 12.0" x 5.0"

**NOTES:**

1. HALF OF THE SIGNS WILL REQUIRE A LEFT HAND FACING ARROW.
2. TWO SIGNS SHALL BE USED AT EACH COMMERCIAL ENTRANCE  
 PLACED BACK-TO-BACK: ONE WITH A RIGHT HAND ARROW (SHOWN)  
 SHALL BE PLACED ON THE NEAR RIGHT SIDE THE DRIVEWAY  
 AND ONE WITH A LEFT HAND ARROW SHALL BE PLACED ON THE  
 FAR LEFT SIDE OF THE DRIVEWAY.
3. SIGNS TO BE PAID FOR AS ITEM "TEMPORARY INFORMATION SIGNING".

PLOT DATE = 3/9/2007  
 PLOT SCALE = 1/8" = 1'-0"  
 USER NAME = bboard

| REVISIONS |          |
|-----------|----------|
| NAME      | DATE     |
| C. JUCIUS | 02/15/07 |
|           |          |
|           |          |
|           |          |
|           |          |
|           |          |
|           |          |
|           |          |
|           |          |

ILLINOIS DEPARTMENT OF TRANSPORTATION

**DRIVEWAY ENTRANCE  
SIGNING**

SCALE: NONE  
DATE

DRAWN BY R.H.  
CHECKED BY  
TC-26

|   |                     |                       |           |   |                                      |           |    |        |   |         |        |                    |           |       |
|---|---------------------|-----------------------|-----------|---|--------------------------------------|-----------|----|--------|---|---------|--------|--------------------|-----------|-------|
| FILE NAME =<br>...p\in51709_Dist1_Det11.dgn | USER NAME = gthesse | DESIGNED -            | REVISED - | <b>STATE OF ILLINOIS<br/>DEPARTMENT OF TRANSPORTATION</b> | <b>DRIVEWAY ENTRANCE<br/>SIGNING</b> |           |    |        | F.A. RTE.                                     | SECTION | COUNTY | TOTAL SHEETS       | SHEET NO. |       |
|   |                     | DRAWN -               | REVISED - |   | SCALE:                               | SHEET NO. | OF | SHEETS | STA.  | TO STA. | 3512   | (88 Y & 88-1Y)RS-4 | COOK      | 22 21 |
|   |                     | CHECKED -             | REVISED - |   |                                      |           |    |        | CONTRACT NO. 60661                            |         |        |                    |           |       |
|   |                     | PLOT DATE = 4/17/2009 | REVISED - |   |                                      |           |    |        | FED. ROAD DIST. NO. ILLINOIS FED. AID PROJECT |         |        |                    |           |       |

