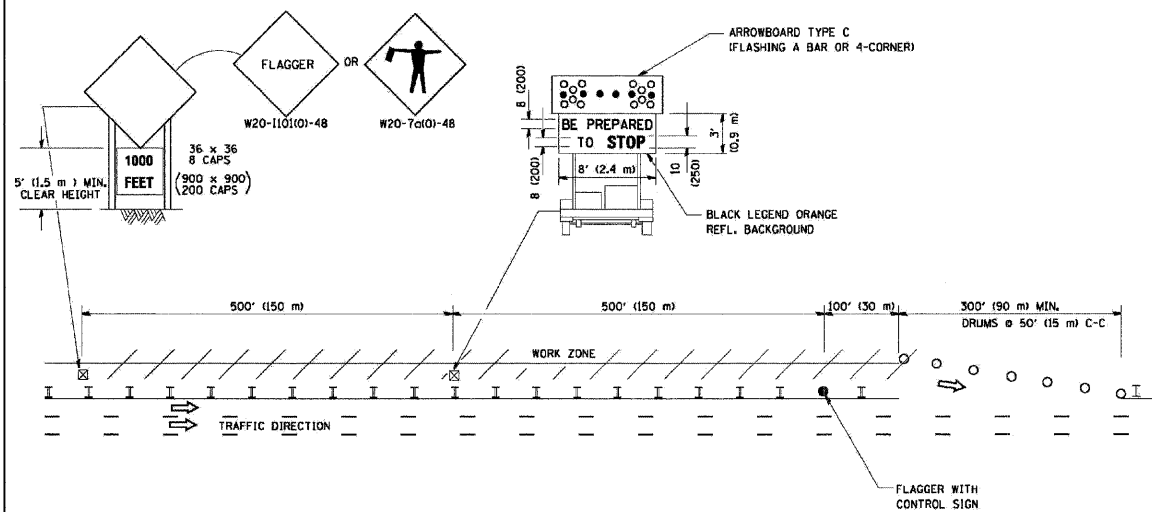
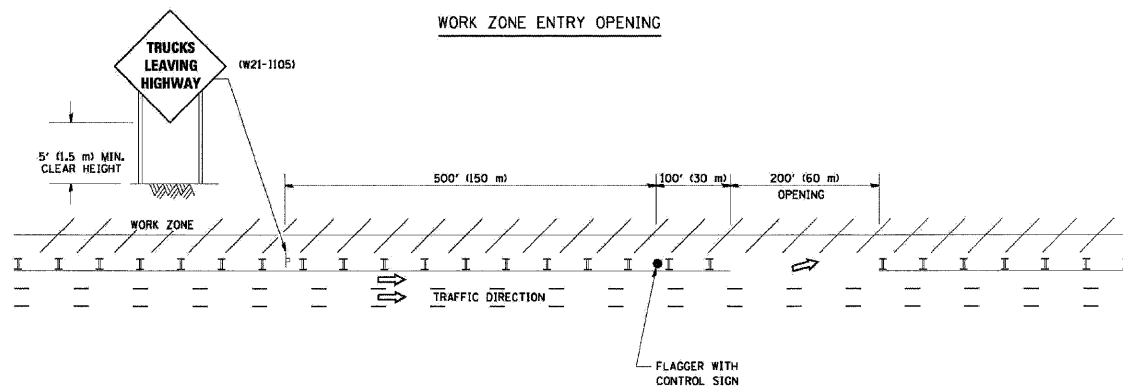


SIGNING FOR FLAGGING OPERATIONS AT WORK ZONE OPENINGS

WORK ZONE EXIT OPENING



WORK ZONE ENTRY OPENING



NOTES:

1. The Arrowboard, the Flagger Ahead trailer mounted sign, and the Trucks Leaving Highway sign shall be removed or turned away from traffic and the exit and entry openings shall be closed when the flagging operation ceases.
2. Work Zone Exit Openings should be a minimum of one half mile apart.
3. Exiting the work zone at any place other than at a Work Zone Exit Opening will be prohibited.
4. All vehicles shall enter the work zone at entry openings, using their turn signals to warn motorists

ALL DIMENSIONS ARE IN INCHES (MILLIMETERS) UNLESS OTHERWISE SHOWN

SIGNING FOR FLAGGING OPERATIONS AT WORK ZONE OPENINGS

FILE NAME = ...Aurora-Batavia\Details.dgn	USER NAME = Plotted by Administrator	DESIGNED - ---	REVISED - ---	STATE OF ILLINOIS DEPARTMENT OF TRANSPORTATION	DISTRICT ONE DETAIL SHEETS IL ROUTE 25 FROM SPRING STREET TO LAUREL STREET			F.A.U. RTE. 2503	SECTION (53 + 54) RS7	COUNTY KANE	TOTAL SHEETS 38	SHEET NO. 34
	PLOT SCALE = 25.0000' / IN.	CHECKED - ---	REVISED - ---		SCALE: NONE	SHEET NO. 13 OF 17 SHEETS	STA. _____ TO STA. _____	CONTRACT NO. 60G67				
PLOT DATE = 4/15/2009	DATE = 4/2009	REVISED - ---	REVISED - ---	FED. ROAD DIST. NO. ILLINOIS FED. AID PROJECT								