

F.A.U. RTE.	SECTION	COUNTY	TOTAL SHEETS	SHEET NO.
297	1-G-RS-1	WILL	1	1
FED. ROAD DIST. NO.	ILLINOIS	CONTRACT NO. 60G94		

D-91-550-09

STATE OF ILLINOIS
DEPARTMENT OF TRANSPORTATION
DIVISION OF HIGHWAYS

**PROPOSED
HIGHWAY PLANS**

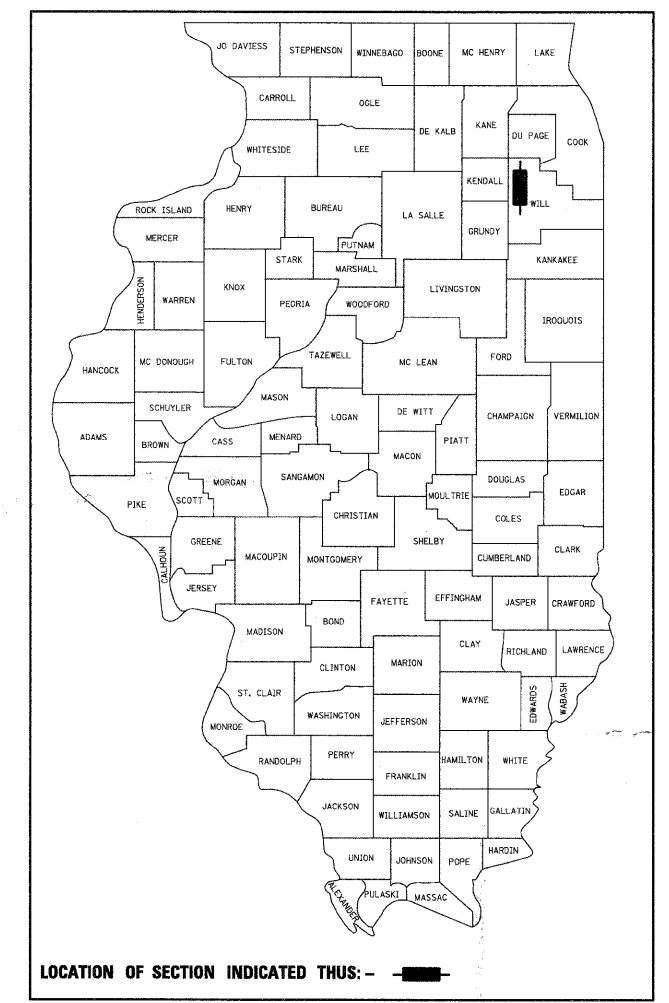
OTHER ROUTE 297 (HOFF ROAD)
IL ROUTE 53 TO OLD CHICAGO ROAD

SECTION: 1-G-RS-1
RESURFACING (3P)

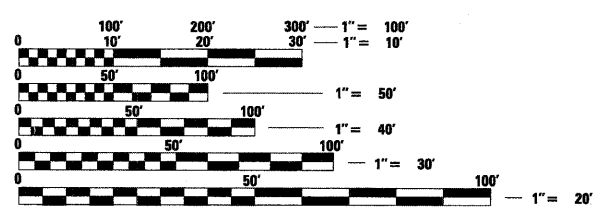
WILL COUNTY
C-91-550-09

FOR INDEX OF SHEETS, SEE SHEET NO. 2

ADT 5000 (2009)
SPEED LIMIT 50 MPH



LOCATION OF SECTION INDICATED THUS: - [black box] -



FULL SIZE PLANS HAVE BEEN PREPARED USING STANDARD ENGINEERING SCALES. REDUCED SIZED PLANS WILL NOT CONFORM TO STANDARD SCALES. IN MAKING MEASUREMENTS ON REDUCED PLANS, THE ABOVE SCALES MAY BE USED.

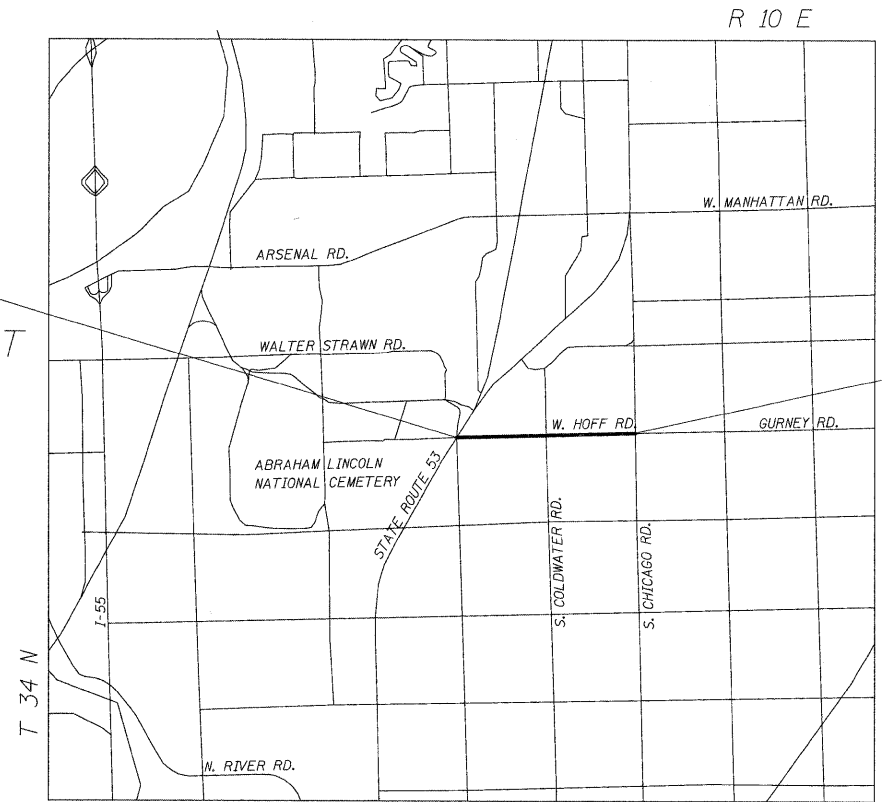
J.U.L.I.E.
JOINT UTILITY LOCATION INFORMATION FOR EXCAVATION
1-800-892-0123
OR 811

PROJECT ENGINEER: REJENDRA C. SHAH (847) 705-4555
PROJECT MANAGER: CATHERINE KIBBLE (847) 705-4269

CONTRACT NO. 60G94



STA. 43+00
BEGIN PROJECT



STA. 173+00
BEGIN PROJECT

LOCATION SKETCH

NET AND GROSS LENGTH OF PROJECT = 9,000' = 1.705 MI

STATE OF ILLINOIS
DEPARTMENT OF TRANSPORTATION
DIVISION OF HIGHWAYS

SUBMITTED APRIL 15, 2009
Diane M. O'Keefe DEPUTY DIRECTOR OF HIGHWAYS, REGION ENGINEER
May 1, 2009
Charles J. Ingersoll ENGINEER OF DESIGN AND ENVIRONMENT
May 1, 2009
Christine M. Reed DIRECTOR OF HIGHWAYS, CHIEF ENGINEER

PRINTED BY THE AUTHORITY
OF THE STATE OF ILLINOIS

LONGO, INC.
CONSULTING ENGINEERS
1560 WALL ST., SUITE 222
NAPEVILLE, ILLINOIS 60563 PH: (630) 577-9100



WJL
Expires 11-30-09