

F.A.U. RTE.	SECTION	COUNTY	TOTAL SHEETS	SHEET NO.
3726	(112 & 112X) RS-7	LAKE/COOK	19	1
FED. ROAD DIST. NO. 1	ILLINOIS	CONTRACT NO. 60H03		

# STATE OF ILLINOIS

## DEPARTMENT OF TRANSPORTATION

### DIVISION OF HIGHWAYS

# PROPOSED HIGHWAY PLANS

## F.A.U. 3726 (LAKE-COOK ROAD /SHERIDAN ROAD) SECTION (112 & 112X) RS-7 GREEN BAY ROAD TO SHERIDAN ROAD (EAST JUNCTION) RESURFACING (3P)

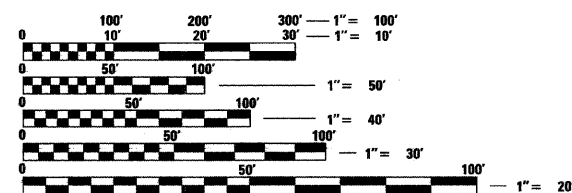
### LAKE /COOK COUNTY C-91-559-09

FOR INDEX OF SHEETS, SEE SHEET NO. 2

THESE IMPROVEMENTS ARE LOCATED WITHIN  
THE VILLAGE OF GLENCOE AND CITY OF HIGHLAND PARK

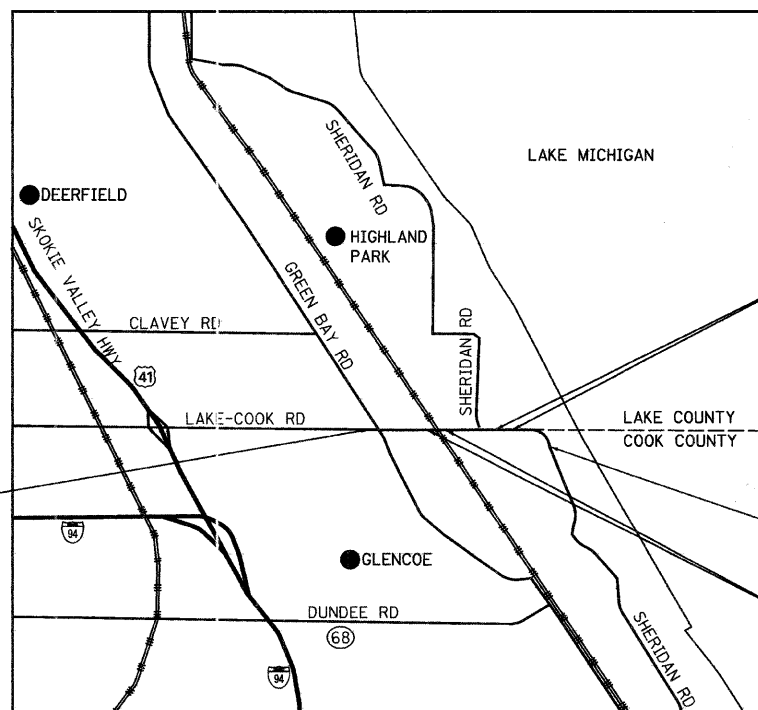
#### TRAFFIC DATA

2006 ADT - 6,600  
POSTED SPEED LIMIT - 35 MPH



FULL SIZE PLANS HAVE BEEN PREPARED USING STANDARD ENGINEERING SCALES. REDUCED SIZED PLANS WILL NOT CONFORM TO STANDARD SCALES. IN MAKING MEASUREMENTS ON REDUCED PLANS, THE ABOVE SCALES MAY BE USED.

J.U.L.I.E.  
JOINT UTILITY LOCATION INFORMATION FOR EXCAVATION  
1-800-892-0123  
OR 811



BEGIN PROJECT  
STA. 102+96

133+75  
OMISSION  
135+94

END PROJECT  
STA. 148+00

117+74  
OMISSION  
118+60

**Giorba Group, Inc.**

DESIGN FIRM  
REGISTRATION NUMBER  
184-001016  
CONSULTING ENGINEERS  
SUITE 402, 5507 NORTH CUMBERLAND AVE  
CHICAGO, ILLINOIS 60656 ☎ (773) 775-4009

R 12E | R 13E

MORAINÉ & NEW TRIER TOWNSHIP

LOCATION MAP  
1" = 2,500'

GROSS LENGTH OF PROJECT = 4,504 FT = 0.85 MI.  
NET LENGTH OF PROJECT = 4,199 FT = 0.80 MI.



DATE: 4/13/2009  
SEAL EXPIRES: 11/30/2009

STATE OF ILLINOIS  
DEPARTMENT OF TRANSPORTATION  
DIVISION OF HIGHWAYS

SUBMITTED APRIL 14, 2009

Diana M. O'Keefe  
DEPUTY DIRECTOR OF HIGHWAYS, REGION ENGINEER

May 1, 2009  
Charles E. Ingersoll  
ENGINEER OF DESIGN AND ENVIRONMENT

May 1, 2009  
Christine M. Reed  
DIRECTOR OF HIGHWAYS, CHIEF ENGINEER

**PRINTED BY THE AUTHORITY  
OF THE STATE OF ILLINOIS**

DISTRICT 1 DESIGN PLAN PREPARATION ENGINEER: K. ENG (847)705-4247

CONTRACT NO. 60H03