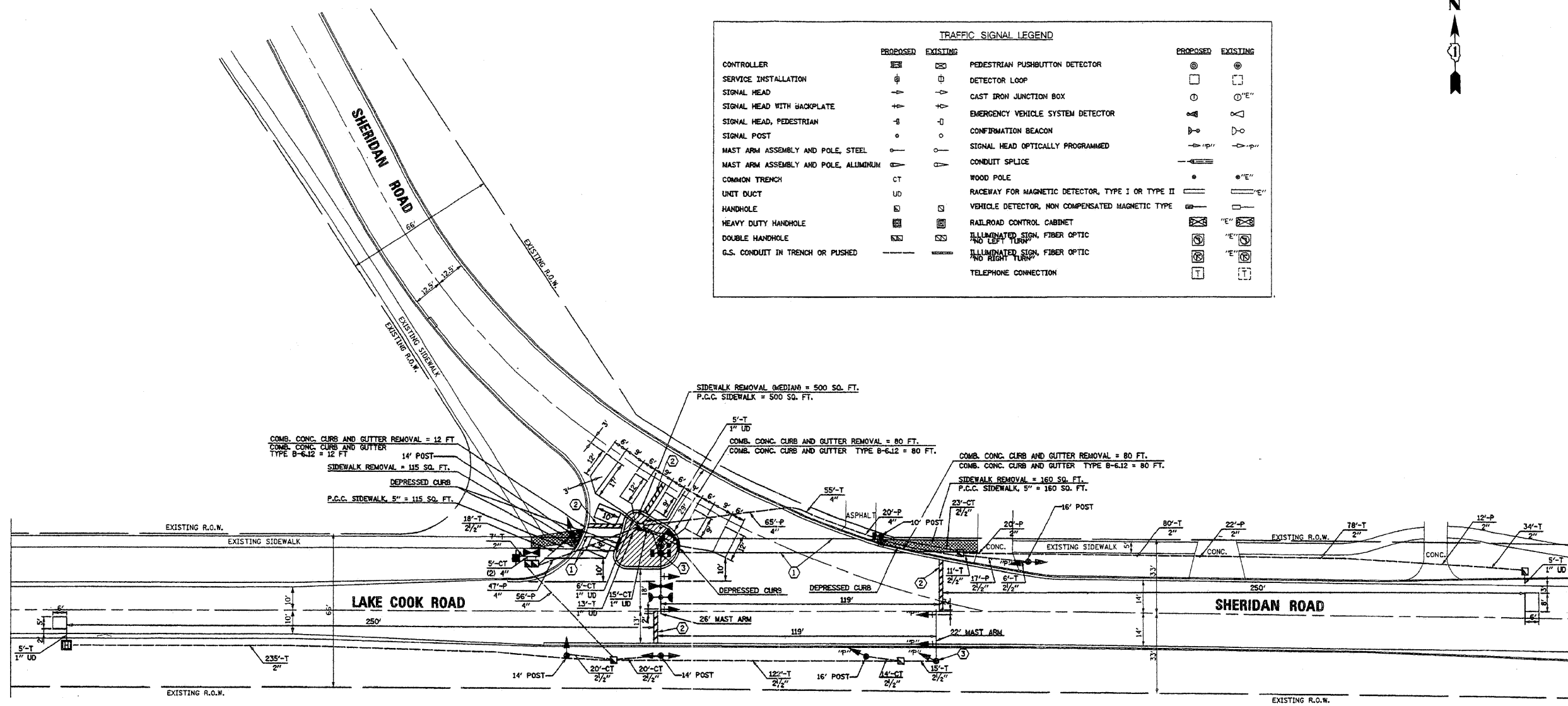




TRAFFIC SIGNAL LEGEND					
	PROPOSED	EXISTING		PROPOSED	EXISTING
CONTROLLER	⊠	⊠	PEDESTRIAN PUSHBUTTON DETECTOR	⊙	⊙
SERVICE INSTALLATION	⊕	⊕	DETECTOR LOOP	□	□
SIGNAL HEAD	⊖	⊖	CAST IRON JUNCTION BOX	⊙	⊙
SIGNAL HEAD WITH BACKPLATE	⊖	⊖	EMERGENCY VEHICLE SYSTEM DETECTOR	⊖	⊖
SIGNAL HEAD, PEDESTRIAN	⊖	⊖	CONFIRMATION BEACON	⊖	⊖
SIGNAL POST	⊙	⊙	SIGNAL HEAD OPTICALLY PROGRAMMED	⊖	⊖
MAST ARM ASSEMBLY AND POLE, STEEL	⊖	⊖	CONDUIT SPLICE	⊖	⊖
MAST ARM ASSEMBLY AND POLE, ALUMINUM	⊖	⊖	WOOD POLE	⊙	⊙
COMMON TRENCH	CT	CT	RACEWAY FOR MAGNETIC DETECTOR, TYPE I OR TYPE II	⊖	⊖
UNIT DUCT	UD	UD	VEHICLE DETECTOR, NON COMPENSATED MAGNETIC TYPE	⊖	⊖
HANDHOLE	⊖	⊖	RAILROAD CONTROL CABINET	⊖	⊖
HEAVY DUTY HANDHOLE	⊖	⊖	ILLUMINATED SIGN, FIBER OPTIC AND LEFT TURN	⊖	⊖
DOUBLE HANDHOLE	⊖	⊖	ILLUMINATED SIGN, FIBER OPTIC AND RIGHT TURN	⊖	⊖
G.S. CONDUIT IN TRENCH OR PUSHED	---	---	TELEPHONE CONNECTION	⊖	⊖



REPLACE ALL DETECTOR LOOPS AS SHOWN
(WITHIN PROJECT LIMITS)

CODE NO.	QUANTITY	UNIT	ITEM
86600600	70	FOOT	DETECTOR LOOP REPLACEMENT

FILE NAME = n:\p\proj\33888\33888_15\design\signal\33888_15\Loopa02.dgn

Ciorba Group, Inc.
CONSULTING ENGINEERS
5507 North Cumberland Avenue, Suite 402
Chicago, Illinois 60656
Tel. 773.775.4009 Fax 773.775.4014

USER NAME = elou	DESIGNED - MBT	REVISED -
PLOT SCALE = 1:2000 / IN.	DRAWN - AL	REVISED -
PLOT DATE = 4/18/2009	CHECKED - WBL	REVISED -
	DATE - 4/16/2009	REVISED -

**STATE OF ILLINOIS
DEPARTMENT OF TRANSPORTATION**

**LAKE-COOK ROAD /SHERIDAN ROAD
GREEN BAY ROAD TO SHERIDAN ROAD (EAST JUNCTION)
DETECTOR LOOP REPLACEMENT PLAN**

F.A.U. RTE.	SECTION	COUNTY	TOTAL SHEETS	SHEET NO.
3726	(112 & 112X) RS-7	LAKE/COOK	19	8
CONTRACT NO. 60H03			FED. ROAD DIST. NO. 1 ILLINOIS FED. AID PROJECT	

SCALE: N.T.S. SHEET NO. 8 OF 19 SHEETS STA. TO STA.