

F.A.P. RTE.	SECTION	COUNTY	TOTAL SHEETS	SHEET NO.
326	104 RS-9	MCHENRY	22	1
FED. ROAD DIST. NO.	ILLINOIS	CONTRACT NO. 60H32		

D-91-602-09



STATE OF ILLINOIS
DEPARTMENT OF TRANSPORTATION
DIVISION OF HIGHWAYS

SUBMITTED APRIL 21 20 09
Diana M. O'Keefe
DEPUTY DIRECTOR OF HIGHWAYS, REGION ENGINEER

May 1, 20 09
Charles J. Ingersoll
ENGINEER OF DESIGN AND ENVIRONMENT

May 1, 20 09
Christine M. Reed
DIRECTOR OF HIGHWAYS, CHIEF ENGINEER

**PRINTED BY THE AUTHORITY
OF THE STATE OF ILLINOIS**

LOCO, INC.
CONSULTING ENGINEERS
1560 WALL ST, SUITE 222
NAPERVILLE, ILLINOIS 60563 PH: (630) 577-9100

WILLIAM H. HEBB
062-04782
REGISTERED PROFESSIONAL ENGINEER
W.H.H.
Exp. 11.30.09

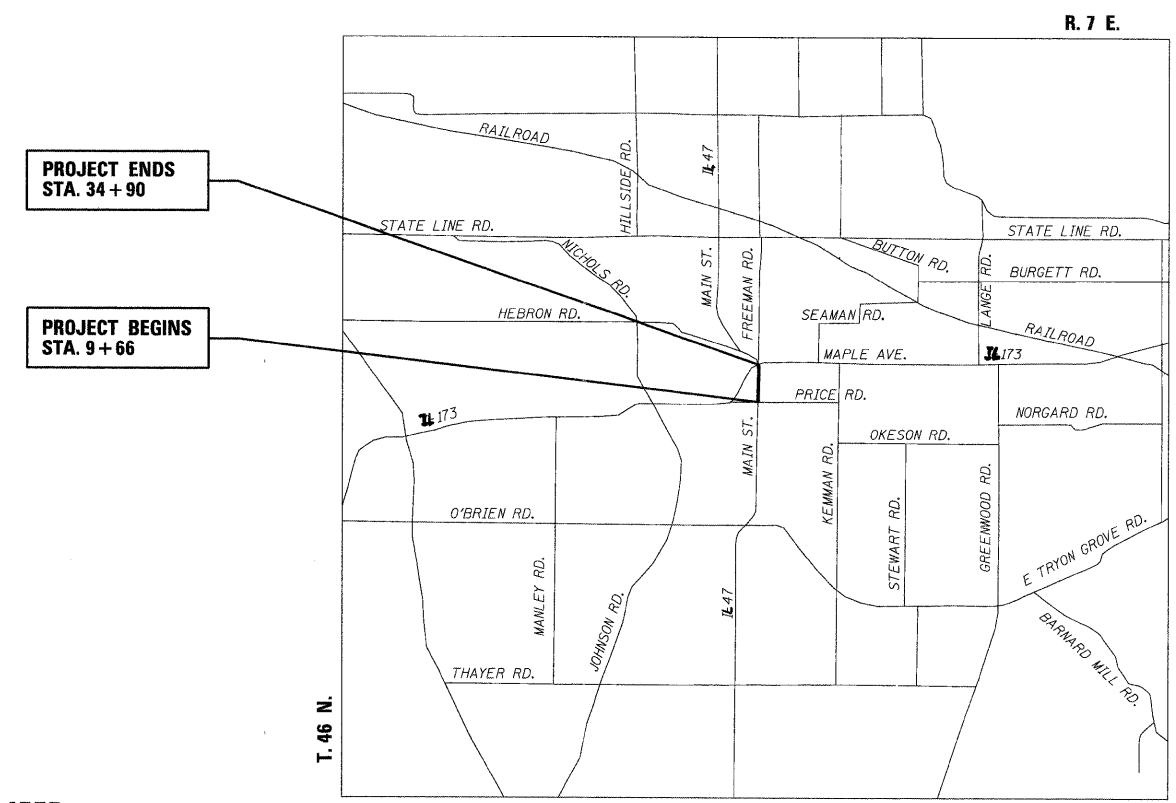
STATE OF ILLINOIS
DEPARTMENT OF TRANSPORTATION
DIVISION OF HIGHWAYS

**PROPOSED
HIGHWAY PLANS**

FAP ROUTE 326 (ILL ROUTE 47 MAIN STREET)
ILL ROUTE 173 TO PRICE ROAD

SECTION: 104 RS-9
RESURFACING (3P)

MCHENRY COUNTY
C-91-602-09



PROJECT ENDS
STA. 34 + 90

PROJECT BEGINS
STA. 9 + 66

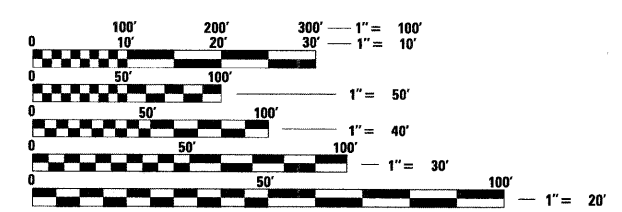
LOCATION SKETCH

NET AND GROSS LENGTH OF PROJECT = 2,524' = 0.478 MI

PROJECT LOCATED IN
THE VILLAGE OF HEBRON

FOR INDEX OF SHEETS, SEE SHEET NO. 2

ADT 4900 (2007)
SPEED LIMIT 30 MPH



FULL SIZE PLANS HAVE BEEN PREPARED USING STANDARD ENGINEERING SCALES. REDUCED SIZED PLANS WILL NOT CONFORM TO STANDARD SCALES. IN MAKING MEASUREMENTS ON REDUCED PLANS, THE ABOVE SCALES MAY BE USED.

J.U.L.I.E.
JOINT UTILITY LOCATION INFORMATION FOR EXCAVATION
1-800-892-0123
OR 811

PROJECT MANAGER: RAJENDRA C. SHAH (847) 705-4555
PROJECT ENGINEER: ERSKINE W. KLYCE (847) 705-4594

CONTRACT NO. 60H32