

F.A.P. RTE.	SECTION	COUNTY	TOTAL SHEETS	SHEET NO.
326	105 RS-9	MCHENRY	37	1
FED. ROAD DIST. NO.	ILLINOIS	CONTRACT NO. 60H33		

D-91-603-09



STATE OF ILLINOIS  
DEPARTMENT OF TRANSPORTATION  
DIVISION OF HIGHWAYS

SUBMITTED APRIL 21, 20 09  
Diane M. O'Keefe *as*  
DEPUTY DIRECTOR OF HIGHWAYS, REGION ENGINEER

May 1, 20 09  
Charles J. Ingersoll *JD*  
ENGINEER OF DESIGN AND ENVIRONMENT

May 1, 20 09  
Christine M. Reed *JD*  
DIRECTOR OF HIGHWAYS, CHIEF ENGINEER

**PRINTED BY THE AUTHORITY  
OF THE STATE OF ILLINOIS**

LOWCO, INC.  
CONSULTING ENGINEERS  
1560 WALL ST., SUITE 222  
NAPERVILLE, ILLINOIS 60563 PH: (630) 577-9100

WILLIAM H. HERR  
062-047827  
REGISTERED  
PROFESSIONAL  
ENGINEER  
*William H. Herr*  
Expires 11/30/09

STATE OF ILLINOIS  
DEPARTMENT OF TRANSPORTATION  
DIVISION OF HIGHWAYS

**PROPOSED  
HIGHWAY PLANS**

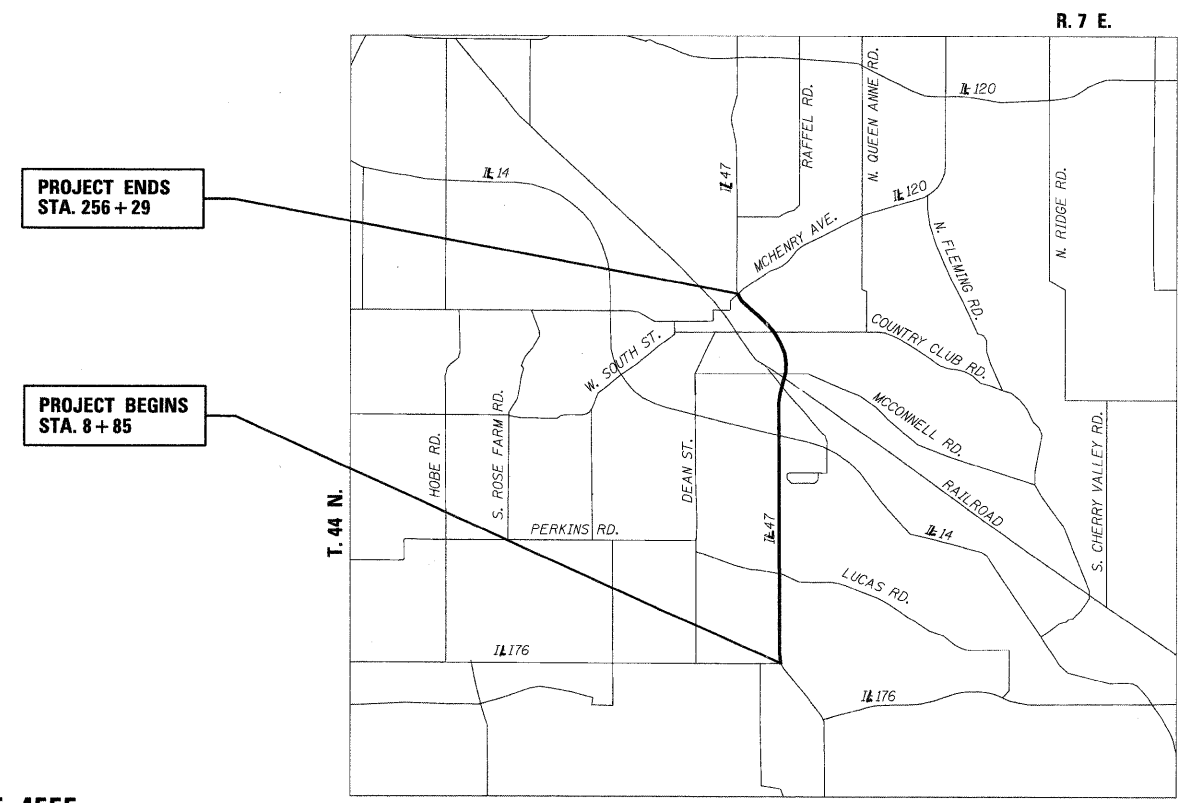
FAP ROUTE 326 (ILL ROUTE 47)  
ILL ROUTE 120 (MCHENRY AVENUE) TO ILL ROUTE 176

SECTION: 105 RS-9  
RESURFACING (3P)  
MCHENRY COUNTY  
C-91-603-09

PROJECT LOCATED IN AND ADJACENT  
TO THE VILLAGE OF WOODSTOCK

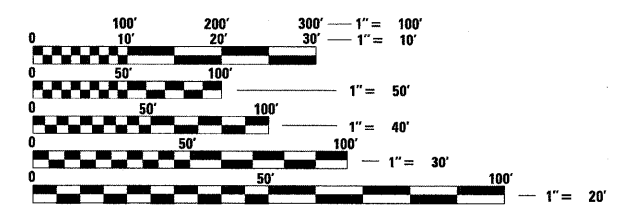
FOR INDEX OF SHEETS, SEE SHEET NO. 2

ADT 16,300 (2007)  
SPEED LIMIT 55 MPH



LOCATION SKETCH

NET AND GROSS LENGTH OF PROJECT = 24,744' = 4.686 MI



FULL SIZE PLANS HAVE BEEN PREPARED USING STANDARD  
ENGINEERING SCALES. REDUCED SIZED PLANS WILL NOT  
CONFORM TO STANDARD SCALES. IN MAKING MEASUREMENTS  
ON REDUCED PLANS, THE ABOVE SCALES MAY BE USED.

J.U.L.I.E.  
JOINT UTILITY LOCATION INFORMATION FOR EXCAVATION  
1-800-892-0123  
OR 811

PROJECT MANAGER: RAJENDRA C. SHAH (847) 705-4555  
PROJECT ENGINEER: ERSKINE W. KLYCE (847) 705-4594

CONTRACT NO. 60H33