

F.A. RTE.	SECTION	COUNTY	TOTAL SHEETS	SHEET NO.
	90 RS-3	GRUNDY	29	1
FED. ROAD DIST. NO.	ILLINOIS	CONTRACT NO. 60H38		

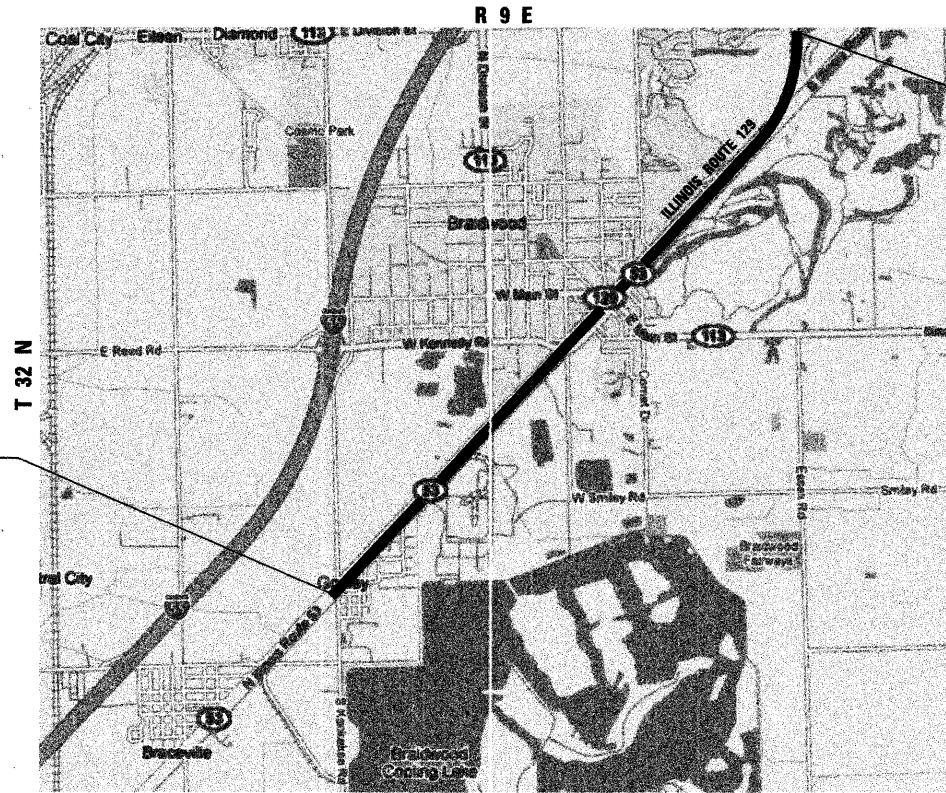
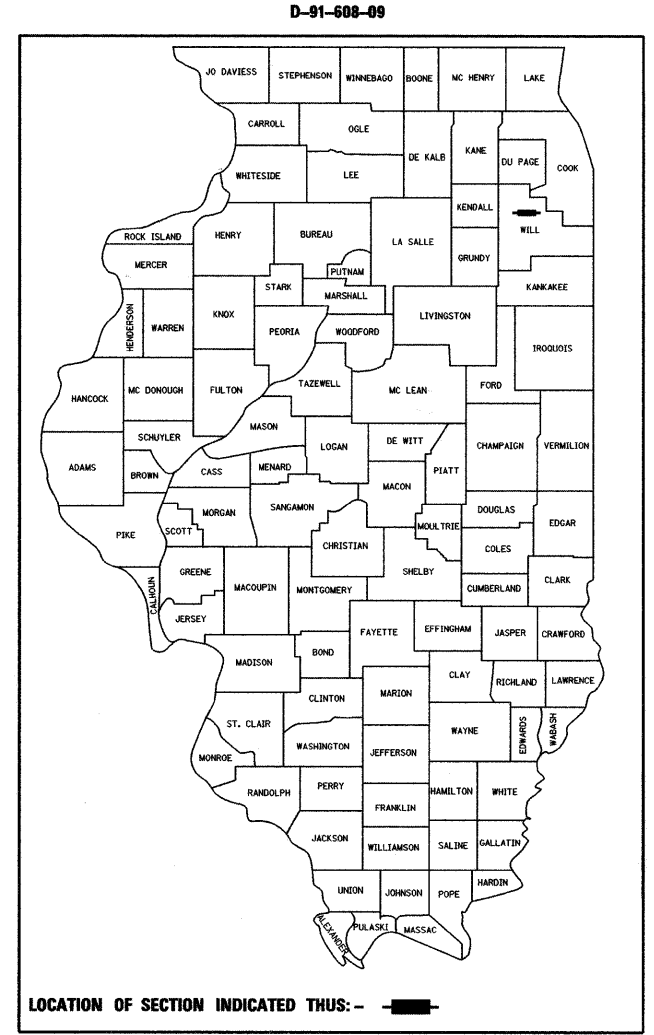
STATE OF ILLINOIS  
DEPARTMENT OF TRANSPORTATION  
DIVISION OF HIGHWAYS

**PROPOSED  
HIGHWAY PLANS**

OR 129 / FAU 0381: ILL ROUTE 129  
COAL CITY RD. TO GRUNDY CO. LINE  
SECTION: 90 RS-3  
RESURFACING IMPROVEMENT  
WILL COUNTY  
C-91-608-09

FOR INDEX OF SHEETS, SEE SHEET NO. 2

THE IMPROVEMENT IS LOCATED IN THE  
VILLAGES OF BRAIDWOOD AND GODLEY



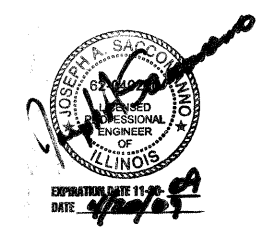
PROJECT BEGINS  
STA. 857 + 75.00

PROJECT ENDS  
STA. 609 + 20.00



TRAFFIC DATA:  
2006 ADT = 4250  
POSTED SPEED LIMIT:  
45 MPH FROM S. KANKAHEE RD TO E. MAIN ST.  
55 MPH FROM E. MAIN ST TO COAL CITY RD.

JOSEPH A. SACCOMANNO  
ALFRED BENESCH & CO.



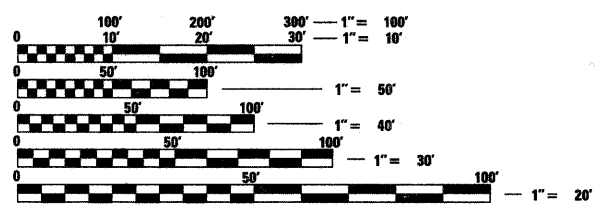
STATE OF ILLINOIS  
DEPARTMENT OF TRANSPORTATION  
DIVISION OF HIGHWAYS

SUBMITTED APRIL 21 2009

Diana M. O'Keefe  
DEPUTY DIRECTOR OF HIGHWAYS, REGION ENGINEER

May 1, 2009  
Charles J. Dranswell  
ENGINEER OF DESIGN AND ENVIRONMENT

May 1, 2009  
Christine M. Reed  
DIRECTOR OF HIGHWAYS, CHIEF ENGINEER



FULL SIZE PLANS HAVE BEEN PREPARED USING STANDARD  
ENGINEERING SCALES. REDUCED SIZED PLANS WILL NOT  
CONFORM TO STANDARD SCALES. IN MAKING MEASUREMENTS  
ON REDUCED PLANS, THE ABOVE SCALES MAY BE USED.

J.U.L.I.E.  
JOINT UTILITY LOCATION INFORMATION FOR EXCAVATION  
1-800-892-0123  
OR 811

**benesch**  
alfred benesch & company  
Engineers • Surveyors • Planners  
205 North Michigan Avenue, Suite 2400  
Chicago, Illinois 60601  
312-585-0450

CONTRACT NO. 60H38

GROSS LENGTH OF IMPROVEMENT = 24,855 LINEAL FEET = 4.71 MILES  
NET LENGTH OF IMPROVEMENT = 23,455 LINEAL FEET = 4.44 MILES

**PRINTED BY THE AUTHORITY  
OF THE STATE OF ILLINOIS**

CONSULTANT PROJECT ENGINEER: ISSAM RAYYAN (847) 705-4556