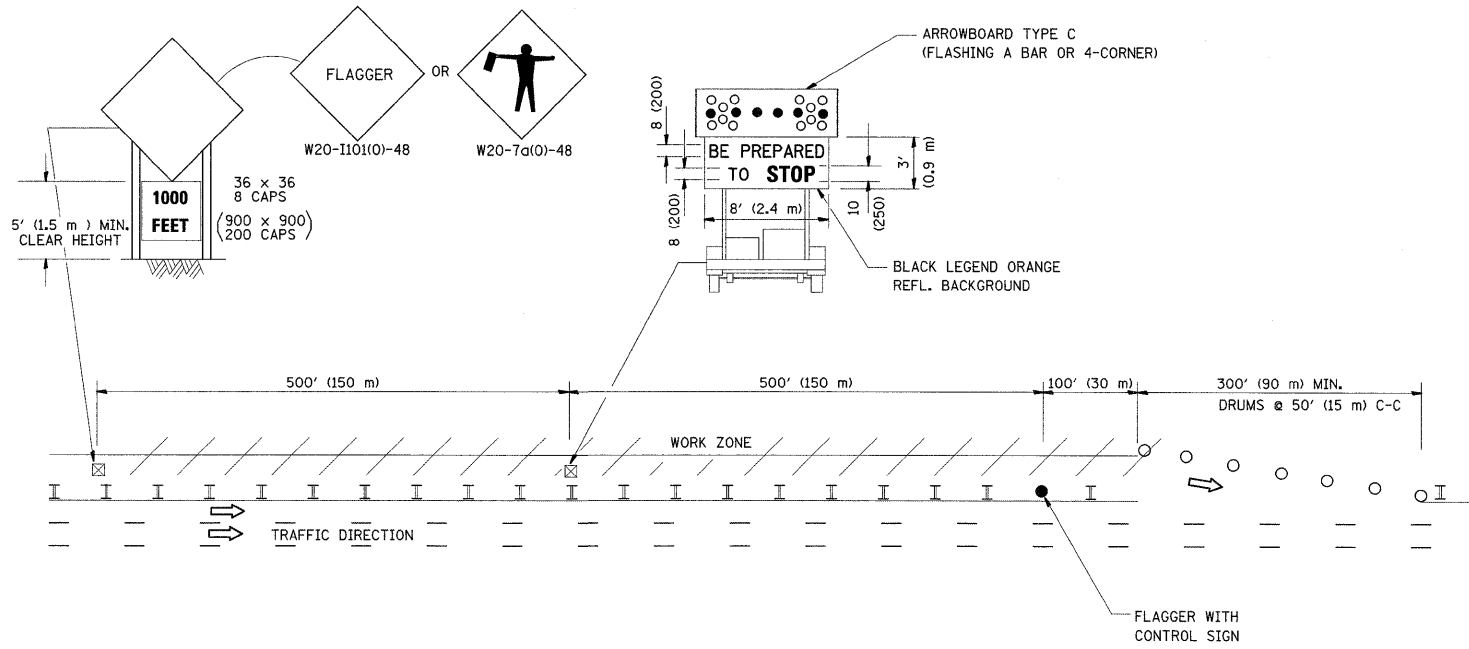
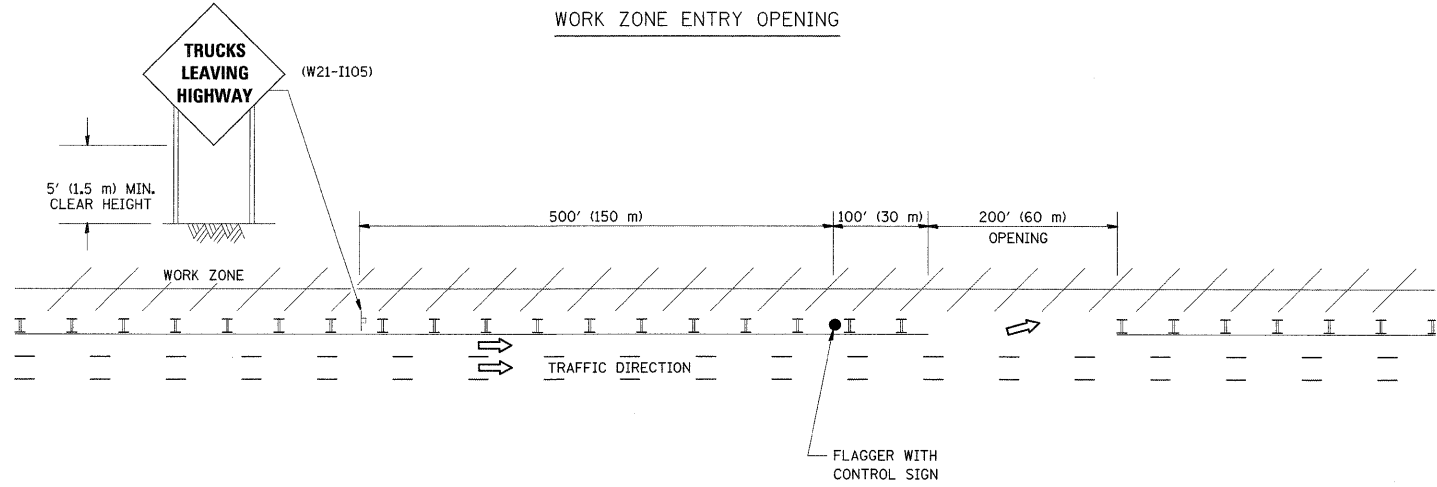


SIGNING FOR FLAGGING OPERATIONS AT WORK ZONE OPENINGS

WORK ZONE EXIT OPENING



WORK ZONE ENTRY OPENING



- NOTES:
1. The Arrowboard, the Flagger Ahead trailer mounted sign, and the Trucks Leaving Highway sign shall be removed or turned away from traffic and the exit and entry openings shall be closed when the flagging operation ceases.
  2. Work Zone Exit Openings should be a minimum of one half mile apart.
  3. Exiting the work zone at any place other than at a Work Zone Exit Opening will be prohibited.
  4. All vehicles shall enter the work zone at entry openings, using their turn signals to warn motorists.

ALL DIMENSIONS ARE IN INCHES (MILLIMETERS) UNLESS OTHERWISE SHOWN

FILE NAME =	USER NAME = abreuah	DESIGNED -	REVISED - D.W.S. 08-98
c:\pw_work\FWIDOT\ABREUAH\dms88408\DrawStd.dgn		DRAWN -	REVISED - J.A.F. 04-03
		CHECKED -	REVISED - J.A.F. 02-06
		DATE -	REVISED - S.P.B. 01-07

STATE OF ILLINOIS  
DEPARTMENT OF TRANSPORTATION

SIGNING FOR FLAGGING OPERATIONS  
AT WORK ZONE OPENINGS

SCALE: NONE SHEET NO. 1 OF 1 SHEETS STA. TO STA.

F.A.P. RTE. 876	SECTION (9Y&10)RS-5	COUNTY WILL	TOTAL SHEETS 23	SHEET NO. 22
TC-18		CONTRACT NO. 62657		
FED. ROAD DIST. NO. 1 ILLINOIS FED. AID PROJECT				