

DIST. 1 DESIGN - PLAN PREPARATION ENGINEER: KEN ENG / DANIEL WILGREN (847) 705-4240

F.A.P. RTE.	SECTION	COUNTY	TOTAL SHEETS	SHEET NO.
345	2003-091 RS	COOK	19	1
		ILLINOIS	CONTRACT NO. 62666	

STATE OF ILLINOIS
DEPARTMENT OF TRANSPORTATION
DIVISION OF HIGHWAYS

**PROPOSED
HIGHWAY PLANS**

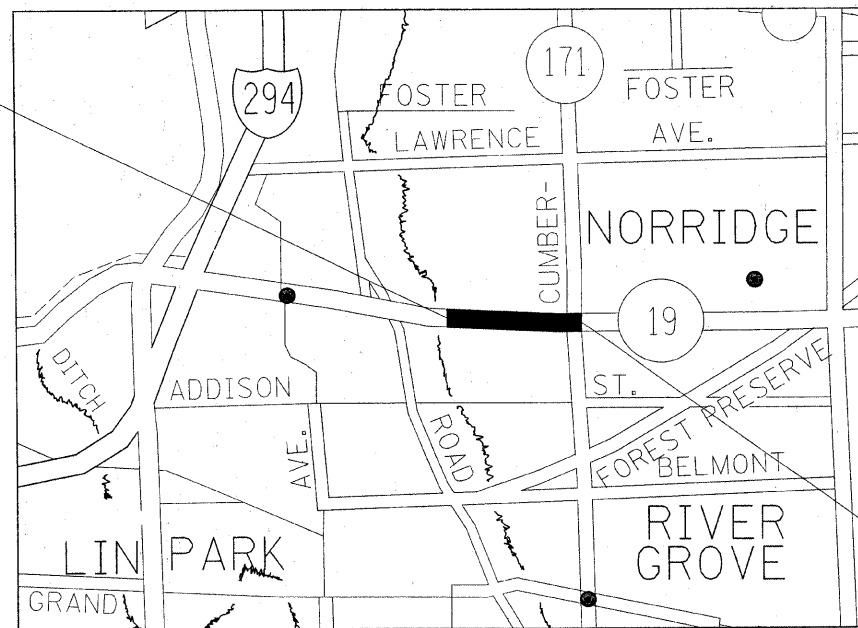
FAP ROUTE 345 / IL 19 (IRVING PARK RD.)
SECTION 2003-091 RS
DES PLAINES RIVER RD. TO IL 171 (CUMBERLAND AVE.)
RESURFACING (3P)

FOR INDEX OF SHEETS, SEE SHEET NO. 2

PROJECT IS LOCATED IN THE
VILLAGE OF SCHILLER PARK AND
THE CITY OF CHICAGO

COOK COUNTY
C-91-029-04
R12 E

PROJECT BEGINS
STA. 18 + 00

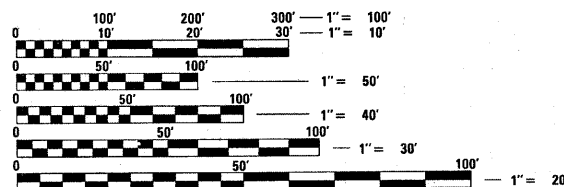


LYDEN, NORWOOD PARK, & JEFFERSON TOWNSHIPS

TRAFFIC DATA

2007 ADT = 28,100
SPEED LIMIT 35 TO 45

PROJECT ENDS
STA. 63 + 68



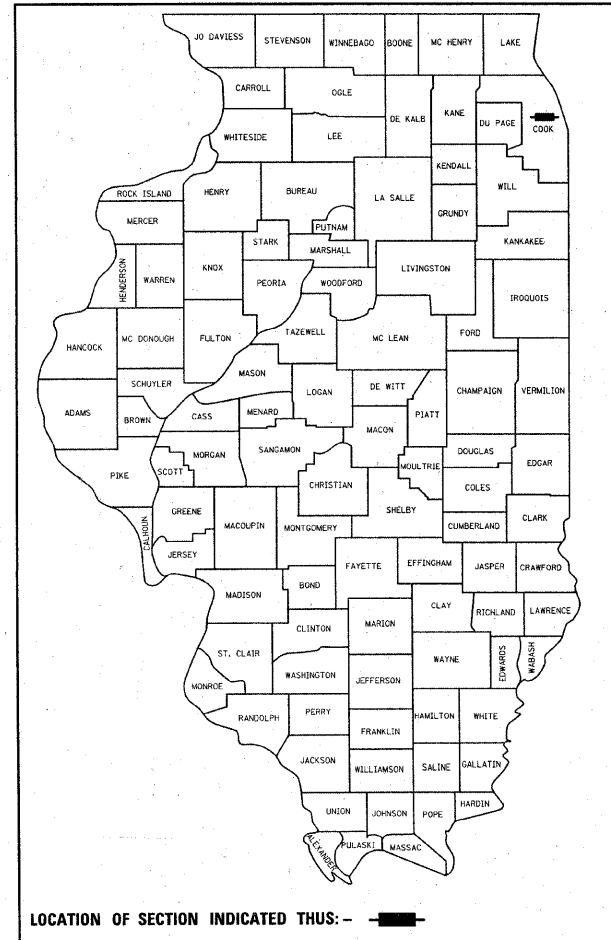
FULL SIZE PLANS HAVE BEEN PREPARED USING STANDARD
ENGINEERING SCALES. REDUCED SIZED PLANS WILL NOT
CONFORM TO STANDARD SCALES. IN MAKING MEASUREMENTS
ON REDUCED PLANS, THE ABOVE SCALES MAY BE USED.

J.U.L.I.E.
JOINT UTILITY LOCATION INFORMATION FOR EXCAVATION
1-800-892-0123

CONTRACT NO. 62666

GROSS LENGTH OF IMPROVEMENT - 4,568 FEET - 0.865 MILES
NET LENGTH OF IMPROVEMENT - 4,568 FEET - 0.865 MILES

D-91-029-04



LOCATION OF SECTION INDICATED THUS: -

STATE OF ILLINOIS
DEPARTMENT OF TRANSPORTATION
DIVISION OF HIGHWAYS

SUBMITTED MARCH 30, 2009
Diana M. O'Keefe
DEPUTY DIRECTOR OF HIGHWAYS, REGION ENGINEER

May 1, 2009
Charles G. Ingwersoll
ENGINEER OF DESIGN AND ENVIRONMENT

May 1, 2009
Christine M. Reed
DIRECTOR OF HIGHWAYS, CHIEF ENGINEER

PRINTED BY THE AUTHORITY
OF THE STATE OF ILLINOIS