

F.A.U. RTE.	SECTION	COUNTY	TOTAL SHEETS	SHEET NO.
3520	2005-010RS	COOK	23	1
		ILLINOIS	CONTRACT NO. 62927	

STATE OF ILLINOIS  
DEPARTMENT OF TRANSPORTATION  
DIVISION OF HIGHWAYS

**PROPOSED  
HIGHWAY PLANS**

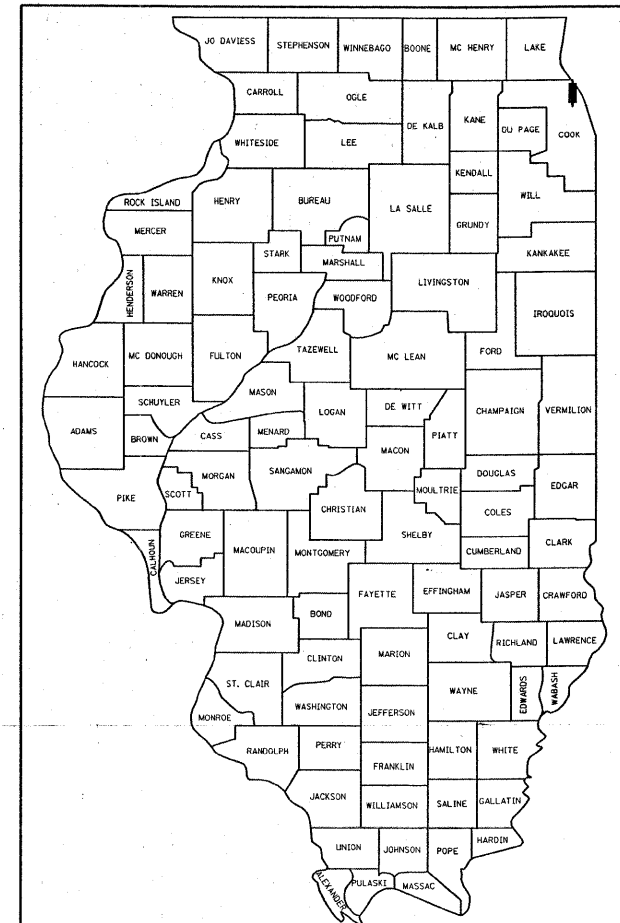
F.A.U. ROUTE 3520 (RIDGE RD.)  
WILMETTE AVE. TO WINNETKA RD.  
SECTION: 2005-010RS  
RESURFACING (3P)

COOK COUNTY  
C-91-160-05

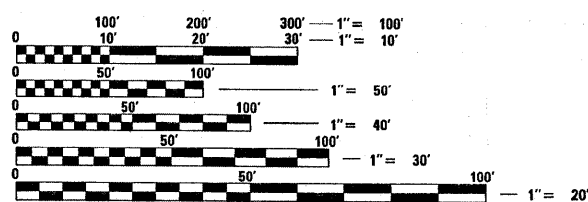
FOR INDEX OF SHEETS, SEE SHEET NO. 2

PROJECT LOCATED IN THE VILLAGES OF  
WILMETTE, KENILWORTH AND WINNETKA

D-91-160-05



LOCATION OF SECTION INDICATED THUS: - ■ -



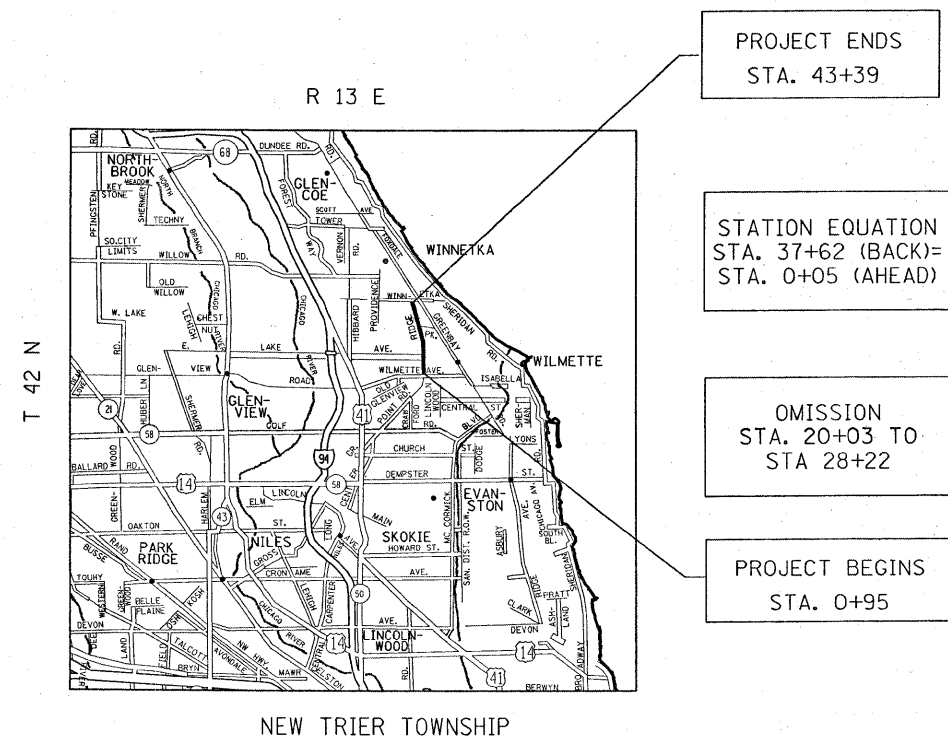
FULL SIZE PLANS HAVE BEEN PREPARED USING STANDARD ENGINEERING SCALES. REDUCED SIZED PLANS WILL NOT CONFORM TO STANDARD SCALES. IN MAKING MEASUREMENTS ON REDUCED PLANS, THE ABOVE SCALES MAY BE USED.

J.U.L.I.E.  
JOINT UTILITY LOCATION INFORMATION FOR EXCAVATION  
1-800-892-0123  
OR 811

PROJECT ENGINEER: JENPAI CHANG (847) 705-4432  
PROJECT MANAGER: KEN ENG

CONTRACT NO. 62927

TRAFFIC DATA:  
2006 ADT - 14,400  
SPEED LIMIT - 30 MPH



GROSS LENGTH = 8,001 FT. = 1.52 MILES  
NET LENGTH = 7,182 FT. = 1.36 MILES

STATE OF ILLINOIS  
DEPARTMENT OF TRANSPORTATION  
DIVISION OF HIGHWAYS

SUBMITTED MARCH 23, 2009

Diana M. O'Keefe DEPUTY DIRECTOR OF HIGHWAYS, REGION ENGINEER  
May 1, 2009

Charles G. Bruggs ENGINEER OF DESIGN AND ENVIRONMENT  
May 1, 2009

Christine M. Reed DIRECTOR OF HIGHWAYS, CHIEF ENGINEER

**PRINTED BY THE AUTHORITY  
OF THE STATE OF ILLINOIS**