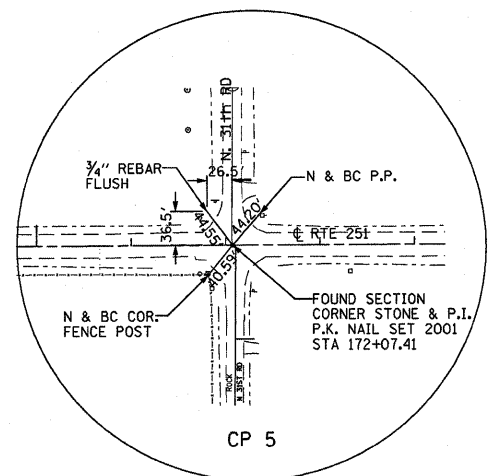
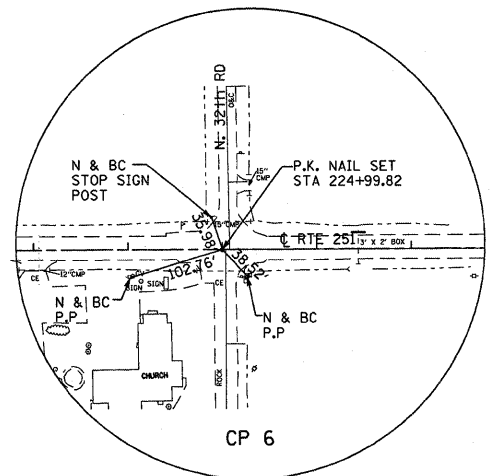


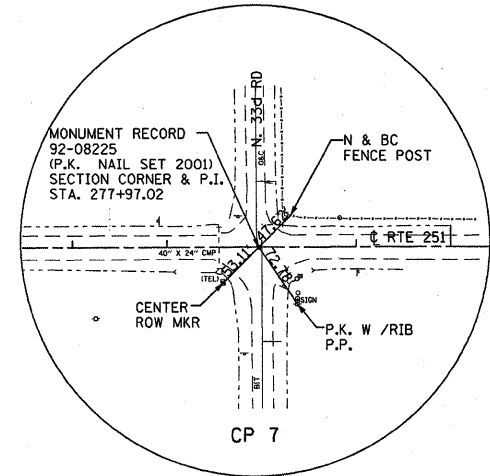
CP 101



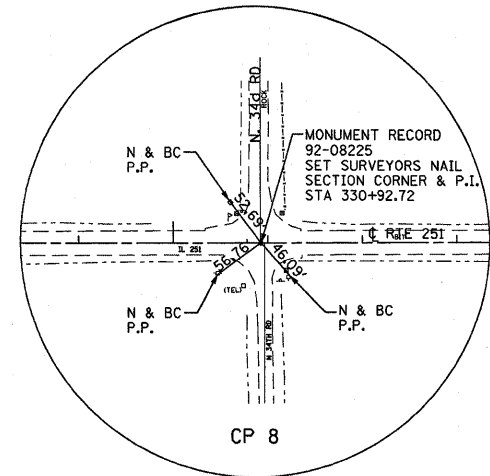
CP 5



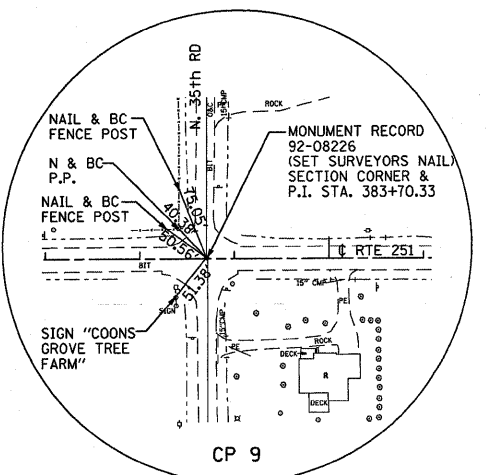
CP 6



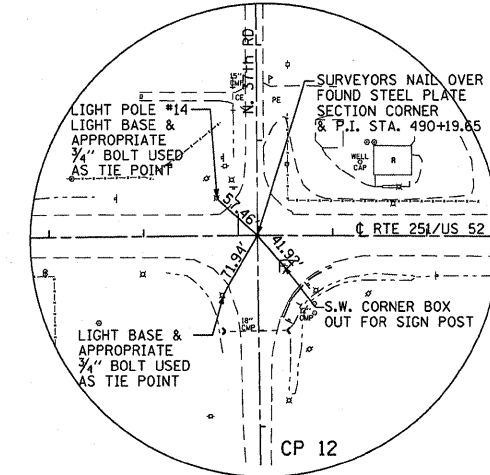
CP 7



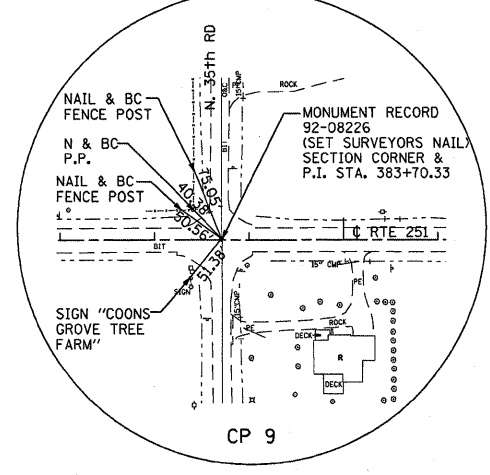
CP 8



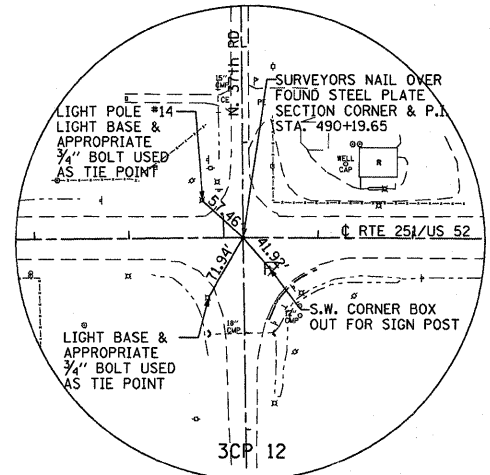
CP 9



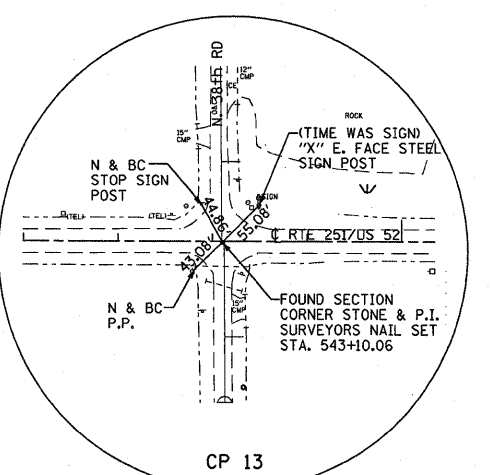
CP 12



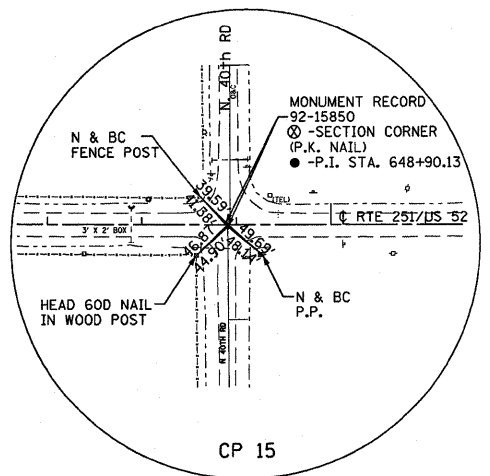
CP 9



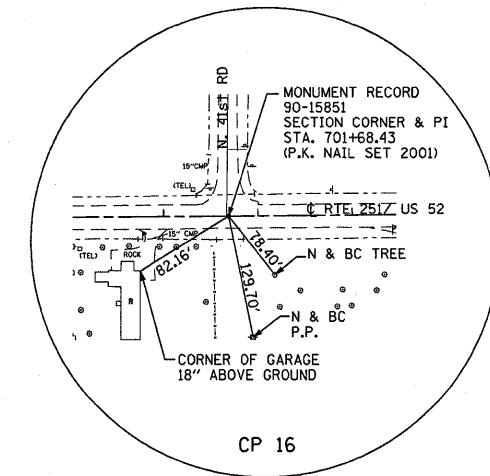
3CP 12



CP 13



CP 15



CP 16

ALL TIES SHALL BE REPLACED WITH PERMANENT SURVEY MARKERS

FILE NAME =	USER NAME = lindemanns	DESIGNED -	REVISED -
c:\pwork\pwsdot\lindemanns\d0122862\LNMI.dgn	LNMI.dgn	DRAWN -	REVISED -
	PLOT SCALE = 50.0000' / IN.	CHECKED -	REVISED -
	PLOT DATE = Mar 25, 2009 - 09:35:01 AM	DATE -	REVISED -

DESIGNED -	REVISED -
DRAWN -	REVISED -
CHECKED -	REVISED -
DATE -	REVISED -

STATE OF ILLINOIS  
DEPARTMENT OF TRANSPORTATION

TIE POINTS

SCALE: SHEET NO. OF SHEETS STA. TO STA.

F.A.S. RTE.	SECTION	COUNTY	TOTAL SHEETS	SHEET NO.
250	(71,72)RS-6	LASALLE	12	6
CONTRACT NO. 66969				
ILLINOIS FED. AID PROJECT				