

★100+3=103

F.A. RTE.	SECTION	COUNTY	TOTAL SHEETS	SHEET NO.
VAR		PEORIA	100X	1
FED. ROAD DIST. NO. 4		ILLINOIS	CONTRACT NO. 68890	
<small>(108X,130,102)RS-3;129RS-4;101RS-2</small>				

STATE OF ILLINOIS
DEPARTMENT OF TRANSPORTATION
DIVISION OF HIGHWAYS

**PROPOSED
HIGHWAY PLANS**

VARIOUS ROUTES
SECTION (108X,130,102)RS-3;129RS-4;etc

PAVEMENT RESURFACING & RECONSTRUCTION
PEORIA COUNTY

C-94-081-09

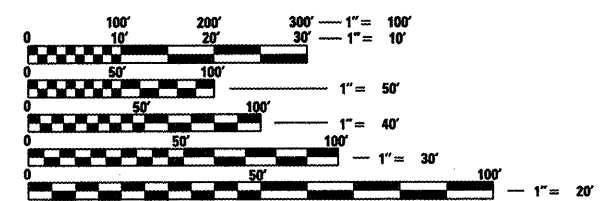
FOR INDEX OF SHEETS, SEE SHEET NO. 2

HIGHWAY STANDARDS

- | | | |
|-----------|-----------|-----------|
| 280001-04 | 630301-05 | 780001-02 |
| 406201-01 | 631031-07 | 781001-03 |
| 420001-07 | 635011-02 | BLR21-8 |
| 420111-02 | 667101-01 | |
| 420601-05 | 701006-03 | |
| 420701-02 | 701011-02 | |
| 442201-03 | 701301-03 | |
| 483001-04 | 701306-02 | |
| 601001-03 | 701311-03 | |
| 602306-02 | 701321-10 | |
| 602401-02 | 701326-03 | |
| 602601-02 | 701336-05 | |
| 604046-02 | 701901-01 | |
| 606001-04 | 704001-05 | |

CADD STANDARDS

- | | |
|-----------|-----------|
| 406101-D4 | 602006-D4 |
| 406301-D4 | 630101-D4 |
| 406401-D4 | 780001-D4 |
| 440001-D4 | |



FULL SIZE PLANS HAVE BEEN PREPARED USING STANDARD ENGINEERING SCALES. REDUCED SIZED PLANS WILL NOT CONFORM TO STANDARD SCALES. IN MAKING MEASUREMENTS ON REDUCED PLANS, THE ABOVE SCALES MAY BE USED.

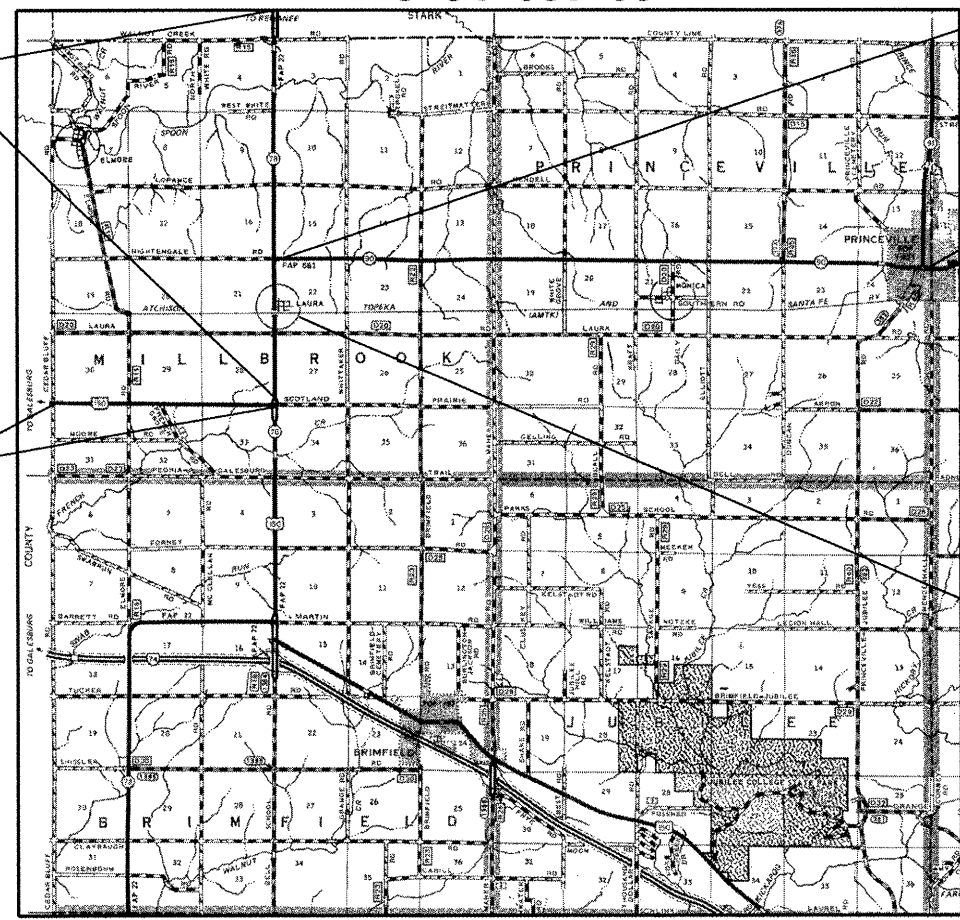
J.U.L.I.E.
JOINT UTILITY LOCATION INFORMATION FOR EXCAVATION
1-800-892-0123
OR 811

PROJECT C
BEGINS STARK-PEORIA
CO. LINE STA. 459+18
ENDS STA. 716+90

BRIDGE OMISSIONS:
IL 78 (SN.072-0031)
STA.493+87 TO STA.497+97

IL 90 (SN.072-0034)
STA.114+97 TO 115+63

PROJECT A
BEGINS STA. 754+80.00
ENDS STA. 10+23.00

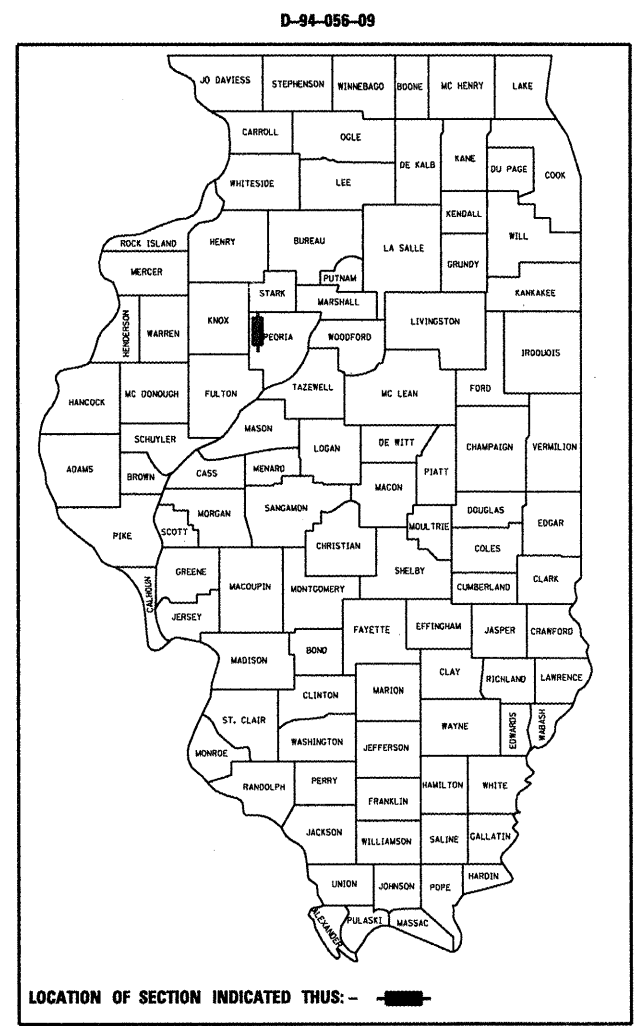


PROJECT D BEGINS
STA. 0+12.00

PROJECT D ENDS
STA. 590+93.00

PROJECT B
BEGINS STA. 653+86
ENDS STA. 664+00

PROJECT DESCRIPTION:
RESURFACE US 150 FROM KNOX COUNTY LINE TO IL (78), SOUTH OF LAURA;
IL 78 FROM STARK COUNTY LINE TO US 150(W), AND IL 90 FROM IL 78 TO IL 90(N)
IN PRINCEVILLE, INCLUDING RECONSTRUCTION OF IL 78 FROM MAPLE STREET TO
400 FEET SOUTH OF BNSF RR IN LAURA



LOCATION OF SECTION INDICATED THUS: - [shaded area]

STATE OF ILLINOIS
DEPARTMENT OF TRANSPORTATION
DIVISION OF HIGHWAYS

SUBMITTED *April 10 20 09*

[Signature]
DEPUTY DIRECTOR OF HIGHWAYS, REGION ENGINEER

May 1 20 09
Charles J. Ingersoll
ENGINEER OF DESIGN AND ENVIRONMENT

May 1 20 09
Christine M. Reed
DIRECTOR OF HIGHWAYS, CHIEF ENGINEER

PRINTED BY THE AUTHORITY
OF THE STATE OF ILLINOIS

PROJECT ENGINEER: CHRISTOPHER MAUSHARD (309)671-3453
PROJECT MANAGER: MICHAEL BOYER (309)671-3457

CONTRACT NO. 68890
CATALOG NO. 034238-00D